



CWS Architects

Architecture  
Space Planning  
Value Design

424 Cumberland Avenue  
Portland, ME 04101  
Phone: (207)774-4441  
Fax: (207)774-4410

www.cwsarch.com



Owner

**CCYBRO, L.P.**

c/o Cumberland County YMCA  
71 Forest Ave Portland, ME 04101  
(207) 874-1770

Client

**YMCA APARTMENTS  
at 231  
HIGH STREET**  
High Street - Portland, Maine

Project No: 23051

Drawing Title  
**FOURTH FLOOR  
AND ROOF  
FRAMING PLAN**

Scale: 1/8"=1'-0"

Date: DECEMBER 19, 2004

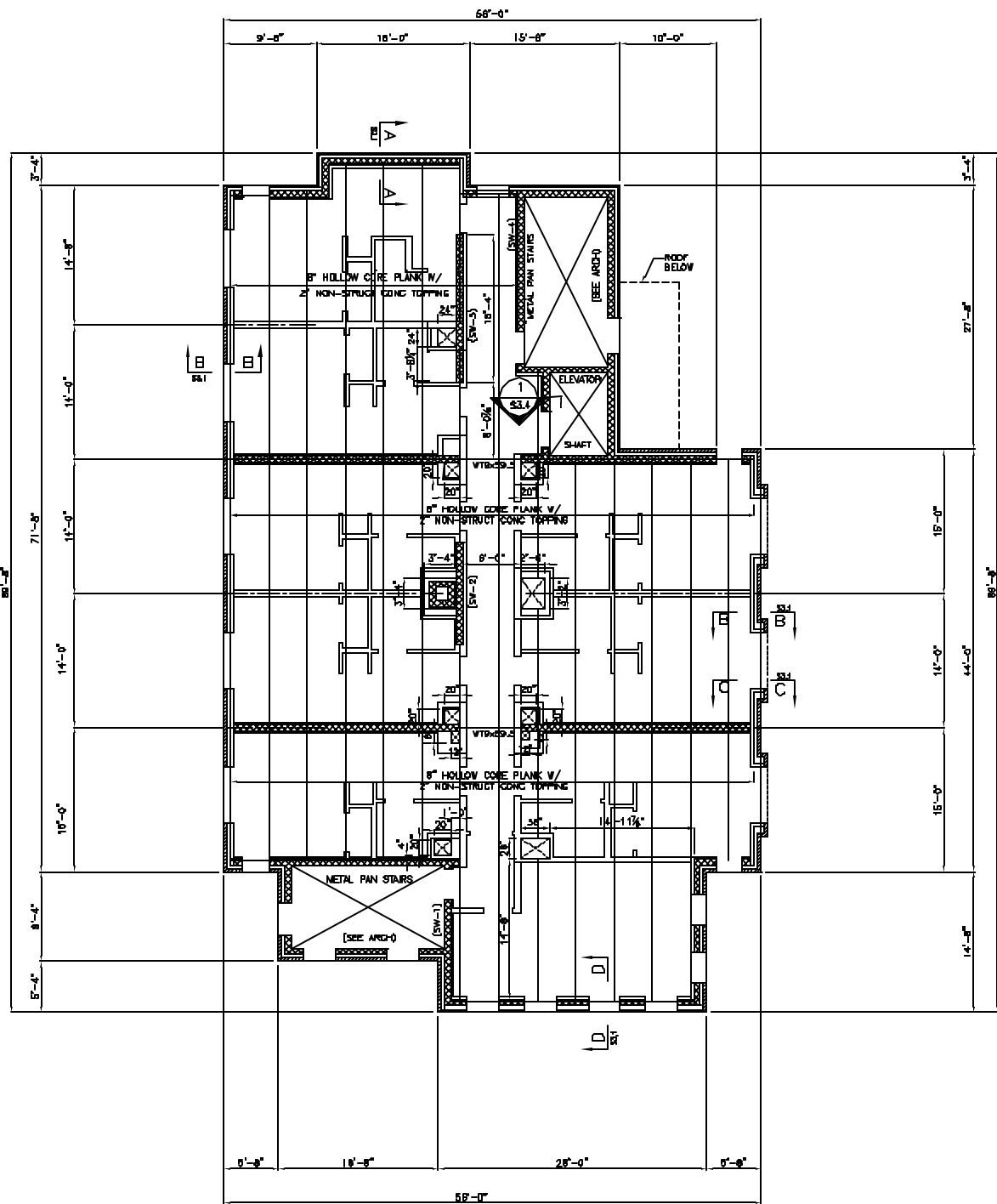
Revisions

- △ VALUE ENGINEERING REVISIONS (SCHEDULE FLOOR PENETRATION SIZE)
- △
- △
- △
- △
- △

Drawing Number:

**S1.3**

ISSUED FOR PERMITTING

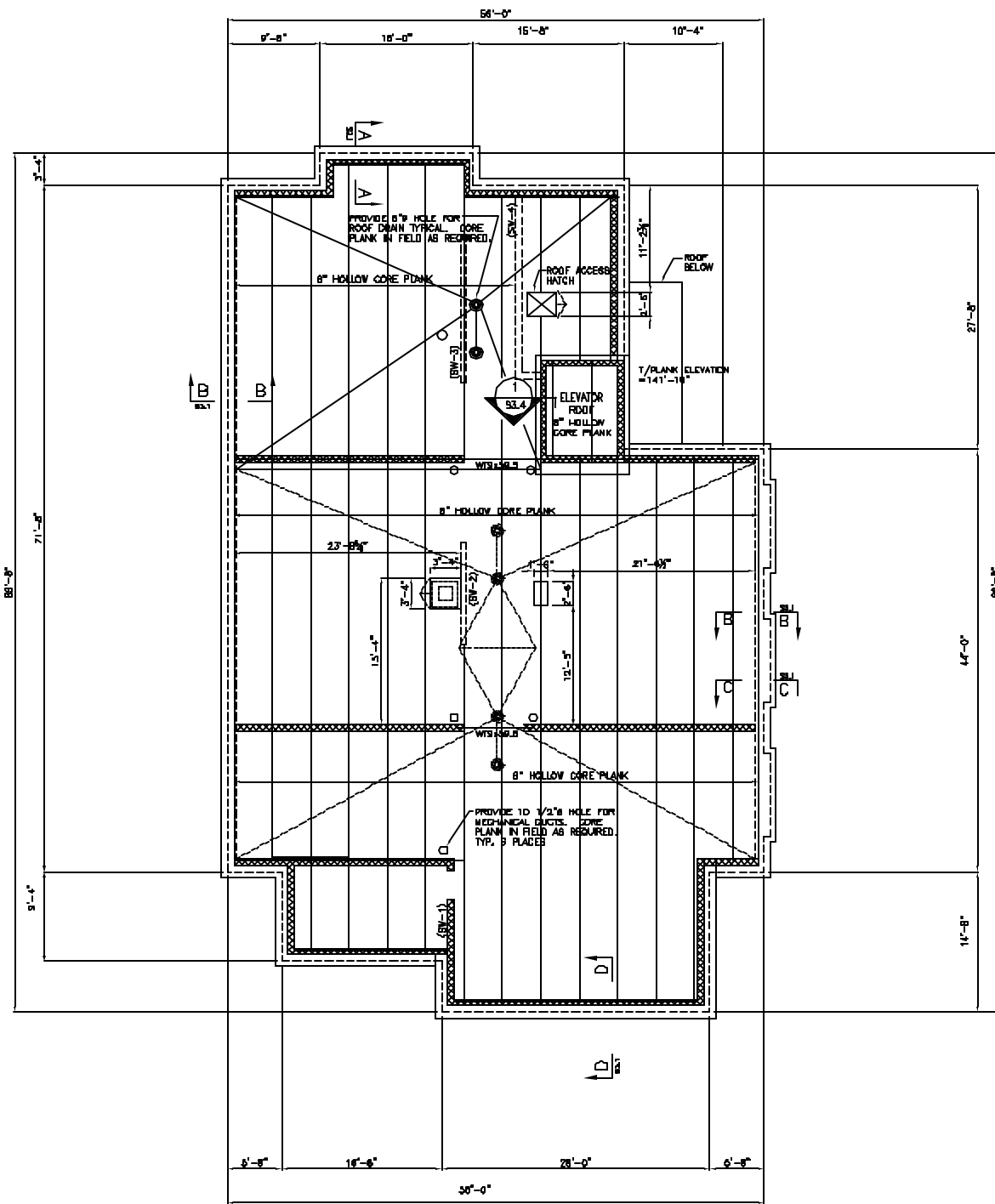


**FOURTH FLOOR FRAMING PLAN**

1/8" = 1'-0"

- NOTES:
1. FLOOR FRAMING CONSISTS OF 8" PRECAST HOLLOW CORE PLANK W/ 2" REINFORCED NON-STRUCT CONCRETE TOPPING
  2. FINISH FLOOR ELEVATION = REFER TO STRUCT. DWGS
  3. TOP OF PRECAST ELEVATION = REFER TO STRUCT. DWGS.
  4. (SW) - INDICATES REINFORCED CONCRETE SHEAR WALL SEE DRAWING S3.3 FOR REINFORCING
  5. REFER TO MECHANICAL DRAWINGS FOR PENETRATIONS
  6. SEE DRAWING S3.2 FOR TYPICAL W BEAM & WT BEARING DETAILS.
  7. PRECAST MANUF. SHALL DESIGN THE 8" HOLLOW CORE PLANK FOR THE LOADING PROVIDE IN THE GENERAL NOTES (REFER TO ARCHITECTURAL DRAWINGS FOR LOCATION OF SPECIFIC AREAS).
  8. FLOOR PENETRATIONS ARE TYPICAL FOR LEVELS 2, 3, AND 4

THESE DRAWINGS HAVE BEEN DEVELOPED BY L&L STRUCTURAL ENGINEERING SERVICES, INC. FOR THE TITLED SET ONLY. THE DRAWINGS ARE THE SOLE PROPERTY OF L&L STRUCTURAL ENGINEERING SERVICES, INC. AND THEY SHALL NOT BE USED, LOANED, COPIED OR ALTERED WITHOUT THE WRITTEN CONSENT OF L&L STRUCTURAL ENGINEERING SERVICES, INC.



**ROOF FRAMING PLAN**

1/8" = 1'-0"

- NOTES:
1. ROOF FRAMING CONSISTS OF 8" PRECAST HOLLOW CORE PLANK.
  2. FINISH FLOOR ELEVATION = N/A
  3. TOP OF PRECAST ELEVATION = 137'-2"
  4. (SW) - INDICATES REINFORCED CONCRETE SHEAR WALL SEE DRAWING S3.3 FOR REINFORCING
  5. REFER TO MECHANICAL DRAWINGS FOR PENETRATIONS
  6. SEE DRAWING S3.2 FOR TYPICAL W BEAM & WT BEARING DETAILS.
  7. PRECAST MANUF. SHALL DESIGN THE 8" HOLLOW CORE PLANK FOR THE LOADING PROVIDE IN THE GENERAL NOTES (REFER TO ARCHITECTURAL DRAWINGS FOR LOCATION OF SPECIFIC AREAS).
  8. COORDINATE ROOF PLANK PENETRATIONS W/ MECHANICAL DWGS.
  9. SHEAR WALLS NOT SHOWN FOR CLARITY.