



CWS Architects

Architecture
Space Planning
Value Design

432 Cumberland Avenue
Portland, ME 04101
Phone: (207)774-4441
Fax: (207)774-4814
www.CWSArch.com



Owner:

CCYSRO, LP.
c/o Cumberland County YMCA
10 Forest Ave Portland, ME 04101
(207) 624-1111

Client:

YMCA APARTMENTS
61 231
HIGH STREET
High Street - Portland, Maine

Project No: 23051

Drawing Title:
**SECOND AND THIRD
FLOOR FRAMING
PLAN**

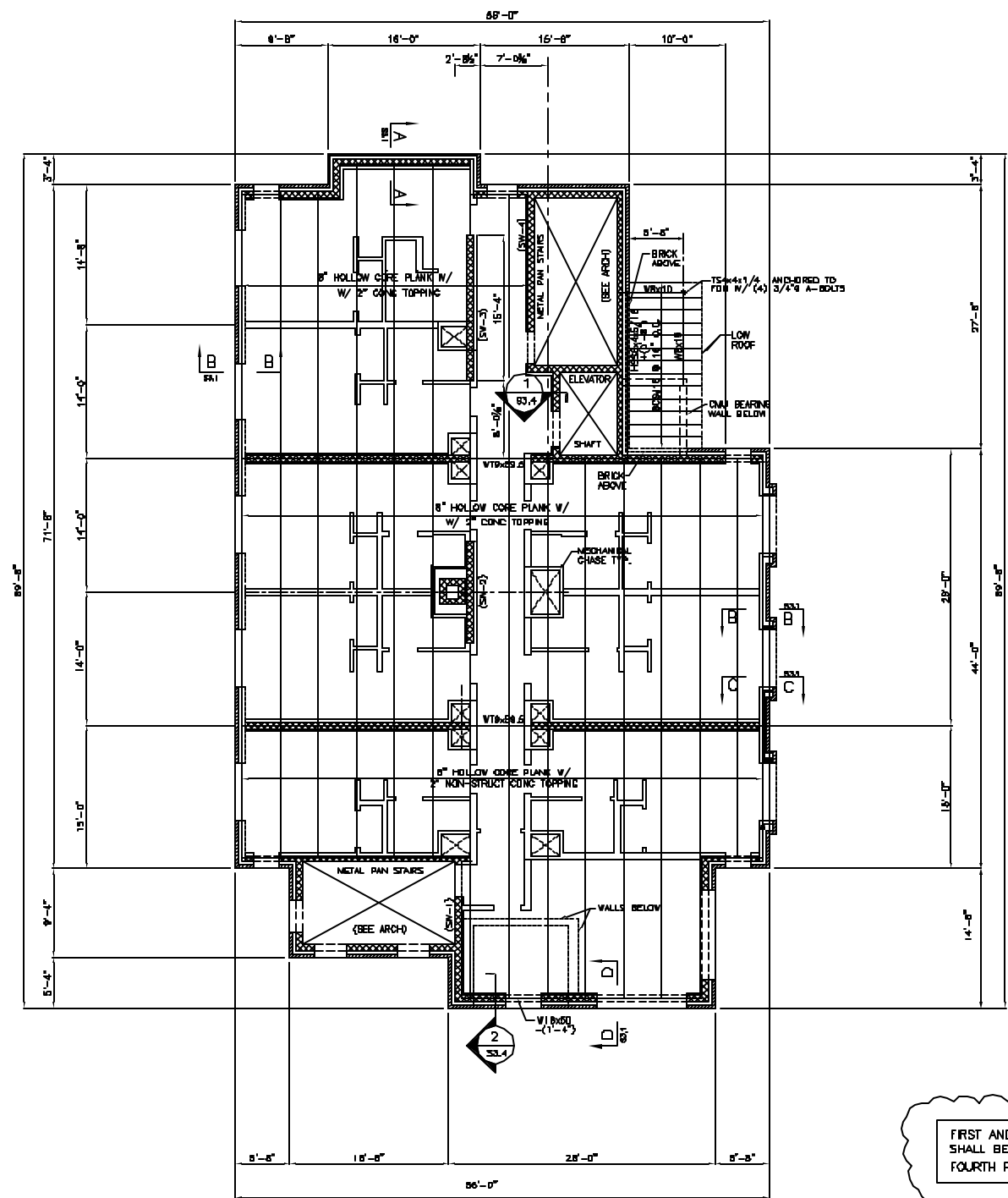
Scale: 1/8" = 1'-0"
Date: DECEMBER 10, 2004

Revisions:
▲ VALUE ENGINEERING REVISIONS
▲
▲
▲
▲
▲

Drawing Number:

S1.2

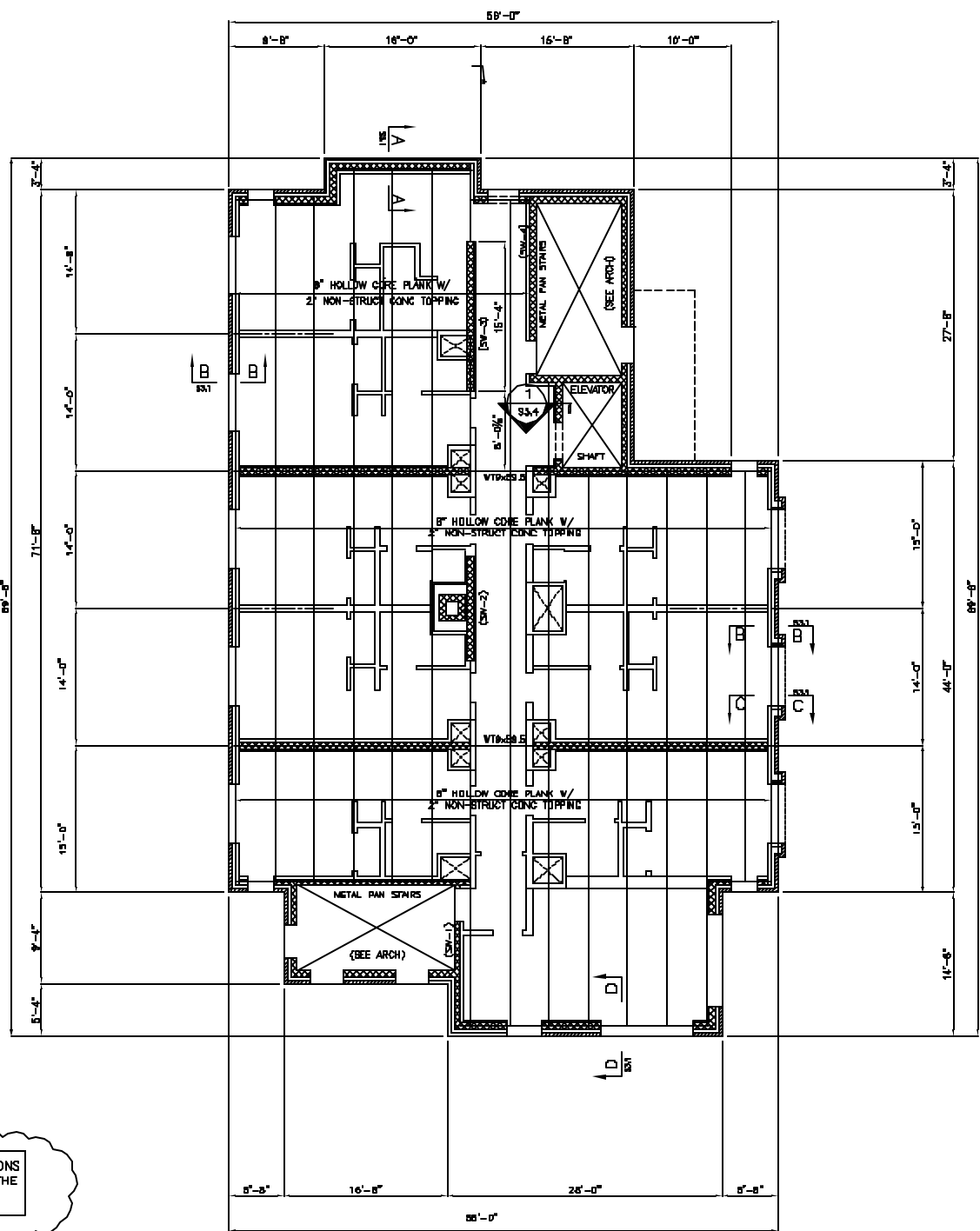
ISSUED FOR PERMITTING



SECOND FLOOR FRAMING PLAN

- 1/8" = 1'-0"
- NOTES:
- FLOOR FRAMING CONSISTS OF 8" PRECAST HOLLOW CORE PLANK W/ 2" REINFORCED NON-STRUCT CONCRETE TOPPING
FINISH FLOOR ELEVATION = 109'-4"
 - TOP OF PRECAST ELEVATION = 109'-2"
 - TOP OF STEEL ELEVATION = TOP OF W BEAM
 - TOP OF STEEL ELEVATION = 109'-10" TYP. UNO +/- (X'-XX")
 - (SW) - INDICATES REINFORCED CONCRETE SHEAR WALL
SEE DRAWING S3.3 FOR REINFORCING
 - REFER TO MECHANICAL DRAWINGS FOR PENETRATIONS
 - SEE DRAWING S3.2 FOR TYPICAL W BEAM & WT BEARING DETAILS.
 - PRECAST MANUF. SHALL DESIGN THE 8" HOLLOW CORE PLANK FOR THE LOADING PROVIDE IN THE GENERAL NOTES (REFER TO ARCHITECTURAL DRAWINGS FOR LOCATION OF SPECIFIC AREAS.
 - REFER TO DWG S3.4 FOR TYPICAL BEAM BEARING DETAILS.

FIRST AND SECOND FLOOR PENETRATIONS SHALL BE THE SAME AS SHOWN ON THE FOURTH FLOOR PLAN (DRAWING S1.3)



THIRD FLOOR FRAMING PLAN

- 1/8" = 1'-0"
- NOTES:
- FLOOR FRAMING CONSISTS OF 8" PRECAST HOLLOW CORE PLANK W/ 2" REINFORCED NON-STRUCT CONCRETE TOPPING
FINISH FLOOR ELEVATION = 118'-8"
 - TOP OF PRECAST ELEVATION = 118'-6"
 - (SW) - INDICATES REINFORCED CONCRETE SHEAR WALL
SEE DRAWING S3.3 FOR REINFORCING
 - REFER TO MECHANICAL DRAWINGS FOR PENETRATIONS
 - SEE DRAWING S3.2 FOR TYPICAL W BEAM & WT BEARING DETAILS.
 - PRECAST MANUF. SHALL DESIGN THE 8" HOLLOW CORE PLANK FOR THE LOADING PROVIDE IN THE GENERAL NOTES (REFER TO ARCHITECTURAL DRAWINGS FOR LOCATION OF SPECIFIC AREAS.
 - FOR FLOOR PENETRATION LOCATIONS SEE LEVEL 2 FRAMING PLAN.

THESE DRAWINGS HAVE BEEN DEVELOPED BY L.L. STRUCTURAL ENGINEERING SERVICES, INC. FOR THE TITLED SET ONLY. THE DRAWINGS ARE THE SOLE PROPERTY OF L.L. STRUCTURAL ENGINEERING SERVICES, INC. AND THEY SHALL NOT BE USED, LOANED, COPIED OR ALTERED WITHOUT THE WRITTEN CONSENT OF L.L. STRUCTURAL ENGINEERING SERVICES, INC.