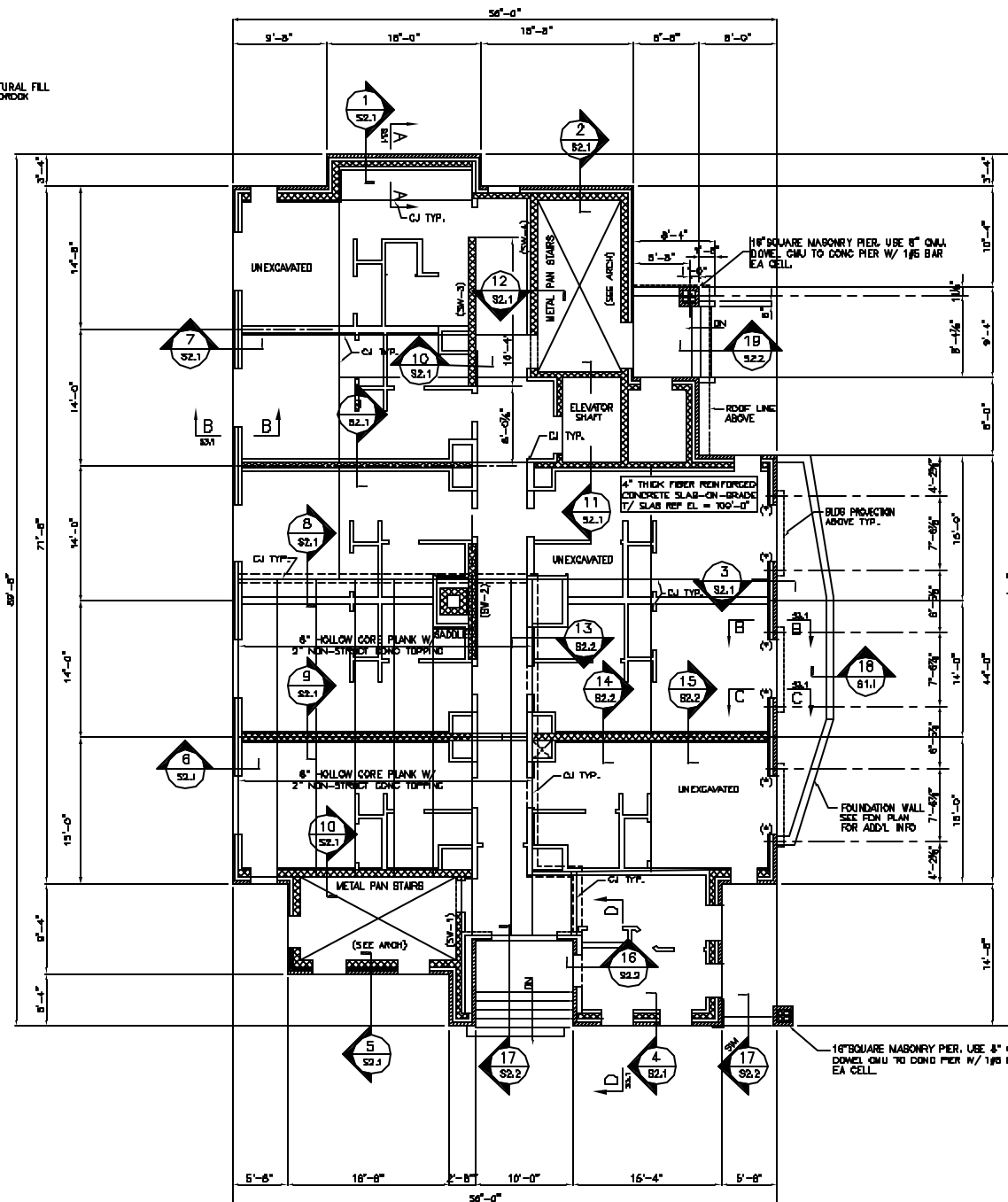


FOUNDATION PLAN

- NOTES:
- TOP OF SLAB-ON-GRADE EL. = 100'-0" UNO
 - FOUNDATION WALLS SHALL BE 18" THICK (TYP. UNO).
 - TOP OF FDN WALL EL. = 99'-10" (TYP UNO)
 - TOP OF EXTERIOR STRIP FOOTING EL. = SEE PLAN
 - TOP OF EXTERIOR SPREAD FOOTING EL. = SEE PLAN
 - TOP OF INTERIOR STRIP FOOTING EL. = VARIES (SEE PLAN)
 - CJ - INDICATES CONTROL JOINT (TYP)
 - SW1, SW2 ETC. INDICATES MASONRY SHEAR WALL. REFER TO DWG S3.3 FOR ADDITIONAL INFORMATION.
 - SEE TYP. ENTRY DOOR DETAIL DWG S2.2 FOR FDN DETAIL. REFER TO ARCHITECTURAL DRAWINGS FOR DOOR BONDOUT WIDTHS AND LOCATIONS.
 - TW EL - INDICATES TOP OF WALL ELEVATION
 - TS EL - INDICATES TOP OF BRICK SHELF ELEVATION



FIRST FLOOR FRAMING PLAN

- NOTES:
- FLOOR FRAMING CONSISTS OF 8" PRECAST HOLLOW CORE PLANK W/ 2" REINFORCED NON-STRUCT. CONCRETE TOPPING
 - FINISH FLOOR ELEVATION = 100'-0"
 - TOP OF PRECAST ELEVATION = 97'-10"
 - (SW) - INDICATES REINFORCED CONCRETE SHEAR WALL. SEE DRAWING S2.3 FOR REINFORCING
 - REFER TO MECHANICAL DRAWINGS FOR PENETRATIONS
 - SEE DRAWING S3.2 FOR TYPICAL W BEAM & WT BEARING DETAILS.
 - PRECAST MANUF. SHALL DESIGN THE 8" HOLLOW CORE PLANK FOR THE LOADING. PROVIDE IN THE GENERAL NOTES (REFER TO ARCHITECTURAL DRAWINGS FOR LOCATION OF SPECIFIC AREAS).
 - PROVIDE 8"x18" BOND BEAM W/ 2#5 BARS BOTTOM ABOVE ALL CMU WALL OPENINGS TYP. UNLESS NOTED OTHERWISE
 - PROVIDE PRECAST CONC UNTEL ABOVE BRICK VENEER OPENINGS W/ 2#4 BARS T&B ABOVE ALL WALL OPENINGS TYP. UNLESS NOTED OTHERWISE
 - (*) - INDICATES HSS4x4x1/2 COLUMN/ SUPPORT FRAME TO SUPPORT CORBELED BRICK ABOVE (SEE DWG S3.4 FOR ADD'L INFO)

THESE DRAWINGS HAVE BEEN DEVELOPED BY L&L STRUCTURAL ENGINEERING SERVICES, INC. FOR THE TITLED SET ONLY. THE DRAWINGS ARE THE SOLE PROPERTY OF L&L STRUCTURAL ENGINEERING SERVICES, INC. AND THEY SHALL NOT BE USED, REPRODUCED OR ALTERED WITHOUT THE WRITTEN CONSENT OF L&L STRUCTURAL ENGINEERING SERVICES, INC.

CWS
CWS Architects
 Architecture
 Space Planning
 Value Design
 434 Cumberland Avenue
 Portland, ME 04101
 Phone: (207) 771-1441
 Fax: (207) 771-1816
 www.CWSarch.com



Director
CCYBRO, L.P.
 c/o Cumberland County YMCA
 78 Forest Ave. Portland, ME 04101
 (207) 874-1111

Client
YMCA APARTMENTS
 at 231
HIGH STREET
 High Street - Portland, Maine

Project No. 234H

Drawing Title
FOUNDATION AND FIRST FLOOR FRAMING PLAN

Scale: 1/8" = 1'-0"
 Date: DECEMBER 10, 2004

- Revisions:
- ▲ VALUE ENGINEERING REVISIONS
 - △
 - △
 - △
 - △
 - △

Drawing Number:
S1.1

ISSUED FOR PERMITTING