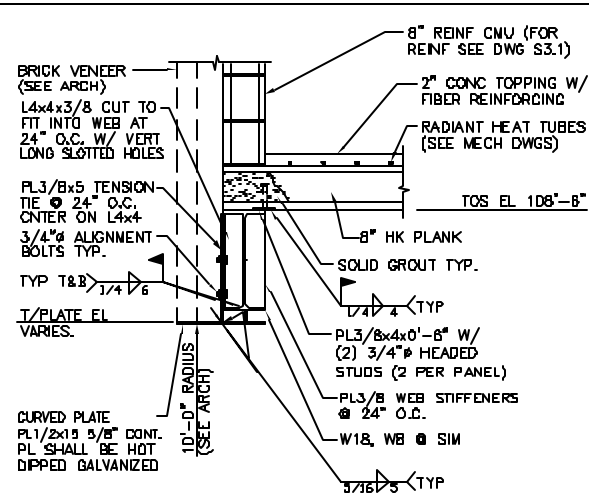
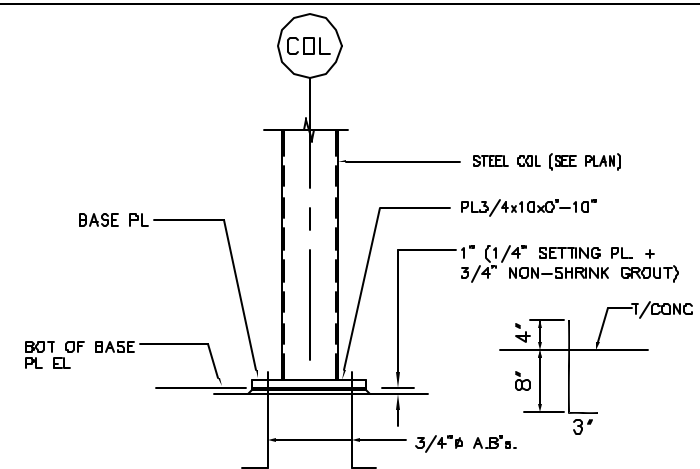


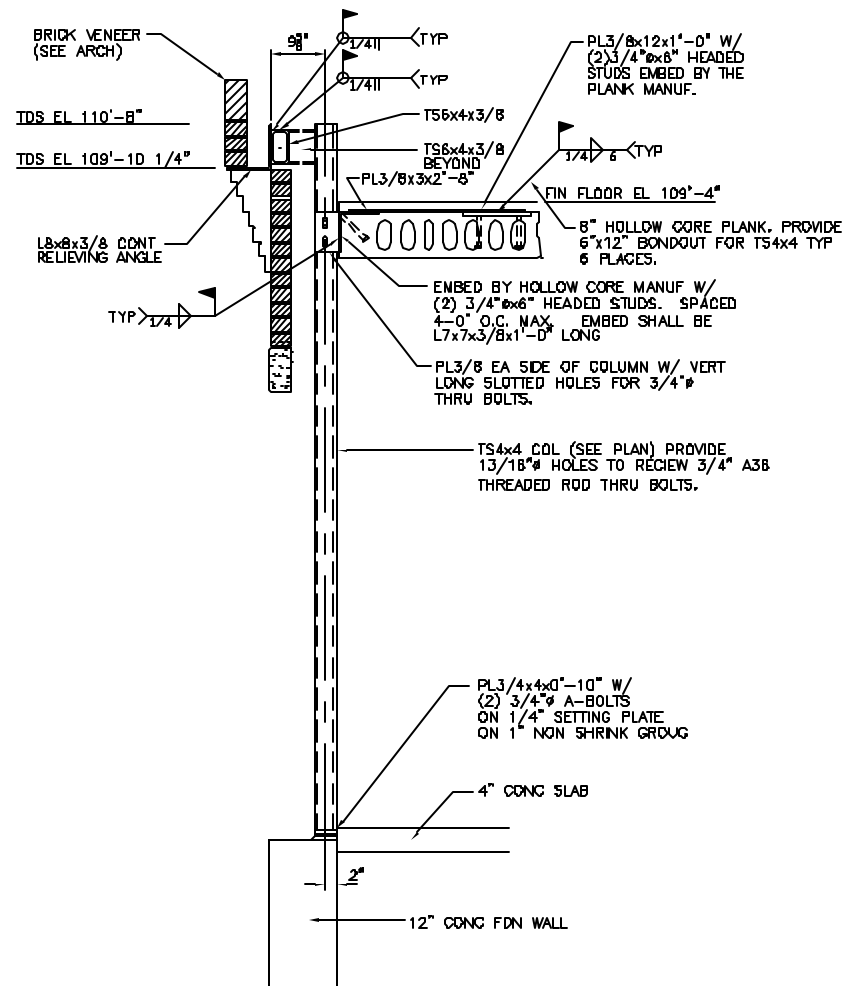
SECTION 1
3/4" = 1'-0" S3.1, S3.2, S3.3



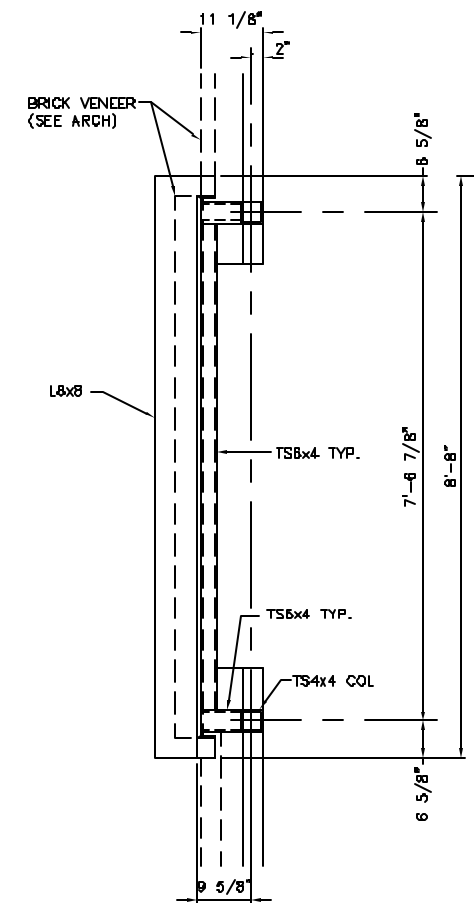
SECTION 2
3/4" = 1'-0" S1.2
NOTE: 1. PROVIDE 3/8\"/>



TYP COLUMN BASE DETAIL
N.T.S.



DETAIL H
3/4" = 1'-0" S3.1



PLAN VIEW OF CORBEL SUPPORT
3/4" = 1'-0"
NOTE: 1. TIE TO FLOOR AS SHOWN IN SECTION H/S3.4

CWS
CWS Architects
Architects
Space Planning
Value Design
434 Cumberland Avenue
Portland, ME 04101
Phone: (207) 774-4444
Fax: (207) 774-4818
www.CWSArch.com

STATE OF MAINE
REGISTERED PROFESSIONAL ENGINEER

Owner:
CCYSRO, L.P.
c/o Cumberland County YMCA
70 Forest Ave Portland, ME 04101
(207) 874-1111

Client:

YMCA APARTMENTS
at 251
HIGH STREET
High Street - Portland, Maine

Project No: 23061

Drawing Title:
FRAMING DETAILS

Scale: 3/4" = 1'-0"
Date: DECEMBER 10, 2004
Revisions:

Revision Number:
S3.4

THESE DRAWINGS HAVE BEEN DEVELOPED BY L&L STRUCTURAL ENGINEERING SERVICES, INC. FOR THE TITLED SET ONLY. THE DRAWINGS ARE THE SOLE PROPERTY OF L&L STRUCTURAL ENGINEERING SERVICES, INC. AND THEY SHALL NOT BE USED, LOANED, COPIED OR ALTERED WITHOUT THE WRITTEN CONSENT OF L&L STRUCTURAL ENGINEERING SERVICES, INC.