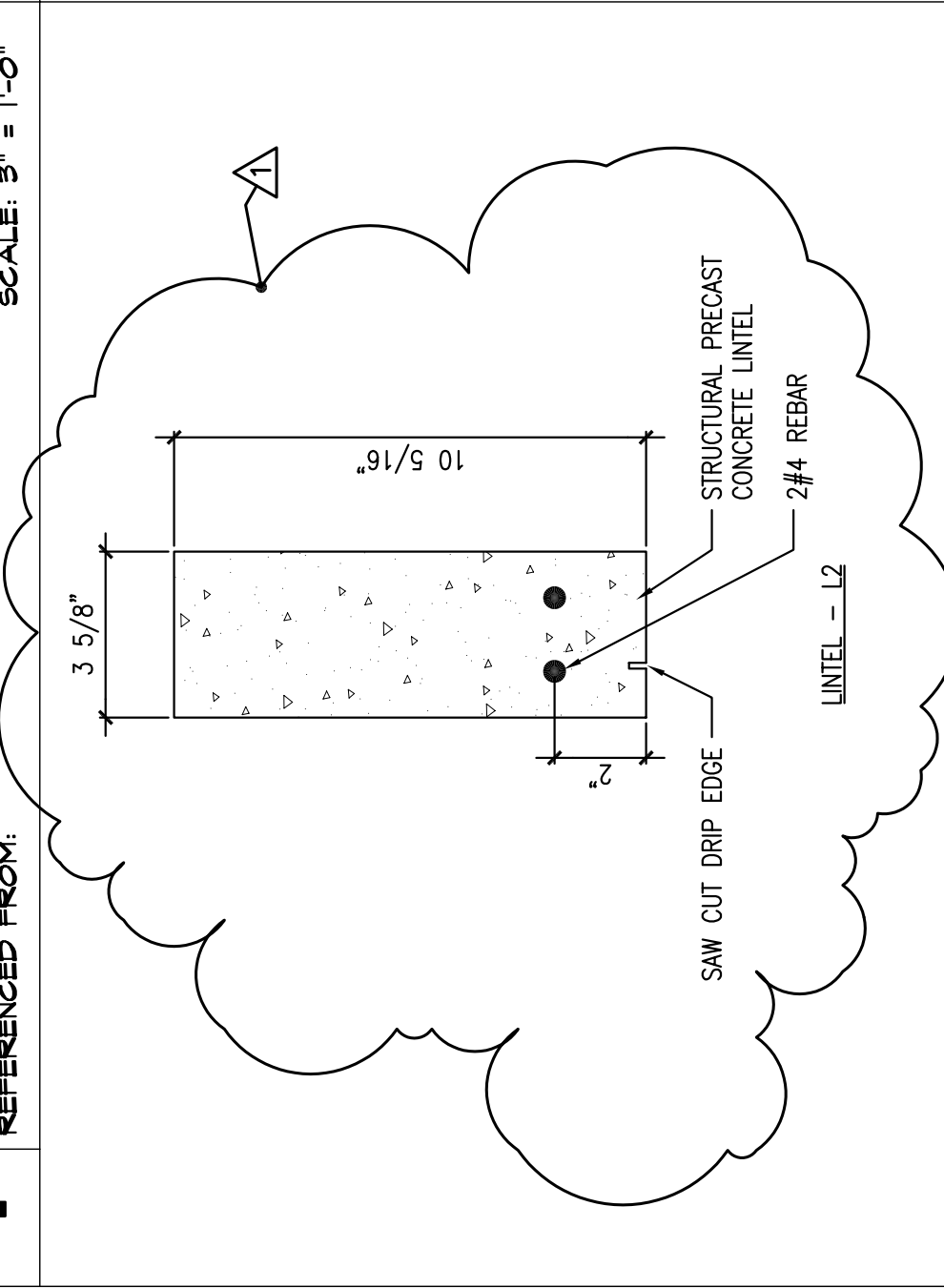


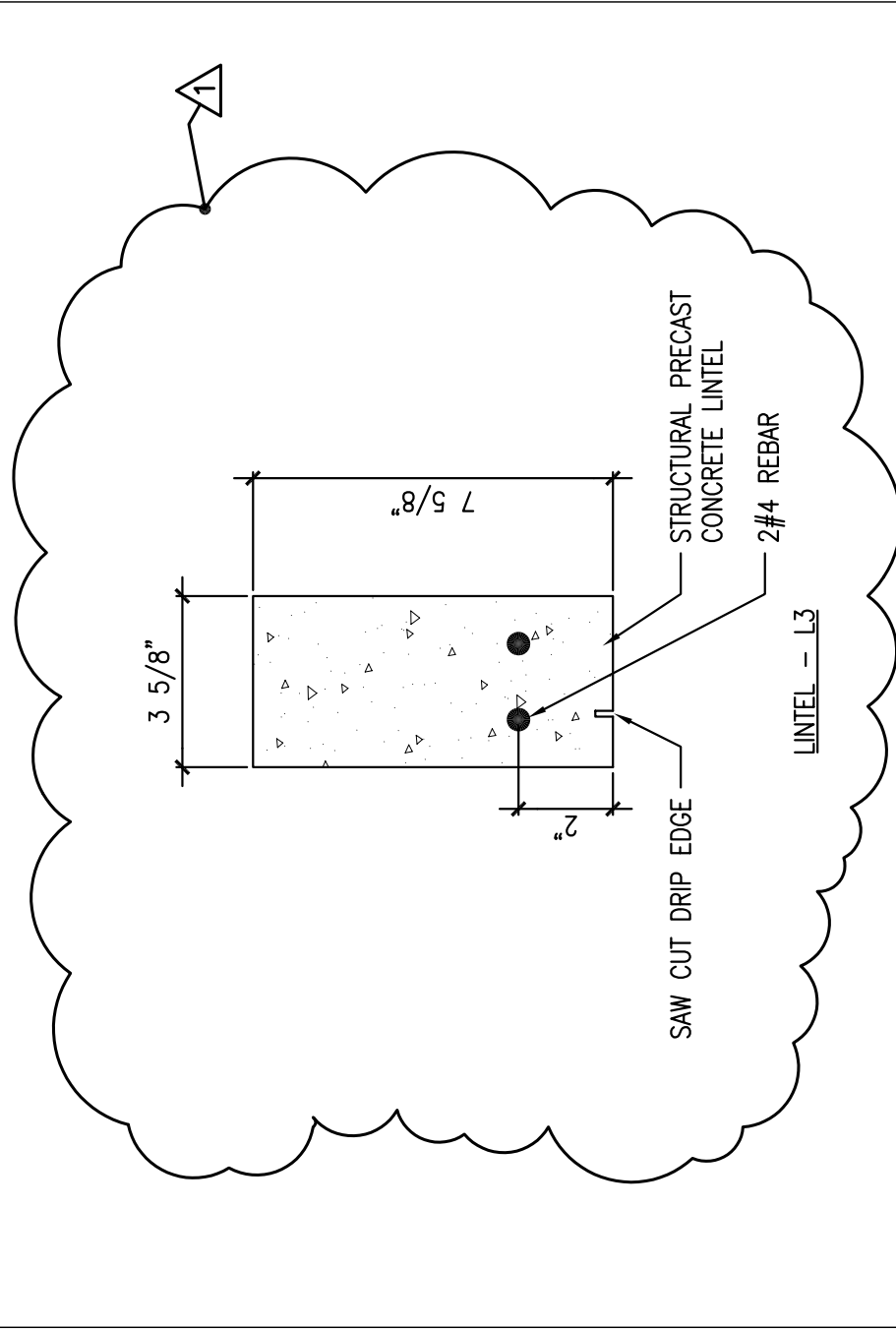
1 LINTEL - L1 SECTION

REFERENCED FROM: SCALE: 3" = 1'-0"



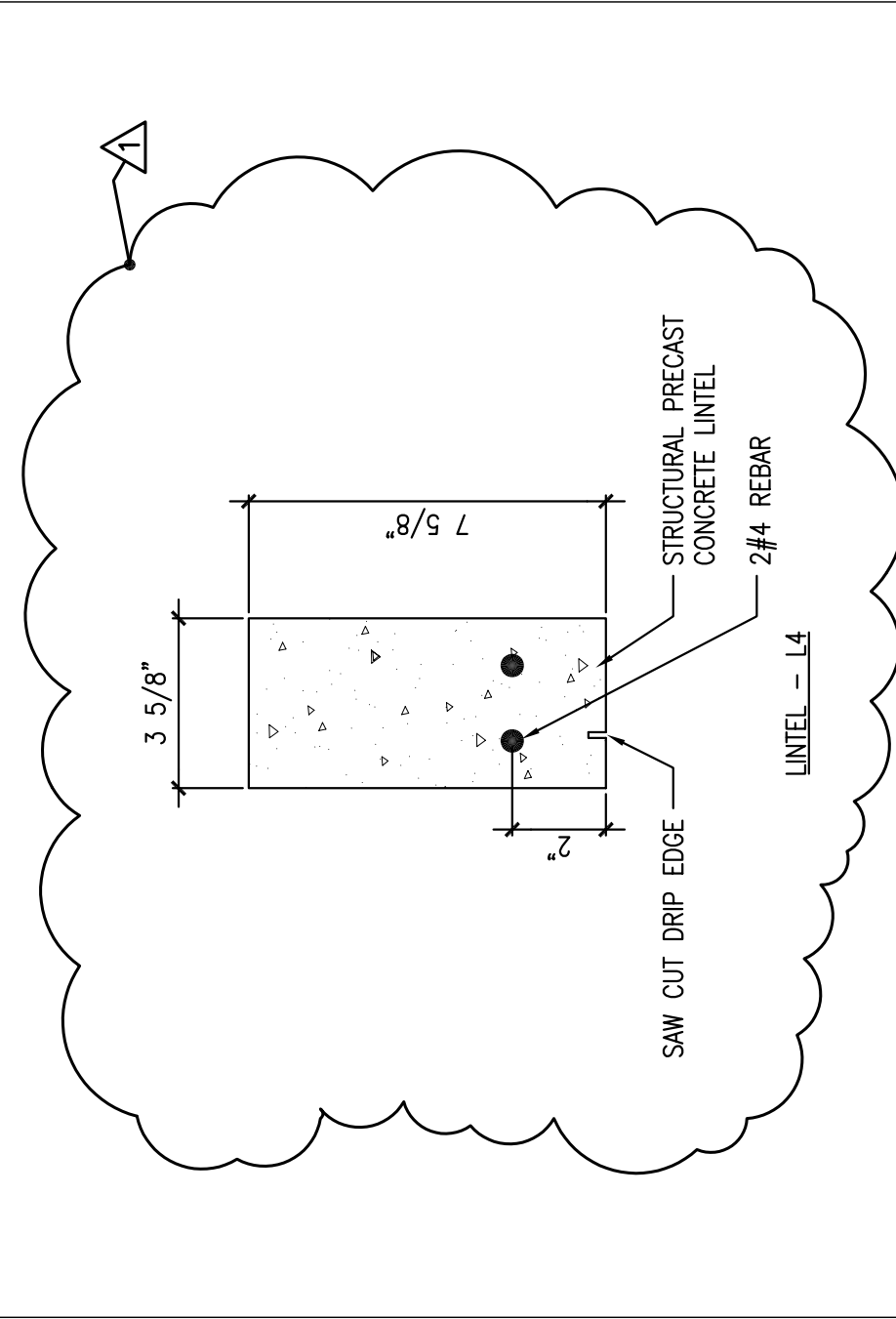
5 LINTEL - L2 SECTION

REFERENCED FROM: SCALE: 3" = 1'-0"



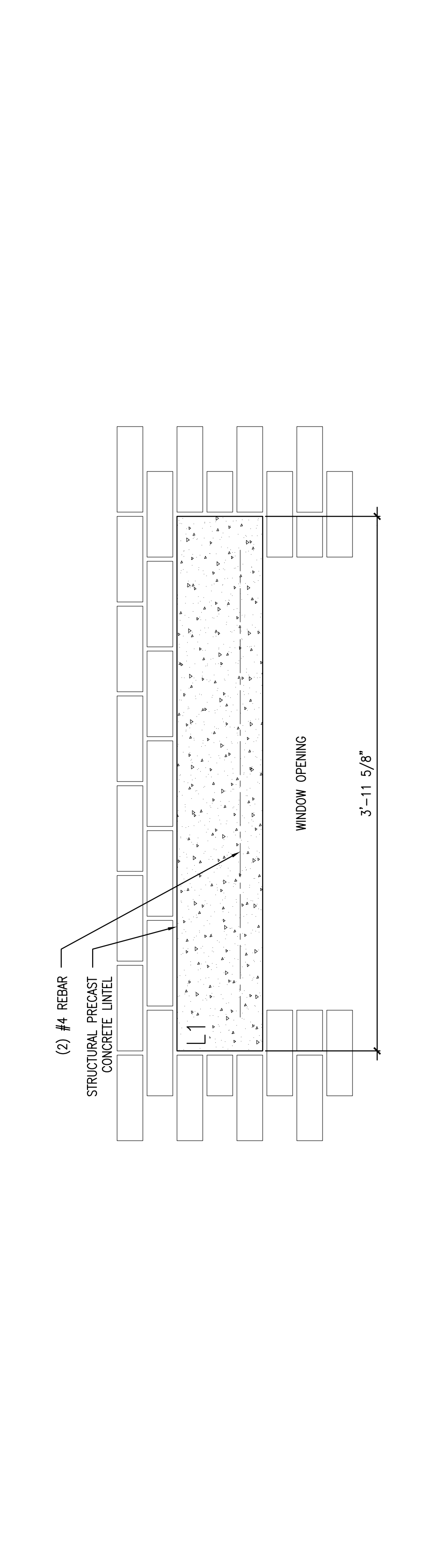
9 LINTEL - L3 SECTION

REFERENCED FROM: SCALE: 3" = 1'-0"



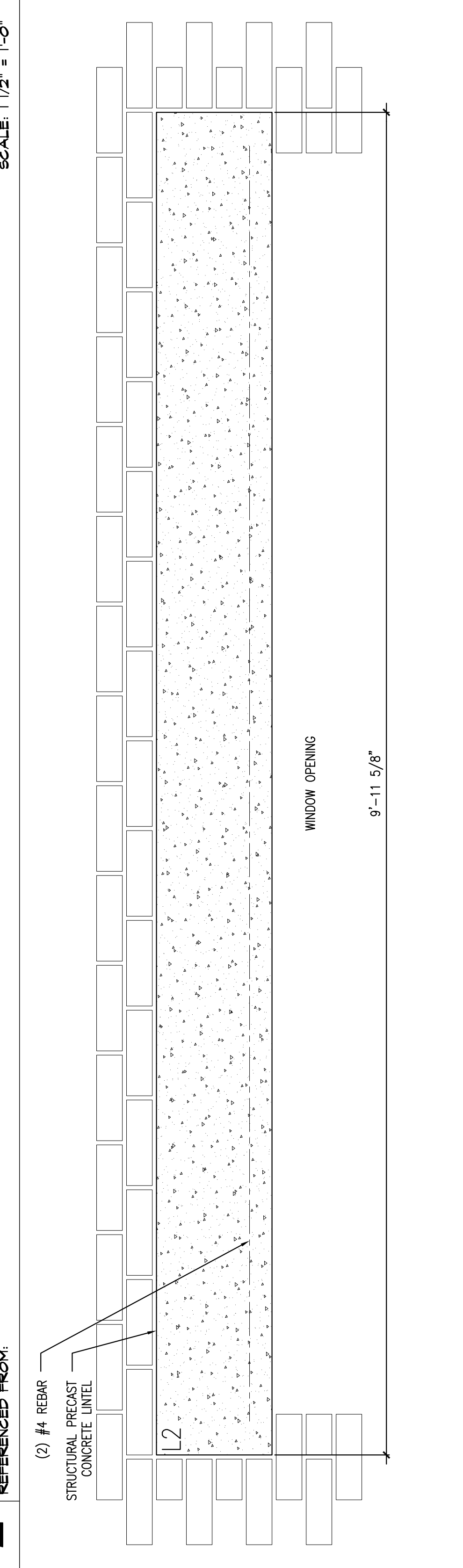
13 LINTEL - L4 SECTION

REFERENCED FROM: SCALE: 3" = 1'-0"



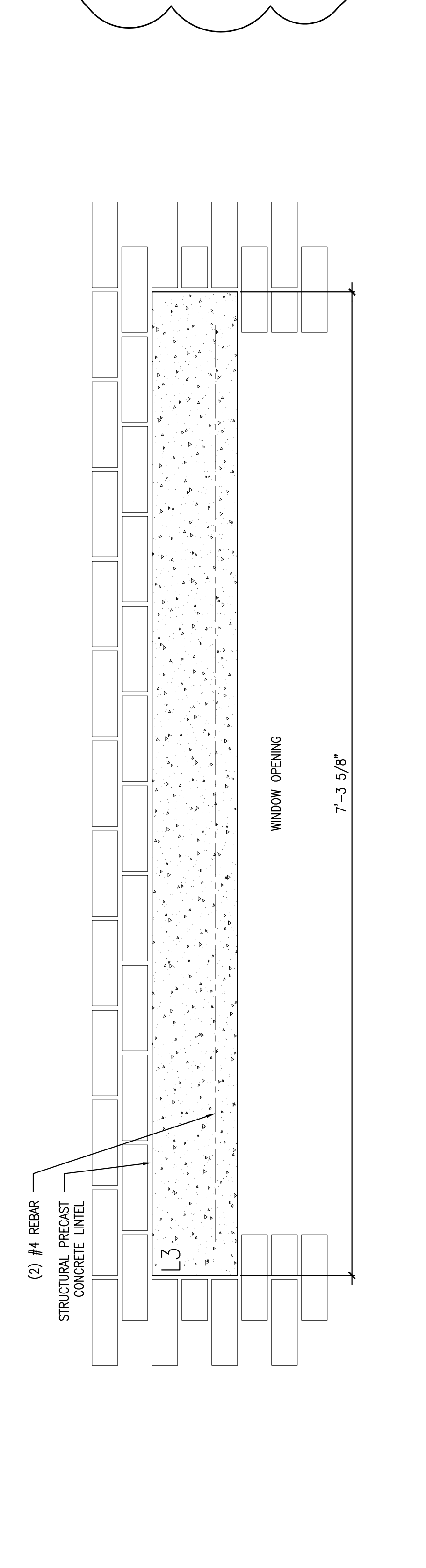
2 PRECAST CONCRETE LINTEL - L1 ELEVATION

REFERENCED FROM: SCALE: 1 1/2" = 1'-0"



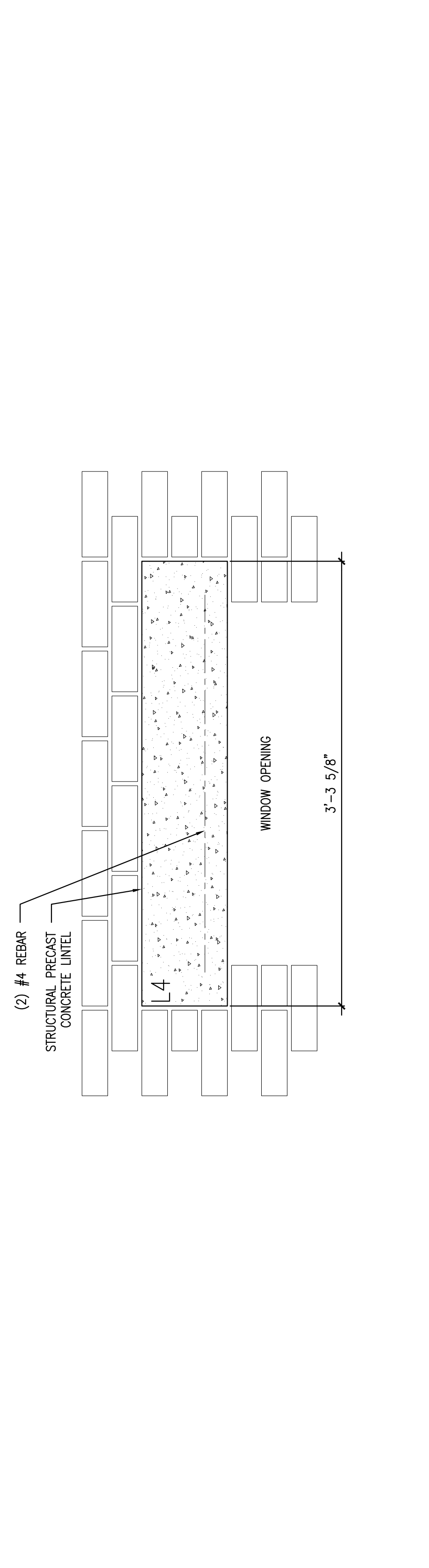
6 PRECAST CONCRETE LINTEL - L2 ELEVATION

REFERENCED FROM: SCALE: 1 1/2" = 1'-0"



10 PRECAST CONCRETE LINTEL - L3 ELEVATION

REFERENCED FROM: SCALE: 1 1/2" = 1'-0"



14 PRECAST CONCRETE LINTEL - L4 ELEVATION

REFERENCED FROM: SCALE: 1 1/2" = 1'-0"



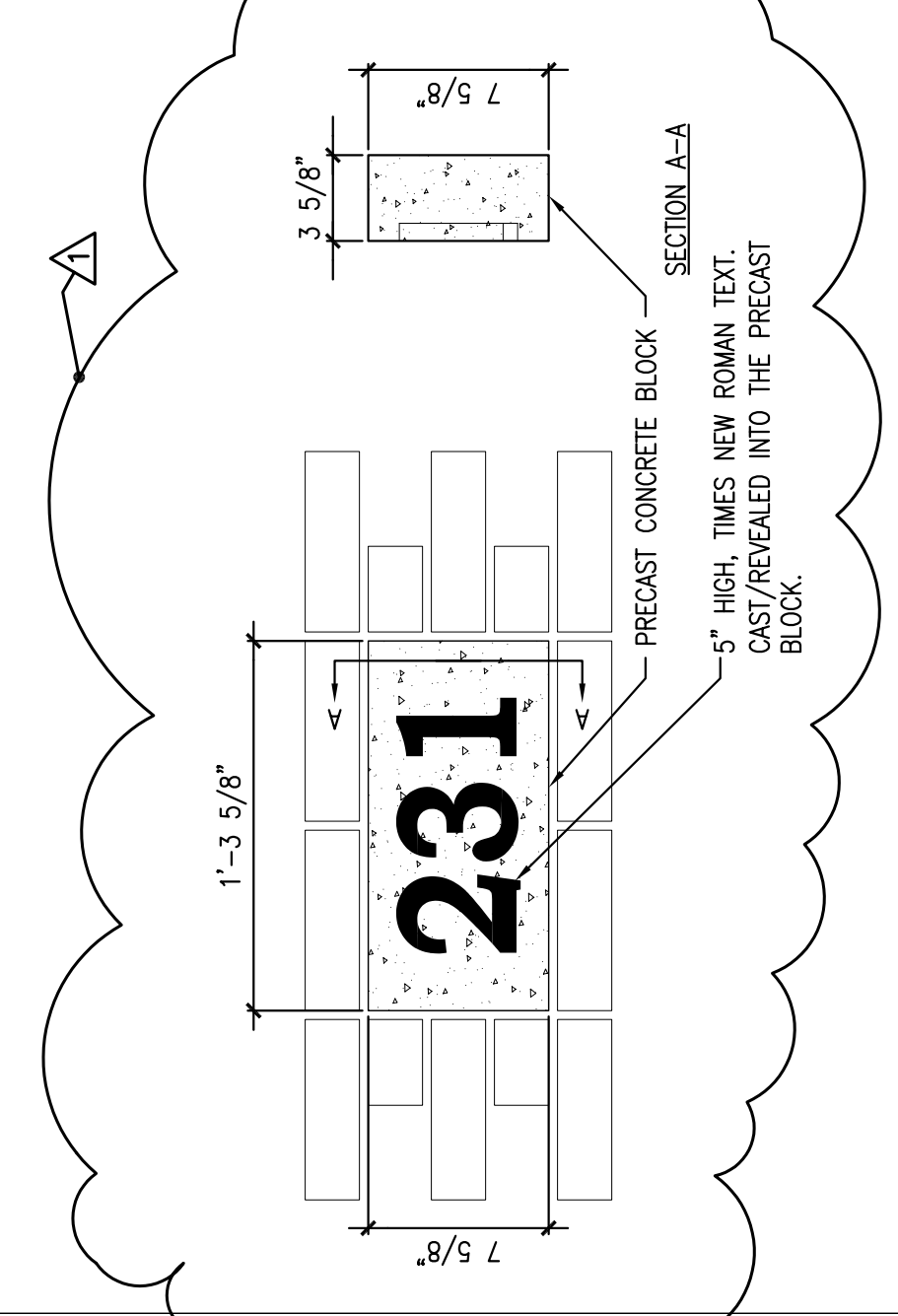
4 NOT USED

REFERENCED FROM:

SCALE:

CWS Architects
 Architecture
 Space Planning
 Value Design
 434 Cumberland Avenue
 Portland, ME 04101
 Phone: (207)774-4441
 Fax: (207)774-4016
 www.CWSarch.com

Owner: **CCYSRO, L.P.**
 c/o Cumberland County YMCA
 70 Forest Ave Portland, ME 04101
 (207) 874-1111
 Client:



12 ADDRESS BLOCK DETAIL

REFERENCED FROM: SCALE: 1 1/2" = 1'-0"

Project No: 03407ysh
 Drawing Title: **MISC. DETAILS**

Scale: AS NOTED
 Date: DECEMBER 10, 2004
 Revisions:
 VALUE ENGINEERING REVS
 12/10/04

Drawing Number: **A7.1**

16 NOT USED

REFERENCED FROM:

SCALE: