



CWS Architects

Architecture

Space Planning

Value Design

434 Cumberland Avenue

Portland, ME 04101

Phone: (207)774-4441

Fax: (207)774-4016

www.CWSarch.com

Owner:

CCYSRO, L.P.

c/o Cumberland County YMCA

70 Forrest Ave Portland, ME 04101

(207) 874-1111

Client:

YMCA APARTMENTS

at 231

HIGH STREET

High Street - Portland, Maine

Project No: 03407ysh

Drawing Title:

EXTERIOR BUILDING ELEVATION

Scale: 1/4" = 1'-0"

Date: DECEMBER 10, 2004

Revisions:

VALUE ENGINEERING REVS

12/10/04

1

2

3

4

5

6

7

8

Drawing Number:

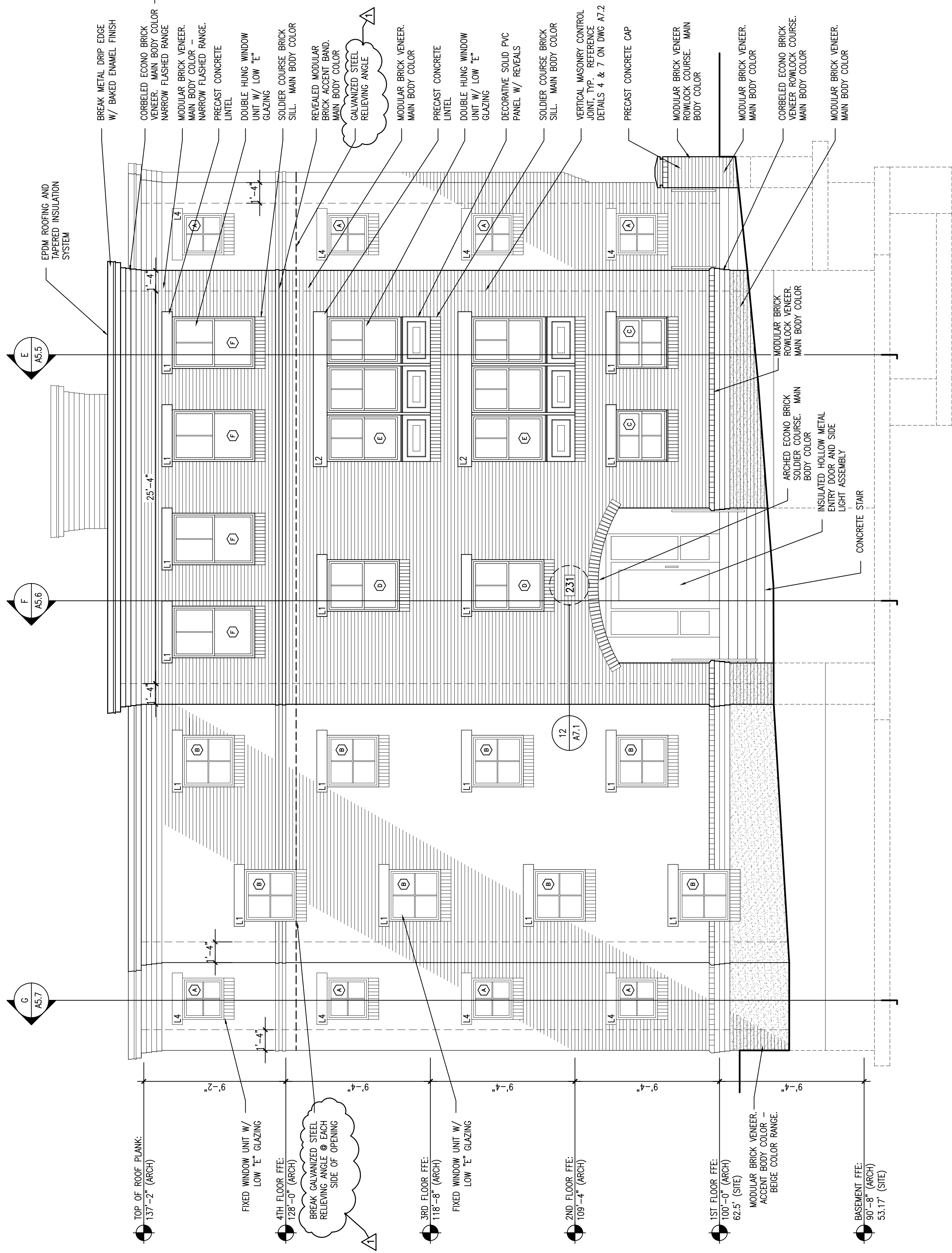
A3.1

A BUILDING SECTION

REFERENCED FROM:

SCALE: 1/4" = 1'-0"

ISSUED FOR PERMITTING 12/10/04



- TOP OF ROOF PLANK: 137'-2" (ARCH)
- 4TH FLOOR FFE: 128'-0" (ARCH)
- 3RD FLOOR FFE: 118'-8" (ARCH)
- 2ND FLOOR FFE: 109'-4" (ARCH)
- 1ST FLOOR FFE: 100'-0" (ARCH)
- BASEMENT FFE: 90'-8" (ARCH)

BREAK METAL DRIP EDGE W/ BAKED ENAMEL FINISH

CORBELED ECONO BRICK VENEER. MAIN BODY COLOR. NARROW FLASHED RANGE.

MODULAR BRICK VENEER. MAIN BODY COLOR. NARROW FLASHED RANGE.

PRECAST CONCRETE LINTEL

DOUBLE HUNG WINDOW UNIT W/ LOW "E" GLAZING

SOLDIER COURSE BRICK SILL. MAIN BODY COLOR

REVEALED MODULAR BRICK ACCENT BAND. MAIN BODY COLOR

GALVANIZED STEEL RELIEVING ANGLE

MODULAR BRICK VENEER. MAIN BODY COLOR

PRECAST CONCRETE LINTEL

DOUBLE HUNG WINDOW UNIT W/ LOW "E" GLAZING

DECORATIVE SOLID PVC PANEL W/ REVEALS

SOLDIER COURSE BRICK SILL. MAIN BODY COLOR

VERTICAL MASONRY CONTROL JOINT. TYP. REFERENCE DETAILS 4 & 7 ON DWG A7.2

PRECAST CONCRETE CAP

MODULAR BRICK VENEER ROWLOCK COURSE. MAIN BODY COLOR

MODULAR BRICK VENEER. MAIN BODY COLOR

CORBELED ECONO BRICK VENEER ROWLOCK COURSE. MAIN BODY COLOR

MODULAR BRICK VENEER. MAIN BODY COLOR

EPDM ROOFING AND TAPERED INSULATION SYSTEM

ARCHED ECONO BRICK SOLDIER COURSE. MAIN BODY COLOR

INSULATED HOLLOW METAL ENTRY DOOR AND SIDE LIGHT ASSEMBLY

CONCRETE STAIR