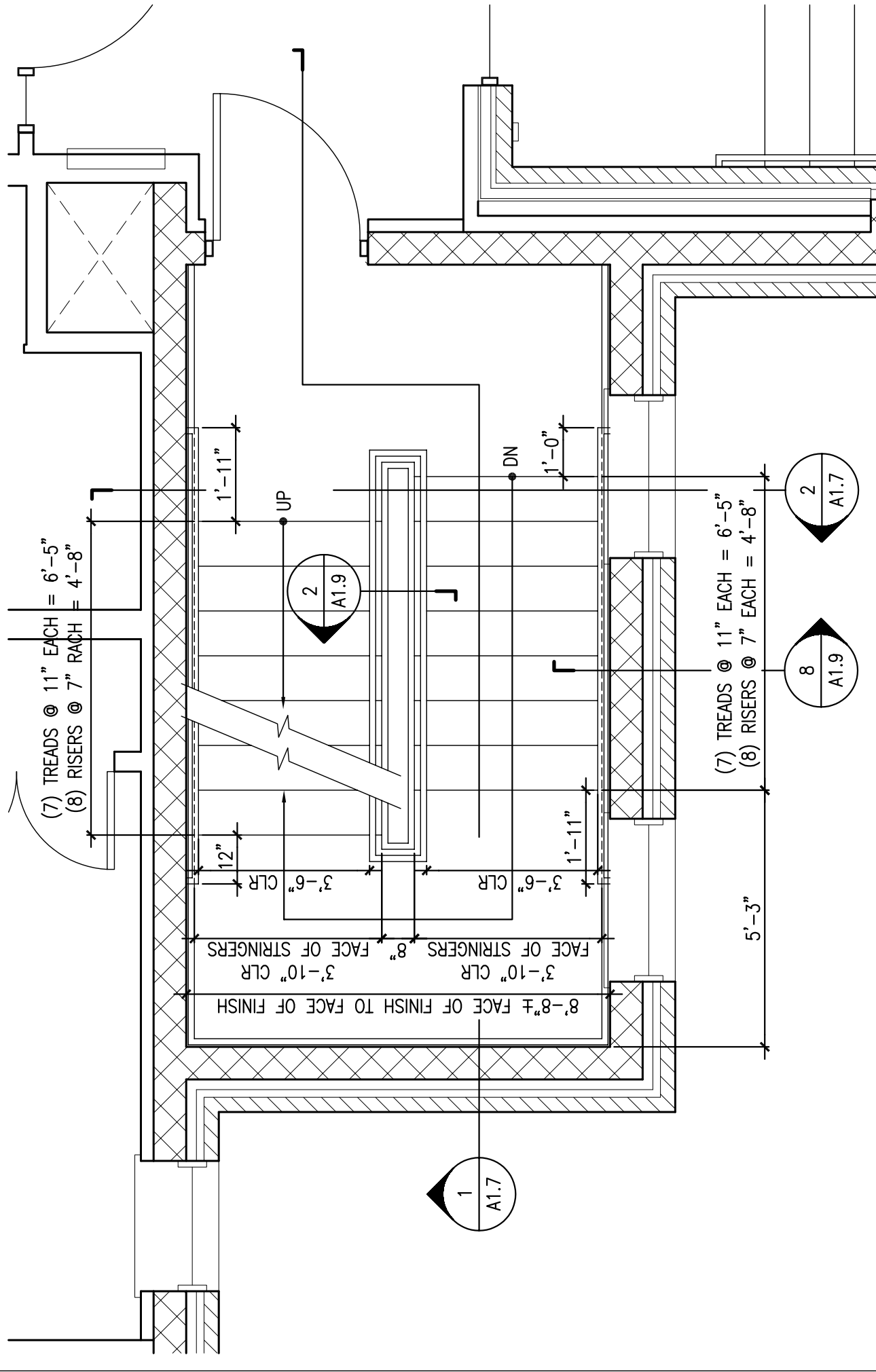
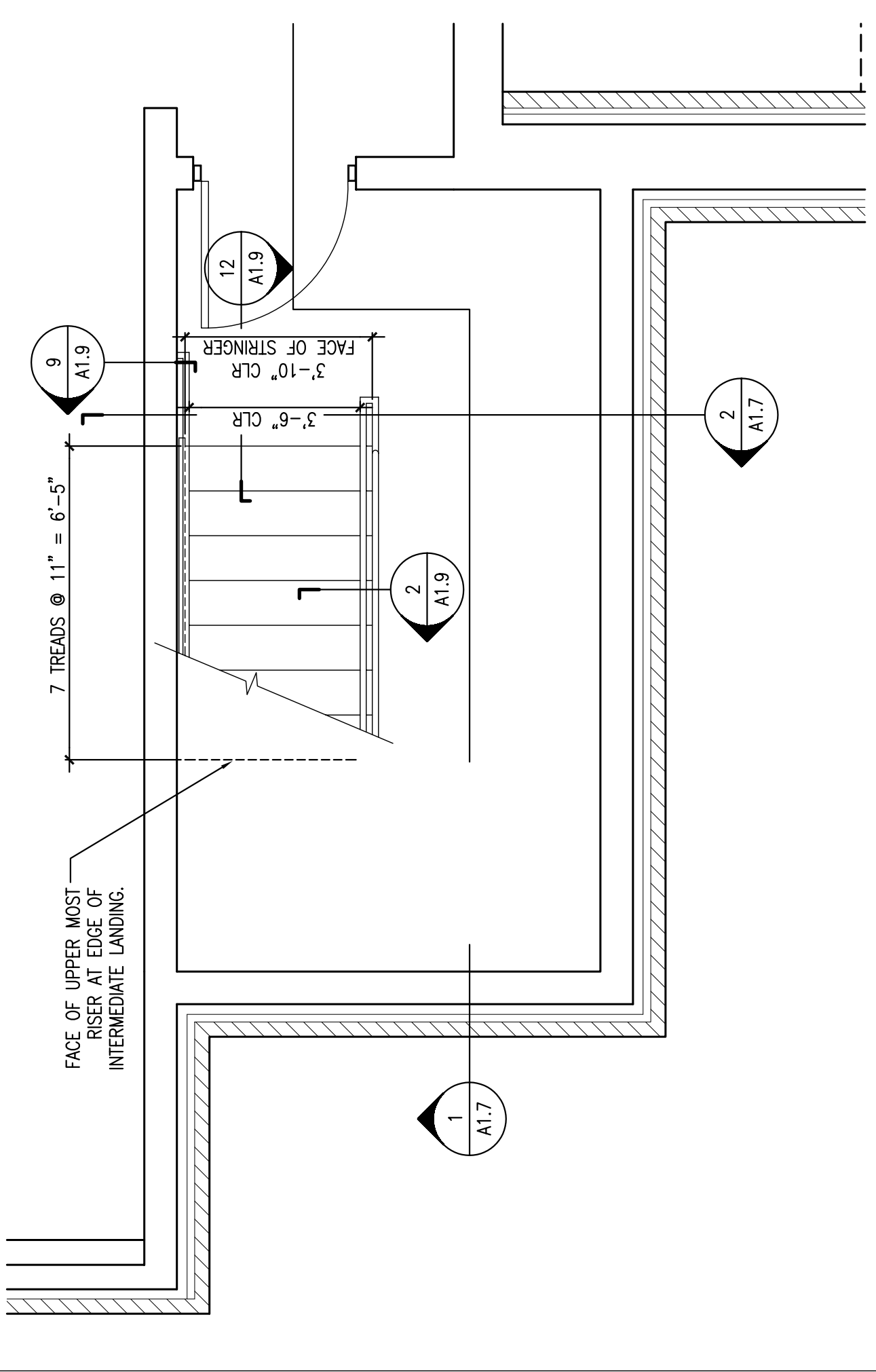


**1** ENLARGED STAIR NO. 1 | PLAN - SECOND FLOOR  
 REFERENCED FROM: SCALE: 3/8" = 1'-0"



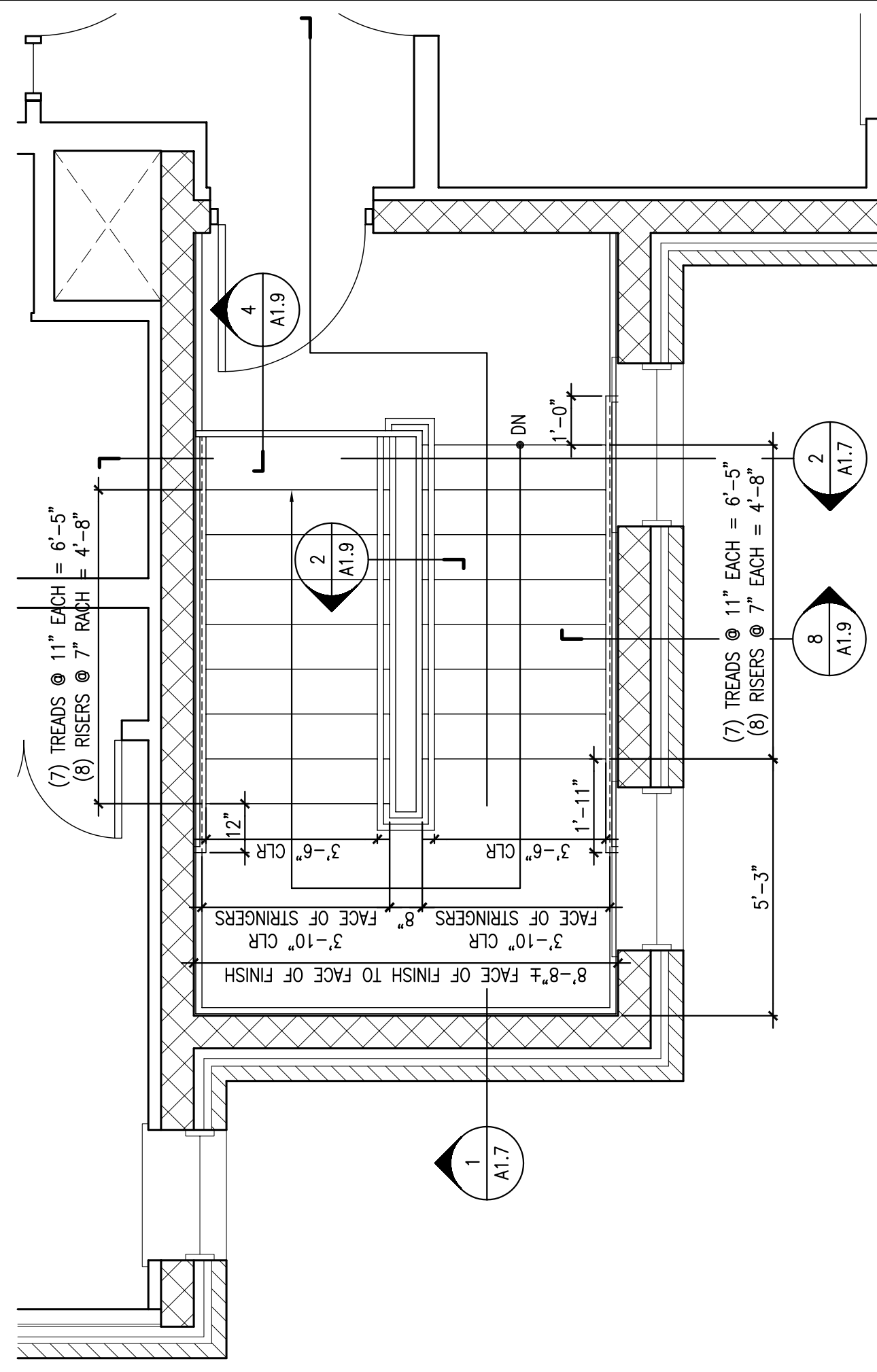
**4** ENLARGED STAIR NO. 1 | PLAN - FIRST FLOOR  
 REFERENCED FROM: SCALE: 3/8" = 1'-0"



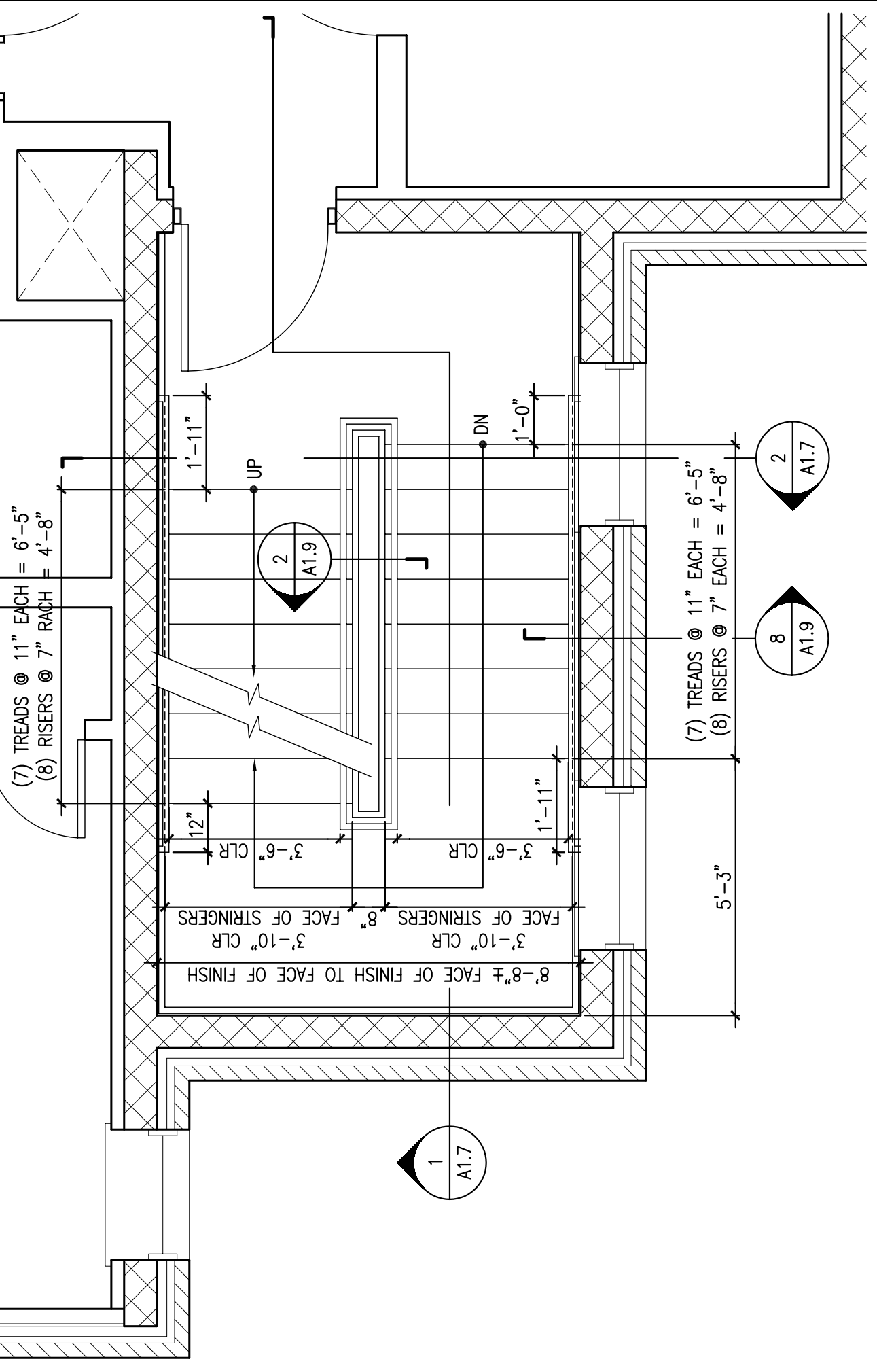
**7** ENLARGED STAIR NO. 1 | PLAN - BASEMENT  
 REFERENCED FROM: SCALE: 3/8" = 1'-0"



**2** NOT USED  
 REFERENCED FROM: SCALE:



**5** ENLARGED STAIR NO. 1 | PLAN - THIRD FLOOR  
 REFERENCED FROM: SCALE: 3/8" = 1'-0"



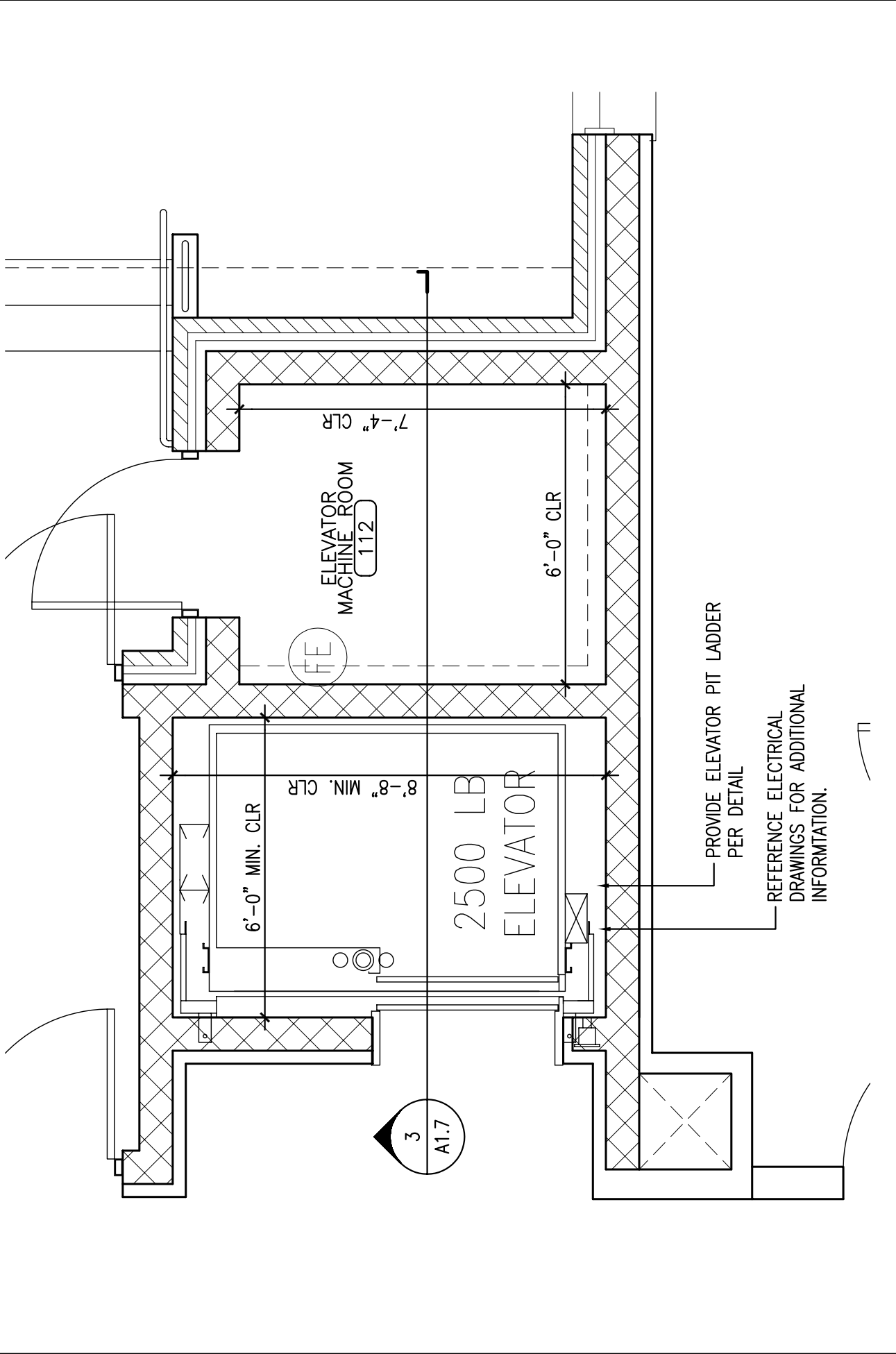
**8** ENLARGED STAIR NO. 1 | PLAN - SECOND FLOOR  
 REFERENCED FROM: SCALE: 3/8" = 1'-0"



**3** NOT USED  
 REFERENCED FROM: SCALE:



**6** NOT USED  
 REFERENCED FROM: SCALE:



**9** ENLARGED ELEVATOR PLAN  
 REFERENCED FROM: SCALE: 3/8" = 1'-0"

**CWS Architects**  
 Architecture  
 Space Planning  
 Value Design  
 434 Cumberland Avenue  
 Portland, ME 04101  
 Phone: (207)774-4441  
 Fax: (207)774-4016  
 www.CWSArch.com

**CCYSRO, L.P.**  
 c/o Cumberland County YMCA  
 70 Forest Ave Portland, ME 04101  
 (207) 874-1111  
 Client:

**YMCA APARTMENTS**  
**at 231**  
**HIGH STREET**  
 High Street - Portland, Maine

Project No: 03407ysh  
 Drawing Title:  
**ENLARGED STAIR**  
**NO. 1 & ELEVATOR**  
**PLANS**  
 Scale: 3/8" = 1'-0"  
 Date: DECEMBER 10, 2004  
 Revisions:  
 VALUE ENGINEERING REVS  
 12/10/04  
 Drawing Number:  
**A1.5**