

18 AUG 05

33 Boyd St 9:30 AM. Sited
5 EVENT ST. CHIMNEY FALLING

245 HIGH ST

FRONT STEPS MISSING MORTAR + BRICKS
WRONG BULB IN LIGHTING FIXTURE - EXTENSION

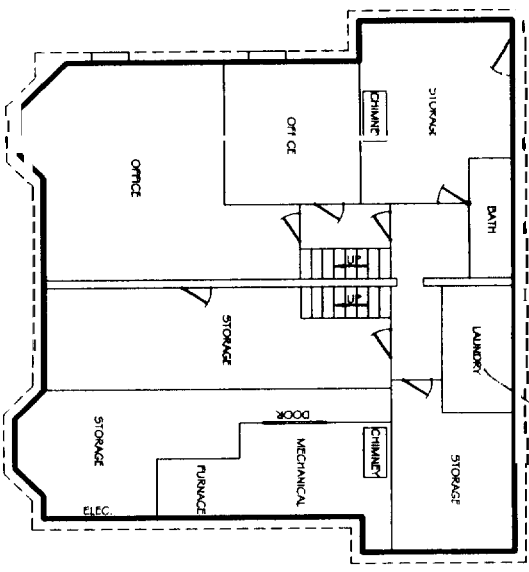
BASMENT - OPEN BOXES ELECTRICAL, SWITCH COVERS.
PADLOCKED BASMENT EGRESS DOOR
BASMENT UNIT - ZOWIE - FIRE RATED DOOR

1st FLOOR - STAIRCASE MISSING BAILISTERS ON RAILING TO
2ND FLOOR LEFT SIDE - RIGHT ALSO
MISSING
- LEFT - 3 ROOMS - 1 KITCHEN, 1 BATH
RIGHT SAME - HEEDS SMOKES.

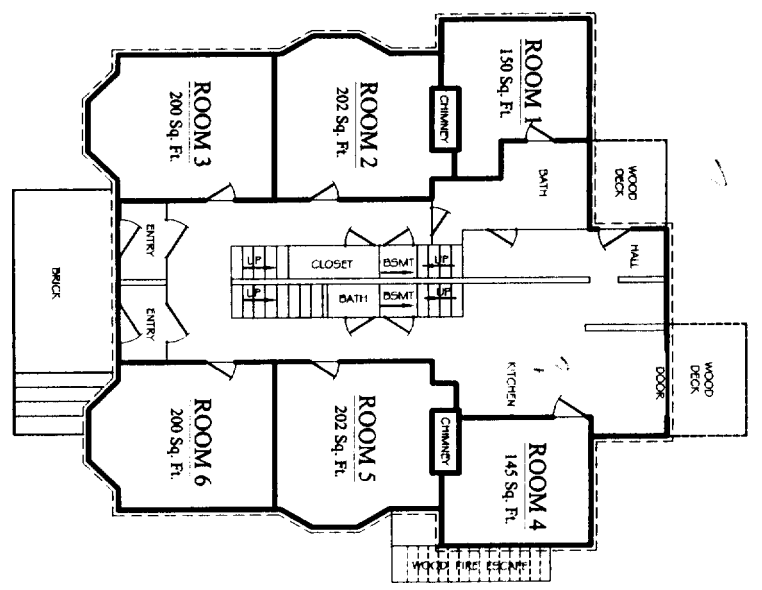
2ND FLOOR LEFT - OPENING IN WALL @ EXISTING PAY PHONE
2 BATHS ROOMS
RIGHT - 3 UNIT SAME AS LEFT
COMMON KITCHEN + BATH
BOTH SIDES WINDERS - NOT VALID FOR R-1

3RD FLOOR LEFT - COMMON BATH + KITCHEN
KITCHEN HOT PLATE, MICROWAVE
2 LEFT - UNIT } EGRESS 19 1/2 INCH
2 RIGHT - UNITS }

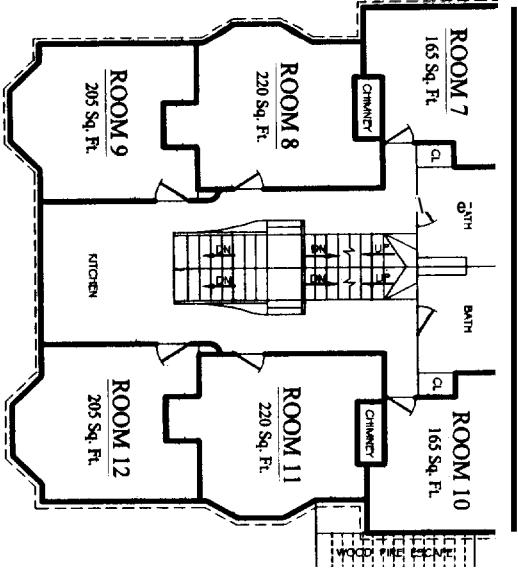
GORDON SUGGARD
- P.O. Box 891
PORTLAND, ME. 04108
8/11/05



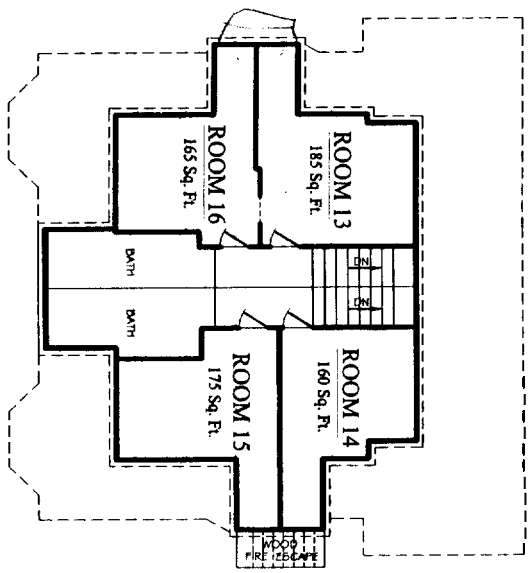
BASEMENT
HIGH STREET



FIRST FLOOR
HIGH STREET

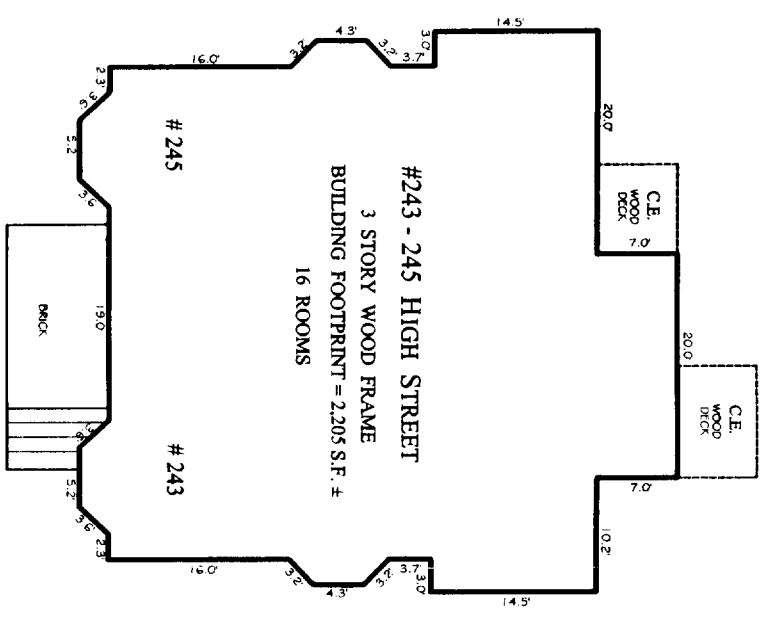


SECOND FLOOR
HIGH STREET

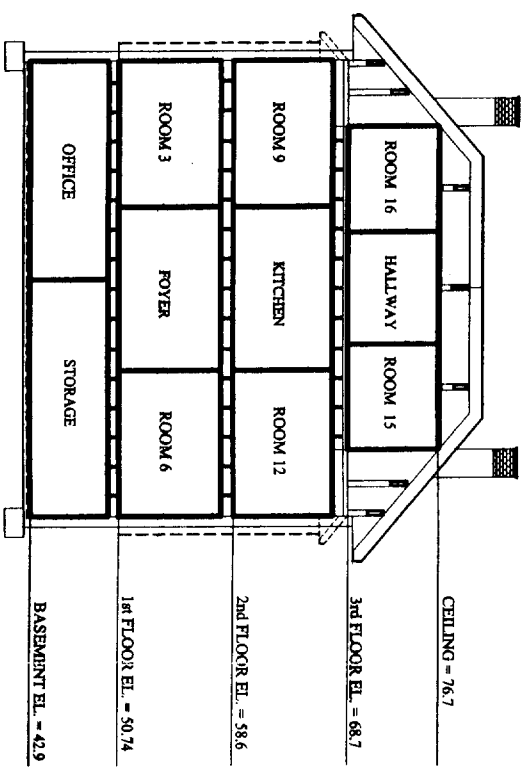


THIRD FLOOR
HIGH STREET

VERTICAL BOUNDARY

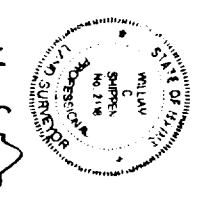


PLAN VIEW
HIGH STREET



HORIZONTAL BOUNDARY
HIGH STREET

NOTE: ELEVATIONS BASED ON CITY DATUM



HORIZONTAL & VERTICAL BOUNDARIES		#243-245 HIGH STREET, PORTLAND, MAINE	
MADE FOR		R.G. SIMONDS TRUST	
104 WEST STREET, PORTLAND, MAINE			
OWEN HASKELL, INC.		18 CASO ST., PORTLAND, ME 04101 (807)774-0424	
PROFESSIONAL LAND SURVEYORS			
Drawn By: EC	Date: MARCH 3, 2003	Job No: 2003-020P	Dwg. No.
Trace By: JLM	Scale:		
Check By: WCS			