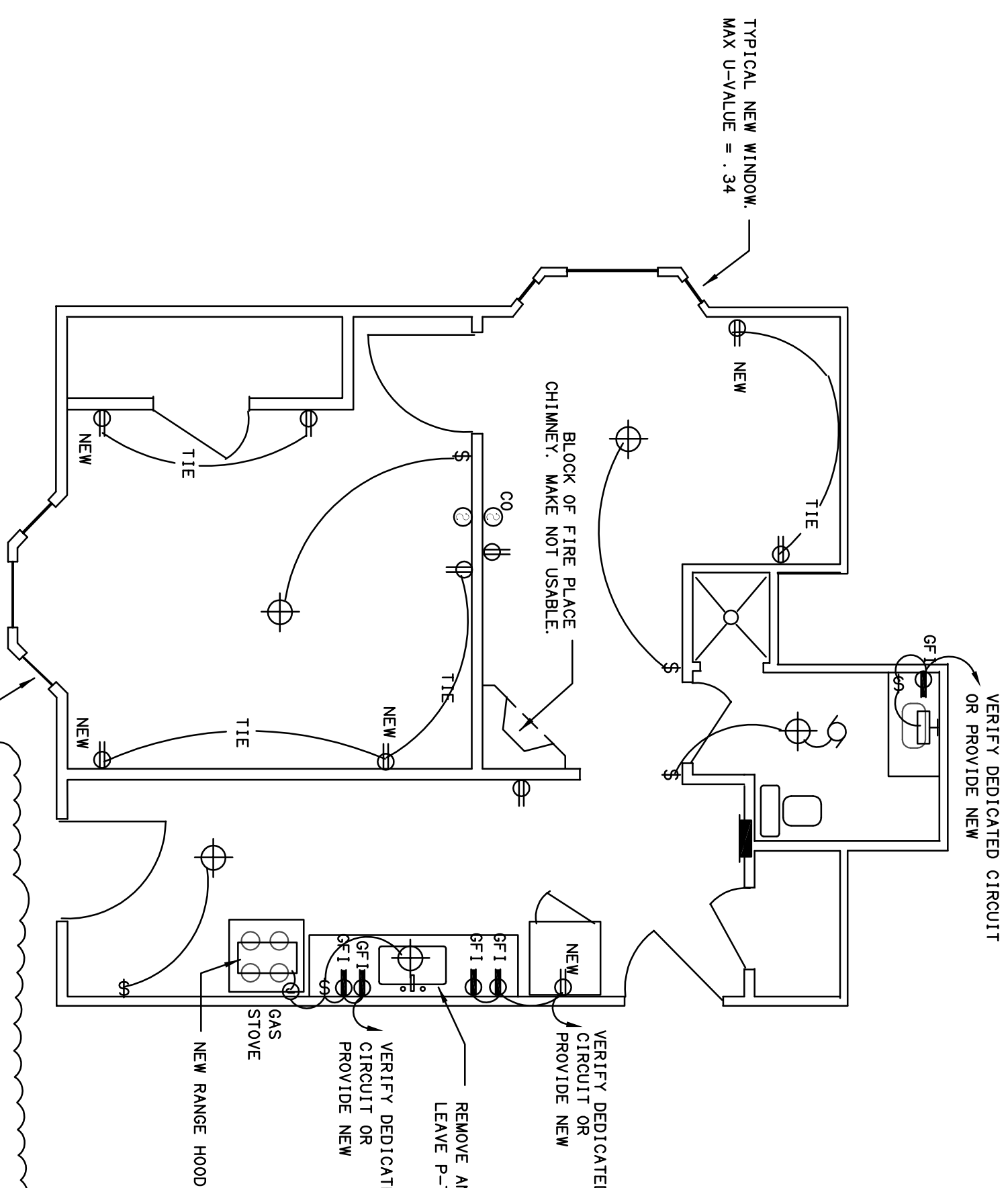


EXISTING CONDITIONS AND DEMO PLAN

1/4" = 1'-0"

GENERAL DEMO NOTES:

1. REMOVE AND REPLACE SMOKE DAMAGED DR/WALL WHERE REQUIRED.
2. REMOVE AND REPLACE KITCHEN CABINETS AND RANGE HOOD.
3. REMOVE AND REPLACE LIGHT FIXTURES.
4. REMOVE AND REPLACE SWITCHES AND DIMMERS.
5. REMOVE WIRING WHERE AFFECTED BY HEAT INSULATION DAMAGE. INCLUDE AT LEAST ENTIRE LIVING ROOM AREA.
6. REMOVE AND REPLACE ALL WINDOWS.
7. REMOVE AND REPLACE BATH VANITY CABINET, MIRROR, AND LIGHT. RE-USE SINK AND VALVE SETS IF POSSIBLE.
8. REMOVE BATH FAN/LIGHT AS NOTED.
9. REPLACE BATH FAN/LIGHT COMBO FIXTURE.



PROPOSED PLAN

1/4" = 1'-0"

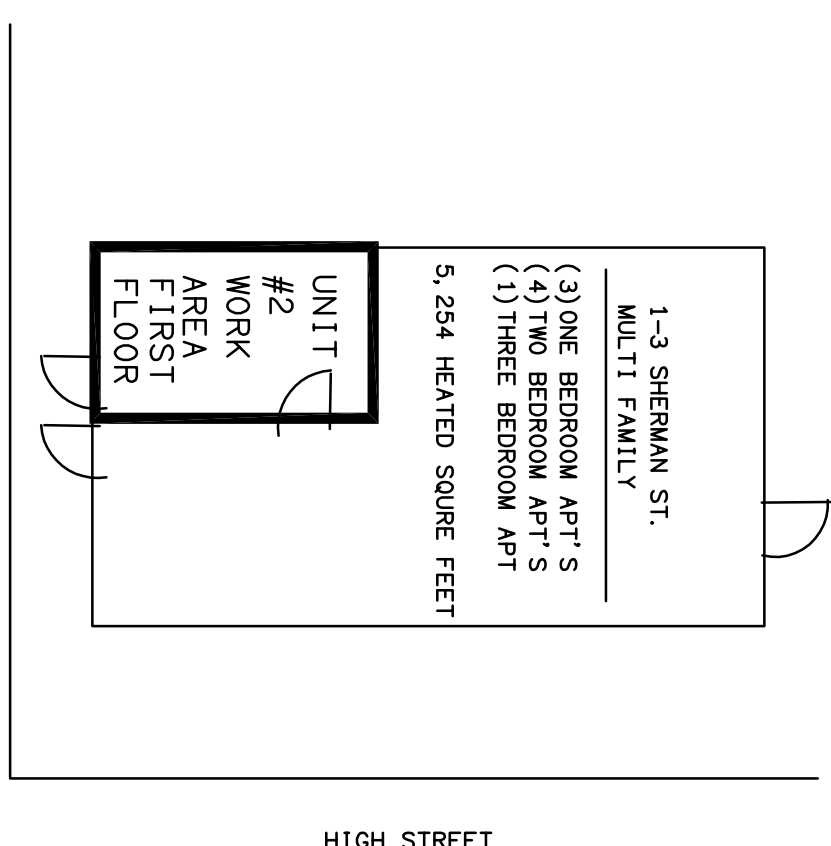
GENERAL NOTES:

1. PROVIDE NEW BATT INSULATION IN ALL EXTERIOR WALLS WHERE DR/WALL HAS BEEN REMOVED.
2. PROVIDE NEW RECEPTACLES WHERE INDICATED.
3. PROVIDE NEW SMOKE AND COMBO SMOKE/CO DETECTORS.
4. UPDATE CIRCUIT DIRECTORY IN BREAKER PANEL.
5. FOR CO2 SENSOR ON CEILING, PROVIDE TYPE X 5/8" FIRE RATED TYPE.

SYMBOLS

- 120V DUPLEX RECEPTACLE
- SPOT TYPE SMOKE DETECTOR MEETING CITY OF PORTLAND REQUIREMENTS, PHOTOELECTRIC TYPE, CO = COMBINATION SMOKE + CO DETECTOR

- LIGHT FIXTURE
- EXHAUST FAN
- WALL MOUNTED LIGHT
- VERIFY DEDICATED CIRCUIT OR PROVIDE NEW
- REMOVE AND REPLACE EXISTING SINK. LEAVE P-TRAP AND PIPING AS-IS.
- VERIFY DEDICATED CIRCUIT OR PROVIDE NEW
- NEW RANGE HOOD
- NEW RANGE STOVE
- NEW GAS LINE
- NEW TIE
- NEW



KEY PLAN

NO SCALE

REVISIONS
1. REVIEW COMMENT. CORRECT APARTMENT NUMBER. 12/23/17
2. REVIEW COMMENTS 1/2/18

**Fire Damage Remodel for,
1-3 Sherman Street, Apt#2
Portland, Maine 04104**

ALEX PIPER, P.E.
CONSULTING ENGINEER FL #42697
POWER • LIGHTING • SYSTEMS • DATA
VOICE: 407-578-8648
FAX: 866-357-8553
100 Wild Ferns Dr.
LONGWOOD, FL 32770 ALEX.PIPER.PE@GMAIL.COM

floor no.	approval AP	drawn by AP	scale AS NOTED
	project no. 1788	checked by AP	date 12/6/17
drawing no.	drawing title		
A-2	Corridor Floor Plans		