

PARTIAL BASEMENT PLAN

1/4" = 1'-0"

BXUV - Fire Resistance Ratings - ANSI/UL 263
BXUV7 - Fire Resistance Ratings - CAN/ULC-S101 Certified for Canada

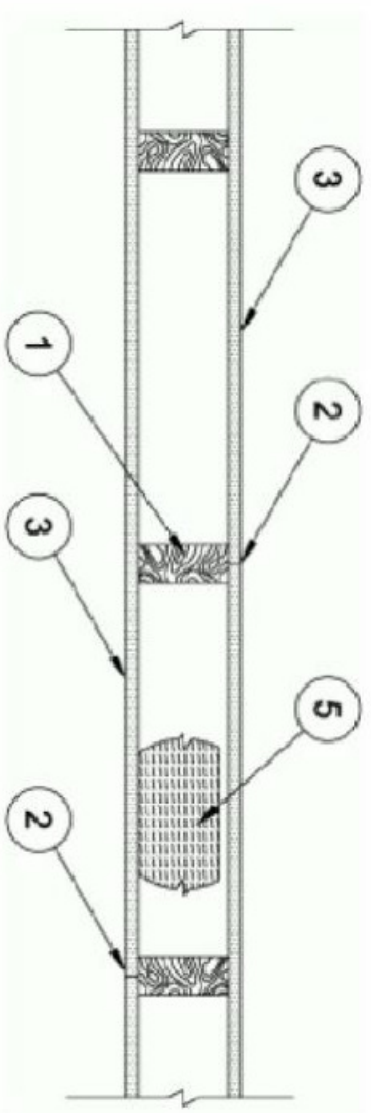
See General Information for Fire Resistance Ratings - ANSI/UL 263
 See General Information for Fire Resistance Ratings - CAN/ULC-S101 Certified for Canada

Design No. U305

October 23, 2017

Reaching Wall Rating - 1 Hr
 Finish Rating - See Items 3, 3A, 3B, 3C, 3F, 3G, 3H, 3J, 3K and 3L
 STC Rating - 96 (See Item 9)

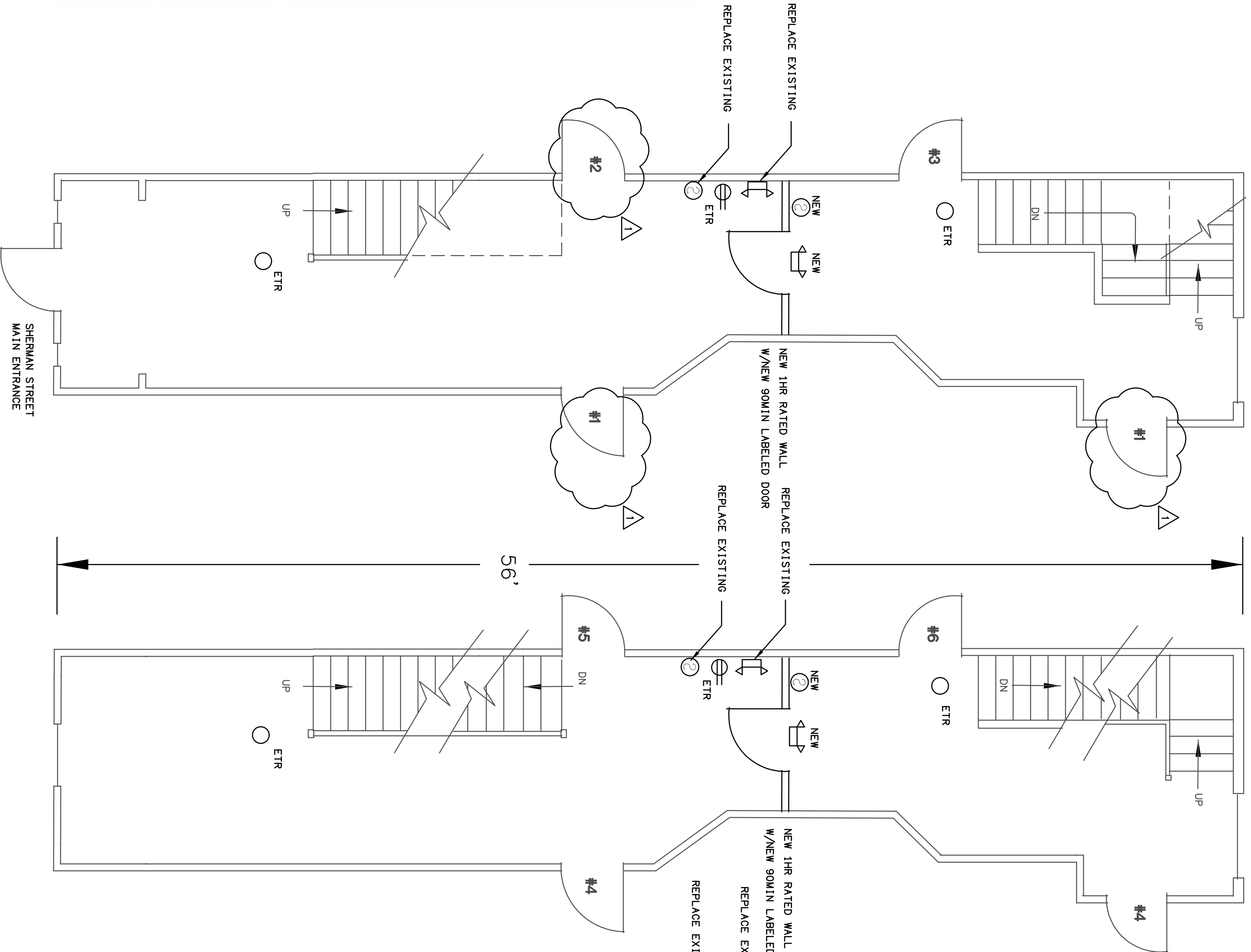
This design was developed using a load design method other than the Unit State Design Method (e.g. Working Stress Design Method). For jurisdictions employing the Unit State Design Method, see as Canada, a load restriction factor shall be used - See Table B302 or B302Z
 * Indicate such products shall bear the UL or CUL Certification Mark for jurisdictions employing the UL or CUL Certification (such as Canada), respectively.



1. **Wood Studs** - Nom 2 by 4 in, spaced 16 in OC max, effectively firestopped.
2. **Joints and Nail-Heads** - Joints covered with joint compound and paper tape. Joint compound and paper tape may be omitted on interior edge joints, or used. All nail protrusions, over 3/32 in. thick, must be removed. All nail heads must be countersunk and covered with joint compound.
3. **gypsum board** - 5/8 in. thick paper or vinyl surfaced, with beveled, square, or tapered edges, applied without gaps. For an alternate method of attachment of gypsum boards, refer to Items 6, 6A or 6B. **Steel Framing Members** -
4. **Steel Corner Fasteners** - (Optional) - For use at wall corners. Channel fastener, 2 in. high by 1 in. high on the exterior edge and 1 1/2 in. high by 1 in. high on the interior edge. The fastener shall be applied to the exterior edge of the gypsum board, no greater than 2 in. from the corner. The fastener shall be applied to the interior edge of the gypsum board, no greater than 2 in. from the corner. Corner of wall board shall be nailed to stud bottom plate using No. 16d common coated nail.
5. **Glue and Blanks** - (Optional) - Required when Item 6A is used (R-C-1) - Glass fiber or mineral wool insulation placed to completely or partially fill stud cavities. When Item 6A is used, glass fiber or mineral wool insulation shall be installed to completely fill the stud cavities.

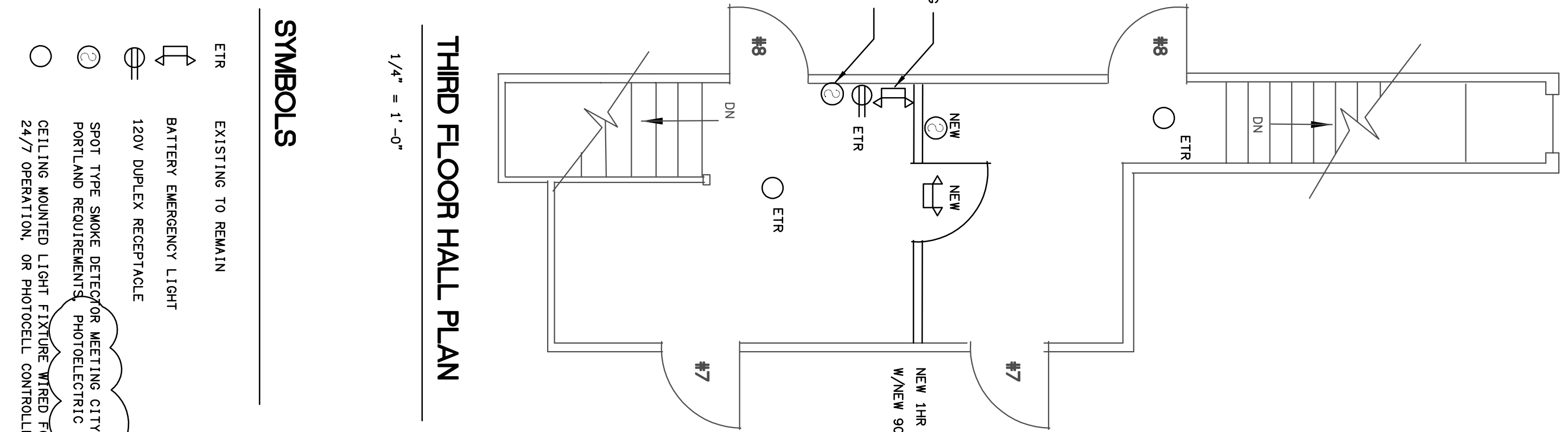
ONE-HOUR WALL DETAIL

NO SCALE



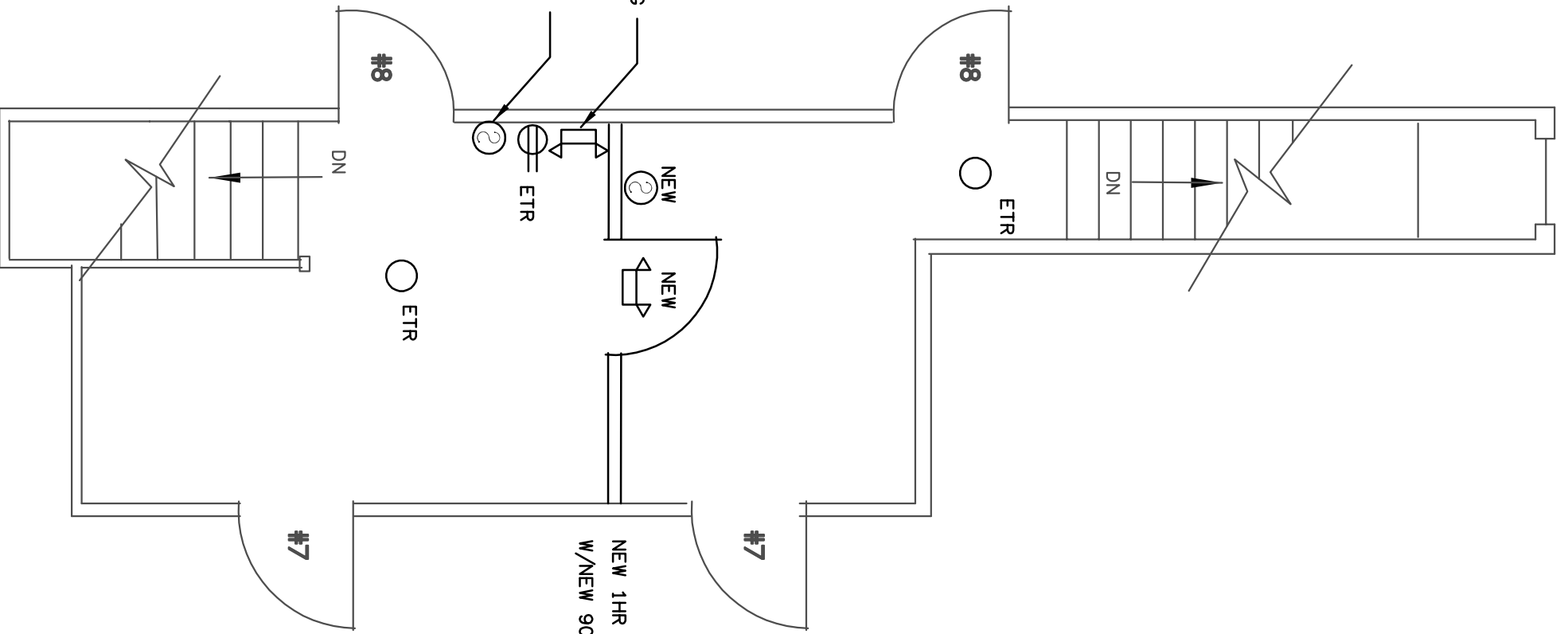
FIRST FLOOR HALL PLAN

1/4" = 1'-0"



SECOND FLOOR HALL PLAN

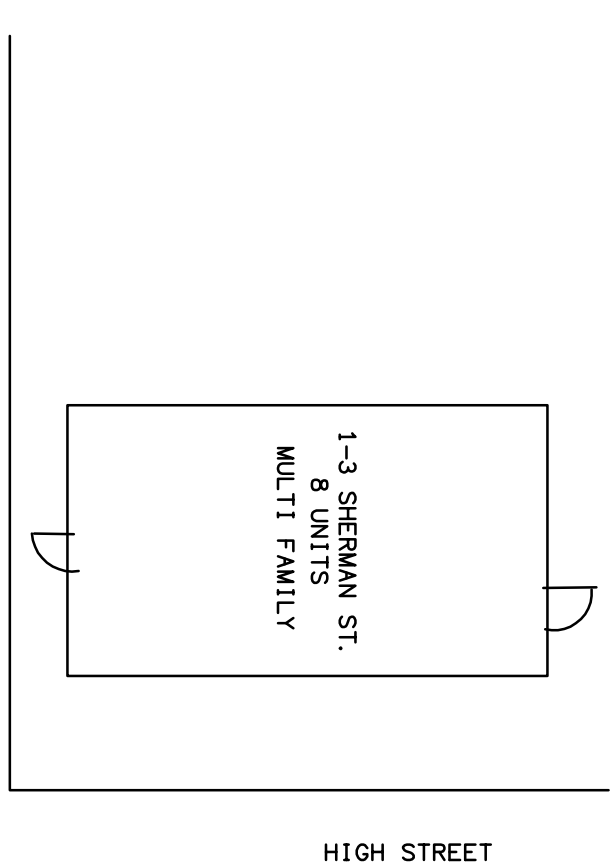
1/4" = 1'-0"



THIRD FLOOR HALL PLAN

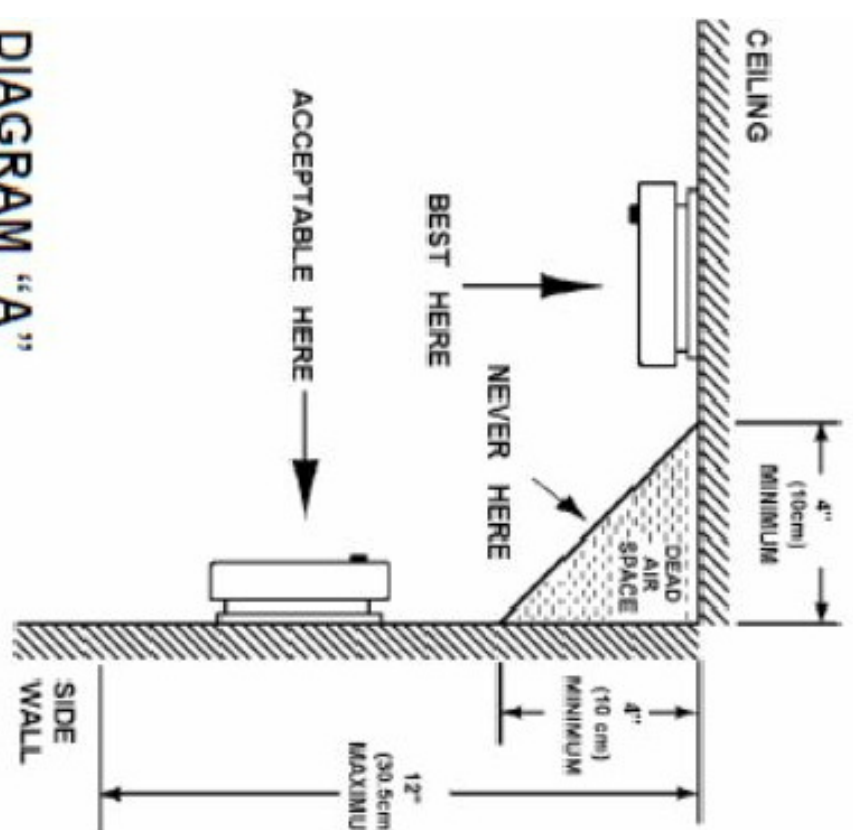
1/4" = 1'-0"

- SYMBOLS**
- ETR EXISTING TO REMAIN
 - BATTERY EMERGENCY LIGHT
 - 120V DUPLEX RECEPTACLE
 - SPOT TYPE SMOKE DETECTOR MEETING CITY OF PORTLAND REQUIREMENTS. PHOTOELECTRIC TYPE.
 - CEILING MOUNTED LIGHT FIXTURE WIRED FOR 24/7 OPERATION, OR PHOTOCELL CONTROLLED.
 - FIRE SPRINKLER HEAD.



KEY PLAN

NO SCALE



SMOKE DETECTOR LOCATION DETAIL

NO SCALE

GENERAL NOTES

1. PROVIDE NEW FIRE SEPARATIONS ON THREE FLOORS PER U. L. DESIGN NO. U305. PROVIDE 90-MINUTE RATED DOORS WITH SELF-CLOSING SPRING MECHANISMS.
2. PROVIDE NEW SMOKE DETECTORS WHERE INDICATED. SEE LOCATION DETAIL ON THIS SHEET. VERIFY T EXISTING DETECTORS MEET CITY REQUIREMENTS.
3. PROVIDE NEW BATTERY EMERGENCY LIGHTS WITH EXIT SIGNS. CONNECT TO THE ROOM LIGHTING CIRCUIT PER N.E.C. DO NOT CONNECT TO THE RECEPTACLE CIRCUIT. UNLESS IT IS THE SMOKE CIRCUIT.
4. PROVIDE NEW FIRE SPRINKLER HEADS IN LAUNDRY AREA AND EXISTING FIRE WATER PIPING IN ADJACENT BOILER AREA.

floor no.	approval	drawn by	scale
	AP	AP	AS NOTED
project no.	checked by	date	
1788	AP	12/6/17	
drawing no.	drawing title		
A-1	Corridor Floor Plans		

New Fire Exit Separation for,
1-3 Sherman Street
Portland, Maine 04104

revisions
REVIEW COMMENTS
1/5/18

ALEX PIPER, P.E.
 CONSULTING ENGINEER
 POWER • LIGHTING • SYSTEMS • DATA
 100 Wild Fern Dr.
 LONGWOOD, FL 32779
 FL #42697
 VOICE: 407-376-5648
 FAX: 407-376-5648
 ALEX.PIPER@PEMAIL.COM