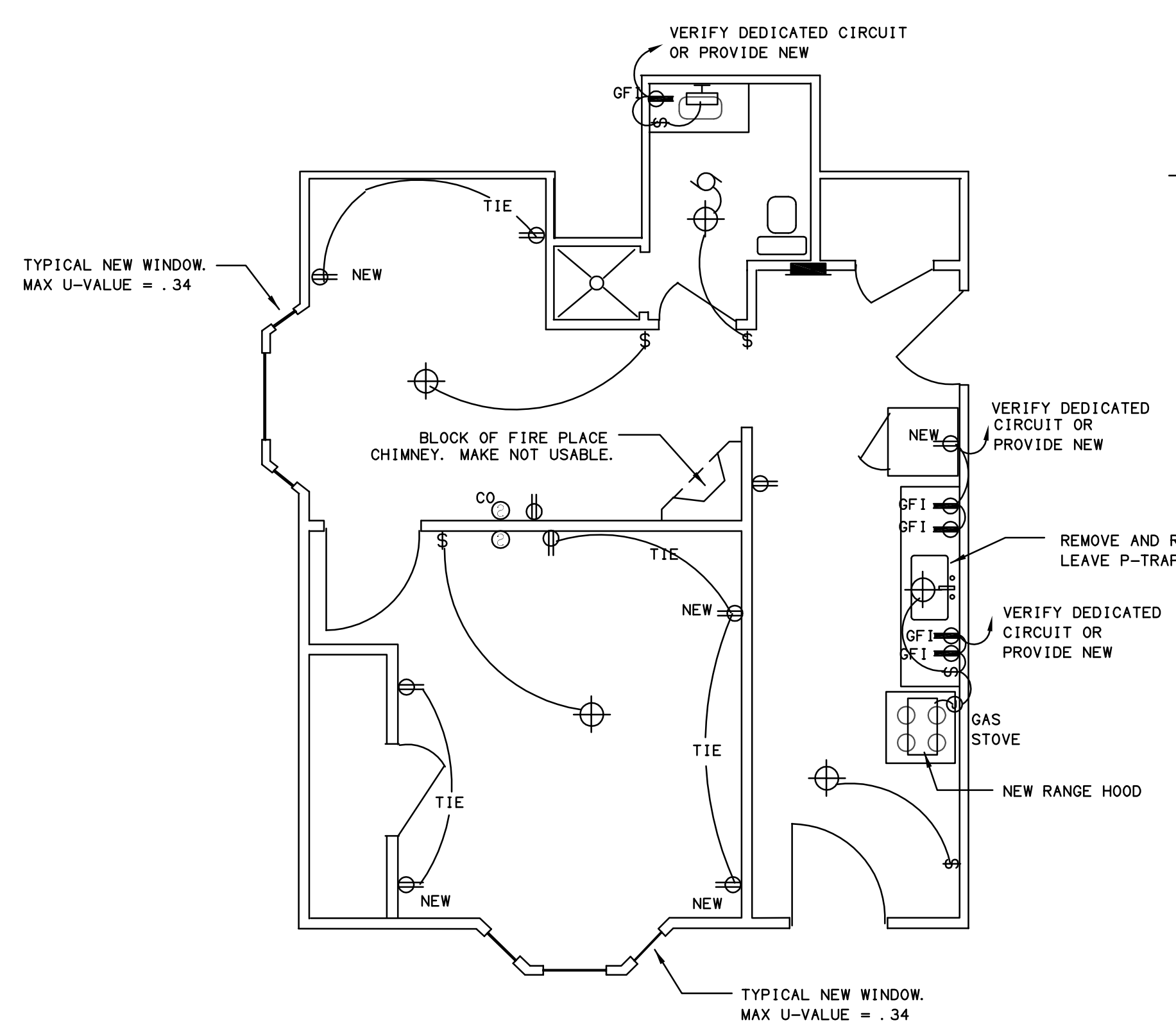


**EXISTING CONDITIONS AND DEMO PLAN**

1/4" = 1'-0"

**GENERAL DEMO NOTES:**

1. REMOVE AND REPLACE SMOKE DAMAGED DRYWALL WHERE REQUIRED.
2. REMOVE AND REPLACE KITCHEN CABINETS AND RANGE HOOD.
3. REMOVE AND REPLACE LIGHT FIXTURES.
4. REMOVE ELECTRICAL RECEPTACLES AND SWITCHES, REPLACE WITH NEW WHITE DEVICES.
5. REMOVE WIRING WHERE AFFECTED BY HEAT INSULATION DAMAGE. INCLUDE AT LEAST ENTIRE LIVING ROOM AREA.
6. REMOVE AND REPLACE ALL WINDOWS.
7. REMOVE AND REPLACE BATH VANITY CABINET, MIRROR, AND LIGHT. RE-USE SINK AND VALVE SETS IF POSSIBLE. IF NOT DAMAGED, P-TRAP IS TO REMAIN, AS-IS.
8. REPLACE BATH FAN/LIGHT COMBO FIXTURE.



**PROPOSED PLAN**

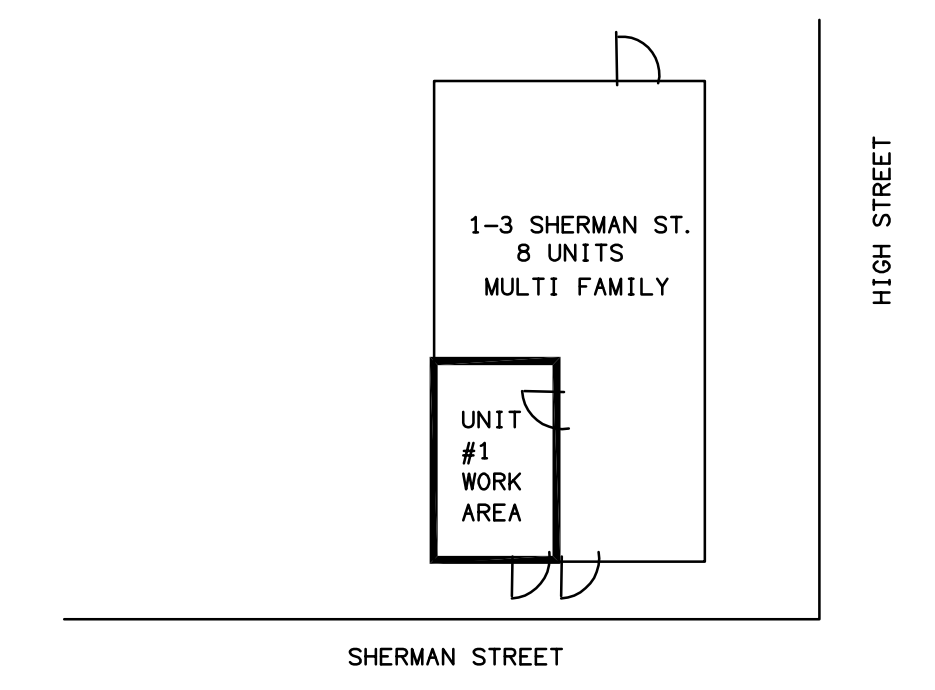
1/4" = 1'-0"

**GENERAL NOTES:**

1. PROVIDE NEW BATT INSULATION IN ALL EXTERIOR WALLS WHERE DRYWALL HAS BEEN REMOVED.
2. PROVIDE NEW RECEPTACLES WHERE INDICATED.
3. PROVIDE NEW SMOKE AND COMBO SMOKE/CO DETECTORS.
4. UPDATE CIRCUIT DIRECTORY IN BREAKER PANEL.

**SYMBOLS**

- 120V DUPLEX RECEPTACLE
- SPOT TYPE SMOKE DETECTOR MEETING CITY OF PORTLAND REQUIREMENTS.
- CO= COMBINATION SMOKE + CO DETECTOR
- LIGHT FIXTURE
- EXHAUST FAN
- WALL MOUNTED LIGHT



**KEY PLAN**

NO SCALE

revisions

**Fire Damage Remodel for,  
 1-3 Sherman Street, Apt#2  
 Portland, Maine 04104**

approval	AP	project no.	1789
drawn by	AP	checked by	AP
scale	AS NOTED	date	12/6/17

**Corridor Floor Plans**

floor no. A-2  
 drawing no. A-2