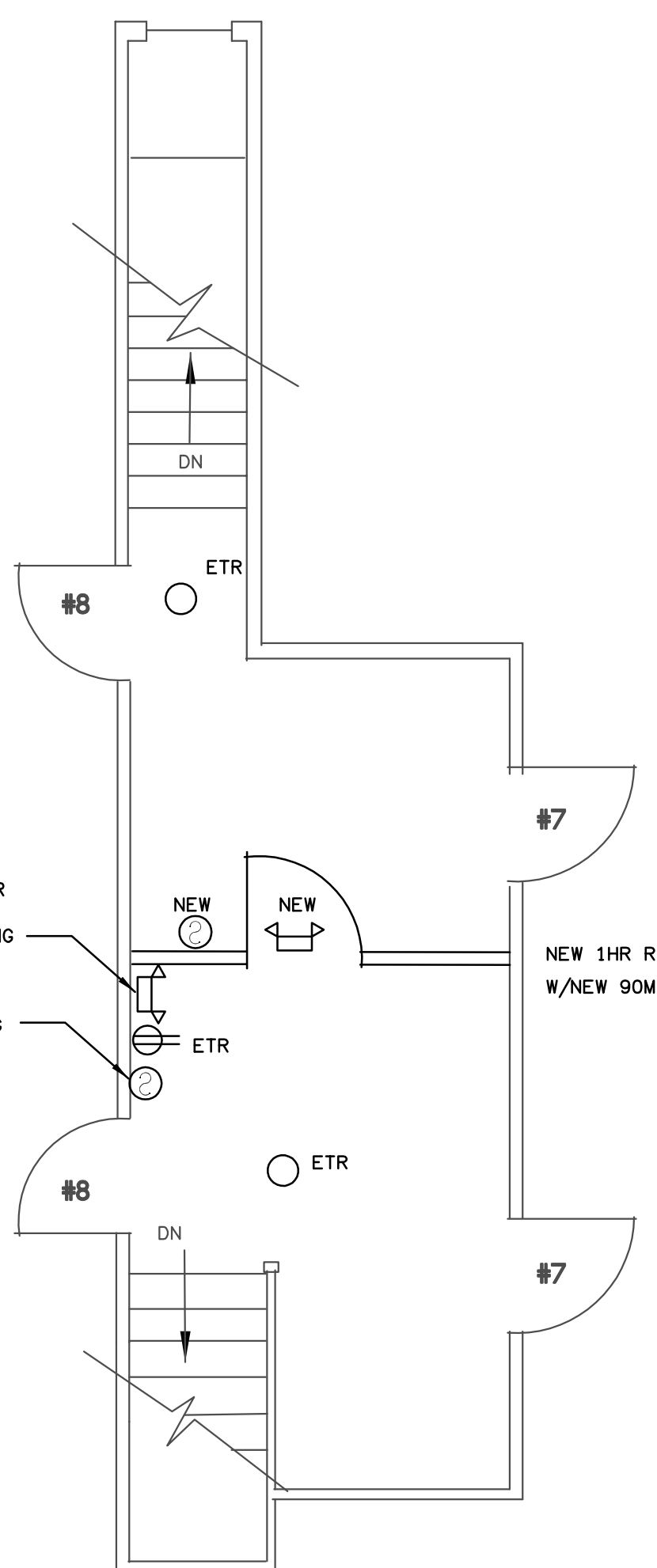
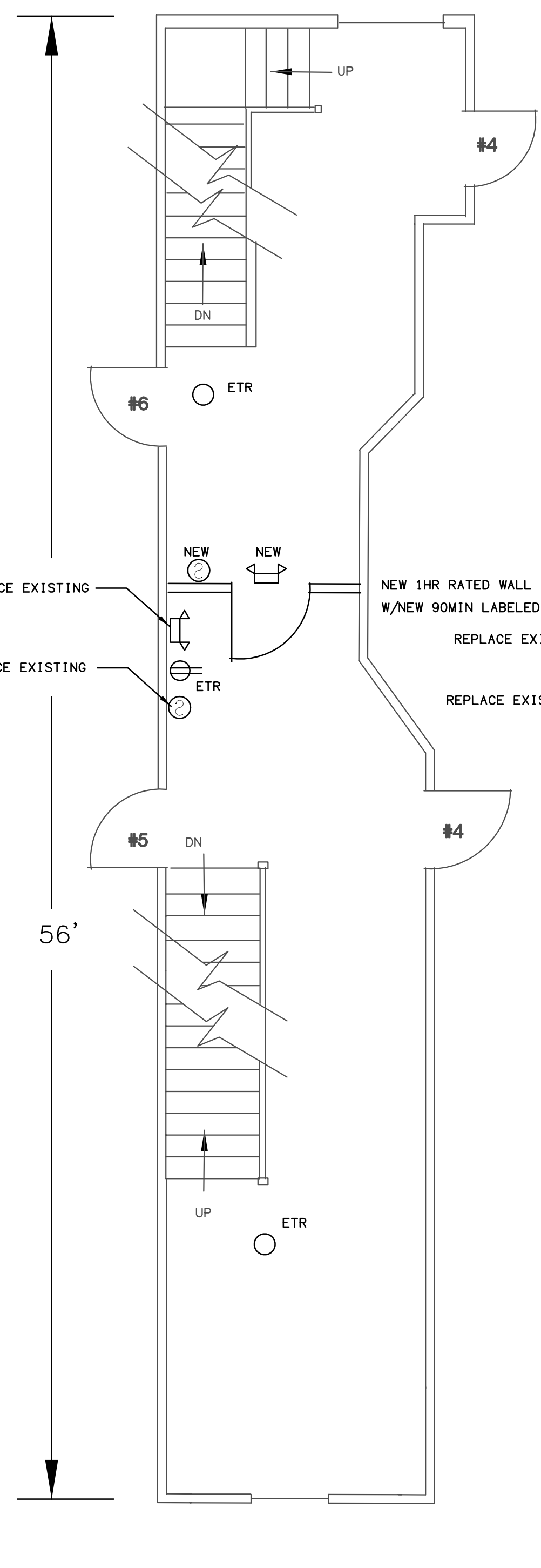
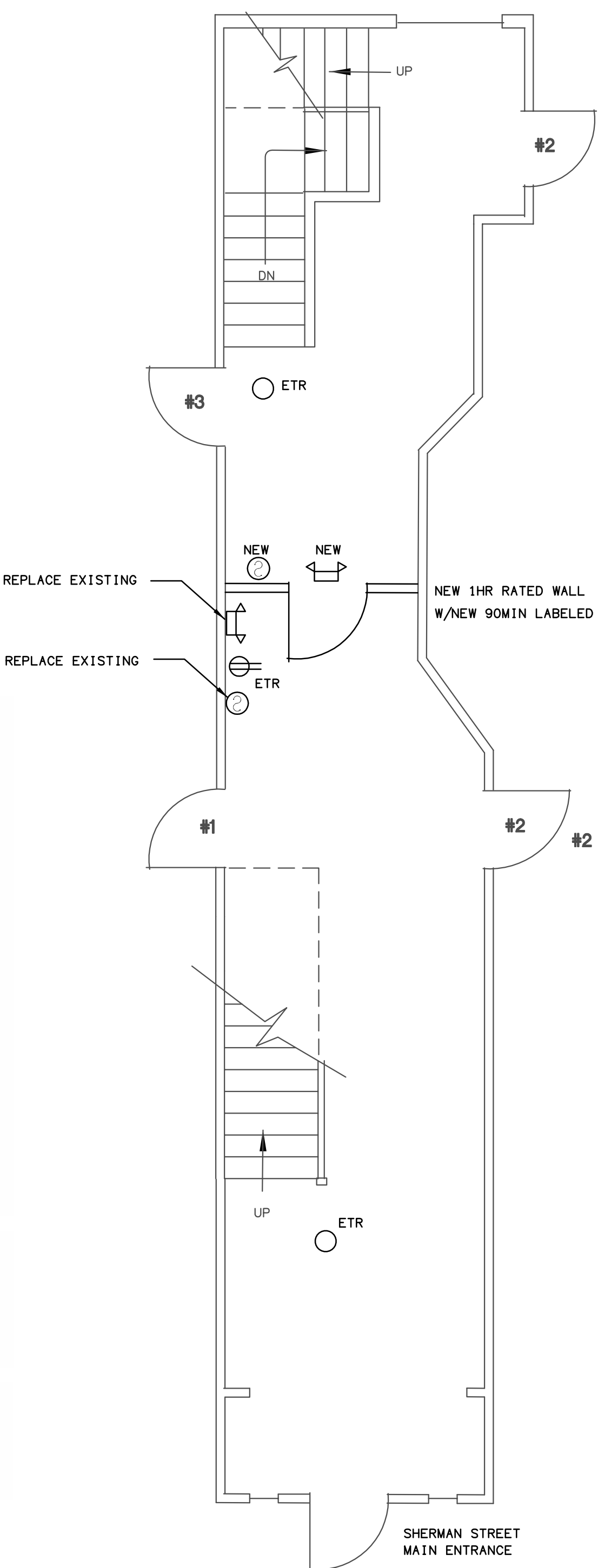
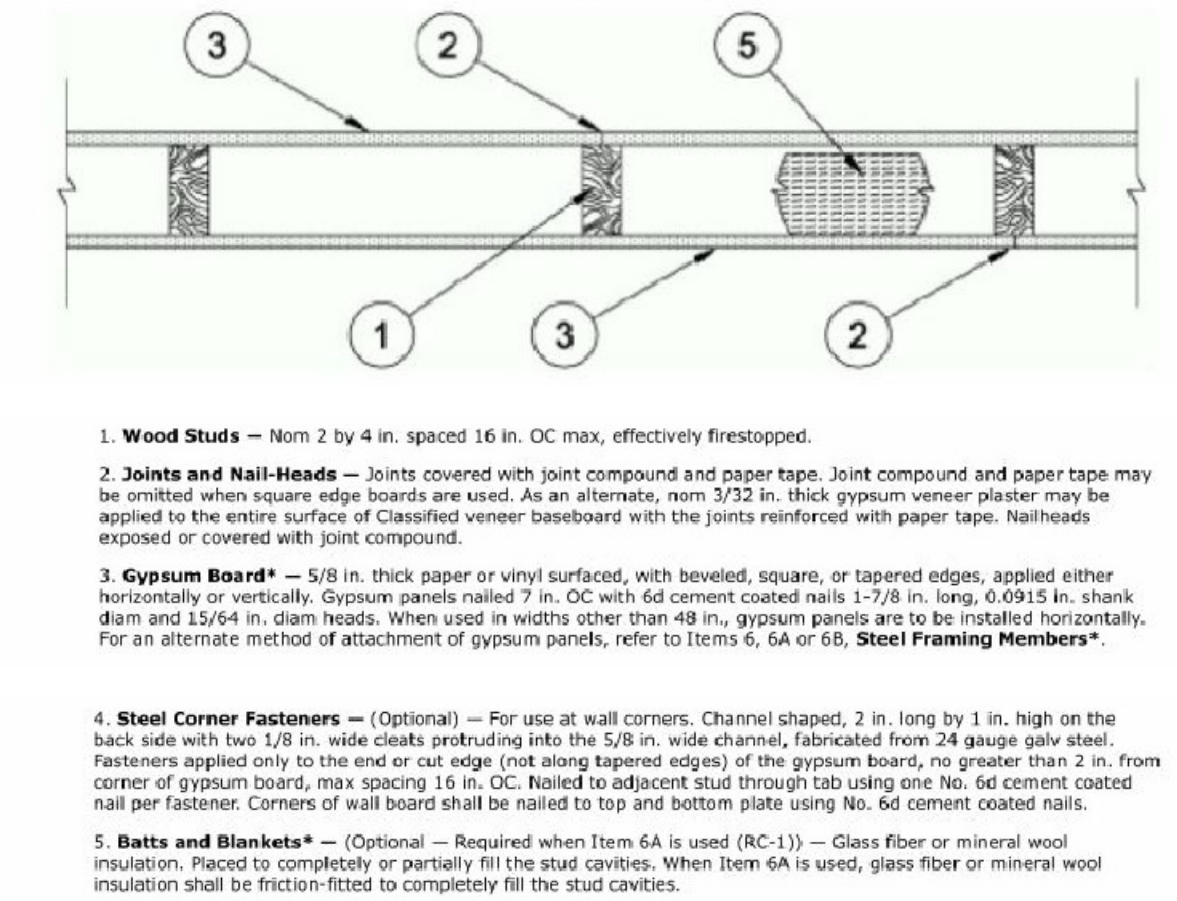


BXUV - Fire Resistance Ratings - ANSI/UL 263
BXUV7 - Fire Resistance Ratings - CAN/ULC-S101 Certified for Canada
 See General Information for Fire Resistance Ratings - ANSI/UL 263
 See General Information for Fire Resistance Ratings - CAN/ULC-S101 Certified for Canada

Design No. U305
 October 25, 2017
 Bearing Wall Rating - 1 Hr
 Finish Rating - See Items 3, 3A, 3D, 3E, 3F, 3G, 3H, 3J and 3L.
 STC Rating - 56 (See Item 9)

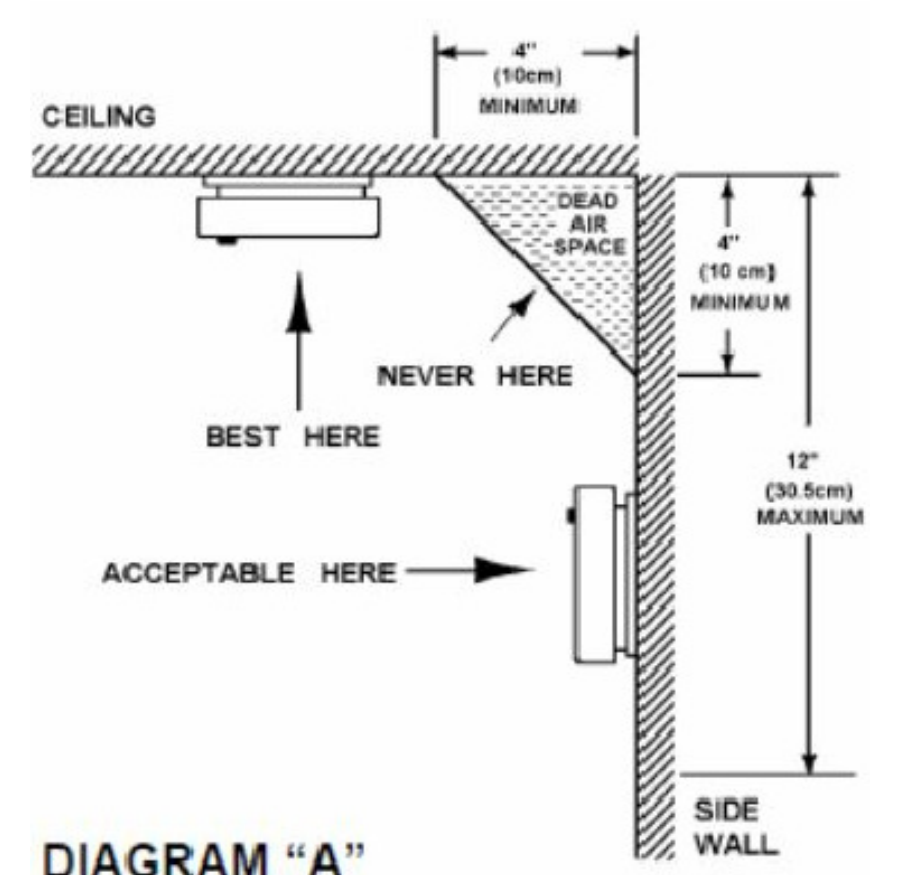
This design was evaluated using a load design method other than the Limit States Design Method (e.g., Working Stress Design Method). For jurisdictions employing the Limit States Design Method, such as Canada, a load restriction factor shall be used - See Guide BXUV or BXUV7.

* Indicates such products shall bear the UL or cUL Certification Mark for jurisdictions employing the UL or cUL Certification (such as Canada), respectively.

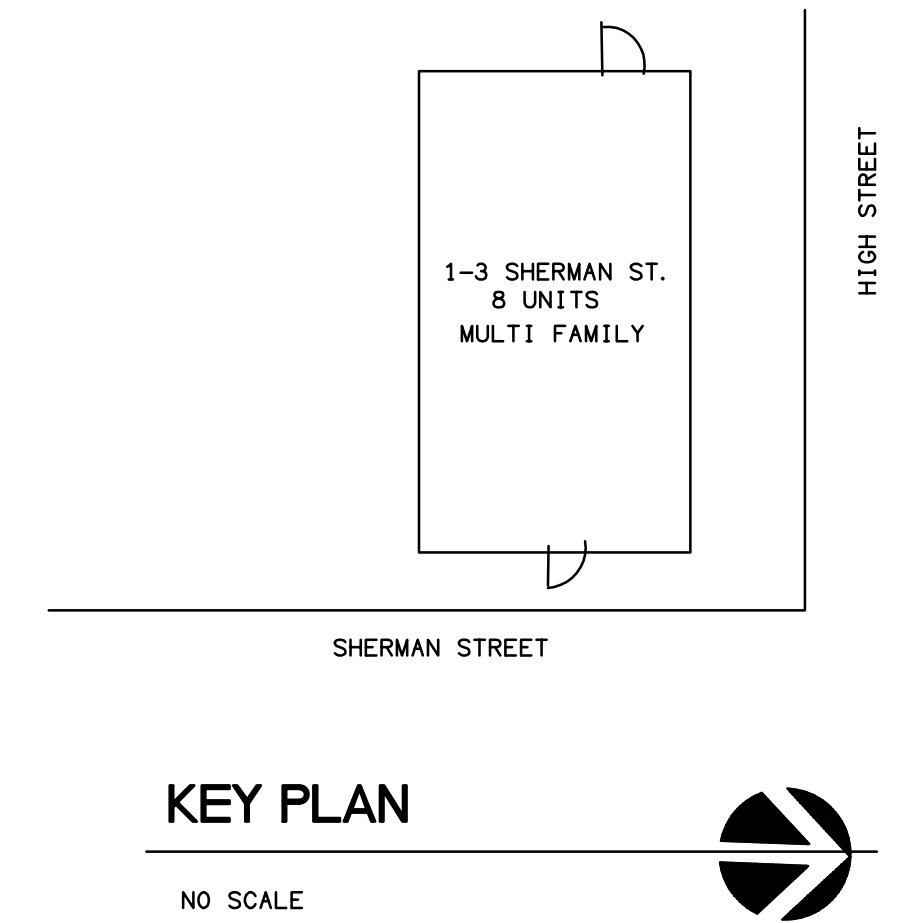


THIRD FLOOR HALL PLAN
 1/4" = 1'-0"

- SYMBOLS**
- ETR EXISTING TO REMAIN
 - BATTERY EMERGENCY LIGHT
 - 120V DUPLEX RECEPTACLE
 - SPOT TYPE SMOKE DETECTOR MEETING CITY OF PORTLAND REQUIREMENTS.
 - CEILING MOUNTED LIGHT FIXTURE WIRED FOR 24/7 OPERATION, OR PHOTOCELL CONTROLLED.
 - FIRE SPRINKLER HEAD.



- GENERAL NOTES**
- PROVIDE NEW FIRE SEPARATIONS ON THREE FLOORS PER U.L. DESIGN No. U305. PROVIDE 90-MINUTE RATED DOORS WITH SELF-CLOSING SPRING MECHANISMS.
 - PROVIDE NEW SMOKE DETECTORS WHERE INDICATED. SEE LOCATION DETAIL ON THIS SHEET. VERIFY EXISTING SMOKE DETECTORS MEET CITY REQUIREMENTS, OR REPLACE WITH NEW COMPLIANT DETECTORS.
 - PROVIDE NEW BATTERY EMERGENCY LIGHTS WITH EXIT SIGNS. CONNECT TO THE ROOM LIGHTING CIRCUIT PER N.E.C. DO NOT CONNECT TO THE RECEPTACLE CIRCUIT, UNLESS IT IS THE SAME CIRCUIT.
 - PROVIDE NEW FIRE SPRINKLER HEADS IN LAUNDRY AREA. CONNECT TO EXISTING FIRE WATER PIPING IN ADJACENT BOILER AREA.



NO.	REVISIONS

**New Fire Exit Separation for,
 1-3 Sherman Street
 Portland, Maine 04104**

floor no.	AP	scale	AS NOTED
drawing no.	1766	drawn by	AP
		checked by	AP
		date	12/16/17
		drawing title	Corridor Floor Plans
			A-1