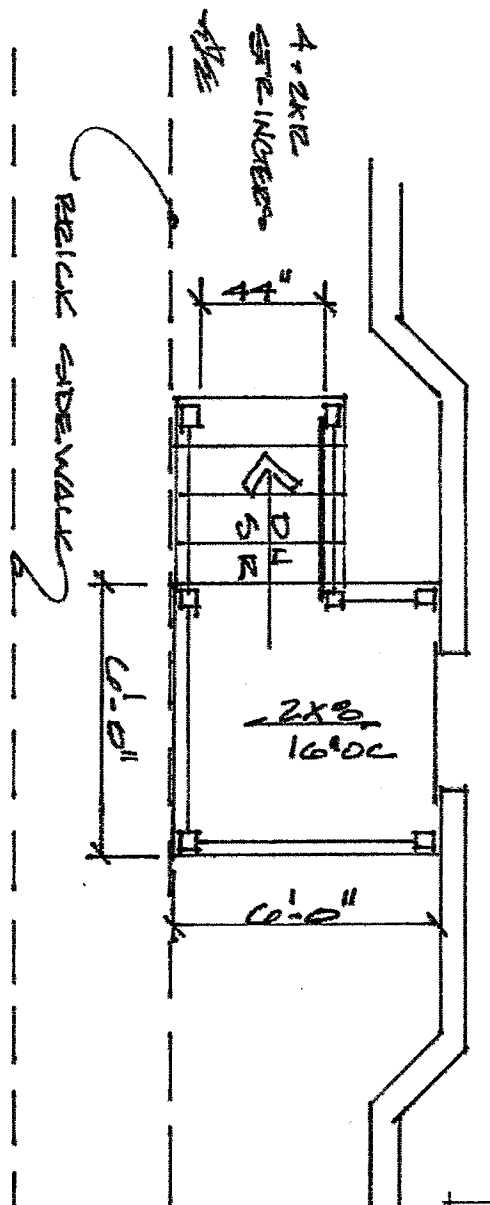
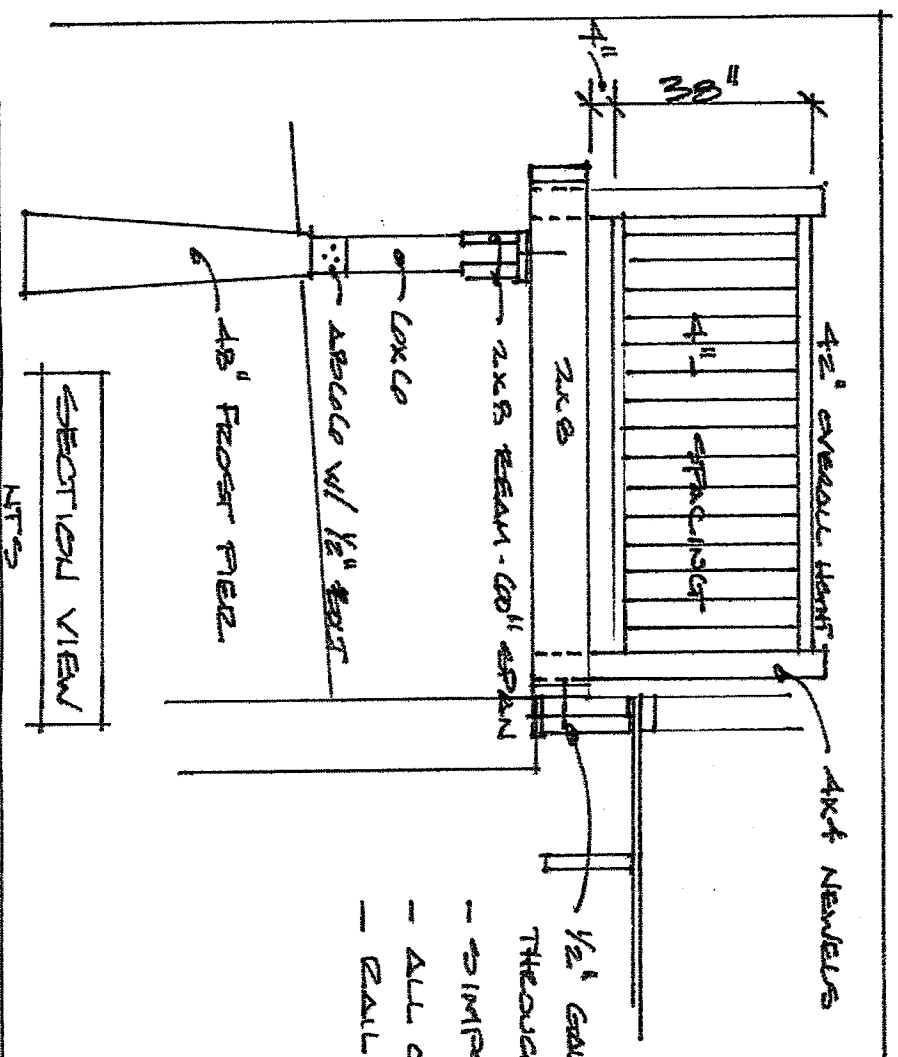


PLAN VIEW  
 NTS  
 DRAWN BY:  
 D. JOHNSON  
 7/22/19



- STAIRS - 4 - 2X12 STEELINGERS
- 7" RISE, 11" RUN
- HANDRAIL @ 34"
- GUARDS - 4x2" AFF -
- 4" SPACING OF
- RAILSTEPS



- 1/2" GALV. LAGS @ 24" OC, STAGGERED 2 ROWS THROUGH 2X8 LEADER.
- SIMPSON HANGERS JOIST TO LEADER.
- ALL CONSTRUCTION WHERE FT
- BUILDING MATERIAL KD

FEOUT STAIR REPLACEMENTS FOR  
 252 AND 230 HIGH STREET  
 PORTLAND, ME  
 OWNER: PFP ON HIGH LLC