

METHOD STATEMENT

- Using a twin-bladed, diamond-tipped wall chaser with vacuum attachment, cut slots into the horizontal required vertical spacing. Ensure that NO mortar is left attached to the exposed brick surfaces in order to provide a good masonry/grout bond.
- Remove All dust and mortar from the slots and thoroughly flush with water. Where the substrate is very porous or soiling with water is inappropriate, Mix Helibond cementitious grout using a power mixer and load into the Helix Filling Gun CS.
- Mix Helibond cementitious grout using a power mixer and load into the Helix Filling Gun CS.
- Fit the appropriate mortar nozzle.
- Inject a bead of Helibond grout, approx. 3/8" deep, into the back of the slot.
- Inject Helibond into the grout to obtain good coverage.
- Inject a second bead of Helibond grout over the exposed Helibar and run it into the slot using a finger trowel. Inject additional Helibond as necessary, leaving a 3/8" for new pointing.
- The crack within the wall should be weather-protected Helibond or Cradbond, depending on the width of the crack and the surface made good or left ready for any decoration.
- Clean tools with clean, fresh water.

M.B. Pointing may be carried out as soon as is convenient after the Helibond has set to gel.

RECOMMENDED TOOLING

- For cutting slots up to 1/8" deep: Twin-bladed cutter
- For mixing Helibond: 3-jaw-chuck drill with mixing paddle
- For injection of Helibond into slots: Helix Filling Gun CS with mortar nozzle
- For smoothing pointing: Standard finger trowel

Specification Notes

- The following criteria are to be read unless specified otherwise:
- Height of slot and masonry to be 1/8" to 1/4".
 - Height of slot to be equal to full mortar joint height, with a minimum of 1/2".
 - Helibar not to be applied to the face of the brick.
 - Helibar not to be applied to the face of the brick or 1/8" beyond the outer crests of two or more adjacent bricks are being grouted using one rod.
 - Where vertical spacing is 1/8" to 1/4" (6 brick courses), Helibar is to be applied to the face of the brick and the adjoining wall or bent back and fixed into the retil, sanding and DPC.
 - In hot conditions ensure the masonry is well wetted or primed to prevent premature curing of the Helibond due to rapid water evaporation. Usually a damp cloth should be used to maintain the Helibond moist.
 - Do not use Helibond when the air temperature is +32°F and falling or apply over ice. In all instances the slot must be thoroughly damp or primed prior to application of the Helibond grout.

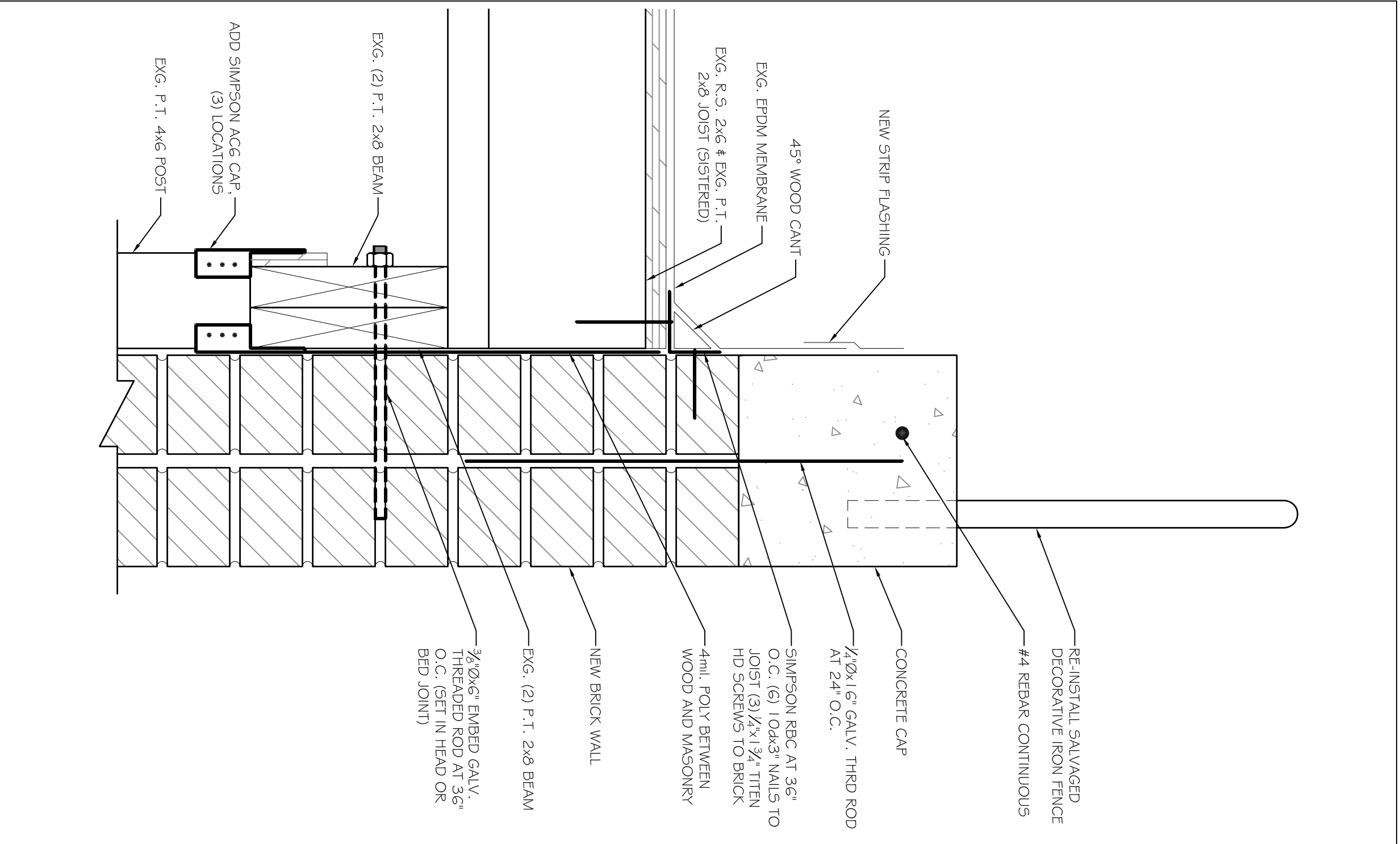
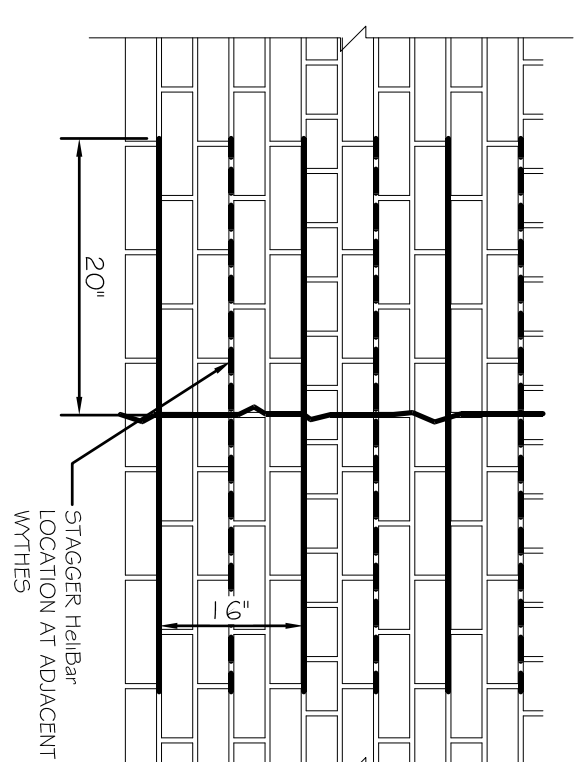
The above specification notes are for the general guidance only and Helita reserves the right to amend details/specs as necessary.

GENERAL NOTES

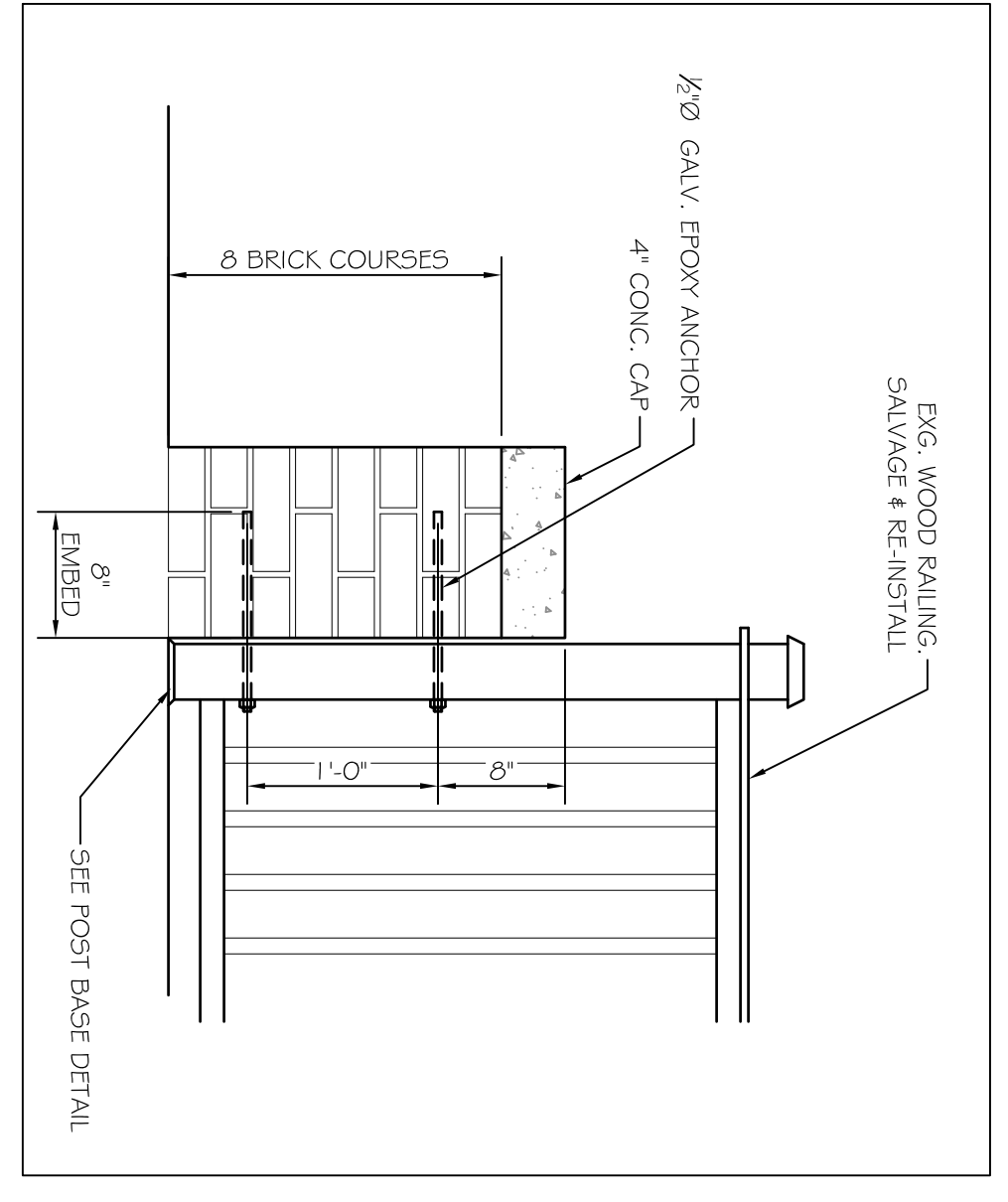
- If your application differs from the repair detail or you require specific advice on your particular project, call the Helix Technical Sales Team on 020 8735 5222. Our Technical Department can provide you with a full support service including:
- Advice, assistance and recommendations on all structural repair matters.
- Quoting and preparing complete repair proposals for specific situations.
- An insurance-backed warranty via our Approved Installers scheme.

C2 BRICK MASONRY CRACK REPAIR

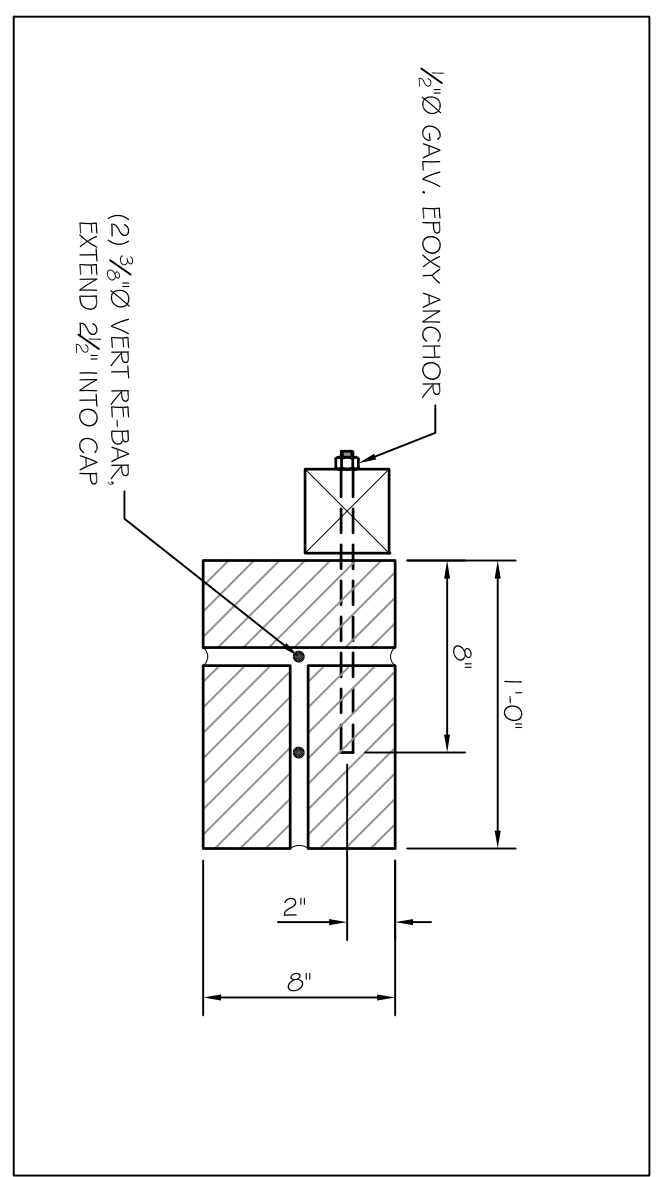
SCALE: NTS



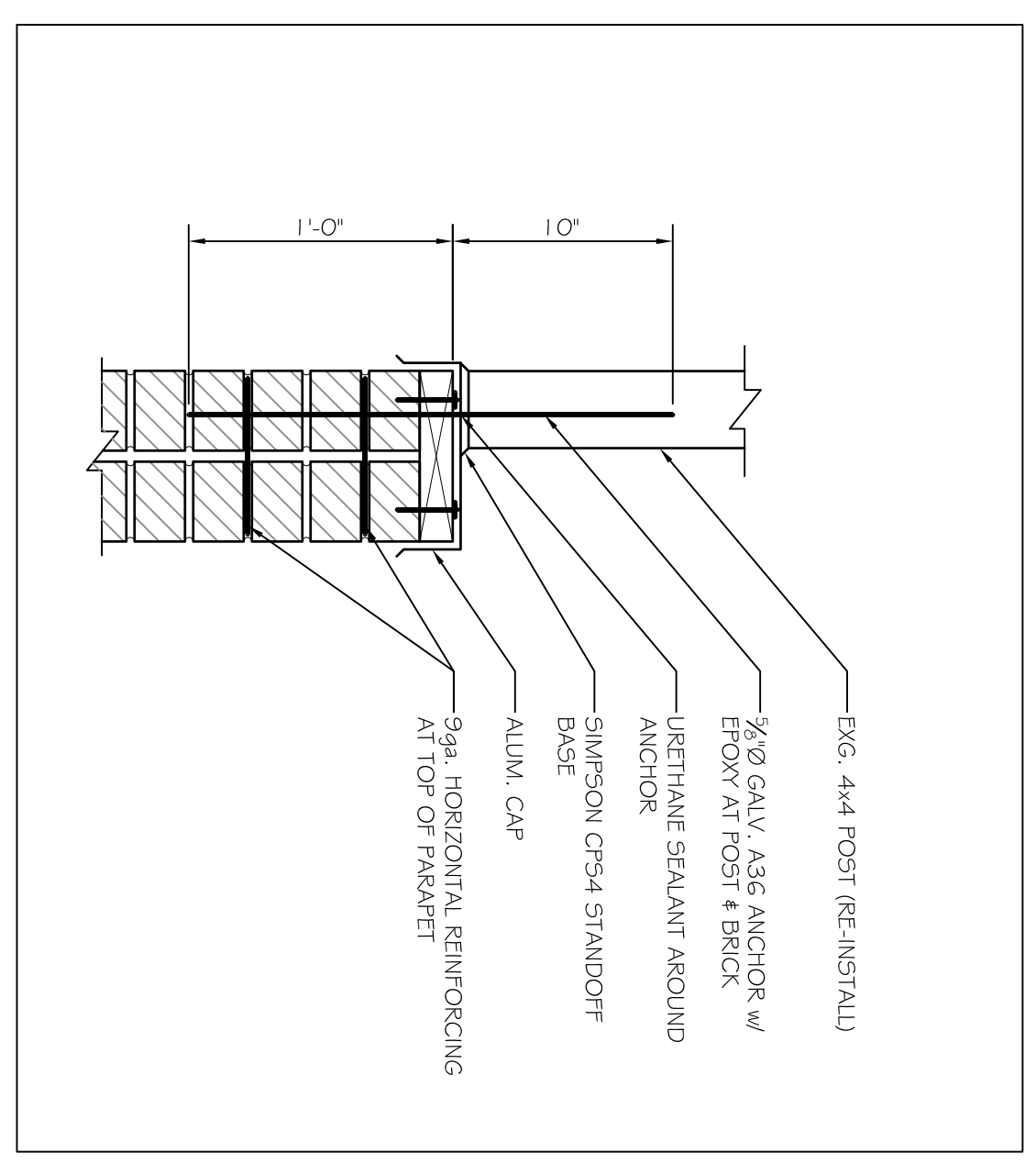
B4 REAR (NORTH) WALL DETAIL
SCALE: 3" = 1'-0"



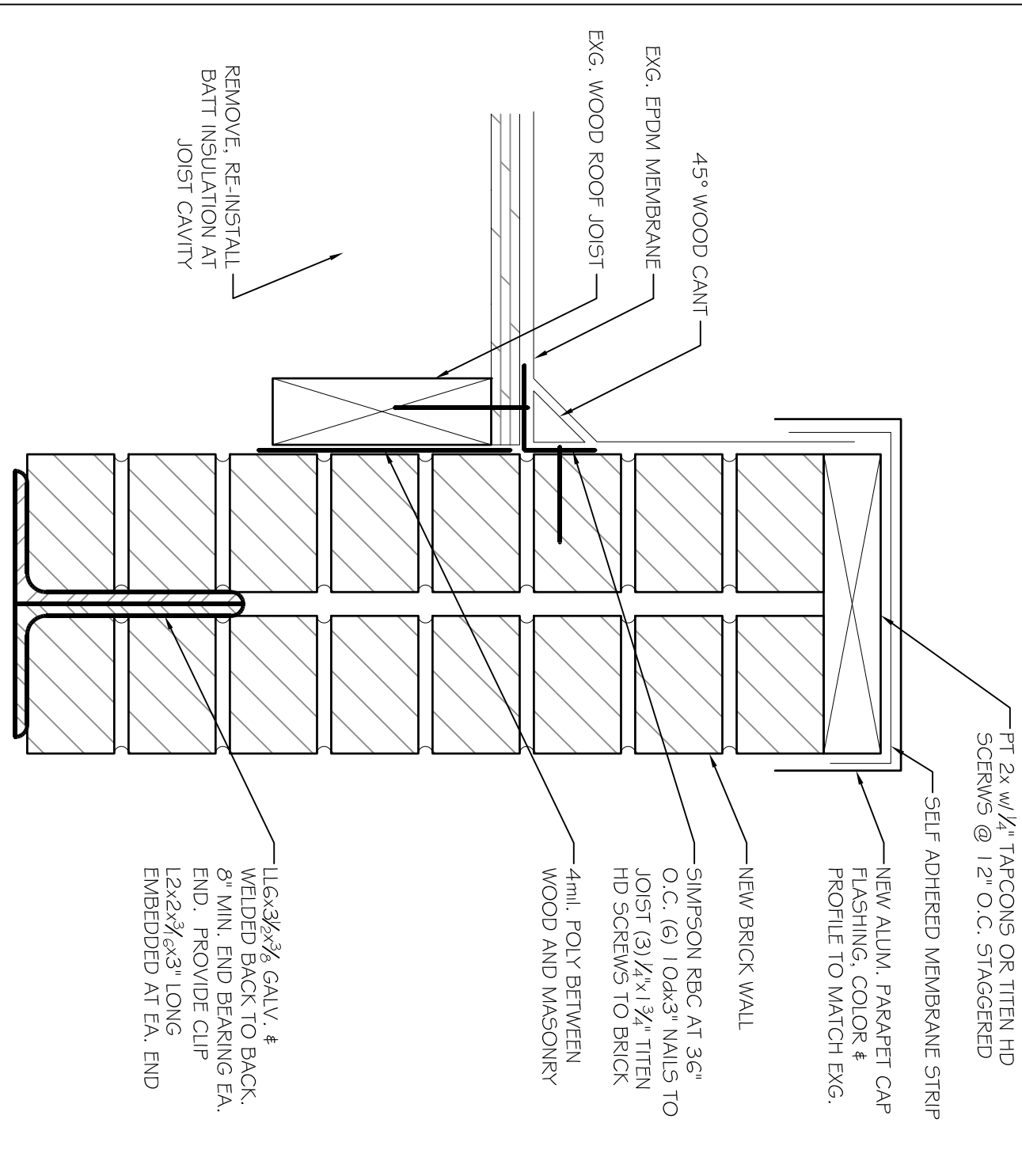
B3 BRICK PARAPET PIER DETAIL
SCALE: 1" = 1'-0"



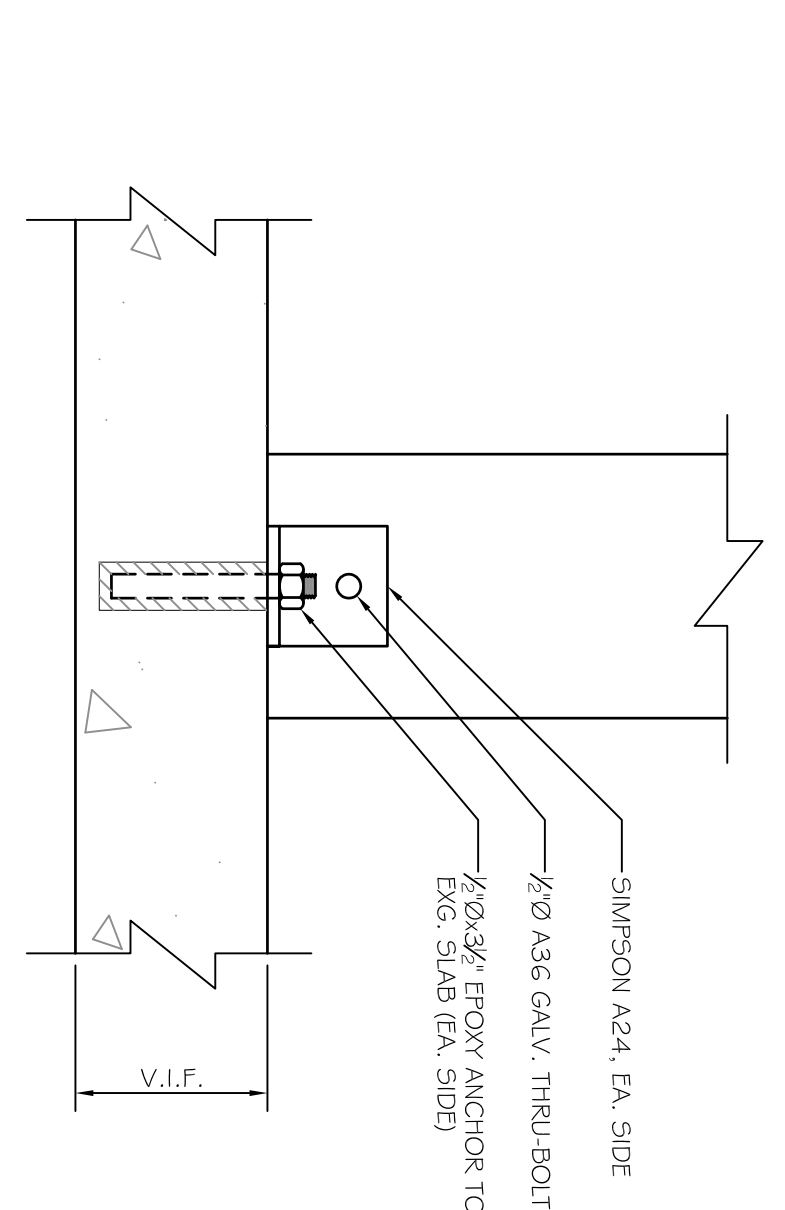
B2 BRICK PARAPET PIER PLAN
SCALE: 1/2" = 1'-0"



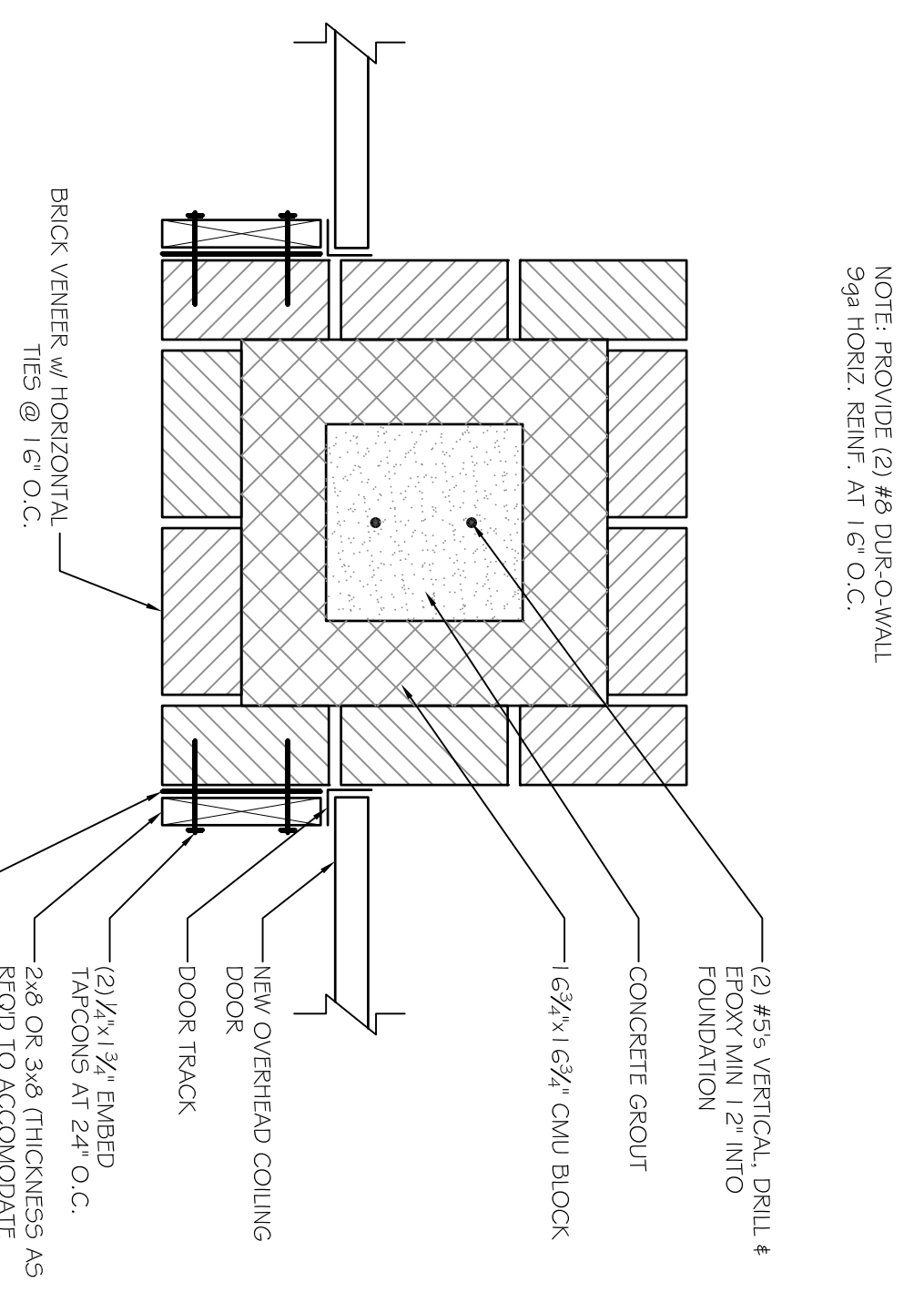
B1 HANDRAIL POST AT BRICK PARAPET DETAIL
SCALE: 1/2" = 1'-0"



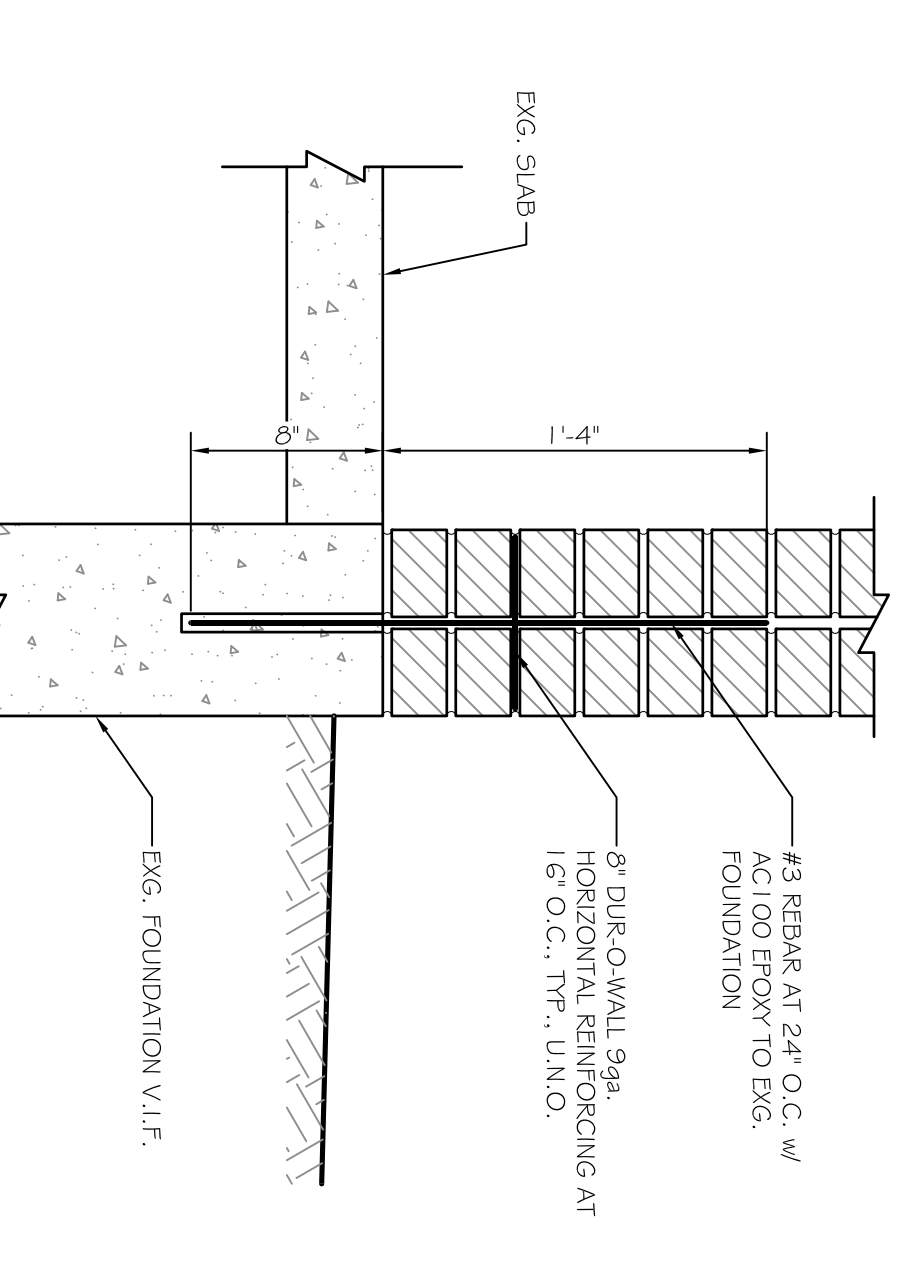
A4 PARAPET DETAIL AT FRONT (EAST) WALL
SCALE: 3" = 1'-0"



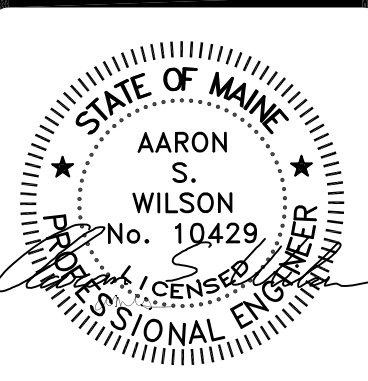
A3 EXG. POST AT EXG. SLAB
SCALE: 3" = 1'-0"



A2 MASONRY COLUMN DETAIL
SCALE: 1/2" = 1'-0"



A1 BRICK WALL BASE CONNECTION
SCALE: 1/2" = 1'-0"



ASSOCIATED DESIGN PARTNERS INC.
80 Leighton Road, Falmouth, Maine 04105
Office: (207) 878-1751
Fax: (207) 878-1788
E-Mail: adp@adpengineering.com

THIS DRAWING, SPECIFICATION AND ELECTRONIC FILE ARE THE PROPERTY OF ASSOCIATED DESIGN PARTNERS, INC. ANY REPRODUCTION OR OTHER USE OF THIS DOCUMENT WITHOUT WRITTEN CONSENT IS PROHIBITED.

PROJECT: **1 GRANT ST. PORTLAND, MAINE**
FOR:
SHEET TITLE: **REPAIR DETAILS ISSUED FOR PERMITTING**

NO.	BY	REVISIONS DESCRIPTION	DATE

DATE: 1-22-14
SCALE: AS NOTED
DESIGN BY: ASW
DRAWN BY: BSC
PROJECT NUMBER: **14001**
FILE #14001-A101.DWG
SHEET NO: **S2**