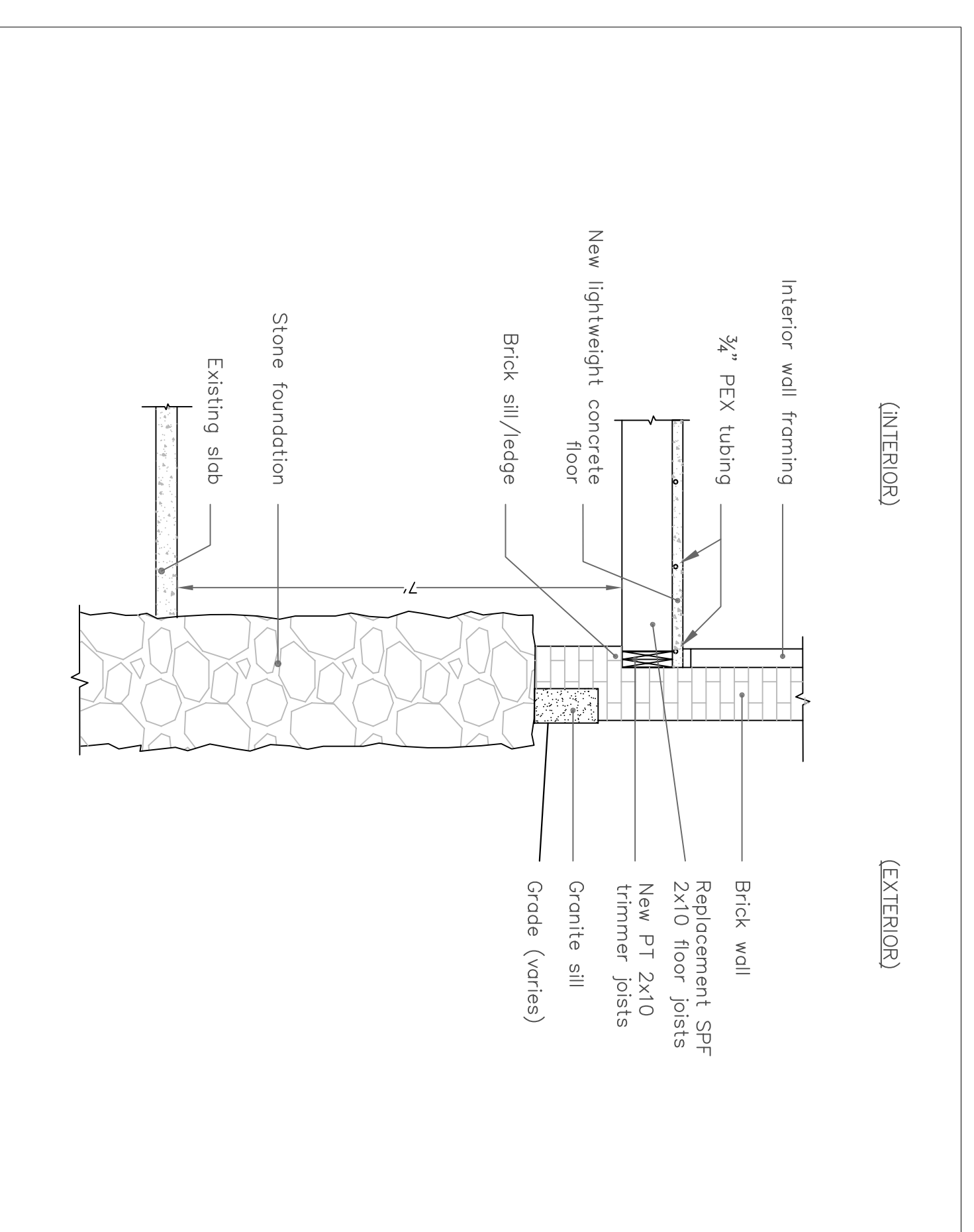
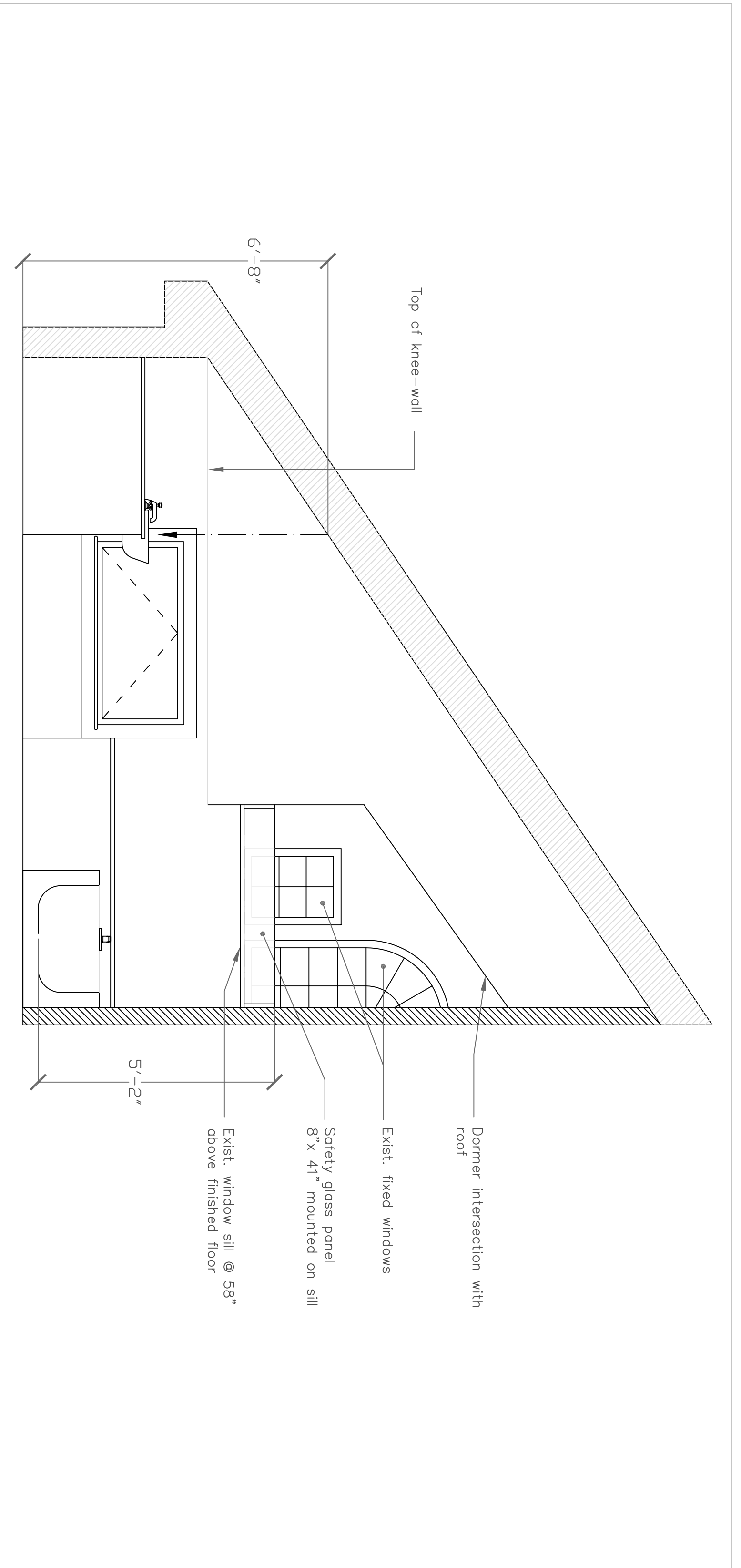
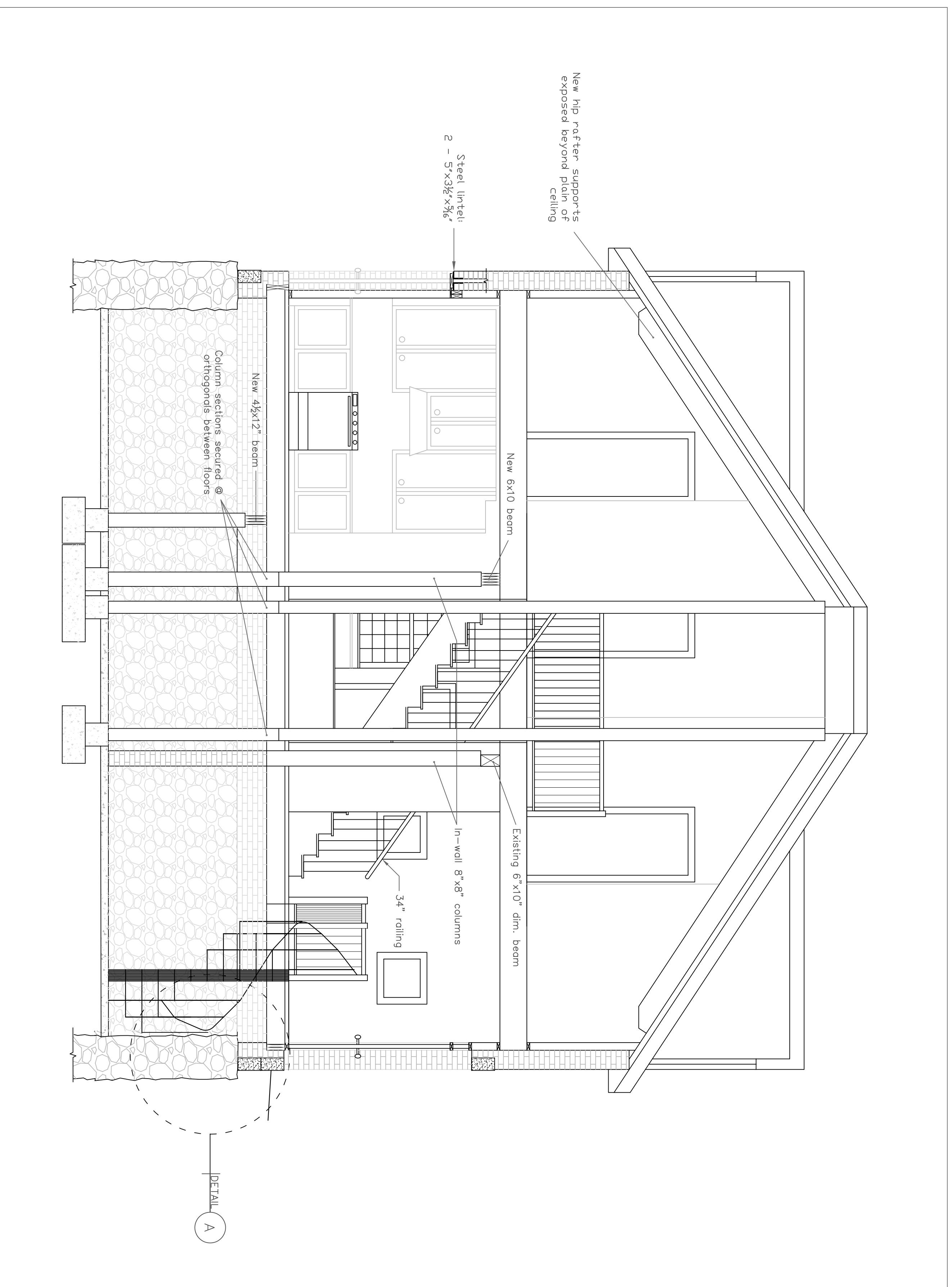
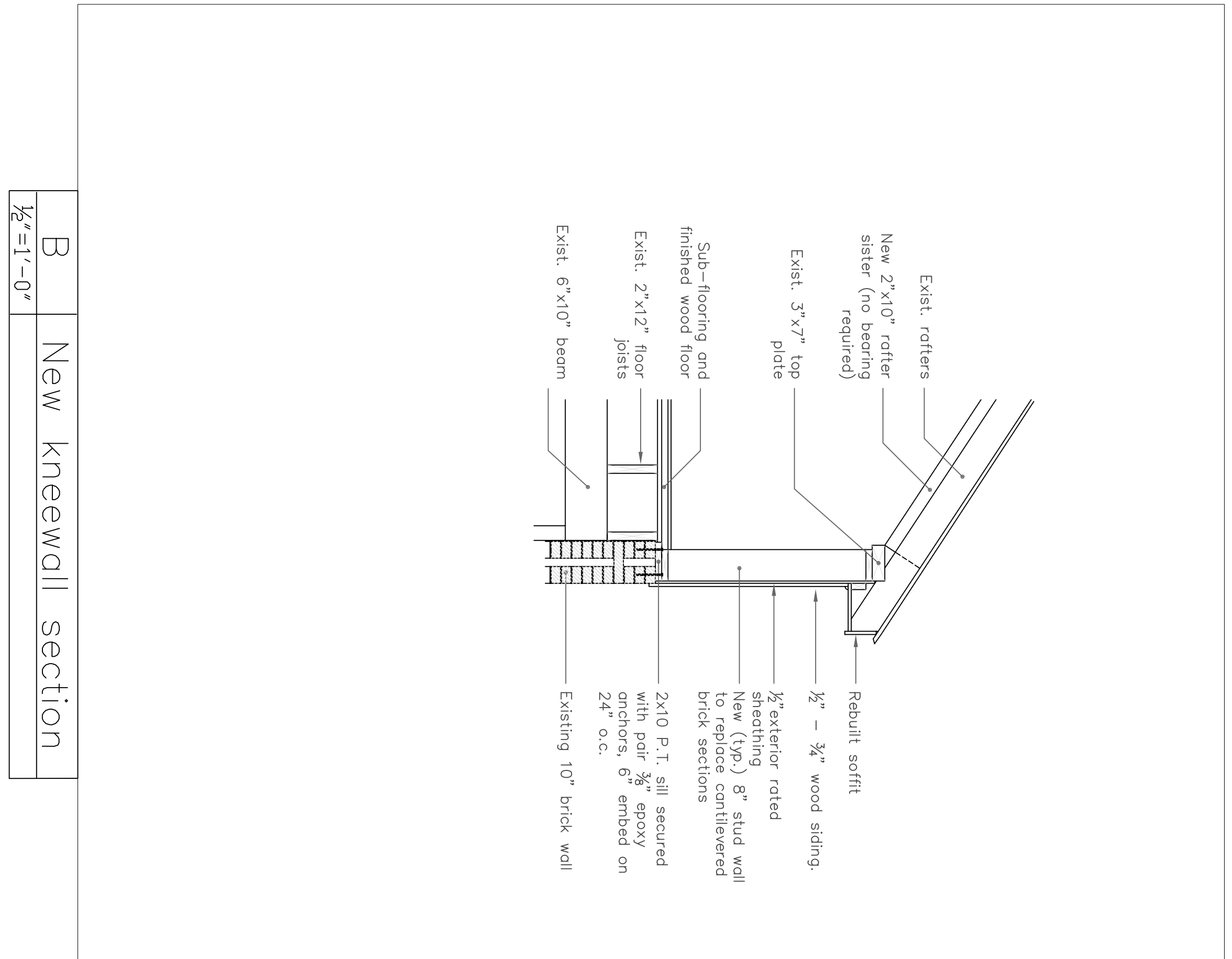


David Siegfried

44 Park Avenue Conversion

DESIGNER:
Janine Debanne

- NOTES:
- 1.) Steel lintel sized for $w=900$ lb/ft, $M=6100$ lb and $L=6'-8"$ with less than 1/500 deflection.
 - 2.) Refer to drawings S1-S4 for details of roof repair and structural information.



Title:
Sections and
Details
Date:
2-Feb 2005
Drawing no.
A 1.4