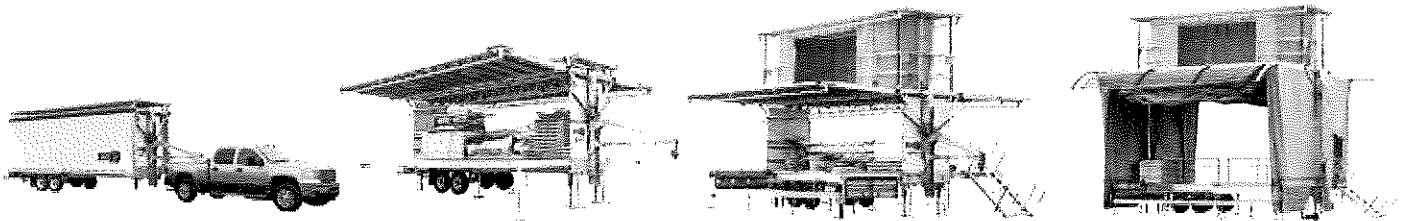




STAGELINE SL 100 OPTION - MIX POSITION / FOH



This is a technician's FOH dream. Two Stageline equipment in one - when not being used as a stage, it is transformed into a mixing position.

For sound, light, mix, delay towers, broadcasting & event coverage, indoor or out. A spacious multi-level and weather protected FOH unit ready in 1 ½ hours.

STANDARD EQUIPMENT

- Central roof made of FRP bonded to 2" (50 mm) aluminium tubing
- Guardrails on central roof
- Technician ladder to access central roof
- Low and adjustable floor: 22' x 6'-10" (6.7 m x 2.1 m)
- Removable staircase

OPTIONAL

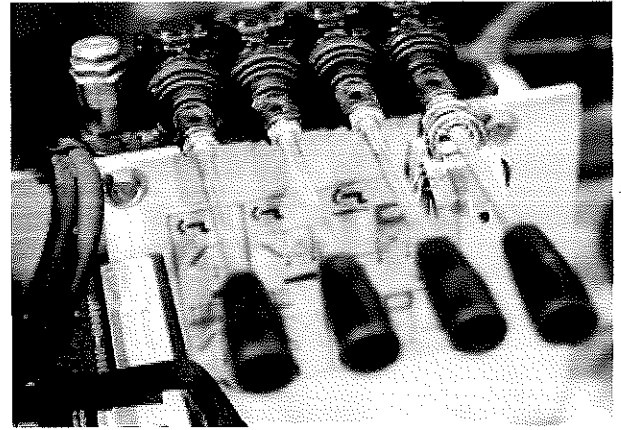
- Tailored windwalls, mesh or PVC / fire retardant & retractable
- Covered upper level
- Scrim windows
- Shade canopy with hardware 6' (1.8m)
- Additional worklights (2): 500 w each
- Crowd blinder support: 2" (50 mm) aluminium tubing
- Lower deck extension kit: 96 ft² (8.9 m²)

“ THE SL100 MIX IS A VERY VALUABLE ASSET IN ANY FESTIVAL APPLICATION. WITH IT'S 18" HIGH AUDIO DECK AND REAR LEVEL AT ABOUT 2' HIGHER, LX, VIDEO OR SFX OPERATORS ALL HAVE A CLEAR VIEW. THE COVERED ROOF DECK IS GREAT FOR 4 FOLLOWSPOTS AND THE AUDIO DELAY POINTS USL & USR ARE AN ADDED BONUS. ”

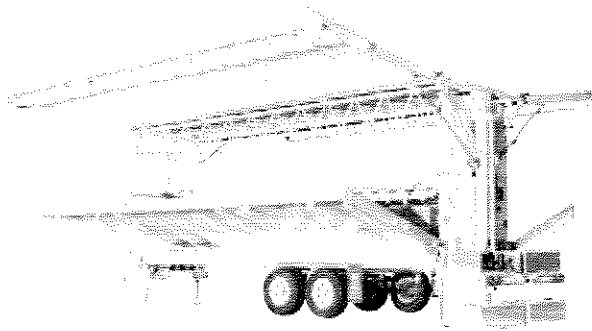
Scott Pollard
Palmer Audio Inc.

STAGELINE

**A STAGE ABOVE ANY OTHER CATEGORY
WITH A FULLY HYRAULIC SET UP**



1



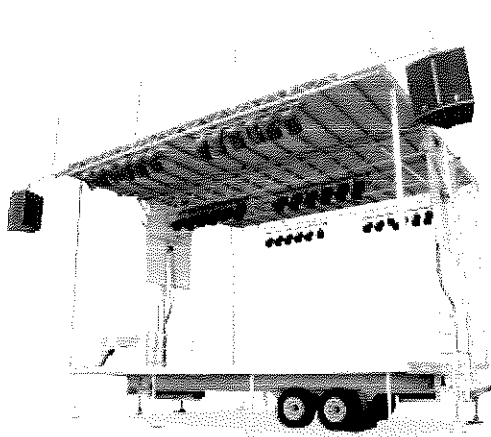
Level the unit & hydraulically position the deck and roof panels.

2



Hang sound, lighting, banners and sets at ground and deck level.

3



Suspend loads of up to 3,800 lbs (1,725 kg) from the roof before raising it.

FLOOR	SET-UP	WIND RESISTANCE	RIGGING
24' X 20' (7 M X 6 M)	X2 OH30	80 MPH (129 KM/H)	6,500 LB (2,948 KG)

FAST & EASY

* Stageline promotes safe working habits by having a minimum of two workers on every job site.

SAFETY AND RELIABILITY UNDER ALL SKIES, IN ALL CONDITIONS

The SL100 is specifically designed and engineered to be safely transported, safely deployed and safely used outdoors. Designed to make production logistics easy, it sets up rapidly as all the work is done at deck and ground level reducing the risk for potential human error and accidents.

MOTHER NATURE WILL NOT STEAL THE SHOW

The SL100 is a tough machine that withstands today's changing climatic conditions.

The SL100 offers superior protection through the use of the highest standards and the most innovative built in features. It demonstrates unique capacities to resist high winds, to protect gear, talent and crew even under the most demanding outdoor situations.

SUPERIOR DESIGN FOR LOADS & RIGGING

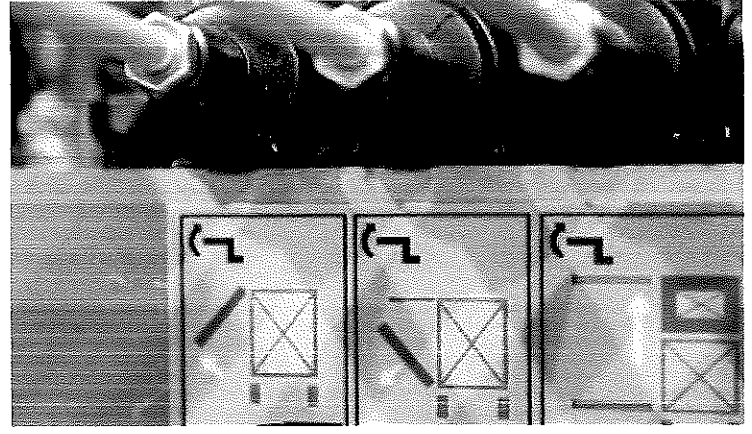
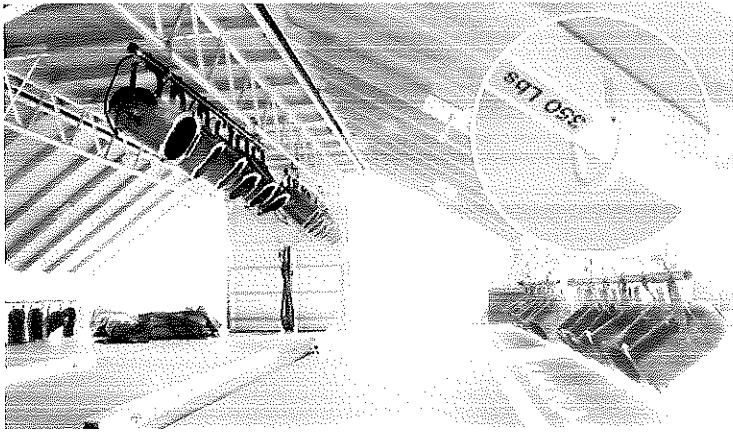
The SL100 is built and tested with the highest load and rigging design criteria in the industry – up to 2 times the permitted load.

Engineering calculations are based on the IBC (International Building Codes) and NBC (Canadian Building Codes).

HIGHEST WIND RESISTANCE IN THE INDUSTRY

80 mph (129 km/h) without wind walls and 60 mph (97 km/h) with wind walls.





RIGGING SHOW SUPPORT EQUIPMENT MADE EASY AT GROUND AND DECK LEVEL

Industry standard rigging points, trusses and beams facilitate the installation of equipment. Cuts down on climbing and set up time.



CUSTOMIZED HYDRAULICS WITH BACK UP

Calibrated power from precision designed cylinders and components yield a perfect flow with safe, well-timed speed of operation. Comes with safety valves that block the liquid flow and undue movements when needed. Easy and safe throughout with minimum effort and operation. Very low maintenance.



FIBER LOCK PANELS

In closed position the roof panels of the stage become the side panels of a hard shell trailer. Fiber Lock is a process where fiberglass is wrapped around the aluminum frame. This method has multiple functions to address esthetics and durability. Both structural and weather protective, this layering process compensates for movement and structural deflection of the panels when they are hydraulically deployed. The process eliminates damage from road vibrations and extreme weather conditions. The fiberglass panels never need replacement and they remain safe and great looking year in and year out.

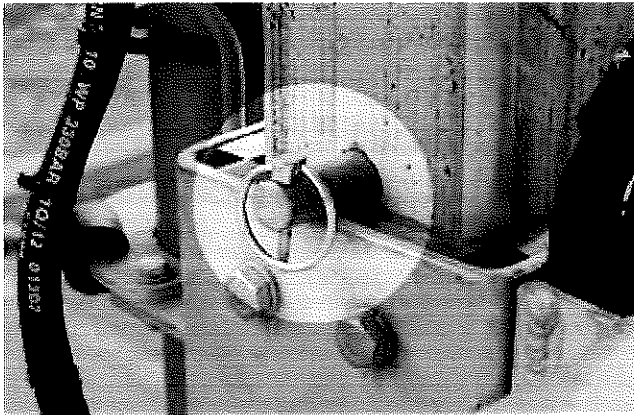


ALL AROUND SAFETY & RELIABILITY THROUGH INNOVATION



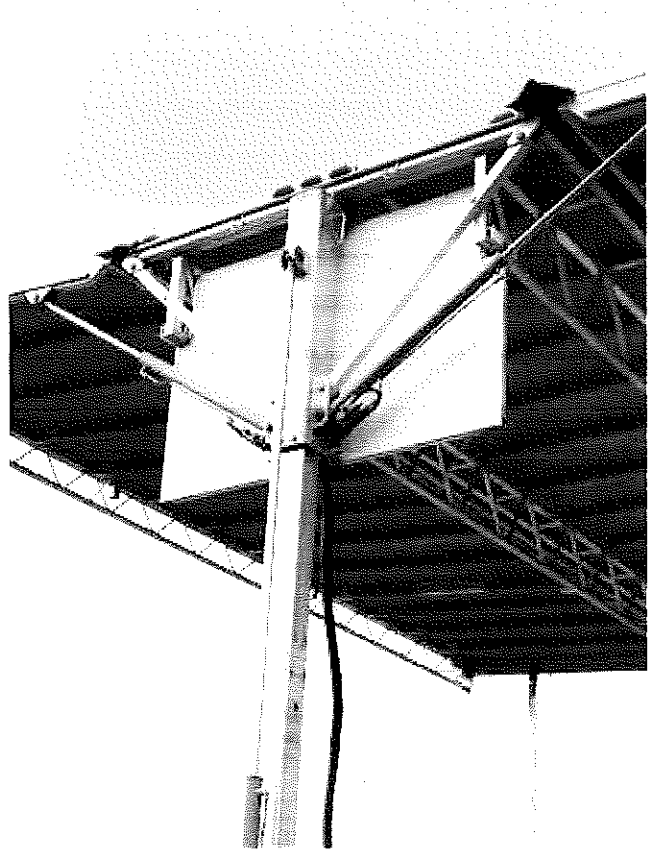
TOTAL CONTROL INSTALLATION

Pre-assembled rigid structural panels unfold hydraulically and sequentially. Locking devices and pins are incorporated into every step of the set up ensuring total control of the installation in complete safety. Totally self standing, the stage does not need to be secured with ballast and cables to maintain its stability and structural integrity.



RAISE AND LOWER THE ROOF SECURELY WITH DOUBLE MASTS WITH LIFTING MECHANISM

A set of sturdy masts lifts and lowers the roof and show support equipment. They function with balanced or unbalanced loads even in difficult weather conditions.



Offered at:

[Contact Us \(/ListingInquiry/?listingid=36878&p=1\)](#)

STAGELINE SL100 MOBILE STAGE SYSTEM

:

STAGELINE SL100 MOBILE STAGE SYSTEM
24' X 20' (7.3M X 6.1M)

STANDARD EQUIPMENT:

ROOF STRUCTURE & RIGGING

(4) BUILT-IN TRUSSES / ALUMINUM 5 CM (2") DIAMETER TUBE TRUSSING
(4) BUILT-IN RIGGING POINTS -RIGGING BAR / 4.27M (14') - SPANS 2 RIGGING POINTS FROM LEFT TO RIGHT
(2)ALUMINUM SIDE OVERHANG RIGGING BEAM (0.9 M (3') EXTENSION BEAM)
(4) ALUMINUM CORNER POSTS - FIBERGLASS ROOF MOLDED TO ALUMINUM STRUCTURE -
GALVANIZED STEEL MAST - ONE PER SIDE

HYDRAULICS:

DOUBLE MAST LIFTING MECHANISM -
HIGH POWER INTEGRATED HYDRAULIC SYSTEM
(4) HYDRAULIC STABILIZERS / STAGE LEVELS FROM 1.06 M (3' 6") TO 1.29 M (4' 3")
CAPACITY: 10,886 KG (24,000 LBS) EACH VERTICAL SUPPORT / 907 KG (2,000 LBS)
LATERAL SUPPORT
5.5 HP GAS ENGINE

STAGE:

DECK: GRAY PLYWOOD / QUICK LEVELING LEGS
MULTIFUNCTIONAL EXTRUDED ALUMINUM DECK EDGES
GUARDRAILS (STAGE MODEL) / ALUMINUM
SUPPORT BRACKETS BUILT-IN FOR STAGELINE PLATFORMS
STAIRWAY / ALUMINUM - 0.9 M (3') WIDE
WORK LIGHT

TRAILER:

DRAWBAR WITH PINTLE EYE
(2) LEAF SPRING AXLES
(4) TIRES - 0.40 M (16")
ELECTRIC BRAKES ON ALL WHEELS
EMERGENCY BREAKAWAY SYSTEM
STORAGE COMPARTMENT (19" X 18" X 16")
SPARE WHEEL / INTEGRATED STORAGE
(2)STORAGE BUMPERS