

CITY OF PORTLAND PUBLIC SERVICES DEPARTMENT

CONTRACT DRAWINGS

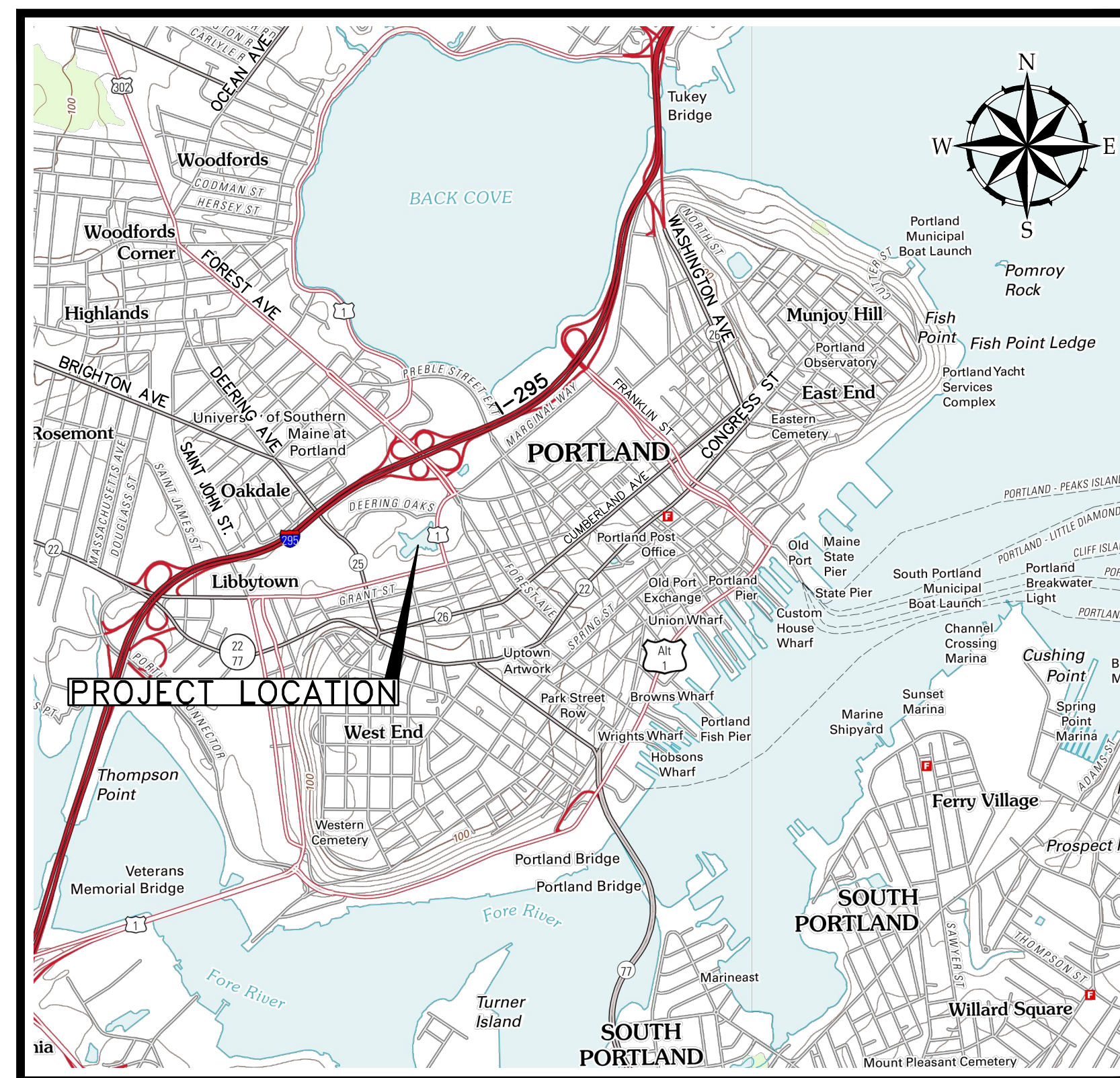
DEERING OAKS POND POND BOTTOM REPLACEMENT

YEAR
APPROVED
2014

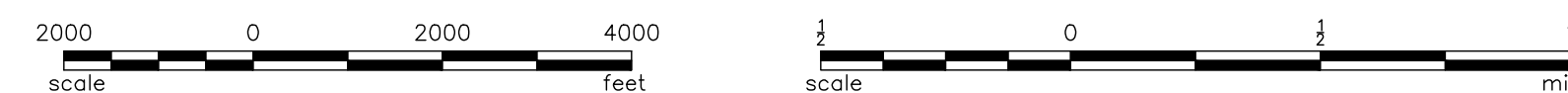
BID NUMBER: #XXXX
PERMIT SET – NOT FOR CONSTRUCTION
MAY 2014

KATHERINE A. EARLEY _____ DATE
CITY ENGINEER

MIKE FARMER _____ DATE
CITY PROJECT MANAGER



SITE LOCATION MAP



DRAWING INDEX	
1	G-001 GENERAL NOTES, LEGEND & ABBREVIATIONS
2	C-100 EXISTING CONDITIONS
3	C-102 PROPOSED POND BOTTOM PLAN
4	C-103 PROPOSED POND BOTTOM EXCAVATION INDEX & SECTIONS

Z:\222804-Portland-Cen-Eng-Services\wp_146-Deering-Oaks-Drawings\General\2013\48_46-C000.dwg, May 06, 2014, 11:00am

GENERAL NOTES:

- EXISTING CONDITIONS BASE MAP WAS COMPILED USING THE FOLLOWING DATA:
 - PLANIMETRIC AND TOPOGRAPHIC DATA PROVIDED BY THE CITY OF PORTLAND DPW ENGINEERING OFFICE COMPILED USING 2000 AERIAL IMAGES BY BRADSTREET CONSULTANTS OF MANCHESTER, MAINE.
 - POND RETAINING WALL REPLACEMENT PLANS BY EPDA DATED 1980 (APPROX.).
 - FOUNTAIN REPLACEMENT AT DEERING OAKS PARK RECORD DRAWINGS PREPARED BY RBCC DATED 12/18/2006.
 - MELLEN STREET RECORD DRAWINGS PREPARED BY WOODARD & CURRAN DATED 4/2014.
- VERTICAL DATUM IS REFERENCED TO NGVD29. HORIZONTAL DATUM IS REFERENCED TO STATE PLANE NAD 1983 (FEET), MAINE WEST ZONE.
- PUSH PROBES COLLECTED BY HALEY & ALDRICH IN SPRING 2013, REFER TO CONTRACT SPECIFICATIONS.
- THE UTILITY LOCATIONS SHOWN IN PLAN AND PROFILE ARE APPROXIMATE AND REQUIRE FIELD VERIFICATION BY THE CONTRACTOR. CONTACT THE CITY IMMEDIATELY UPON DISCOVERING ANY CONFLICTS WITH EXISTING AND PROPOSED UTILITY LOCATIONS. NOT ALL EXISTING UTILITIES ARE SHOWN ON PLANS.
- CONTRACTOR SHALL COORDINATE CONSTRUCTION ACTIVITY WITH UTILITY COMPANIES, EMERGENCY SERVICES AND CITY. CONTACTS ARE LISTED IN SPECIFICATIONS. NOTIFY UTILITY COMPANIES WITHIN 48 HOURS OF WORK ACTIVITY ADJACENT TO THOSE UTILITIES.
- CONTRACTOR SHALL NOTIFY ALL UTILITIES PRIOR TO COMMENCING WORK, ALLOWING SUFFICIENT TIME TO LOCATE AND MARK THE LOCATION OF BURIED UTILITIES. CONTRACTOR SHALL CONTACT "DIG SAFE", TELEPHONE 888-344-7233, PRIOR TO EXCAVATION.
- RESTORE ALL AREAS DISTURBED BY CONTRACTOR'S OPERATIONS TO ORIGINAL FINISH (GRAVEL, PAVEMENT, GRASS, ETC.). RESTORATION OF PAVED SURFACES, GRAVEL SURFACES, DRIVEWAYS, AND LAWNS DAMAGED BY CONSTRUCTION ACTIVITIES OUTSIDE OF LIMITS OF WORK INDICATED ON THE PLANS SHALL BE PERFORMED AT NO ADDITIONAL COST TO OWNER. ANY CURB OR SIDEWALK DAMAGED BY CONSTRUCTION ACTIVITIES SHALL BE REPLACED IN KIND AND SHALL CONFORM TO CITY OF PORTLAND AND MAINE DOT SPECIFICATIONS AT NO ADDITIONAL COST TO OWNER.
- PROPERLY PROTECT AND DO NOT DISTURB PROPERTY IRONS AND MONUMENTS. IF DISTURBED, THE PROPERTY MONUMENT SHALL BE RESET AT THE CONTRACTOR'S EXPENSE BY A LICENSED LAND SURVEYOR ACCEPTABLE TO THE CITY.
- EXISTING FACILITIES SHALL BE REMOVED AND PROTECTED DURING CONSTRUCTION AS REQUIRED TO COMPLETE THE WORK. CITY RETAINS RIGHT TO KEEP ANY AND ALL REMOVED FACILITIES. CONTRACTOR SHALL DISPOSE OF ANY REMOVED FACILITY AT THE REQUEST OF CITY AT CONTRACTOR'S EXPENSE.
- ALL TREES IN THE VICINITY OF THE CONSTRUCTION ACCESS SHALL BE PROTECTED BY CONTRACTOR DURING CONSTRUCTION.
- ALL WORK SHALL BE PERFORMED IN ACCORDANCE WITH THE REQUIREMENTS OF THE CITY TRAFFIC ENGINEER. THE CONTRACTOR SHALL SUBMIT A PROPOSED TRAFFIC CONTROL PLAN TO THE TRAFFIC ENGINEER AT LEAST 7 DAYS BEFORE BEGINNING CONSTRUCTION. THE PROPOSED TRAFFIC CONTROL PLAN SHALL BE SUBJECT TO APPROVAL BY THE TRAFFIC ENGINEER WHO MAY ATTACH SPECIAL CONDITIONS TO, OR REQUIRE MODIFICATIONS OF, THE TRAFFIC CONTROL PLAN. WORK SHALL NOT BEGIN UNTIL THE PLAN IS APPROVED BY THE TRAFFIC ENGINEER.
- DO NOT PARK, IMPEDE ACCESS TO, OR STORE EQUIPMENT ON ADJACENT CITY OR PRIVATELY OWNED LOTS, UNLESS PERMISSION HAS BEEN GRANTED IN WRITING BY CITY AND/OR LAND OWNER.
- RESTRICT ACCESS TO SITE THROUGH THE USE OF APPROPRIATE SIGNAGE, BARRIERS, FENCES, ETC. SITE SHALL BE LEFT WITH APPROPRIATE SAFETY MEASURES IN PLACE DURING NON-WORKING HOURS. NO TRENCH SHALL BE LEFT OPEN DURING NON-WORKING HOURS. SITE SAFETY IS THE RESPONSIBILITY OF CONTRACTOR, DURING BOTH WORKING AND NON-WORKING HOURS.
- CONTRACTOR IS RESPONSIBLE FOR OBTAINING ALL NECESSARY CONSTRUCTION PERMITS. PERMIT APPLICATIONS SHALL BE SUBMITTED WITH ADEQUATE TIME SO AS NOT TO DELAY CONSTRUCTION.
- ALL WORK ASSOCIATED WITH THE PROJECT SHALL BE COMPLETED IN ACCORDANCE WITH ARTICLES V, VII, AND IX OF CHAPTER 25-STREETS, SIDEWALKS, AND OTHER PUBLIC PLACES OF THE CITY OF PORTLAND CODE OF ORDINANCES.
- THE CITY OF PORTLAND ENGINEERING DIVISION REQUIRES THAT UPON COMPLETION OF CONSTRUCTION, A COMPLETE SET OF "RECORD" DRAWINGS THAT REFLECT ANY AND ALL MODIFICATIONS TO THE DESIGN BE SUBMITTED TO THE DIVISION. THESE DRAWINGS SHALL BE SUBMITTED IN BOTH DIGITAL AND HARD COPY FORMAT AS DEFINED IN THE SPECIFICATIONS PRIOR TO PAYMENT OF FINAL RETAINAGE.
- WORK IS PROPOSED IN CLOSE PROXIMITY TO EXISTING UTILITIES. PROTECTION OF EXISTING UTILITIES DURING CONSTRUCTION SHALL BE INCIDENTAL TO THE PAY ITEM UNDER WHICH WORK TO INSTALL SAID UTILITY IS PERFORMED.
- PROVIDE 6-INCHES OF LOAM AND MDOT SEEDING METHOD #1 IN ALL LAWN AREAS DISTURBED BY CONTRACTOR'S OPERATIONS.
- IF CONTRACTOR PROPOSES TO TEMPORARILY STOCKPILE ANY SURPLUS SOIL AND ROCK IN THE CITY OF PORTLAND, THE CONTRACTOR SHALL OBTAIN APPROVAL FOR EACH STOCKPILE LOCATION FROM THE ENGINEER. IF CONTRACTOR PROPOSES TO PERMANENTLY STOCKPILE ANY SURPLUS SOIL AND ROCK ON PROPERTY IN THE CITY OF PORTLAND, THE CONTRACTOR MUST OBTAIN ANY SITE PLAN PERMITS REQUIRED FROM THE CITY PLANNING AUTHORITY OR ANY FILL PERMITS REQUIRED FROM MDEP OR U.S. ARMY CORPS OF ENGINEERS. BOTH TEMPORARY AND PERMANENT STOCKPILE LOCATIONS SHALL MEET THE APPLICABLE SETBACK REQUIREMENTS IN THE CITY LAND USE CODE AND SHALL RECEIVE PROPER STABILIZATION AND EROSION & SEDIMENT CONTROL MEASURES IN ACCORDANCE WITH APPROVED SOIL EROSION & WATER POLLUTION CONTROL PLAN.

SYMBOLS

DESCRIPTION	EXISTING	PROPOSED
SANITARY SEWER MANHOLE		
STORM DRAIN MANHOLE		
CATCH BASIN W/ HEADSTONE		
CATCH BASIN, FIELD INLET		
UTILITY POLE W/GUY		
UTILITY POLE		
WATER GATE		
WATER VALVE		
WATER SHUT OFF		
HYDRANT		
SIGN		
TREE		
IRON PIN (FOUND)		
MONUMENTS (FOUND)		
PROBE & NUMBER		
MONITORING WELL		
BORING		
SEDIMENT SAMPLE		
SPOT GRADE		
ROADWAY BITUMINOUS PAVEMENT		
BLOCK MATTING		
TEMPORARY GRAVEL ACCESS		

LINE TYPES

DESCRIPTION	EXISTING	PROPOSED
CONTOUR (1' INTERVAL)		
CONTOUR (INDEX)		
SANITARY SEWER		
STORM DRAIN		
UNDERDRAIN		
WATER MAIN		
UNDERGROUND ELECTRIC		
GAS LINE		
OVERHEAD ELECTRIC		
PROPERTY LINE		
RIGHT OF WAY		
EASEMENT		
EDGE OF VEGETATION		
FENCE		
CENTERLINE		
RETAINING WALL		
CURB		
EDGE OF PAVEMENT		
EDGE OF GRAVEL		
CONTOUR (1' INTERVAL)		
CONTOUR (INDEX)		
CURB		
EDGE OF PAVEMENT		
EDGE OF GRAVEL		
TEMPORARY SEDIMENT BARRIER		
LIMIT OF WORK		

ABBREVIATIONS

&	AND ABOVE GROUND
A.G.	AND ABOVE GROUND
BIT	BITUMINOUS
B/W	BETWEEN
CB	CATCH BASIN
CI	CAST IRON
CMP	CENTRAL MAINE POWER
CMP	CORRUGATED METAL PIPE
CONC	CONCRETE
DI	DUCTILE IRON
DIA.	DIAMETER
DMH	DRAIN MANHOLE
DTL	DETAIL
E	UNDERGROUND ELECTRICAL
EL	ELEVATION
E.O.P.	EDGE OF PAVEMENT
EXIST.	EXISTING
FF	FINISH FLOOR
FT	FOOT/FEET
G	GAS MAIN
GS	GAS SERVICE
GALV.	GALVANIZED
GRAN.	GRANITE
HDPE	HIGH DENSITY POLYETHYLENE
HYD	HYDRANT
INV.	INVERT
LF	LINEAR FEET
MAX.	MAXIMUM
MDOT	MAINE DEPARTMENT OF TRANSPORTATION
MIN.	MINIMUM
MON	MONUMENT
N.I.C.	NOT IN CONTRACT
NO.	NUMBER
NR	NO REFUSAL
N.T.S.	NOT TO SCALE
OE	OVERHEAD ELECTRIC
OH	OVERHEAD
±	PLUS OR MINUS
LLS	LICENSED LAND SURVEYOR
PROP.	PROPOSED
PT.	POINT
PVC	POLYVINYL CHLORIDE
PWD	PORTLAND WATER DISTRICT
R.O.W.	RIGHT-OF-WAY
ROP	REINFORCED CONCRETE PIPE
REINF.	REINFORCED
REQ'D	REQUIRED
S	SLOPE (FT./FT.)
SD	SEWER
SD	STORM DRAIN
SMH	SEWER MANHOLE
SCH	SCHEDULE
STA.	STATION
TYP.	TYPICAL
U.P.	UTILITY POLE
VC	VITRIFIED CLAY
VIT.	VITRIFIED CLAY
W	WEST
W	WATER
W/W	WITH WATERMAIN
WS	WATER SERVICE
WV	WATER VALVE

41 HUTCHINS DRIVE
PORTLAND, MAINE 04102
800.426.4262 | www.woodardcurran.com

WOODARD & CURRAN
COMMITMENT & INTEGRITY DRIVE RESULTS

REFERENCES:

DESIGNED BY:	BCM/LJS
DRAWN BY:	BCM
CHECKED BY:	DAS
SCALE:	AS NOTED
DATE:	MAY 2014

R.O.W.	RIGHT-OF-WAY
ROP	REINFORCED CONCRETE PIPE
REINF.	REINFORCED
REQ'D	REQUIRED
S	SLOPE (FT./FT.)
SD	SEWER
SD	STORM DRAIN
SMH	SEWER MANHOLE
SCH	SCHEDULE
STA.	STATION
TYP.	TYPICAL
U.P.	UTILITY POLE
VC	VITRIFIED CLAY
VIT.	VITRIFIED CLAY
W	WEST
W	WATER
W/W	WITH WATERMAIN
WS	WATER SERVICE
WV	WATER VALVE

DEERING OAKS POND
POND BOTTOM REPLACEMENT

CITY OF PORTLAND, MAINE
PUBLIC SERVICES DEPARTMENT
ENGINEERING SECTION

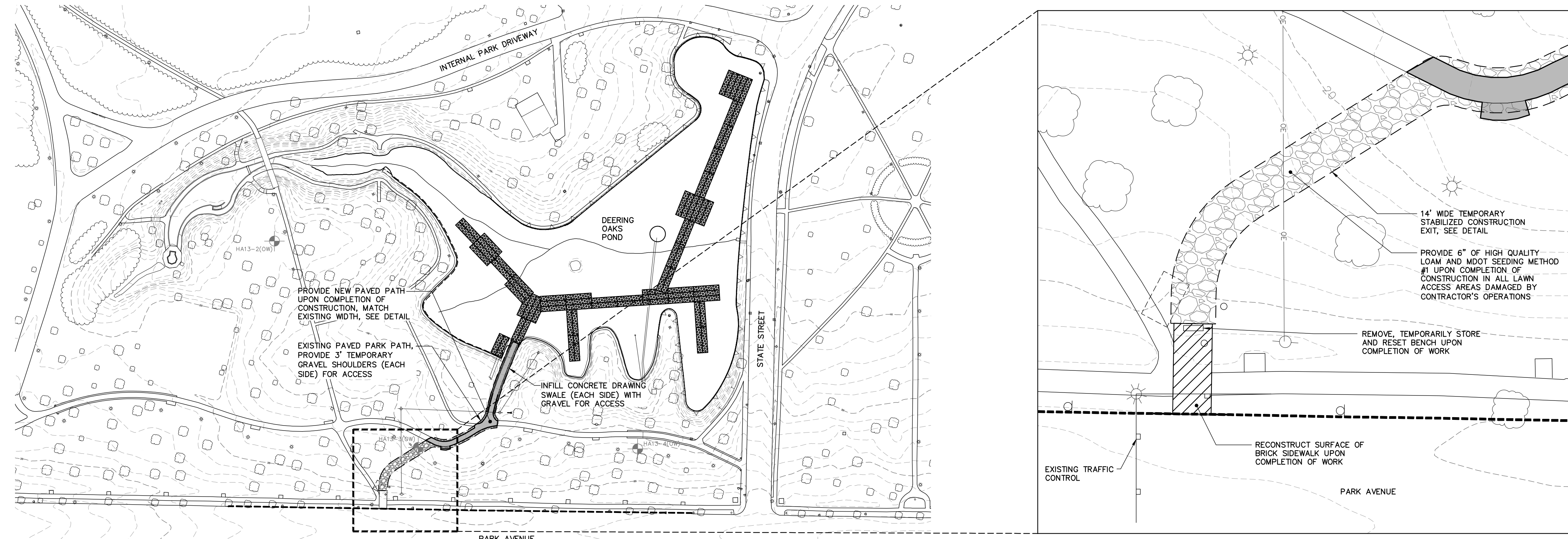
GENERAL NOTES, LEGEND &
ABBREVIATIONS

CITY OF PORTLAND, MAINE
PUBLIC SERVICES DEPARTMENT
ENGINEERING SECTION



SHEET #
1 OF 4

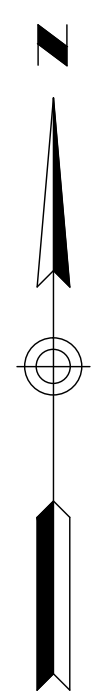
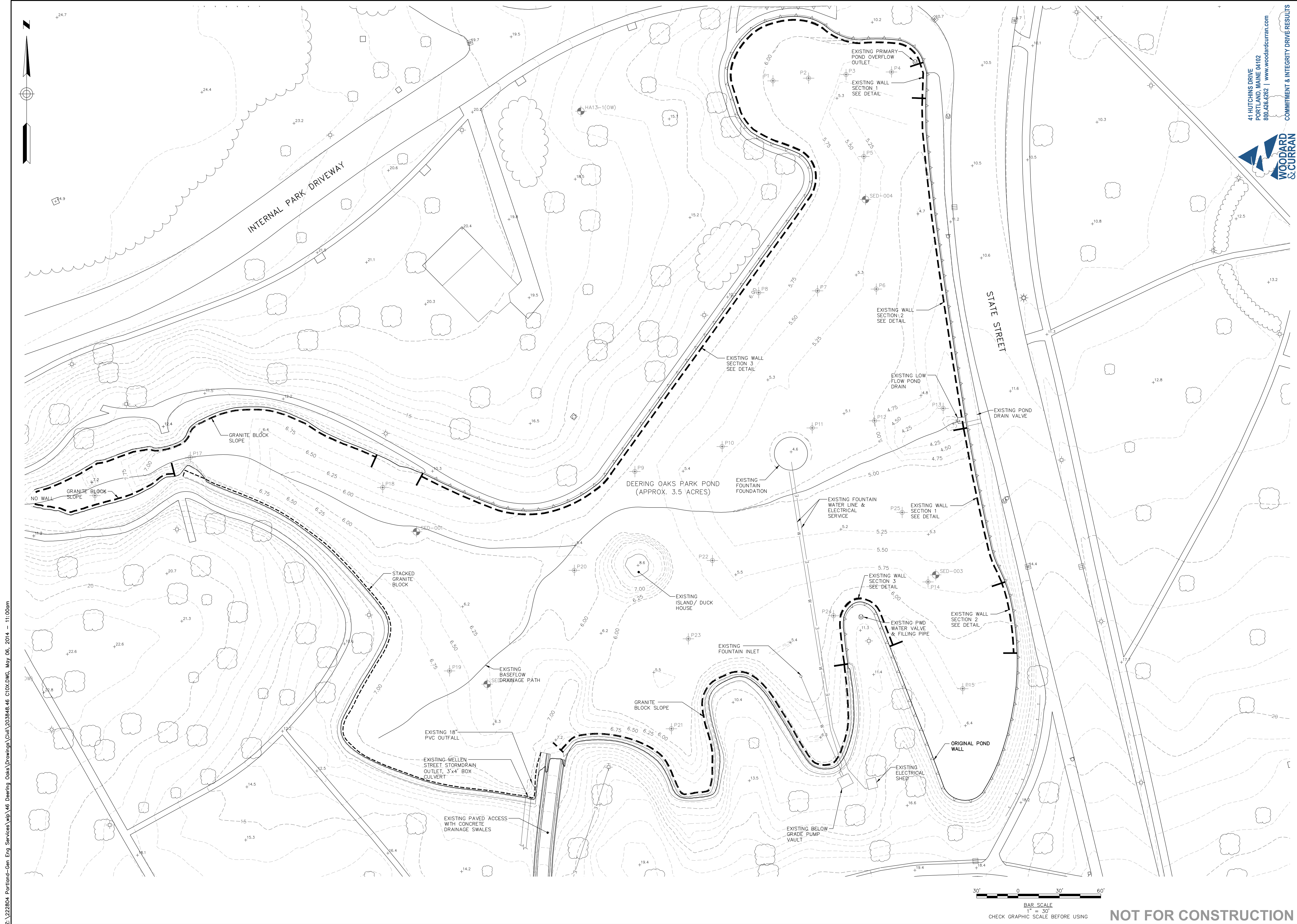
PLAN NUMBER
G-001



POND CONSTRUCTION ACCESS PLAN
SCALE: 1"=100'

CONSTRUCTION EXIT DETAIL
SCALE: 1"=20'

NOT FOR CONSTRUCTION



41 HUTCHINS DRIVE
 PORTLAND, MAINE 04102
 800.426.4262 | www.woodardcurran.com

WOODARD & CURRAN
 COMMITMENT & INTEGRITY DRIVES RESULTS

REFERENCES:

DESIGNED BY:	BCM/ALB
DRAWN BY:	BCM
CHECKED BY:	DAS
SCALE:	AS NOTED
DATE:	MAY 2014

DEERING OAKS POND POND BOTTOM REPLACEMENT
EXISTING CONDITIONS

CITY OF PORTLAND, MAINE
 PUBLIC SERVICES DEPARTMENT
 ENGINEERING SECTION



SHEET #
 2 OF 4

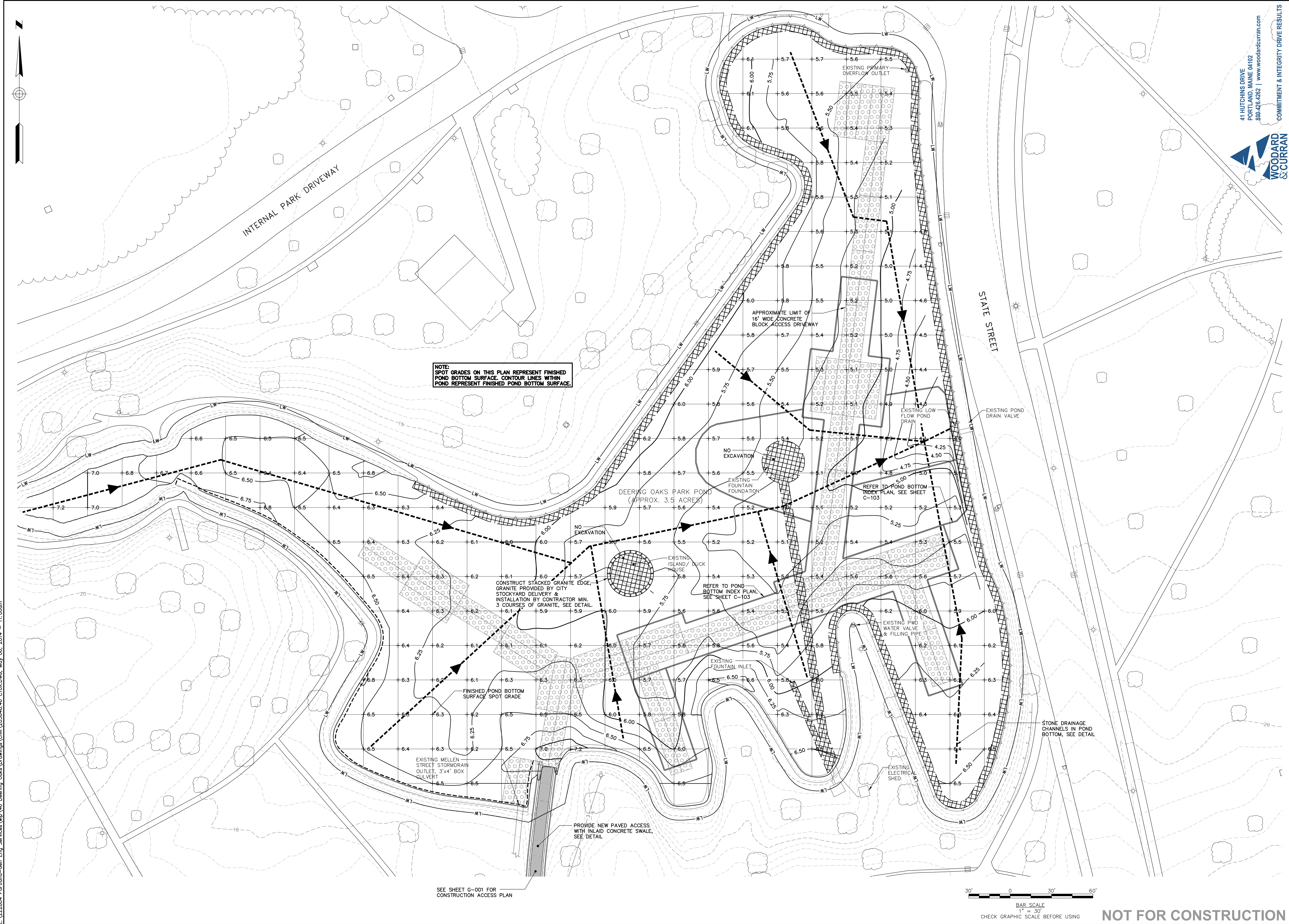
PLAN NUMBER
 C-100



NOT FOR CONSTRUCTION

Z:\222804_Portland-Gen Eng Services_Vip_46_Deering Oaks Drawings\Civil\203546.46_CIOX.DWG, May 06, 2014, 11:00am

Z:\222804_Portland-Gen Eng Services\vip_46 Deering Oaks Drawings\Civil\203546_46 C10X.DWG, May 06, 2014, 11:00am



NOTE:
SPOT GRADES ON THIS PLAN REPRESENT FINISHED POND BOTTOM SURFACE. CONTOUR LINES WITHIN POND REPRESENT FINISHED POND BOTTOM SURFACE.

SEE SHEET C-001 FOR CONSTRUCTION ACCESS PLAN



BAR SCALE
1" = 30'
CHECK GRAPHIC SCALE BEFORE USING

41 HUTCHINS DRIVE
PORTLAND, MAINE 04102
800-426-6262 | www.woodardcurran.com
WOODARD & CURRAN
COMMITMENT & INTEGRITY DRIVE RESULTS

LDD PROJECT NAME: N/A
DRAWING NAME: 203546_46 C10X.DWG
FIELD BOOK USED: N/A

REFERENCES:

DESIGNED BY:	BCM/ALB
DRAWN BY:	BCM
CHECKED BY:	DAS
SCALE:	AS NOTED
DATE:	MAY 2014

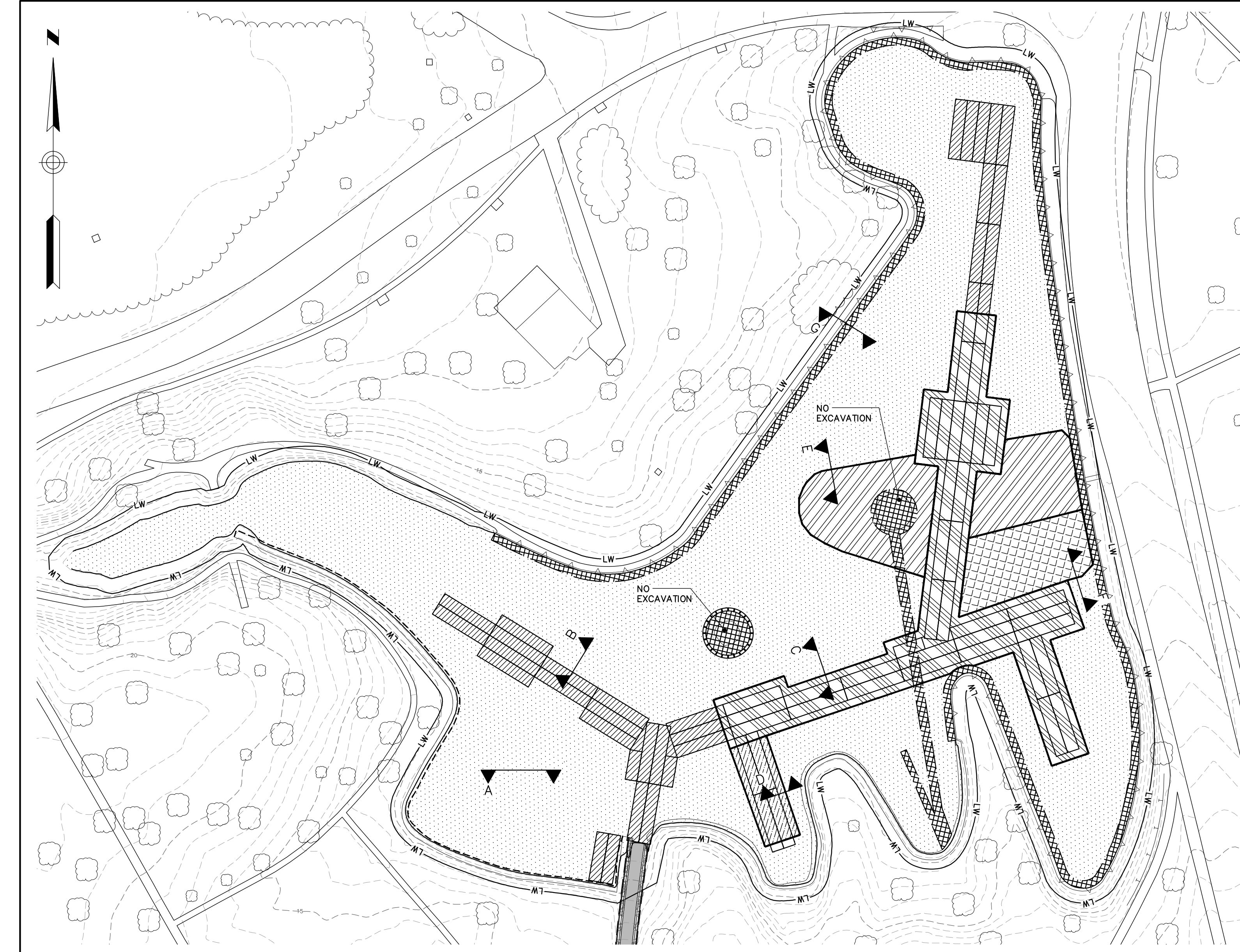
DEERING OAKS POND
POND BOTTOM REPLACEMENT
PROPOSED POND
BOTTOM PLAN

CITY OF PORTLAND, MAINE
PUBLIC SERVICES DEPARTMENT
ENGINEERING SECTION



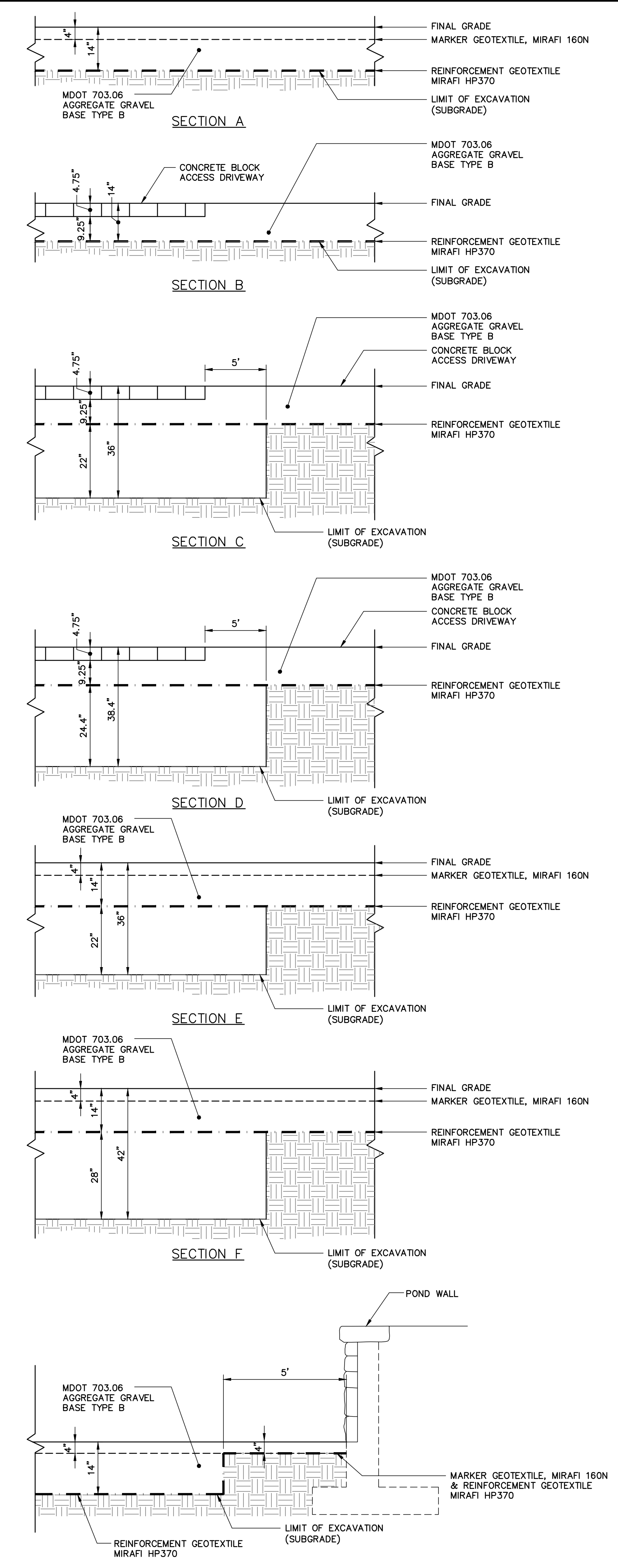
SHEET #
3 OF 4
PLAN NUMBER
C-102

NOT FOR CONSTRUCTION



HATCH INDEX

SECTION A	
SECTION B	
SECTION C	
SECTION D	
SECTION E	
SECTION F	
NO EXCAVATION OR 4" EXCAVATION ADJACENT TO WALLS	



POND BOTTOM EXCAVATION SECTIONS
N.T.S.

41 HUTCHINS DRIVE
PORTLAND, MAINE 04102
800.426.4262 | www.woodardcurran.com

WOODARD & CURRAN

LDD PROJECT NAME:
N/A
DRAWING NAME:
203848.46 C10X.DWG
FIELD BOOK USED:
N/A

REFERENCES:

DESIGNED BY:	BCM/LJS
DRAWN BY:	BCM
CHECKED BY:	DAS
SCALE:	AS NOTED
DATE:	MAY 2014

DEERING OAKS POND
POND BOTTOM REPLACEMENT
PROPOSED POND BOTTOM
EXCAVATION INDEX &
SECTIONS

CITY OF PORTLAND, MAINE
PUBLIC SERVICES DEPARTMENT
ENGINEERING SECTION



SHEET #
4 OF 4
PLAN NUMBER
C-103

NOT FOR CONSTRUCTION

Z:\222804_Portland-Gen Eng Services_Vip_46 Deering Oaks Drawings\Civil\203848.46 C10X.DWG_May 06, 2014 - 11:00am