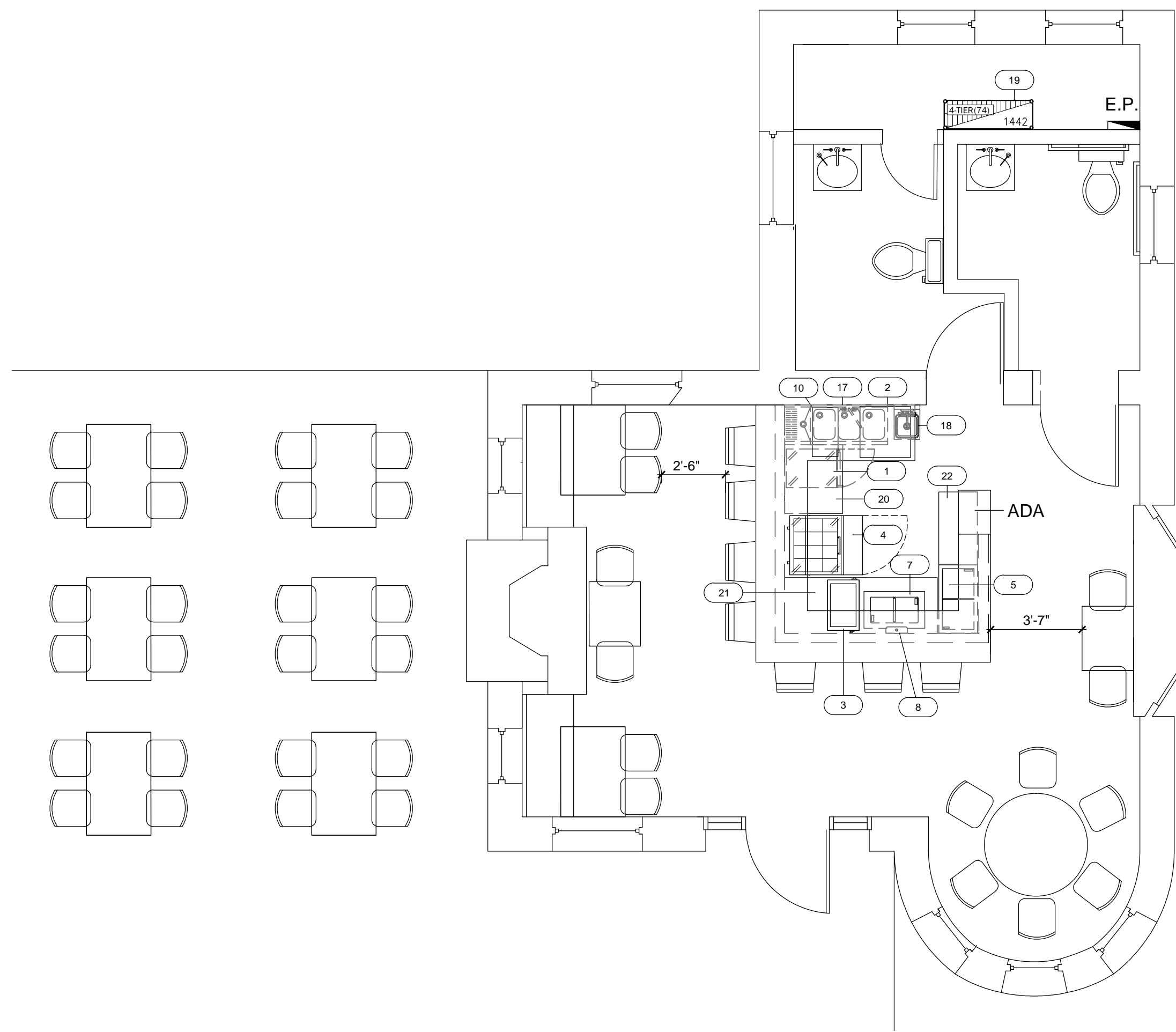
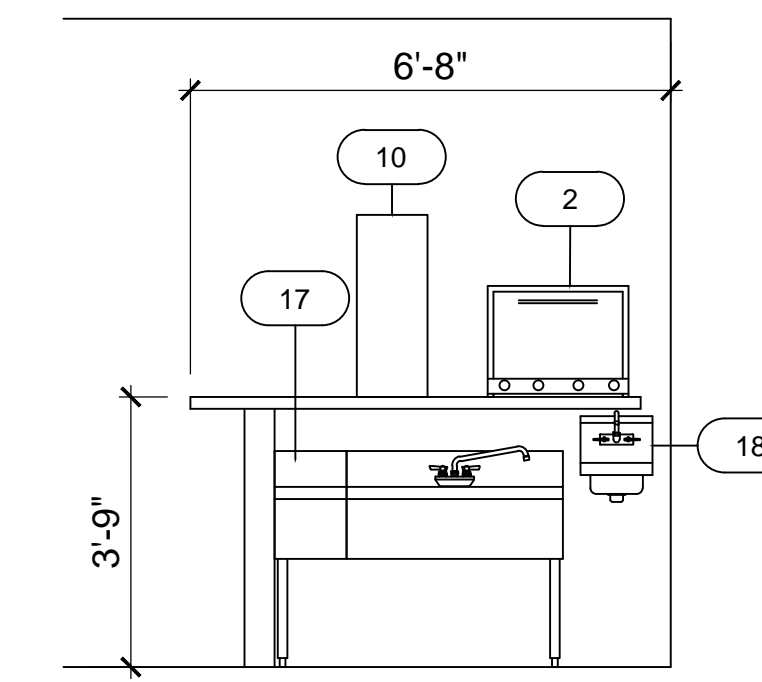


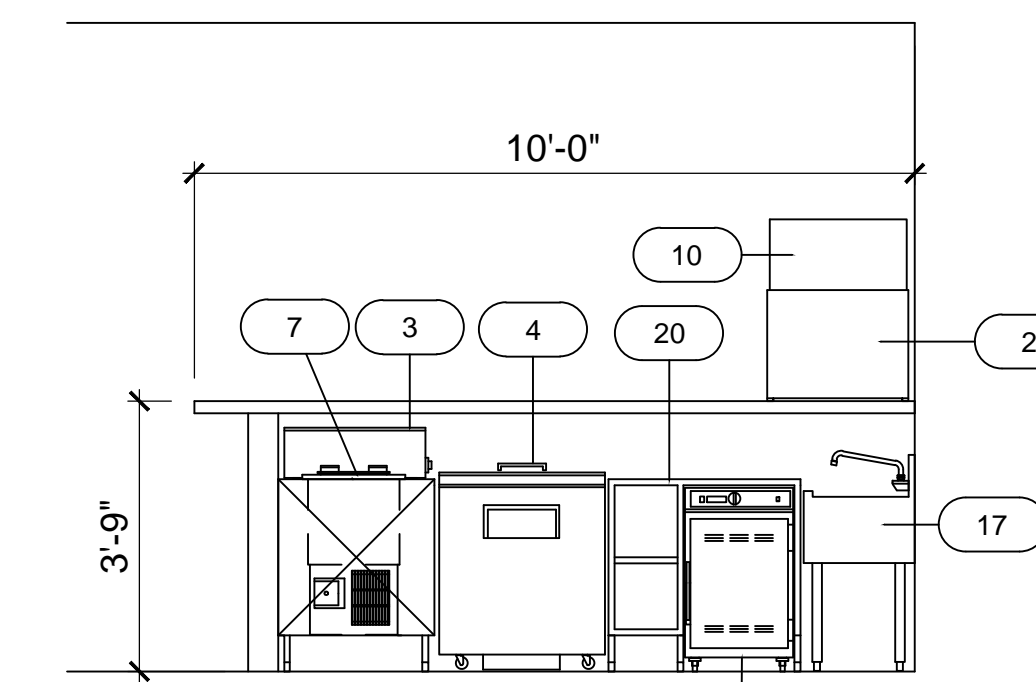
ISSUED FOR CONSTRUCTION
05-06-2016



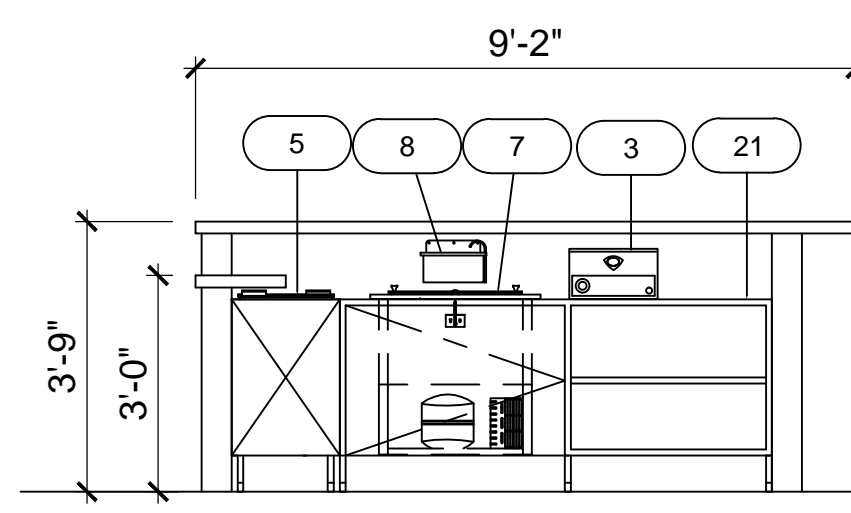
FOODSERVICE EQUIPMENT LAYOUT
SCALE: 1/4" = 1'-0"



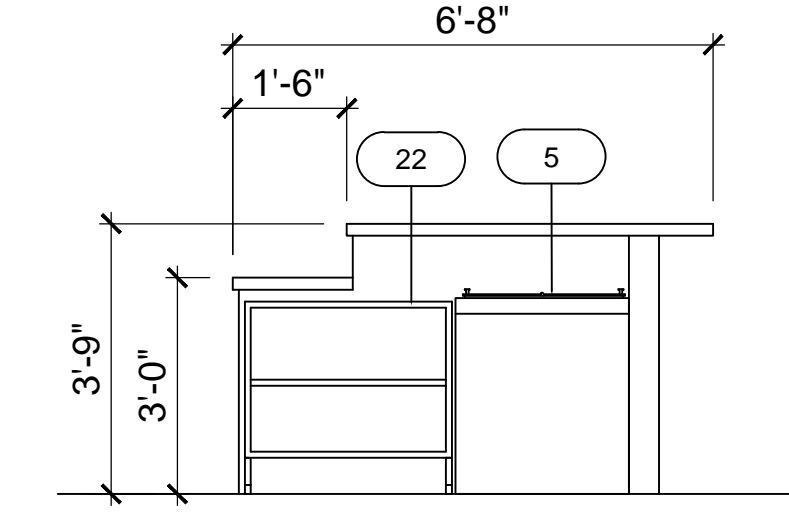
THREE BAY SINK WALL
SCALE: 3/8" = 1'-0"



HOT AND COLD WALL
SCALE: 3/8" = 1'-0"



SOUP WALL
SCALE: 3/8" = 1'-0"



STORAGE WALL
SCALE: 3/8" = 1'-0"

EQUIPMENT UTILITY

| REV | ITEM NO. | QTY | ITEM DESCRIPTION | MFR | MODEL | ELECTRICAL | | | | | | PLUMBING | | | | | | REMARKS | ITEM NO. | |
|-----|----------|-----|--|---------------|----------------------------|------------|----|-------|-----|------|-------|----------|---------|---------|-----------------|---------|----------|---------|--|-------|
| | | | | | | VOLTS | PH | AMPS | HP | KW | CONN. | NEMA | CW (IN) | HW (IN) | IW (IN) | DW (IN) | GAS SIZE | | | MBTUS |
| | 1 | 1 | HEATED LOW TEMP HOLDING CABINET | ALTO-SHAAM | 500-S | 120 | 1 | 8.4 | | 1.0 | DR | 5-15P | | | | | | | SOLID DOOR HINGED RIGHT WITH 2-1/2" CASTERS | 1 |
| C | 2 | 1 | CONVECTION OVEN | CADCO | OV-023 | 208-240 | 1 | 11.25 | | 2.7 | SP | 6-15P | | | | | | | | 2 |
| F | 3 | 1 | HOT FOOD WELL | WELLS | SMPT | 120 | 1 | 13.75 | | 1.65 | DR | 5-15P | | | | | | | | 3 |
| A | 4 | 1 | MEGA TOP SANDWICH / SALAD PREPARATION REFRIGERATOR | TRUE | TSSU-27-12M-C | 115 | 1 | 4.9 | 1/5 | | DR | 5-15P | | | | | | | DOOR HINGED RIGHT WITH LIFT OFF COVERS, AND 2-1/2" CASTERS | 4 |
| E | 5 | 1 | REFRIGERATED MERCHANDISER | NIC | BY OTHERS | | | | X | X | X | X | | | | | | | ALL TRADES TO VERIFY FINAL UTILITIES PRIOR TO ROUGH-INS | 5 |
| B | 6 | 1 | SPARE NUMBER | CUSTOM | SPARE NUMBER | | | | | | | | | | | | | | | 6 |
| A | 7 | 1 | DROP-IN FREEZER | RANDELL | 9550A | 115 | 1 | 6.3 | 1/3 | | DR | 5-15P | | | | | | | DROP-IN UNIT | 7 |
| B | 8 | 1 | DIPWELL 10" W/ INSTALL KIT 3" WIDE W/ FAUCET | DIPWELL | | | | | | | | | 1/2" | | 1", IW1 | | | | | 8 |
| A | 9 | 1 | SPARE NUMBER | CUSTOM | SPARE NUMBER | | | | | | | | | | | | | | | 9 |
| A | 10 | 1 | ESPRESSO CAPPUCCINO MACHINE | RANCILIO/EGRO | EGRO ONE-TOUCH PURE COFFEE | 220-240 | 1 | 30.0 | | 6.6 | SP | L6-30R | 3/8" | | 2", IW1 | | | | | 10 |
| A | 11 | 1 | SPARE NUMBER | CUSTOM | SPARE NUMBER | | | | | | | | | | | | | | | 11 |
| | 12 | 1 | SPARE NUMBER | CUSTOM | SPARE NUMBER | | | | | | | | | | | | | | | 12 |
| | 13 | 1 | SPARE NUMBER | CUSTOM | SPARE NUMBER | | | | | | | | | | | | | | | 13 |
| | 14 | 1 | SPARE NUMBER | CUSTOM | SPARE NUMBER | | | | | | | | | | | | | | | 14 |
| B | 15 | 1 | SPARE NUMBER | CUSTOM | SPARE NUMBER | | | | | | | | | | | | | | | 15 |
| B | 16 | 1 | SPARE NUMBER | CUSTOM | SPARE NUMBER | | | | | | | | | | | | | | | 16 |
| C | 17 | 1 | UNDERBAR SINK UNIT | PERLICK | TS43R | | | | | | | | 1/2" | 1/2" | (4) 1-1/2", IW2 | | | | 48" LENGTH WITH (3) 10" X 14" X 9-1/4" DEEP BOWLS, AND 12" WIDE DRAINBOARD ON LEFT | 17 |
| E | 18 | 1 | HAND SINK | ADVANCE TABCO | 7-PS-23 | | | | | | | | 1/2" | 1/2" | | | | | G.C. TO PROVIDED WALL BLOCKING AS REQUIRED. | 18 |
| F | 19 | 1 | STORAGE SHELVING | CENTAUR | CHROME | | | | | | | | | | | | | | FOUR (4) TIER HIGH WITH CHROME FINISH | 19 |
| F | 20 | 1 | PLATING COUNTER | TRIMARK | FABRICATE | | | | | | | | | | | | | | S/S. 32" L X 27" X 32" H. WITH CABINET, OPEN SHELVES, AND PROVISIONS FOR ALTO SHAAM ITEM #1. | 20 |
| F | 21 | 1 | SOUP COUNTER | TRIMARK | FABRICATE | | | | | | | | | | | | | | S/S. 6'-0" L. X 26" X 32" HIGH, WITH CABINET, AND REMOVABLE PANEL FOR COMPRESSOR. | 21 |
| F | 22 | 1 | STORAGE COUNTER | TRIMARK | FABRICATE | | | | | | | | | | | | | | S/S. 34" L. X 18" X 32" HIGH WITH OPEN SHELF CABINET. | 22 |

This document contains confidential information, is an instrument of a professional service, and the property of TriMark. It shall not be used on other projects or for the extension of this project without TriMark's written approval.

Owner and all Contractors to check and verify existing dimensions and conditions in the field before starting construction and to notify TriMark of any material or detail changes.

REVISIONS

| DATE | BY | NO. | DESCRIPTION |
|---------|-----|-----|------------------|
| 3/21/16 | RDP | A | REVISION |
| 4/13/16 | RDP | B | REVISION |
| 4/15/16 | RDP | | ADDED ALT PLAN |
| 4/18/16 | RDP | C | REVISION |
| 4/25/16 | RDP | D | REVISION |
| 4/26/16 | RDP | E | REVISION |
| 4/28/16 | RDP | F | REVISION |
| 5/6/16 | RDP | | UTILITY DRAWINGS |

Tiqa Cafe
PORTLAND, ME

Bar Layout

PROJECT NUMBER:

16-030

DATE:

02-09-2016

SCALE:

1/4" = 1'-0"

DRAWN BY:

RDP

APPROVED BY:

MJT

SHEET TITLE:

FOODSERVICE EQUIPMENT PLAN

SHEET NUMBER:

QF100