

RESURGENCE
 ENGINEERING & PRESERVATION, INC.
 132 BRENTWOOD STREET
 PORTLAND, ME 04103
 207.773.4880

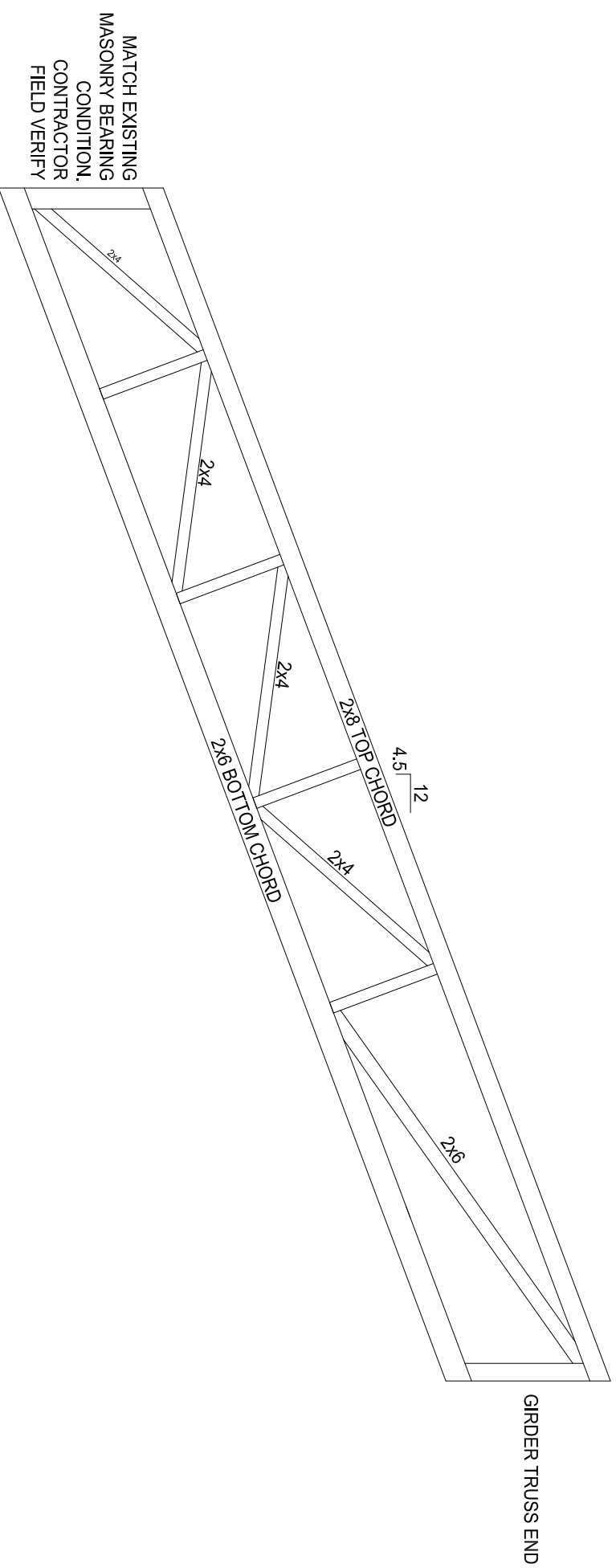
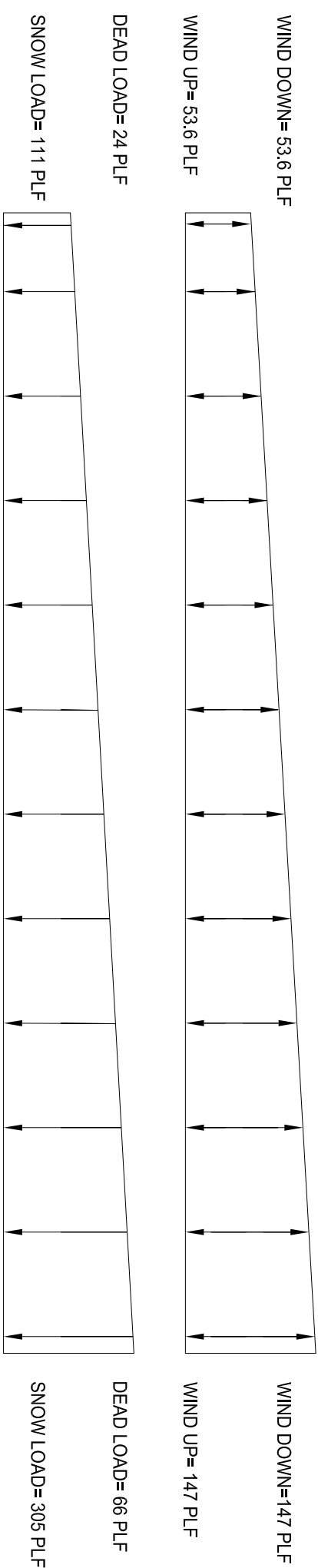
DEERING OAKS BANDSTAND STRUCTURAL STABILIZATION PORTLAND, MAINE

ELEVATIONS

Date: 11/27/13
 Issued for:

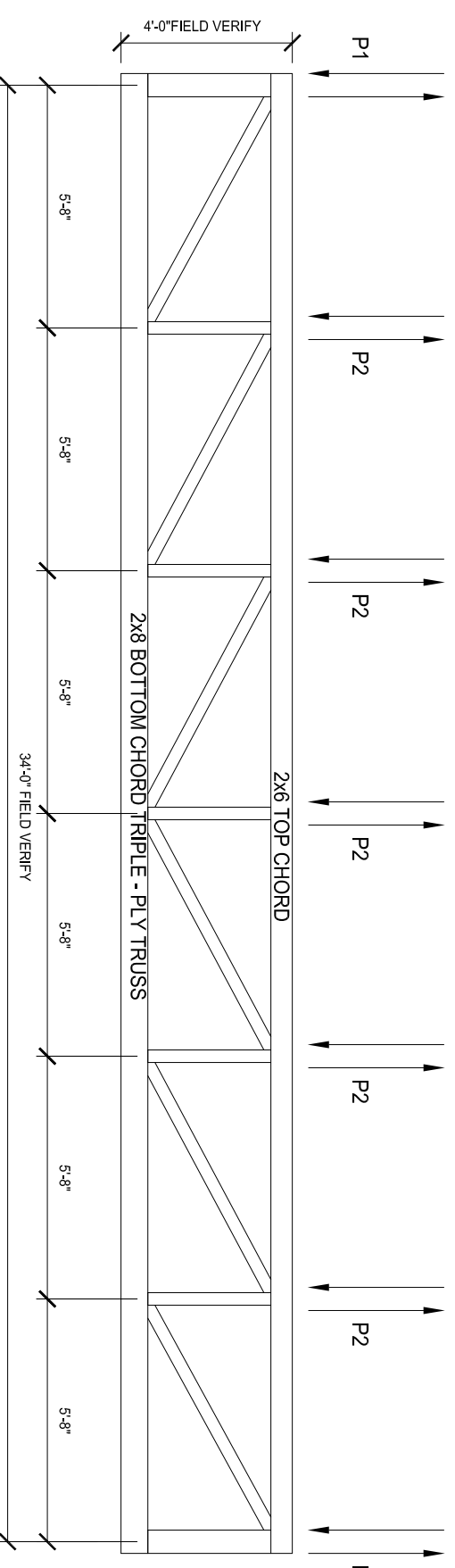
BID SET

S3.001



2 TRUSS 1 (TRUSS 7 OPP. HAND)
 SCALE: 1/2" = 1'-0"

P1 - EDGE TRUSS LOAD MAX. DOWNWARD LOAD (LOAD CASE 3)	3.2K
MAX. UPLIFT LOAD (LOAD CASE 7)	1.0K
P2 - INTERIOR TRUSS LOAD MAX. DOWNWARD LOAD (LOAD CASE 3)	4.8 K
MAX. UPLIFT LOAD (LOAD CASE 7)	1.5K



1 TRUSS 8 - GIRDER TRUSS
 SCALE: 1/2" = 1'-0"