

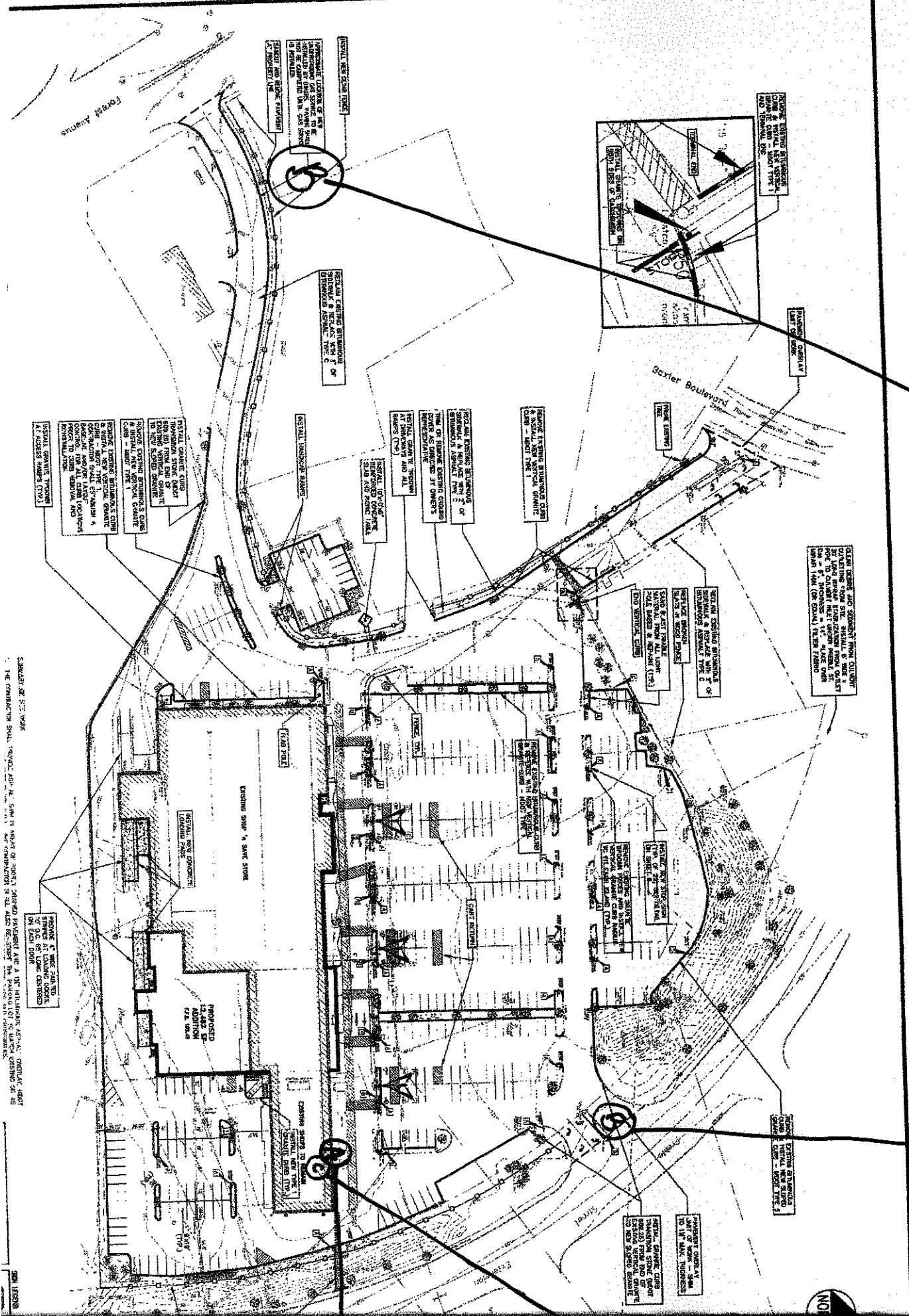
Welch signage - 295 Forest Avenue - Unit #6

B - 2 sided pylon sign

B - 2 sided pylon sign

A - Building facade

C - Back lit overhead sign



SCALE: 1/8" = 1'-0"  
 THE CONTRACTOR SHALL VERIFY THE EXISTING CONDITIONS AND A RE-CONSTRUCTION IS TO BE SHOWN IN ALL CASES.  
 2011.05.20