

KEY NOTES: RESTROOM EQUIPMENT:

REPRESENTED BY THIS SYMBOL: 

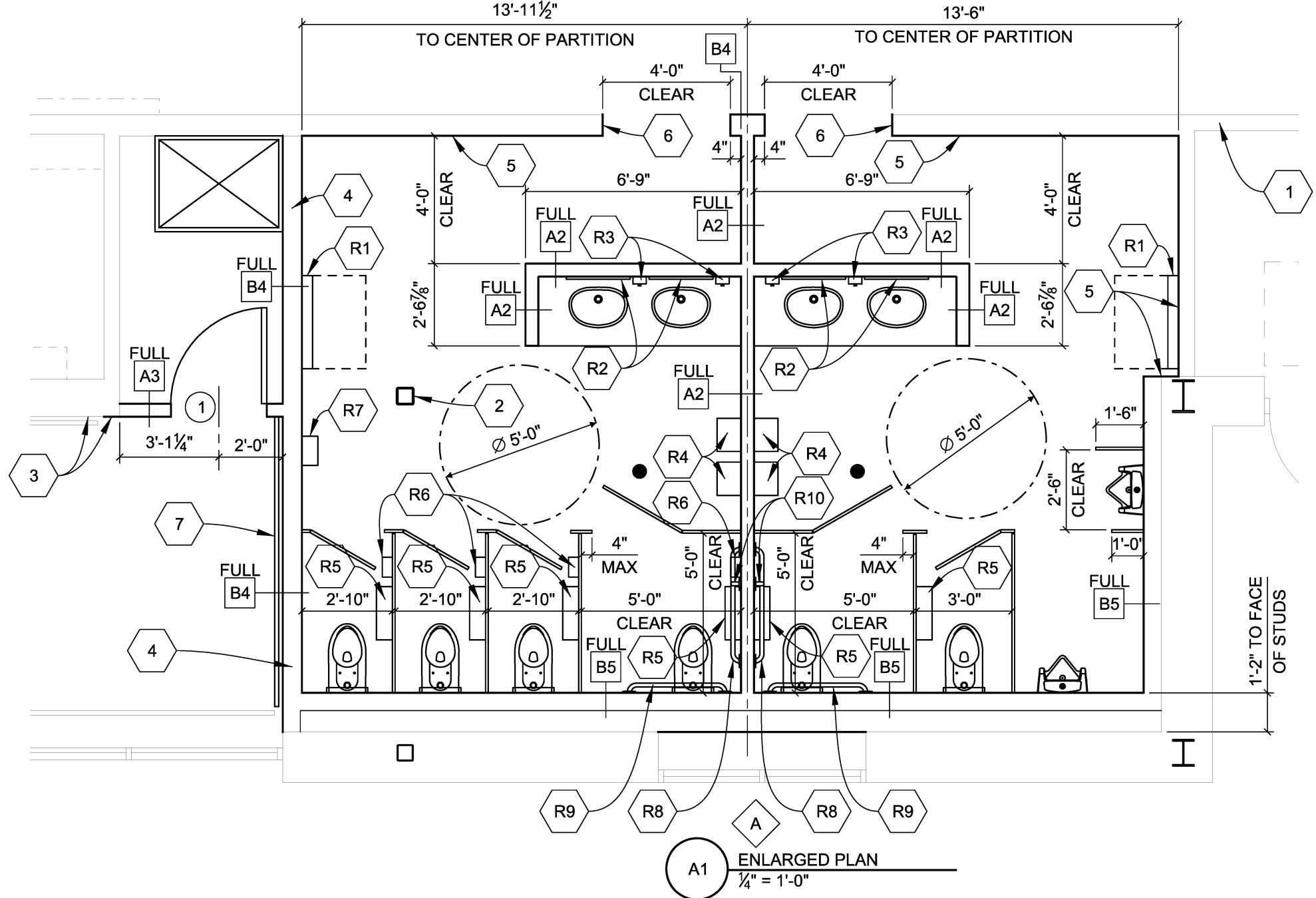
- R1. BABY CHANGING STATION BY OWNER GENERAL CONTRACTOR TO PROVIDE 5/8" PLYWOOD UNDER GWB FOR LENGTH OF WALL (TYP)
- R2. MIRROR TO BE CENTERED OVER SINK (TYP)
- R3. SOAP DISPENSER
- R4. PAPER TOWEL DISPENSER & TRASH RECEPTACLE (TYP)
- R5. TOILET PAPER DISPENSER (TYP)
- R6. SANITARY NAPKIN DISPOSAL (TYP WOMENS ROOM ONLY)
- R7. SANITARY NAPKIN DISPENSER (TYP WOMENS ROOM ONLY)
- R8. 42" GRAB BAR (SEE FIXTURE HEIGHT DETAIL ON A402 AND A403)
- R9. 36" GRAB BAR (SEE FIXTURE HEIGHT DETAIL ON A402 AND A403)
- R10. 18" VERTICAL GRAB BAR (SEE FIXTURE HEIGHT DETAIL)

KEY NOTES: REPRESENTED BY THIS SYMBOL: 

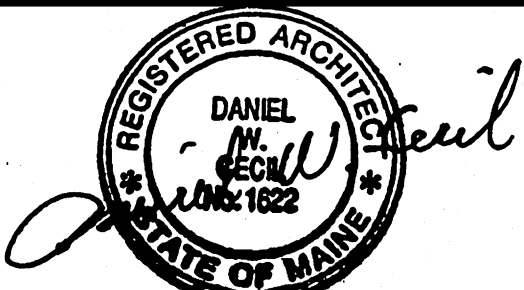
- 1. EXISTING PARTITION TO REMAIN
- 2. WRAP EXISTING STEEL HSS COLUMN WITH STAINLESS STEEL COLUMN COVER FROM FINISH FLOOR TO ABOVE FINISHED CEILING
- 3. ALIGN FACE OF FINISH WITH EXISTING FINISH
- 4. RUN METAL STUD PARTITION TO BOTTOM OF EXISTING STRUCTURE ABOVE
- 5. REMOVE EXISTING WALL FINISH AND PROVIDE MOISTURE RESISTANT GYPSUM WALL BOARD TO 1'-0" ABOVE FINISHED CEILING
- 6. AT NEW OPENING IN EXISTING METAL STUD AND GYPSUM PARTITION - PROVIDE GYPSUM WALL BOARD FINISH AND PREP FOR PAINT TO MATCH ADJACET EXISTING WALL FINISH AND COLOR
- 7. PROVIDE NEW CART STOP - FIELD VERIFY EXISTING EXISTING MANUFACTURER, STYLE AND FINISH AND MATCH WITH NEW

GENERAL NOTES:

- A. DESIGN DRAWING ELEVATION 100'-0" EQUAL ACTURAL GRADE ELEVATION.
- B. DIMENSIONS ARE TO FACE OF FINISHED WALL OR COLUMN CENTER LINE. DIMENSIONS AT COOLER / FREEZERS ARE TO FACE OF COOLER / FREEZER WALL UNLESS OTHERWISE NOTED.
- C. PROVIDE CLEAR CORNER GUARDS AT ALL OUTSIDE CORNERS 3" x 3" x 48" HIGH - INSTALL CORNER GUARDS 4" ABOVE FINISH FLOOR TO 48" HIGH - MANUFACTURED BY PAWLING CORPORATION - PROTEK CG-25.
- D. GERNERAL CONTRACTOR TO PROVIDE WOOD BLOCKING IN ALL PARTITIONS FOR SURFACE MOUNTED EQUIPMENT INCLUDING, BUT NOT LIMITED TO FIRE EXTINGUISHERS, SHELVING, COUNTERS AND CABINETS.
- E. REFER TO DRAWING A102 FOR FLOOR FINISHES.
- F. REFER TO DRAWINGS A204, A205 AND 206 FOR INTERIOR ELEVATIONS.
- G. FOR WALL TYPES SEE DETAILS ON DRAWING A501 AND A501.1
- H. FOR DOOR TYPES SEE DRAWING A601



A1 ENLARGED PLAN
1/4" = 1'-0"



NO	REVISIONS	DATE	BY
0	ISSUED FOR REVIEW	11-10-16	MJW
0	ISSUED FOR CONSTRUCTION	11-14-16	MJW

HARRIMAN
© 2016
Project No. 16166

Auburn, ME 207.784.5100
Portland, ME 207.775.0053
Portsmouth, NH 603.626.1242
Boston, MA 617.426.5050

DWG TITLE: ENLARGED RESTROOM FLOOR PLAN
LOCATION: PRODUCE COOLER AND RESTROOMS PORTLAND, ME

SCALE 1/4" = 1'-0"
DRAWN MJW
DATE: 11-14-2016
DRAWING NO. A401
Store No. 8351