

LEGEND NOTES

REVISIONS

PIPE SYMBOLS

AGRIC. SLAB PIPING
 BELOW SLAB PIPING
 PIPE TERMINATION
 RISERS
 MACHINE ROOM CONNECTIONS
 FIELD SPLIT VALVES, TRIM VALVES
 MOUNTED SPLIT VALVES, TRIM VALVES AS SHOWN TO
 LEAK-ARREST VALVE WITH SHOWN IN THE FIELD TERMINATION
 1) VALVE AND FIELD TERMINATION
 2) FIELD TERMINATION
 3) VALVE AND FIELD TERMINATION
 4) VALVE AND FIELD TERMINATION
 5) VALVE AND FIELD TERMINATION
 6) VALVE AND FIELD TERMINATION
 7) VALVE AND FIELD TERMINATION
 8) VALVE AND FIELD TERMINATION
 9) VALVE AND FIELD TERMINATION
 10) VALVE AND FIELD TERMINATION
 11) VALVE AND FIELD TERMINATION
 12) VALVE AND FIELD TERMINATION
 13) VALVE AND FIELD TERMINATION
 14) VALVE AND FIELD TERMINATION
 15) VALVE AND FIELD TERMINATION
 16) VALVE AND FIELD TERMINATION
 17) VALVE AND FIELD TERMINATION
 18) VALVE AND FIELD TERMINATION
 19) VALVE AND FIELD TERMINATION
 20) VALVE AND FIELD TERMINATION

KEYED NOTES

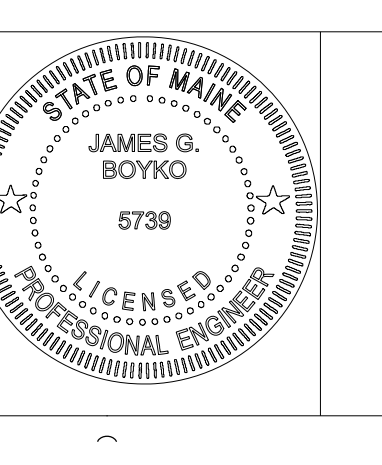
1) INITIAL PIPING AND REFRIGERATION SYSTEMS PERMITS & INSTALLATION SPECIFICATIONS AND DRAWINGS.
 2) CONNECTIONS SHALL BE MADE TO ALL VALVES PERMITS, SPECIFICATIONS, AND DRAWINGS.
 3) BOUQUET PERFORMERS INSTRUCTIONS.
 4) DROP ALONG COLUMN LINE.
 5) CONNECT TO COLUMN ALONG TOP OF LAYOUT.
 6) INITIAL DRAWINGS SHALL BE CONFORMANT WITH PERMITS AND SPECIFICATIONS.
 7) INITIAL DRAWINGS SHALL BE CONFORMANT WITH PERMITS AND SPECIFICATIONS.
 8) INITIAL DRAWINGS SHALL BE CONFORMANT WITH PERMITS AND SPECIFICATIONS.
 9) INITIAL DRAWINGS SHALL BE CONFORMANT WITH PERMITS AND SPECIFICATIONS.
 10) INITIAL DRAWINGS SHALL BE CONFORMANT WITH PERMITS AND SPECIFICATIONS.
 11) INITIAL DRAWINGS SHALL BE CONFORMANT WITH PERMITS AND SPECIFICATIONS.
 12) INITIAL DRAWINGS SHALL BE CONFORMANT WITH PERMITS AND SPECIFICATIONS.
 13) INITIAL DRAWINGS SHALL BE CONFORMANT WITH PERMITS AND SPECIFICATIONS.
 14) INITIAL DRAWINGS SHALL BE CONFORMANT WITH PERMITS AND SPECIFICATIONS.
 15) INITIAL DRAWINGS SHALL BE CONFORMANT WITH PERMITS AND SPECIFICATIONS.
 16) INITIAL DRAWINGS SHALL BE CONFORMANT WITH PERMITS AND SPECIFICATIONS.
 17) INITIAL DRAWINGS SHALL BE CONFORMANT WITH PERMITS AND SPECIFICATIONS.
 18) INITIAL DRAWINGS SHALL BE CONFORMANT WITH PERMITS AND SPECIFICATIONS.
 19) INITIAL DRAWINGS SHALL BE CONFORMANT WITH PERMITS AND SPECIFICATIONS.
 20) INITIAL DRAWINGS SHALL BE CONFORMANT WITH PERMITS AND SPECIFICATIONS.

REFRIGERATION PIPING ~ SALES AREA LINESIZING

HANNAFORD SUPERMARKET & PHARMACY
 295 FOREST AVENUE
 PORTLAND, MAINE

Date: MAY, 2015
 Drawn By: PDS
 Checked By: BEI
 Project Mgr: BEI
 Project No:
 Cad File: Portland Refrigeration.dwg
 Graphic Scale: 0 1"

REVISIONS					
NUMBER	DATE	BY	DESCRIPTION	NUMBER	DATE
0	06/19/15		Issued for construction		



BOYKO ENGINEERING

JAMES BOYKO, P.E.
 110 Corham Industrial Parkway
 Corham, Maine 04038
 tel. (207) 856-1900
 fax. (207) 856-1999