



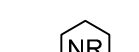



**LEGEND:**

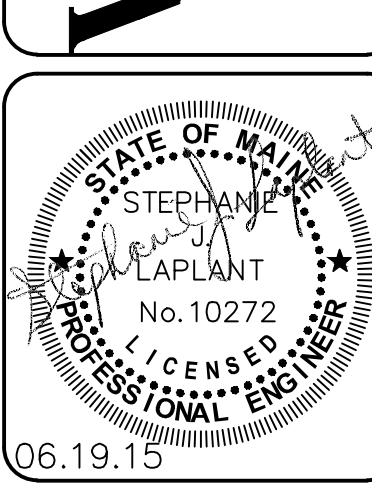
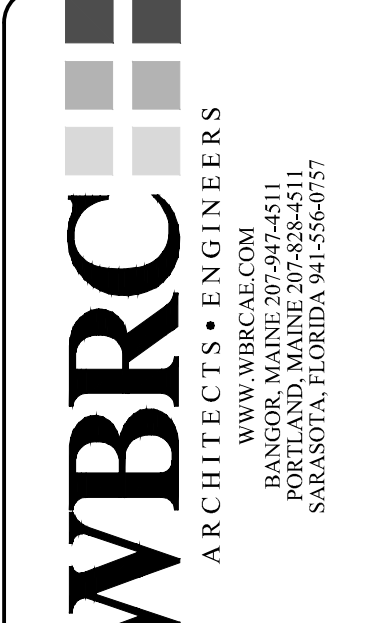
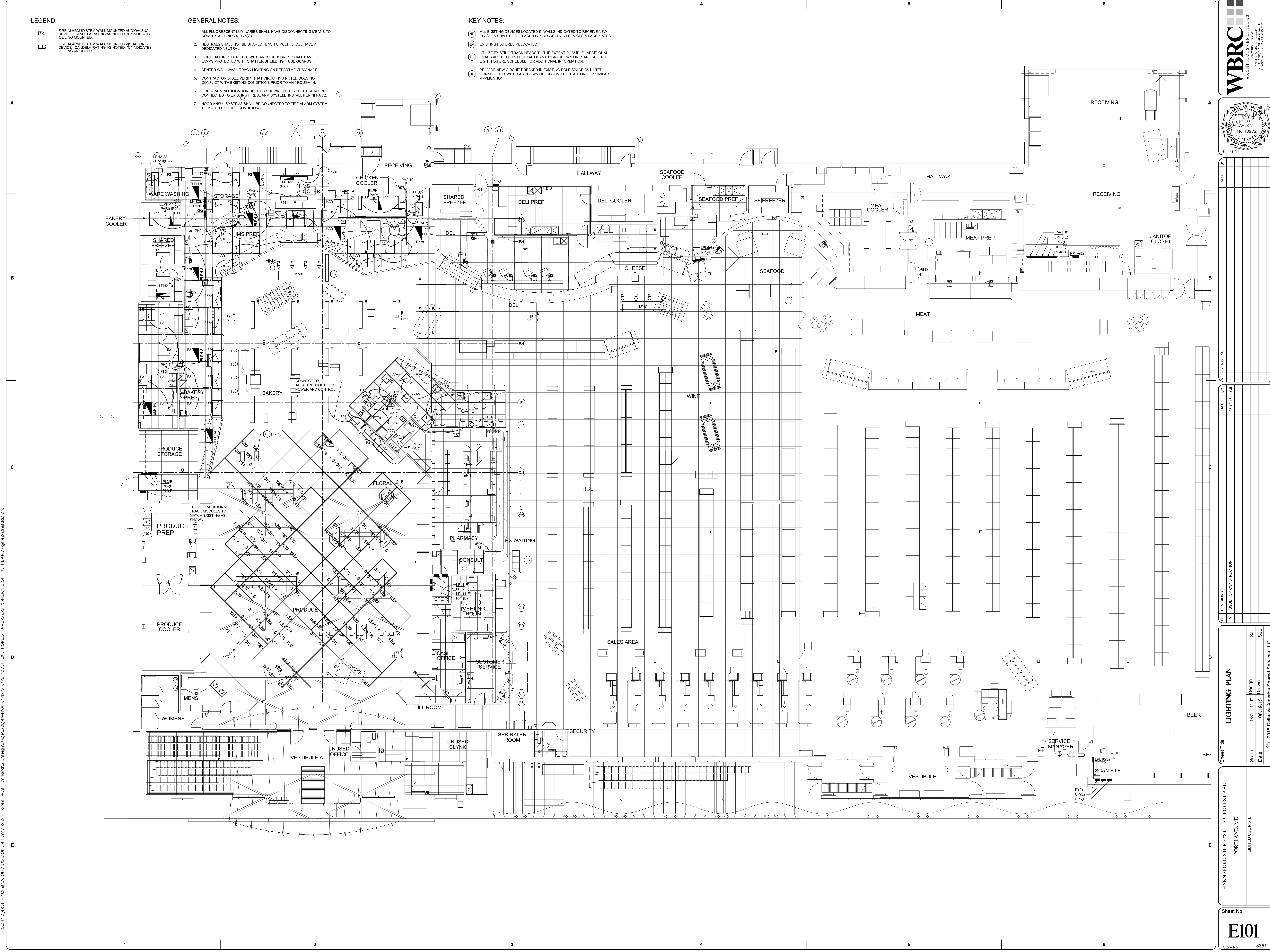
-  FIRE ALARM SYSTEM WALL MOUNTED AUDIO/VISUAL DEVICE. CANDELA RATING AS NOTED. "C" INDICATES CEILING MOUNTED.
-  FIRE ALARM SYSTEM WALL MOUNTED VISUAL ONLY DEVICE. CANDELA RATING AS NOTED. "C" INDICATES CEILING MOUNTED.

**GENERAL NOTES:**

1. ALL FLUORESCENT LUMINARIES SHALL HAVE DISCONNECTING MEANS TO COMPLY WITH NEC 410.75(G).
2. NEUTRALS SHALL NOT BE SHARED. EACH CIRCUIT SHALL HAVE A DEDICATED NEUTRAL.
3. LIGHT FIXTURES DENOTED WITH AN "S" SUBSCRIPT SHALL HAVE THE LAMPS PROTECTED WITH SHATTER SHELINGS (TUBE GUARD).
4. CENTER WALL WASH TRACK LIGHTING ON DEPARTMENT SIGNAGE.
5. CONTRACTOR SHALL VERIFY THAT CIRCUITING NOTED DOES NOT CONFLICT WITH EXISTING CONDITIONS PRIOR TO ANY ROUGH-IN.
6. FIRE ALARM NOTIFICATION DEVICES SHOWN ON THIS SHEET SHALL BE CONNECTED TO EXISTING FIRE ALARM SYSTEM. INSTALL PER NFPA 72.
7. HOOD ANSUL SYSTEMS SHALL BE CONNECTED TO FIRE ALARM SYSTEM TO MATCH EXISTING CONDITIONS.

**KEY NOTES:**

-  ALL EXISTING DEVICES LOCATED IN WALLS INDICATED TO RECEIVE NEW FINISHES SHALL BE REPLACED IN KIND WITH NEW DEVICES & FACEPLATES.
-  EXISTING FIXTURES RELOCATED.
-  UTILIZE EXISTING TRACK HEADS TO THE EXTENT POSSIBLE. ADDITIONAL HEADS ARE REQUIRED. TOTAL QUANTITY AS SHOWN ON PLAN. REFER TO LIGHT FIXTURE SCHEDULE FOR ADDITIONAL INFORMATION.
-  PROVIDE NEW CIRCUIT BREAKER IN EXISTING POLE SPACE AS NOTED. CONNECT TO SWITCH AS SHOWN OR EXISTING CONTACTOR FOR SIMILAR APPLICATION.



NO.	REVISIONS	DATE	BY	FOR
0	ISSUE FOR CONSTRUCTION	06/19/15	SJL	

NO.	REVISIONS	DATE	BY	FOR
0	ISSUE FOR CONSTRUCTION	06/19/15	SJL	

Sheet Title	<b>LIGHTING PLAN</b>
Scale	1/8" = 1'-0" Design
Date	06/19/15 Drawn
	SJL
	SJL
© 2015 Delhaize America Shared Services LLC	

Sheet No.	<b>E101</b>
LIMITED USE NOTE: HANNAFORD STORE #8351, 295 FOREST AVE, PORTLAND, ME	
Scale	1/8" = 1'-0" Design
Date	06/19/15 Drawn
	SJL
	SJL
© 2015 Delhaize America Shared Services LLC	

Jun 14, 2015 - 3:02pm  
 T:\02 Projects - Home\000-0000000114 Hannaford - Forest Ave Portland\02 Design\Lighting\MANUFACTURE STORE #8351\_295 FOREST AVE\020715-ELD LIGHTING PLAN.dwg\delhaize.sjlaplant