

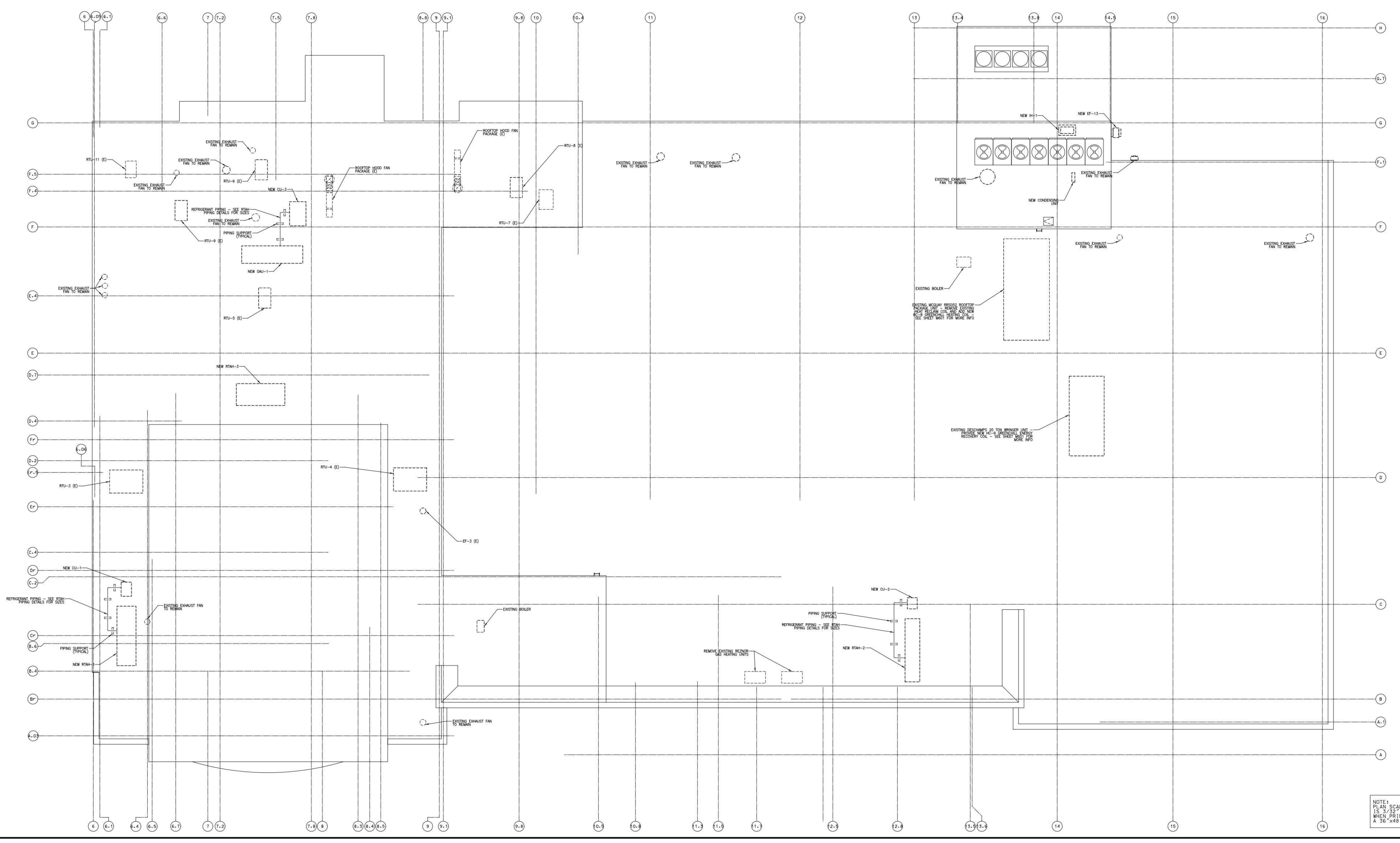
11/02/11 9:02:06 AM

- NOTES:
1. REFRIGERANT PIPING SHALL SLOPE 1" PER 20' TOWARD THE COMPRESSOR.
 2. SUPPORT REFRIGERANT PIPING ON DUNNAGE WITH SPACING AS SCHEDULED BELOW.
 3. SUPPORT DUNNAGE SHALL BE PRESURE TREATED NOMINAL 4 x 4 MINIMUM. SEE ARCHITECTURAL ROOF DETAILS FOR MEMBRANE NEAR PROTECTORS.
 4. DUNNAGE SHALL BE SHIMMED OR TAPERED LUMBER TO MATCH ROOF SLOPE AND MAINTAIN A LEVEL TOP SURFACE TO PROPERLY SLOPE PIPING AND MAINTAIN EQUIPMENT LEVEL AND PLUMB.
 5. SEE DRAWING M001 FOR REFRIGERANT PIPING DETAILS. REFRIGERANT PIPING BY HVAC CONTRACTOR.
 6. SEE DRAWING M001 FOR ROOF TOP UNITS CONDENSATE PIPING DETAIL. CONDENSATE PIPING BY HVAC CONTRACTOR.
 7. SHOW ROOF CURBS SO THAT FANS, RTM'S AND CAU ARE LEVEL AND PLUMB.

PPE SUPPORT SCHEDULE

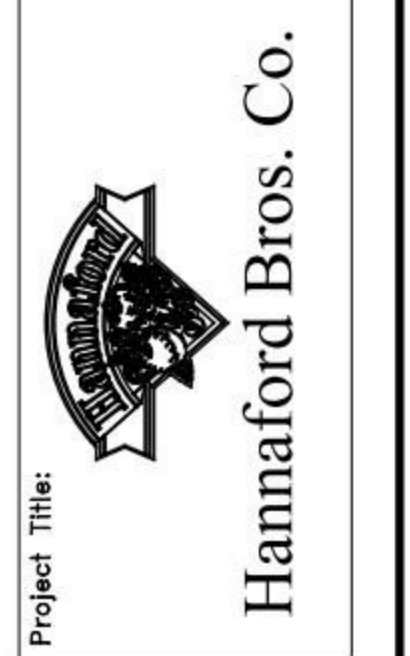
BASED ON ACR ASTM B300 COPPER TUBING

PIPE SIZE INCHES	MAX SUPPORT SPACING FEET
3/8	4
1/2	5
3/4	6
1 1/8	6
1 3/8	7
1 5/8	8



No.	Date	Revision
2	11/16/11	ISSUED FOR CONSTRUCTION
1	10/21/11	ISSUED FOR HANNAFORD DOOR REVIEW
0	09/29/11	ISSUED FOR HANNAFORD DOOR REVIEW

REMODEL HANNAFORD
 SUPERMARKET & PHARMACY
 STORE #8351 - 295 FOREST AVENUE
 PORTLAND, MAINE 04101



Project Title:
JACOBS
 JACOBS ENGINEERING GROUP, INC. 24-28 E. COLLETT ST.
 PORTLAND, MAINE 04101
 5700 Major Business, Suite 400
 Portland, ME 04101
 Phone: 407-495-2001 Fax: 407-495-1199

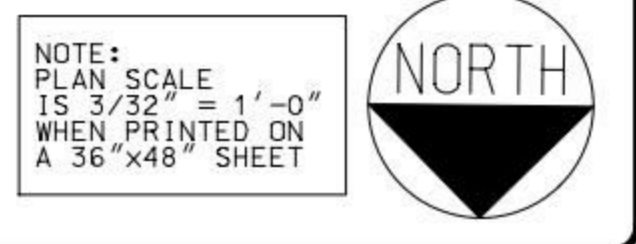
Prepared By:

Scale:

MECHANICAL ENGINEER OF RECORD
 NAME: KEVIN EUGA, P.E.
 MAINE REGISTERED P.E. 12608

Mechanical Roof Plan
 Scale: 3/32" = 1'-0"
 Date: 10/21/11
 Designed by: KEUGA
 Drawn by: KEUGA
 Checked by: KEUGA

Drawing No.
M105
 Project No.
FFYR0300
 IBC-PORTLAND, ME



NOTES:
 PLAN SCALE = 3/32" = 1'-0"
 WHEN PRINTED ON A 36" x 48" SHEET