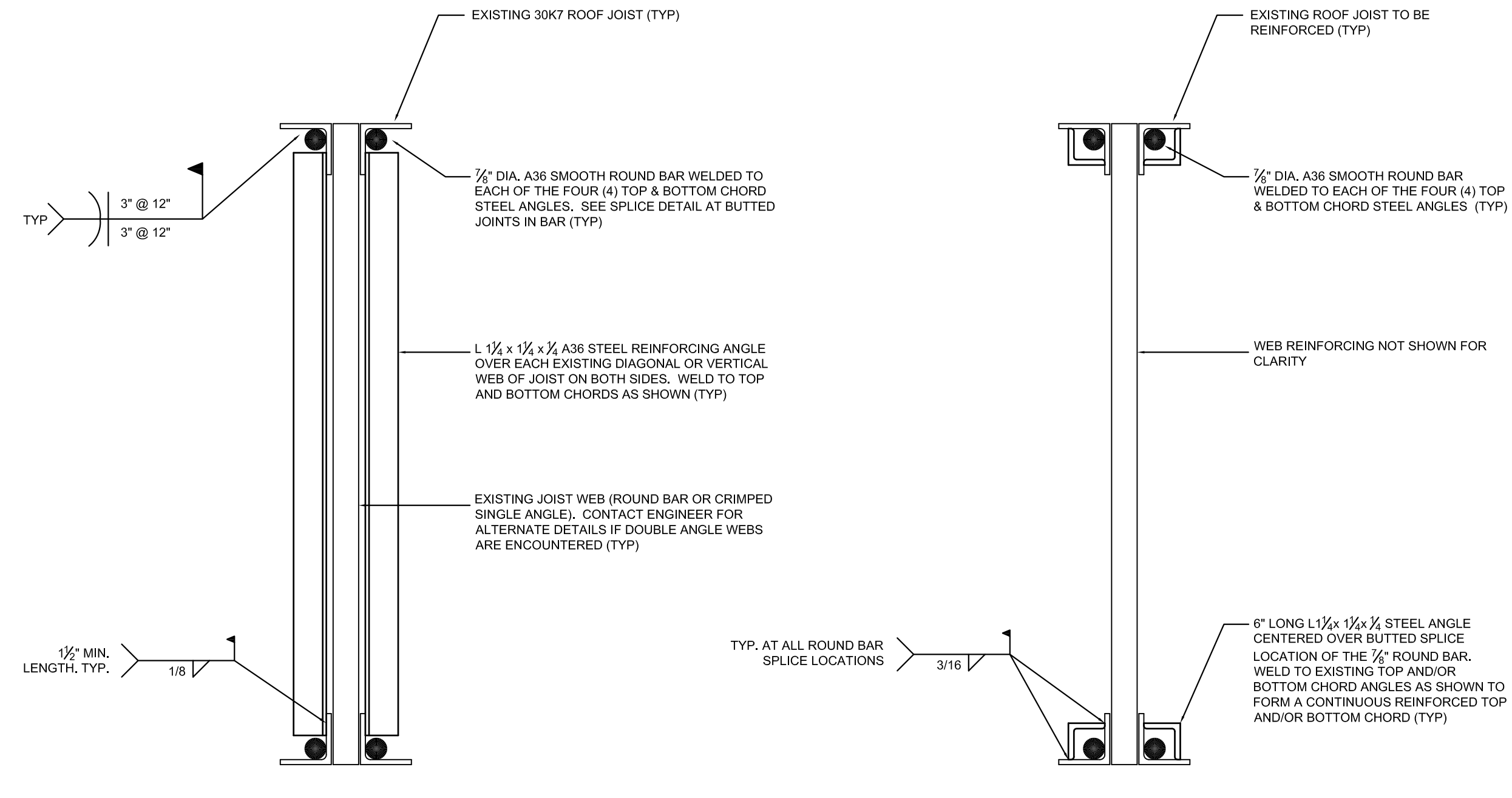
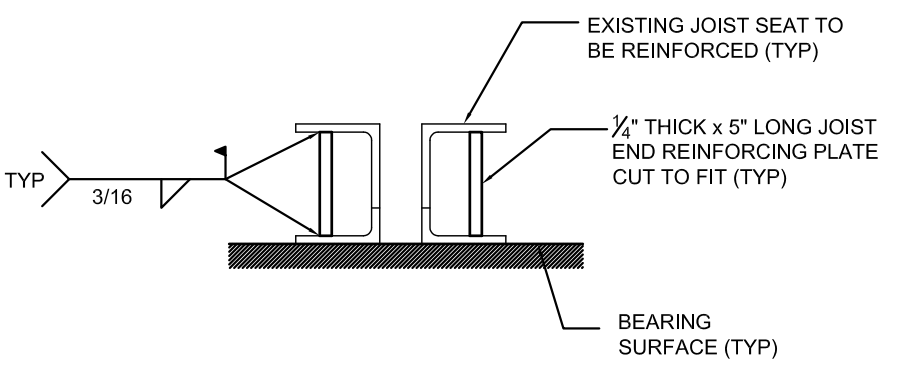


1 SCHEMATIC ELEVATION VIEW OF A TYPICAL ROOF JOIST TO BE REINFORCED
Scale: 1/4" = 1'-0"



2 SECTION THROUGH ROOF JOIST TO BE REINFORCED
Scale: 3" = 1'-0"

3 SPLICE DETAIL FOR ROUND REINFORCING BARS OF TOP AND BOTTOM CHORDS
Scale: 3" = 1'-0"



4 SCHEMATIC JOIST END SEAT REINFORCEMENT
Scale: 2" = 1'-0"

DATE	NO.	DESCRIPTION
11/18/11	0	ISSUED FOR CONSTRUCTION
		Revision

REMODEL HANNAFORD
SUPERMARKET & PHARMACY
STORE #8351 - 295 FOREST AVENUE
PORTLAND, MAINE 04101

Project Title:
Hannaford Bros. Co.

Prepared By:
One Autumn Street
Portland, ME 04103
Phone: (603) 433-5839
Fax: (603) 433-5811
www.hannaford.com

Associates, Inc.
Consulting Structural Engineers



Seal:
11/18/11

STRUCTURAL ENGINEER OF RECORD: JSN Associates, Inc.
Hossein Salehkhohi, P.E.
5531

MAINE LICENSED ENGINEER:

ROOF MODIFICATIONS & MISCELLANEOUS STRUCTURAL DETAILS

Designed by : Hossein Salehkhohi
Drawn by : Hossein Salehkhohi
Checked by : Hossein Salehkhohi

Scale : AS NOTED
Date : 10/18/11

Drawing No.
S502
Project No.