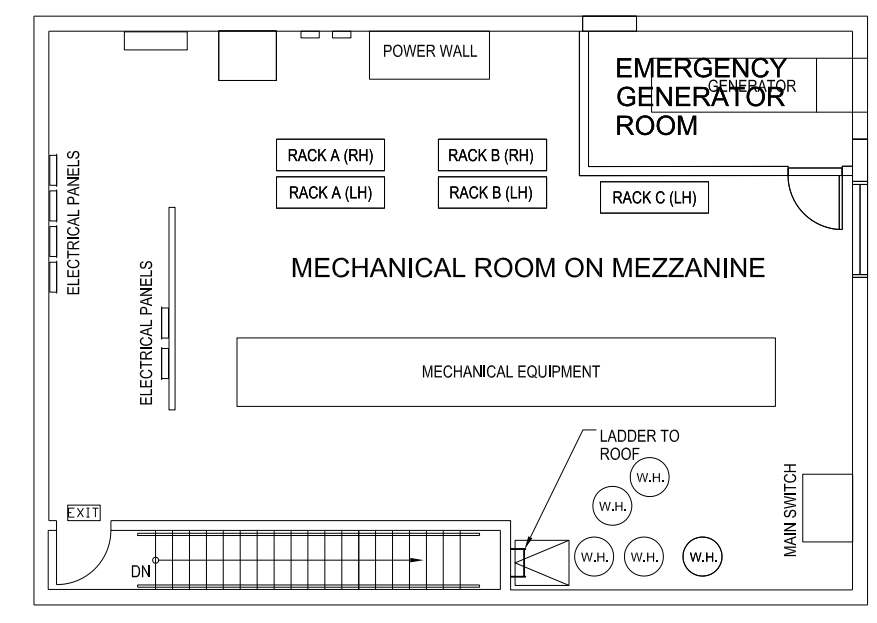


Glycol Distribution Header Schedule

Unit Served	Control Valve	Supply/Return
BC-1,2,3	none	2"Sch10 (main)
BC-1	Bellme B240 with on/off control	1-1/2"Sch10 (branch)
BC-2	Bellme B225 with on/off control	1"Sch10 (branch)
BC-3	Bellme B225 with on/off control	1"Sch10 (branch)
CAU-1	Bellme B278 with 2-10VOC control	3"Sch10
RTAH-3	none	2"Sch10
RTAH-1	Bellme B254 with on/off control	2"Sch10
RTAH-2	Bellme B206 with on/off control	1-1/2"Sch10
Water Mchdwy	none	3"Sch10
Exit Decampr	none	3"Sch10
WSP	none	2"Sch10

Control valve actuator specifications:
Mount valves at heating coil per R3-1 detail.
100VAC covers requirement
with NEMA-4 enclosure



Glycol Main, supplied by refrigeration contractor:
#3PS-Sch10 Supply
#3PS-Sch10 Return
Connect to Hydronic Modules A1, A2, B1, B2, C with 3"PS Supply & Return
Install 2" connections for Baler Loop.

Glycol Distribution Header, supplied by refrigeration contractor:
1) Control header in existing machine room in location approved by Hannaford Engineering.
2) Route piping thru low point and penetrate roof per Hannaford instructions.
3) See Glycol Distribution Header Schedule for graphics and valve actuator details.
4) Slope piping from coil to header at 1/4" per 20feet.
5) Install drain valves at low point of piping.

BOYKO ENGINEERING
 JAMES BOYKO, P.E.
 110 Gorham Industrial Parkway
 Gorham, Maine 04038
 tel. (207) 856-1900
 fax. (207) 856-1999

REVISIONS

NUMBER	DATE	DESCRIPTION
0	11/18/11	Issue for construction

Date: AUGUST, 2011
 Drawn By: PDS
 Checked By: BEI
 Project Mgr: BEI
 Project No: 0
 11/18/11
 0
 1" = 1'-0"
 Graphic: 0
 1" = 1'-0"
 © January 2011, James Boyko, Inc.

**GREENHILL
 GLYCOL SYSTEM
 PIPING LAYOUT**
 HANNAFORD SUPERMARKET & PHARMACY No.8351
 295 FOREST AVENUE
 PORTLAND, MAINE 04101

R3-2

A1
 1/8" = 1'-0"