

A

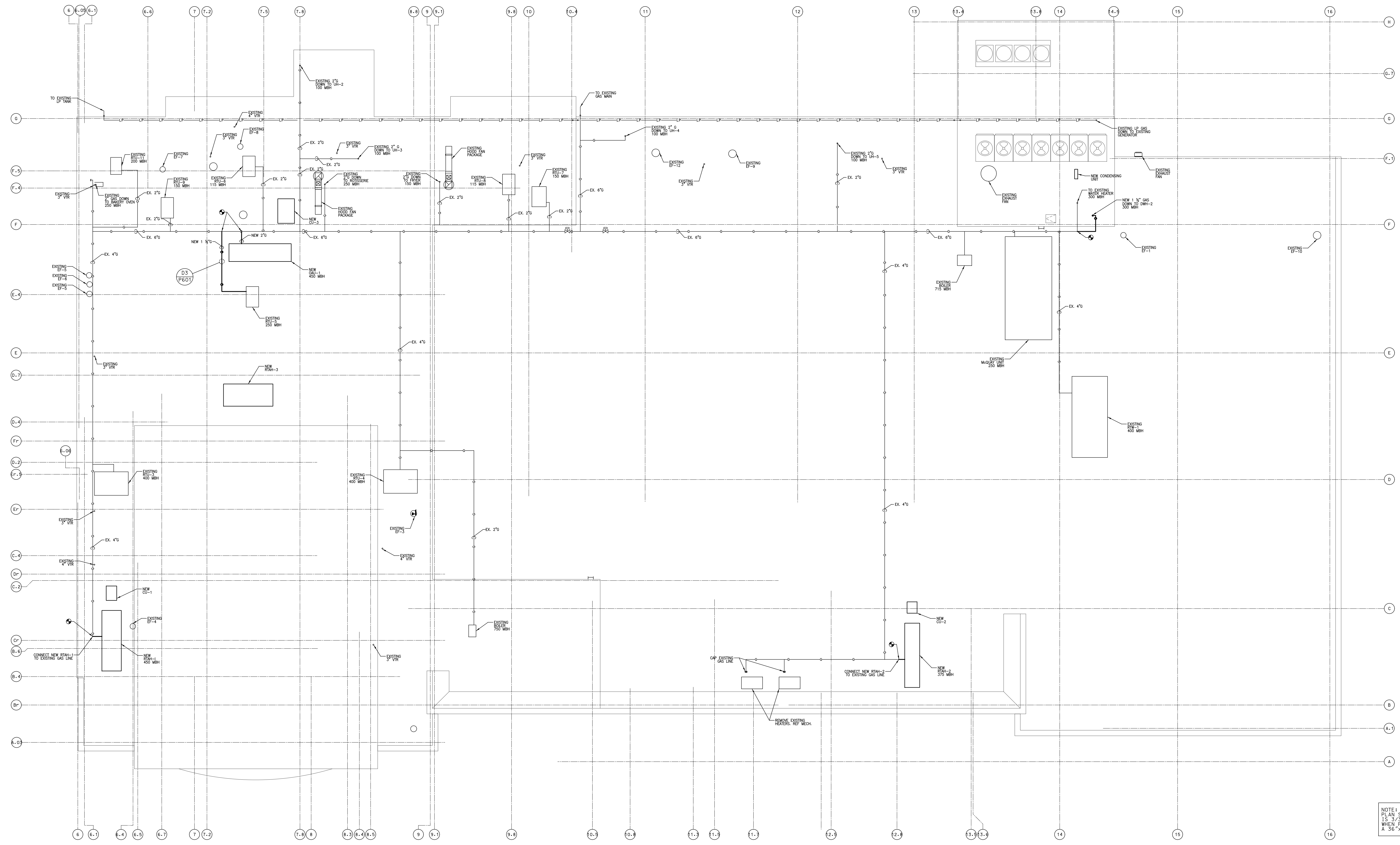
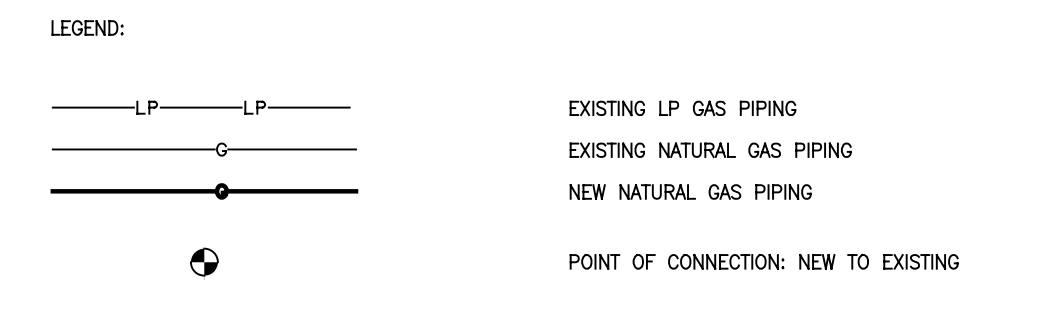
B

C

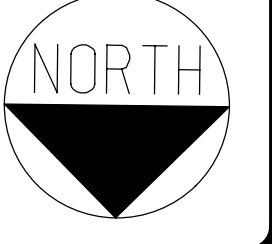
D

E

- GENERAL NOTES:
- PIPE ANCHORS SHALL BE WELDED TO THE STRUCTURE BELOW THE ROOF DECK AND FLASHED WEATHER TIGHT TO THE ROOF MEMBRANE.
 - PIPE ALIGNMENT GUIDES SHALL BE FIBERGLASS MODEL PG FOR PIPE SIZES INDICATED, WITH SUPPORT AS DETAIL ON DRAWING PAGE 1.
 - SUPPORT DUNNAGE SHALL BE PRESSURE TREATED NOMINAL 4 x 4 MINIMUM. SEE ARCHITECTURAL ROOF DETAILS FOR WEATHERING NEAR PROTECTION.
 - FUEL GAS PIPING SHALL BE PAINTED OSHA SAFETY YELLOW WITH A CORROSION-INHIBITING PAINT. SEE SPEC SECTION 091123.

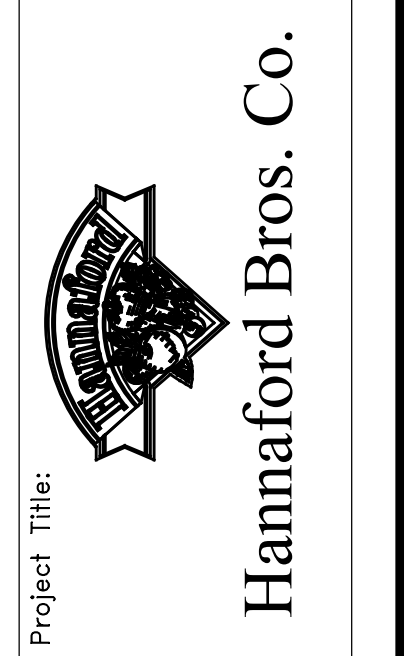


NOTE: SCALE
 PLAN 1/8" = 1'-0"
 WHEN PRINTED ON
 A 36" x 48" SHEET



No.	Date	Revision
2	11/16/11	ISSUED FOR CONSTRUCTION
1	10/21/11	ISSUED FOR HANNAFORD 100% REVIEW
0	09/26/11	ISSUED FOR HANNAFORD 60% REVIEW

REMODEL HANNAFORD
 SUPERMARKET & PHARMACY
 STORE #8351 - 295 FOREST AVENUE
 PORTLAND, MAINE 04101



Project Title:
JACOBS
 JACOBS ENGINEERING GROUP, INC.
 5700 Major Boulevard, Suite 400
 Portland, ME 04103-2001
 Phone: 407-603-5200 Fax: 407-603-5195

Prepared By:
 Swat:
 MECHANICAL ENGINEER OF RECORD
 NAME: KEVIN EUGA, P.E.
 MAINE REGISTERED PEI: 12808

PLUMBING
 ROOF PLAN
 Scale: 3/32"=1'-0"
 Date: 10/21/11
 Designed by: J. STAMPER
 Drawn by: J. STAMPER
 Checked by: K. EUGA

Drawing No.
P104
 Project No.
PRYR0300
 HBC-PORTLAND, ME