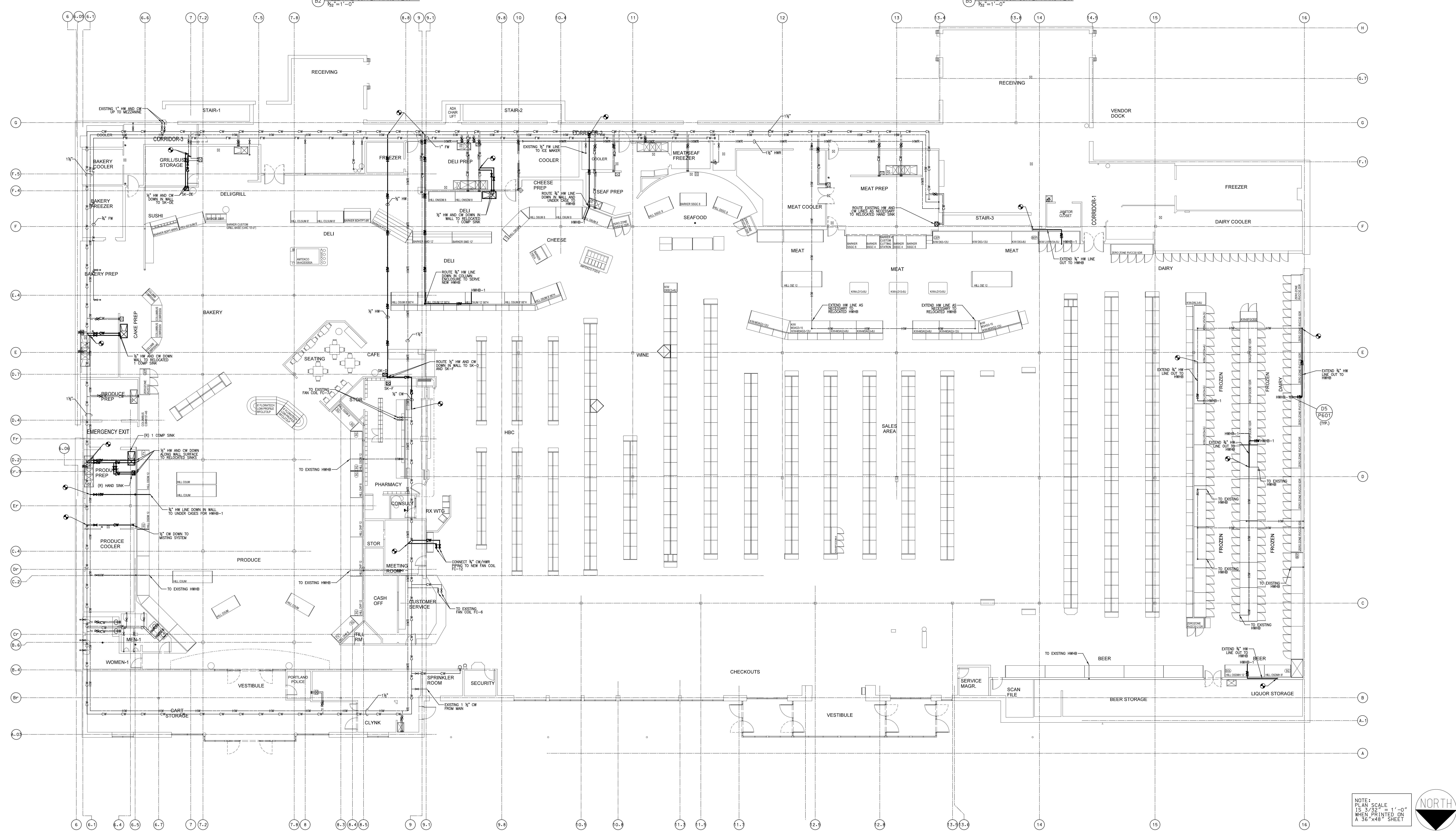
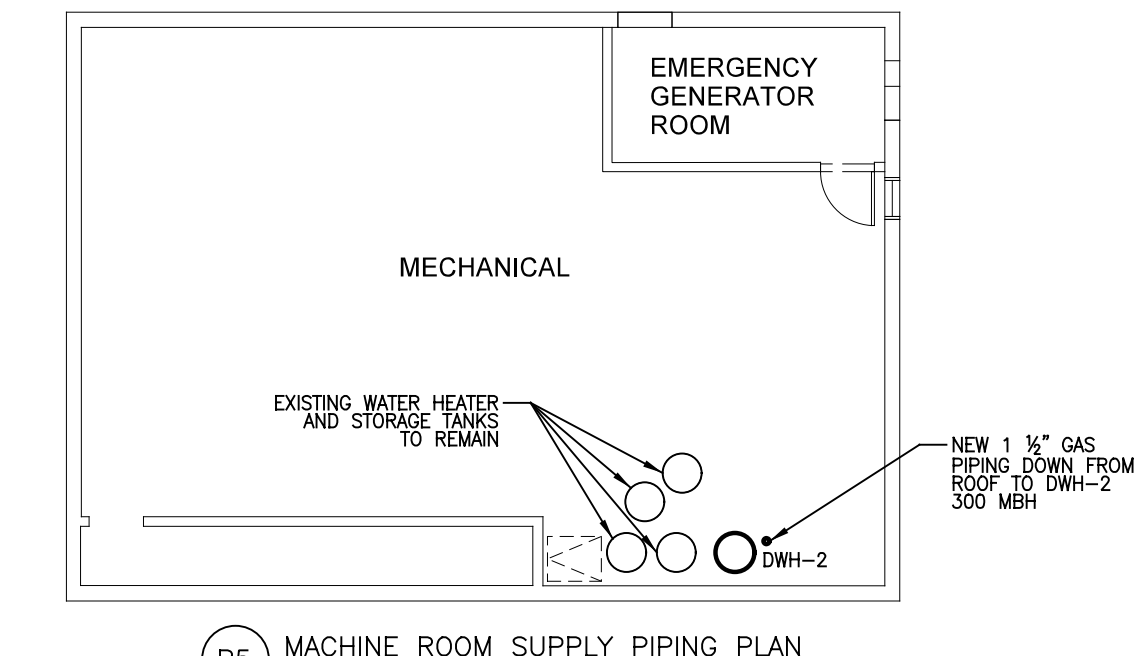
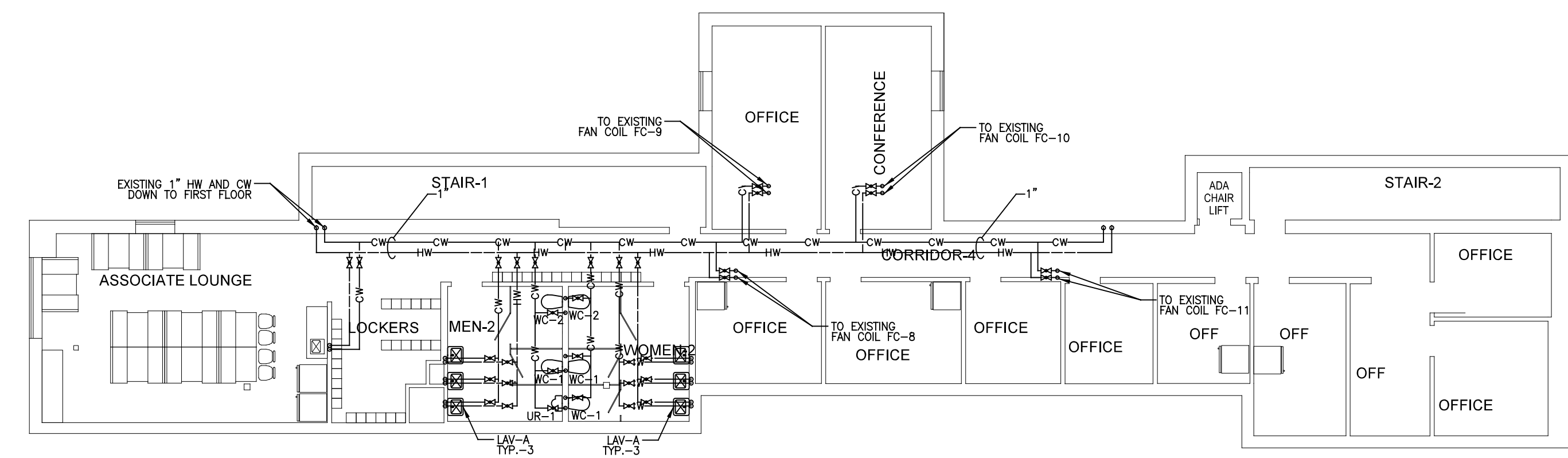
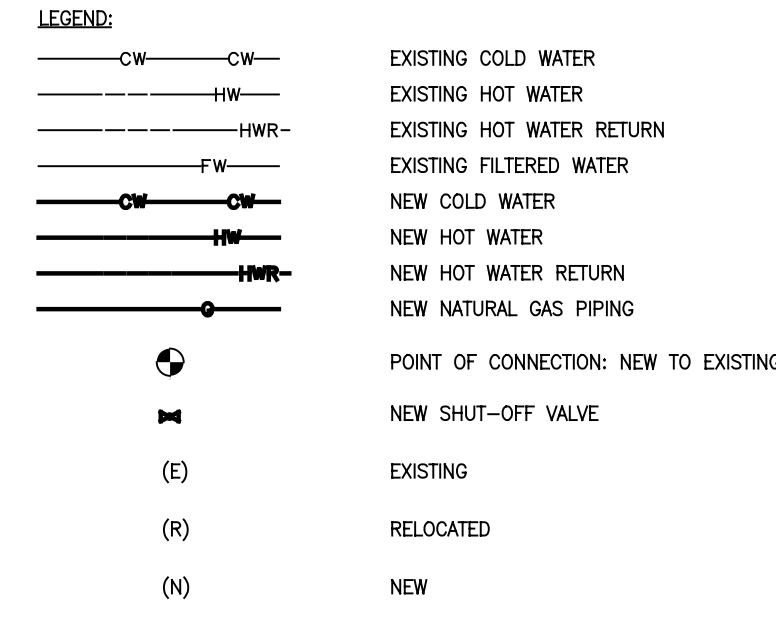
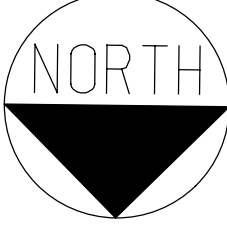


A
B
C
D
E

- GENERAL NOTES**
1. FOR BELOW SLAB DWY PIPING SEE P101.
 2. FOR ABOVE SLAB CONDENSATE AND SANITARY PIPING SEE P102.
 3. CONNECT NEW MECHANICAL RESTROOM FIXTURES TO EXISTING PLUMBING AS NECESSARY.
 4. PREPARE ALL EXISTING PREP COMPARTMENT AND HAND SINK ADVISORS WITH NEW LOW FLOW WATER SENSORS REFER TO SPECIFICATION SECTION 22000 FOR MODEL AND FLOW RATE REQUIREMENTS.
 5. REPLACE ALL EXISTING PRESSURE VALVES TO PREP AREAS WITH NEW LOW FLOW PRESSURE VALVES. REFER TO SPECIFICATION SECTION 22000 FOR MODEL AND FLOW RATE REQUIREMENTS.
 6. PROVIDE AND INSTALL NEW GAS FRESH WATER HEATER IN SPACES WITH EXISTING GAS FRESH WATER HEATER. VERIFY EXISTING GAS FRESH WATER HEATER IS IN COMPLIANCE WITH ALL APPLICABLE CODES. PROVIDE NEW GAS FRESH WATER HEATER WITH EXISTING GAS FRESH WATER HEATER. VERIFY EXISTING GAS FRESH WATER HEATER IS IN COMPLIANCE WITH ALL APPLICABLE CODES. PROVIDE NEW GAS FRESH WATER HEATER WITH EXISTING GAS FRESH WATER HEATER. VERIFY EXISTING GAS FRESH WATER HEATER IS IN COMPLIANCE WITH ALL APPLICABLE CODES. PROVIDE NEW GAS FRESH WATER HEATER WITH EXISTING GAS FRESH WATER HEATER. VERIFY EXISTING GAS FRESH WATER HEATER IS IN COMPLIANCE WITH ALL APPLICABLE CODES.

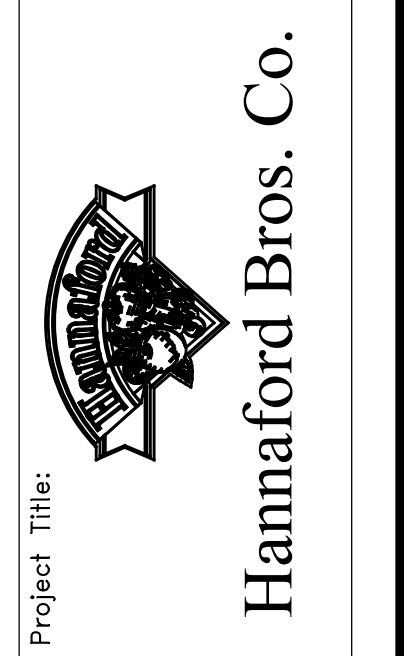


NOTE: SCALE
1" = 3'-0"
WHEN PRINTED ON
A 36" X 48" SHEET



No.	Date	Revision
2	11/19/11	ISSUED FOR CONSTRUCTION
1	10/21/11	ISSUED FOR HANNAFORD 100% REVIEW
0	09/26/11	ISSUED FOR HANNAFORD 100% REVIEW

**REMODEL HANNAFORD
SUPERMARKET & PHARMACY**
STORE #8351 - 295 FOREST AVENUE
PORTLAND, MAINE 04101



Project Title:
JACOBS
JACOBS ENGINEERING GROUP, INC. 04-001908
100 Water Street, Suite 200
Portland, Maine 04101
Phone: 407-503-5001 Fax: 407-503-5195

Prepared By:
Swat:
MECHANICAL ENGINEER OF RECORD
NAME: KEVIN EUGA, P.E.
MAINE REGISTERED PE# 12608

PLUMBING DOMESTIC WATER
SUPPLY PIPING PLAN
Scale: 3/32"=1'-0"
Date: 10/21/11
Designed by: J. STAMPER
Drawn by: J. STAMPER
Checked by: K. EUGA

Drawing No.
P103
Project No.
FRYR0300
HBC-PORTLAND, ME