

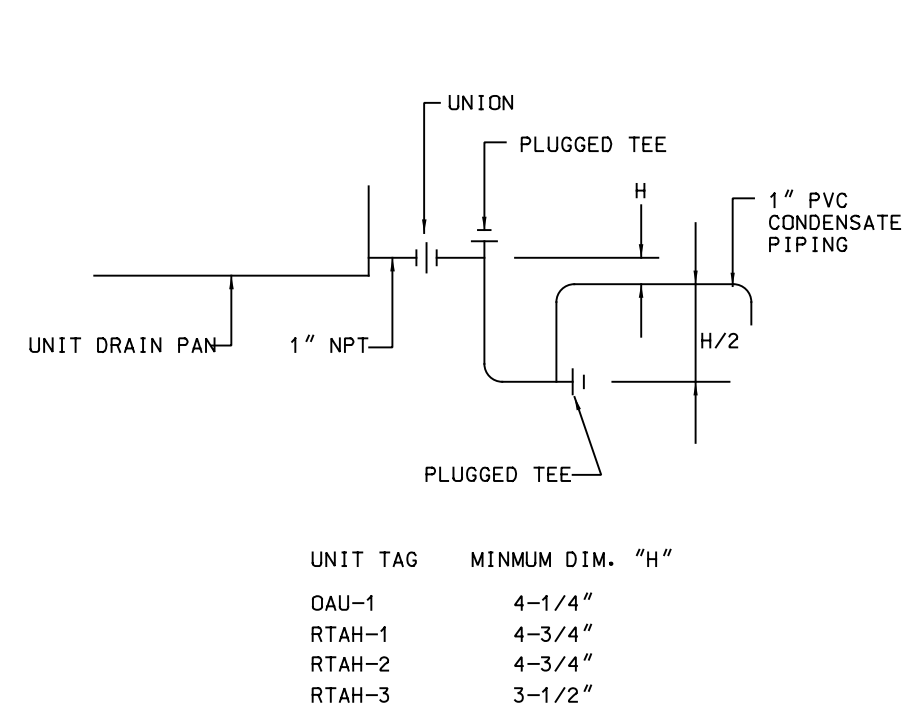
A

B

C

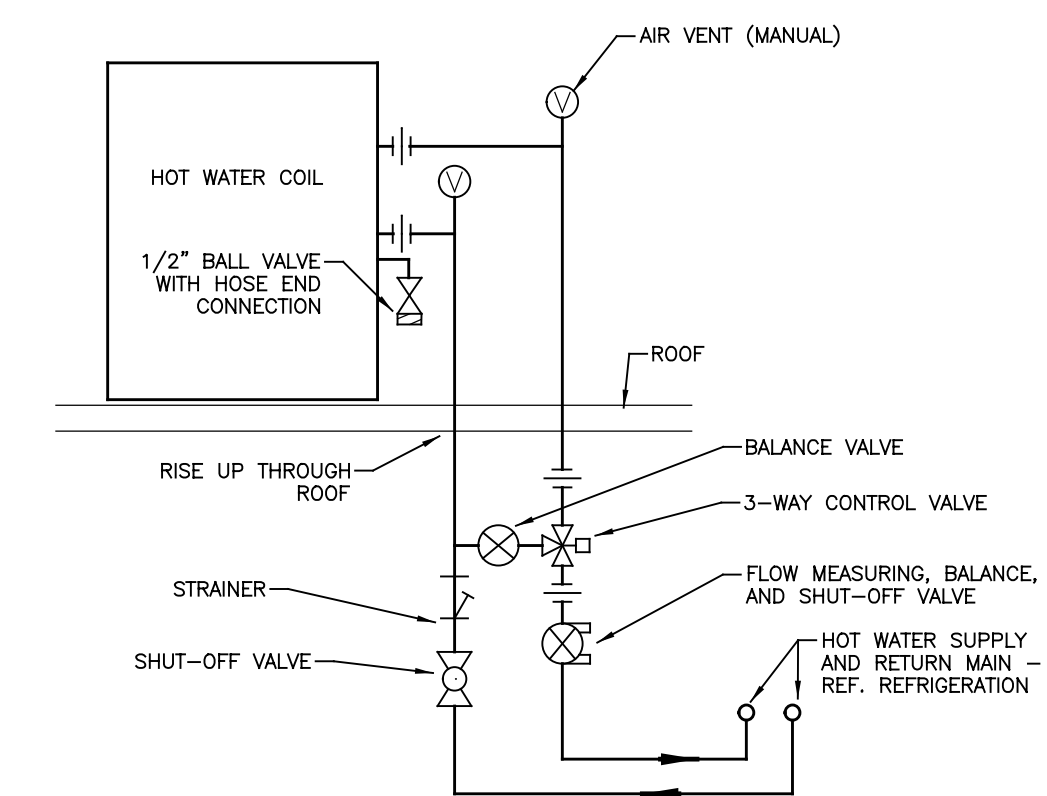
D

E

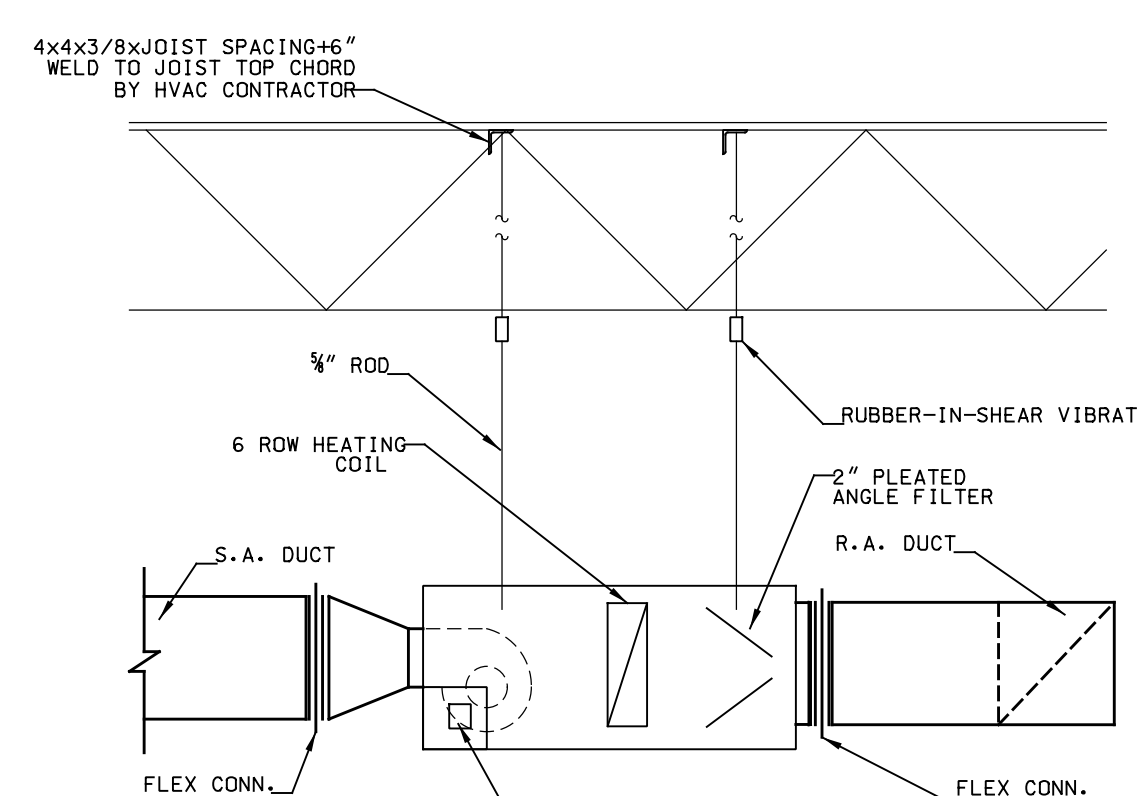


**C2** ROOF-TOP UNIT CONDENSATE DRAIN DETAIL  
SCALE: NOT TO SCALE

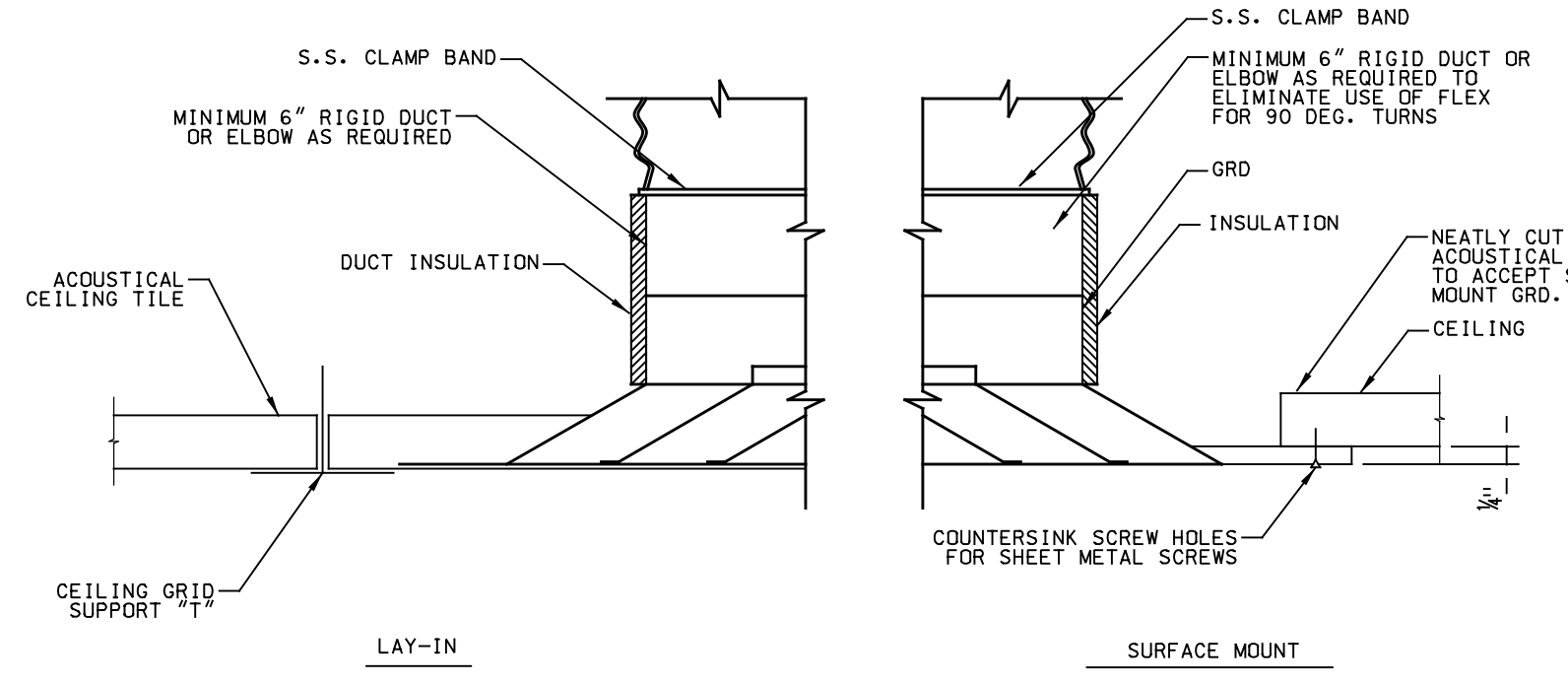
UNIT TAG	MINIMUM DIM. "x"
DAU-1	4-1/4"
RTAH-1	4-3/4"
RTAH-2	4-3/4"
RTAH-3	3-1/2"



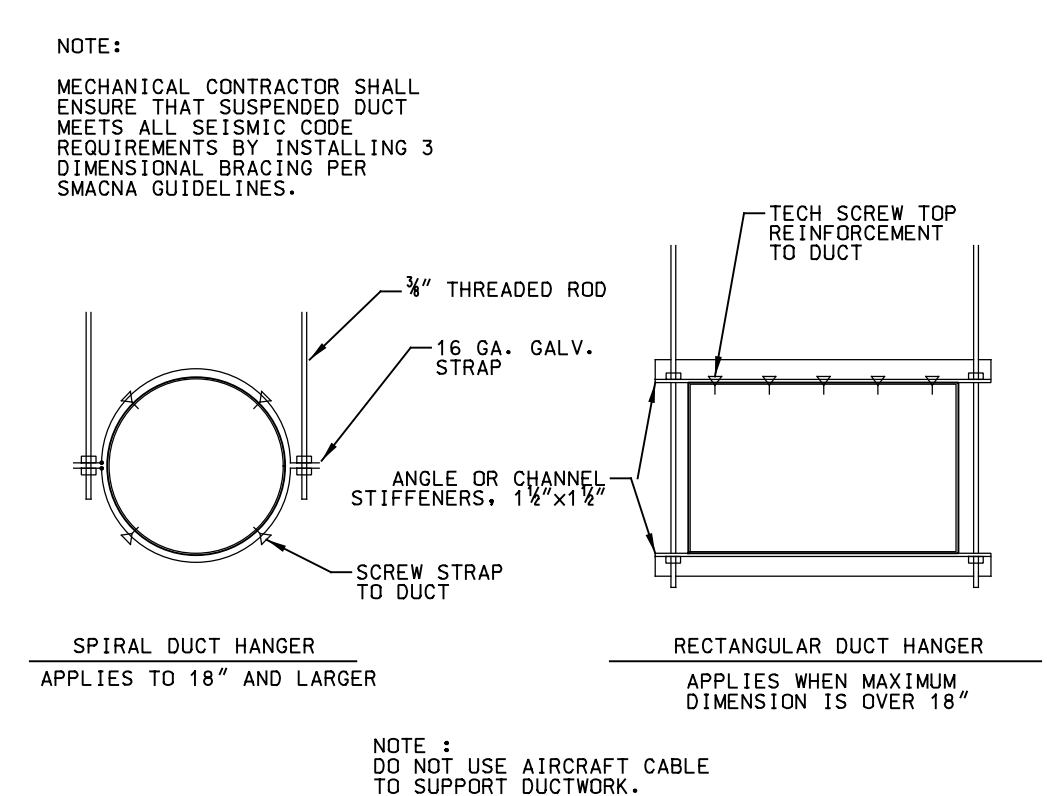
**C3** RTAH/DAU HOT WATER COIL PIPING DETAIL  
SCALE: NOT TO SCALE



**C4** BLOWER COIL UNIT CONFIGURATION  
SCALE: NOT TO SCALE



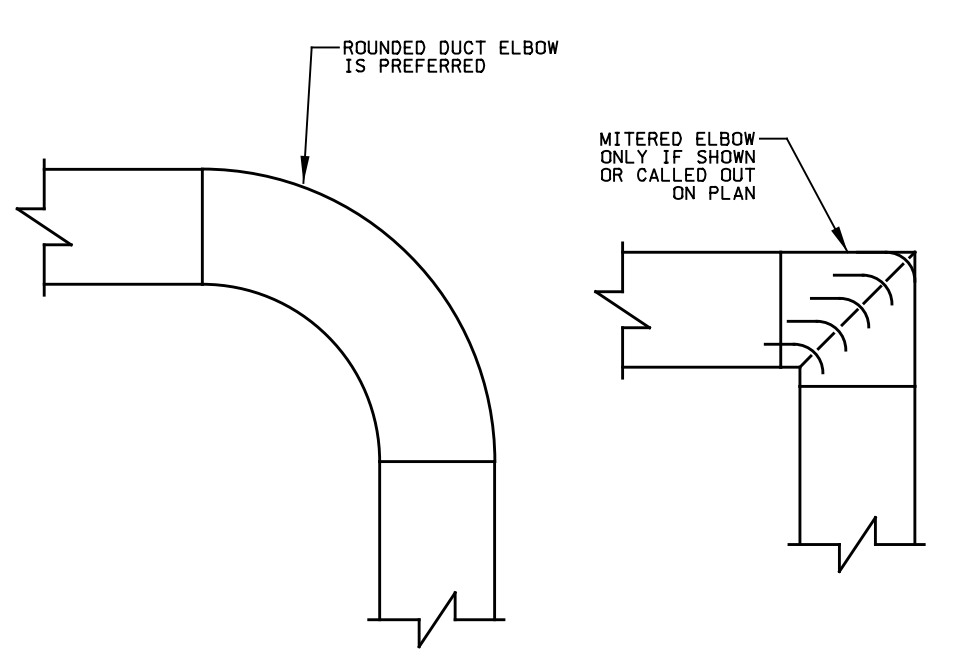
**C5** GRD MOUNTING DETAIL  
SCALE: NOT TO SCALE



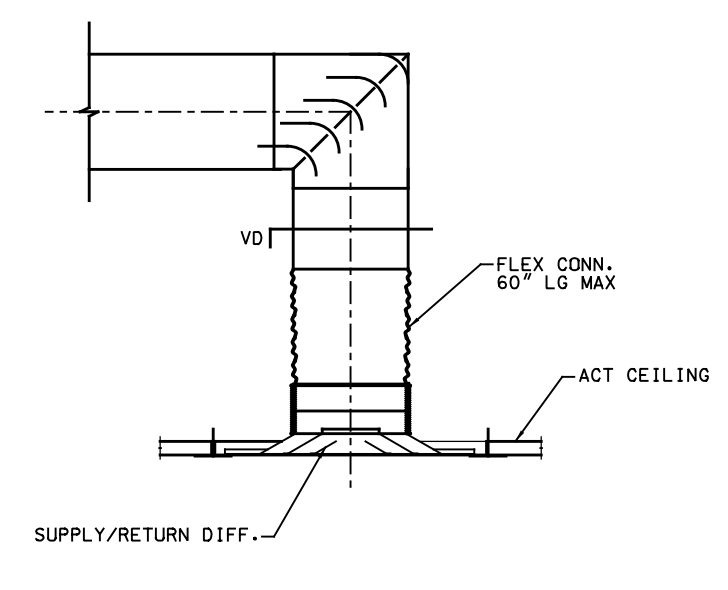
**C6** DUCT HANGING DETAIL  
SCALE: NOT TO SCALE

NOTE: MECHANICAL CONTRACTOR SHALL ENSURE THAT SUSPENDED DUCT MEETS ALL SECTORS REQUIREMENTS BY INSTALLING 3 DIMENSIONAL BRACING PER SMACNA GUIDELINES.

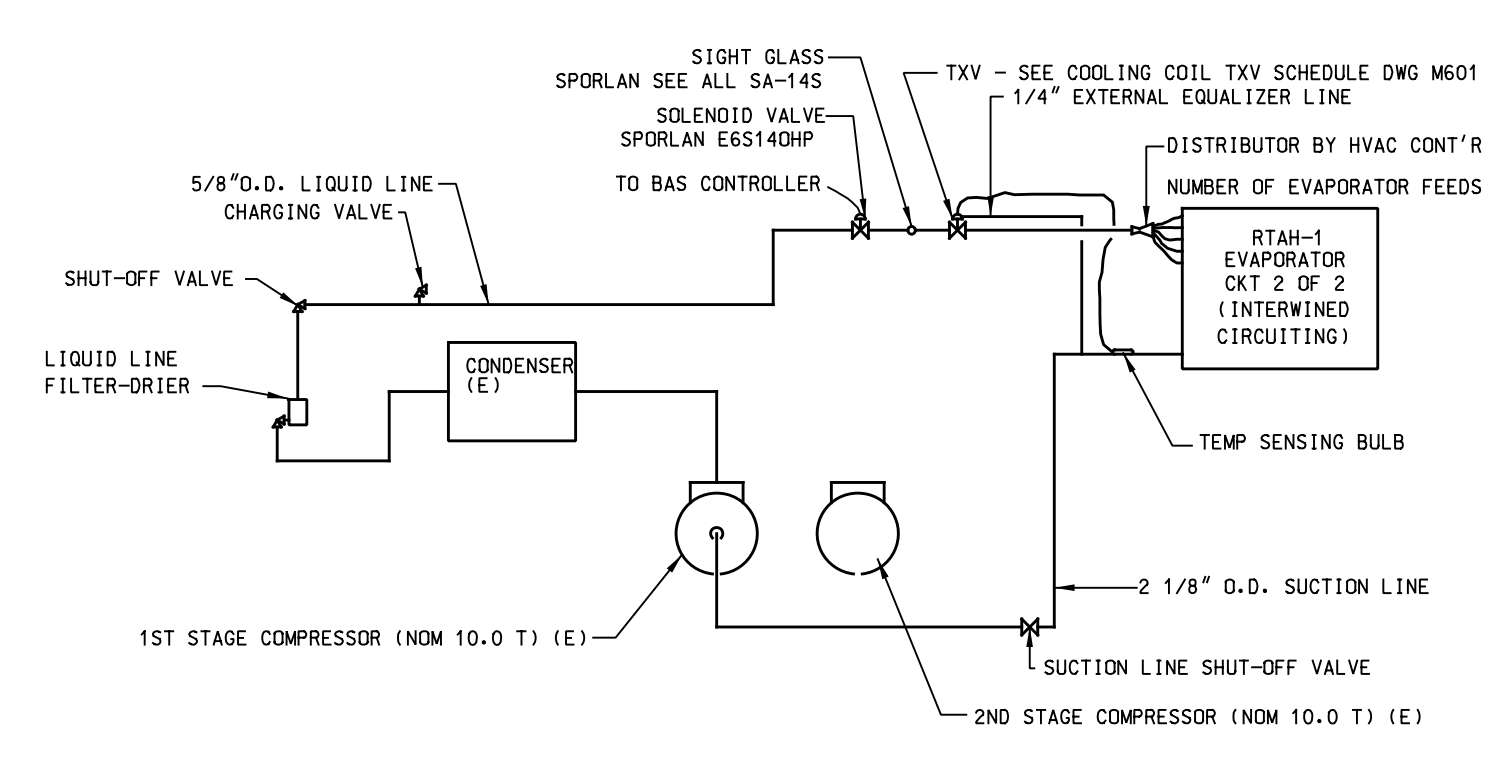
NOTE: DO NOT USE AIRRAFT CABLE TO SUPPORT DUCTWORK.



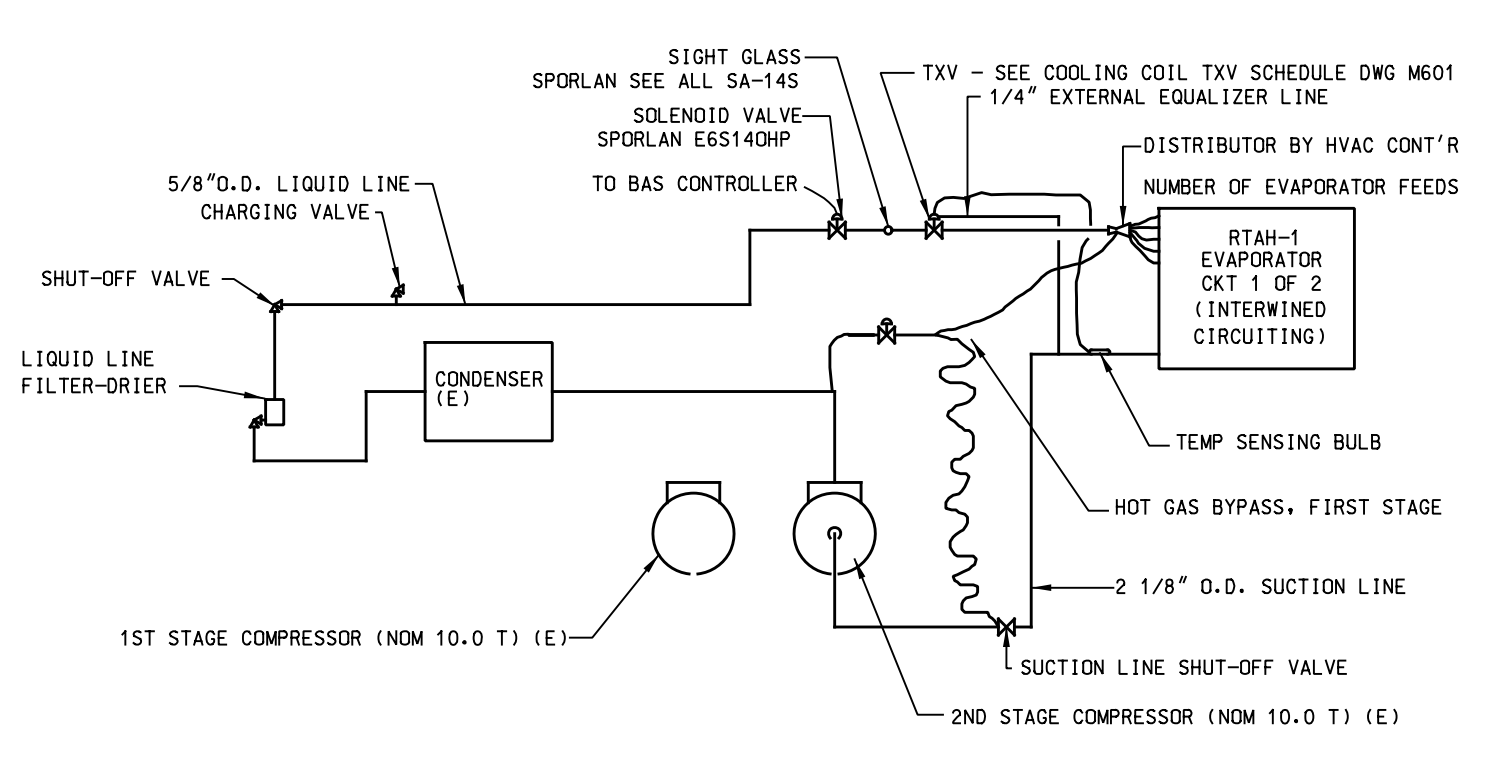
**D3** DUCT ELBOWS DETAIL  
SCALE: NOT TO SCALE



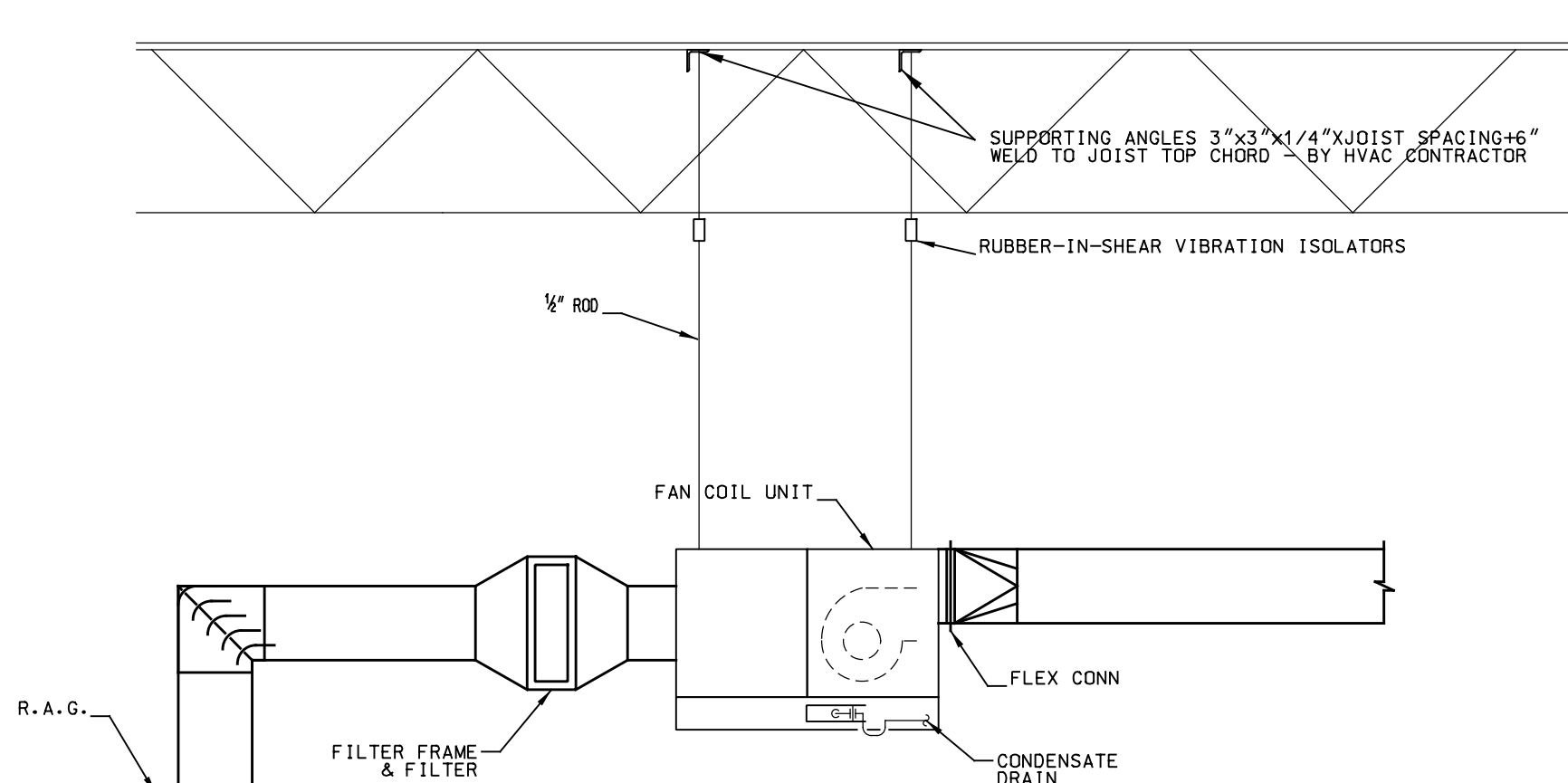
**D4** FLEX CONN. DETAIL  
SCALE: NOT TO SCALE



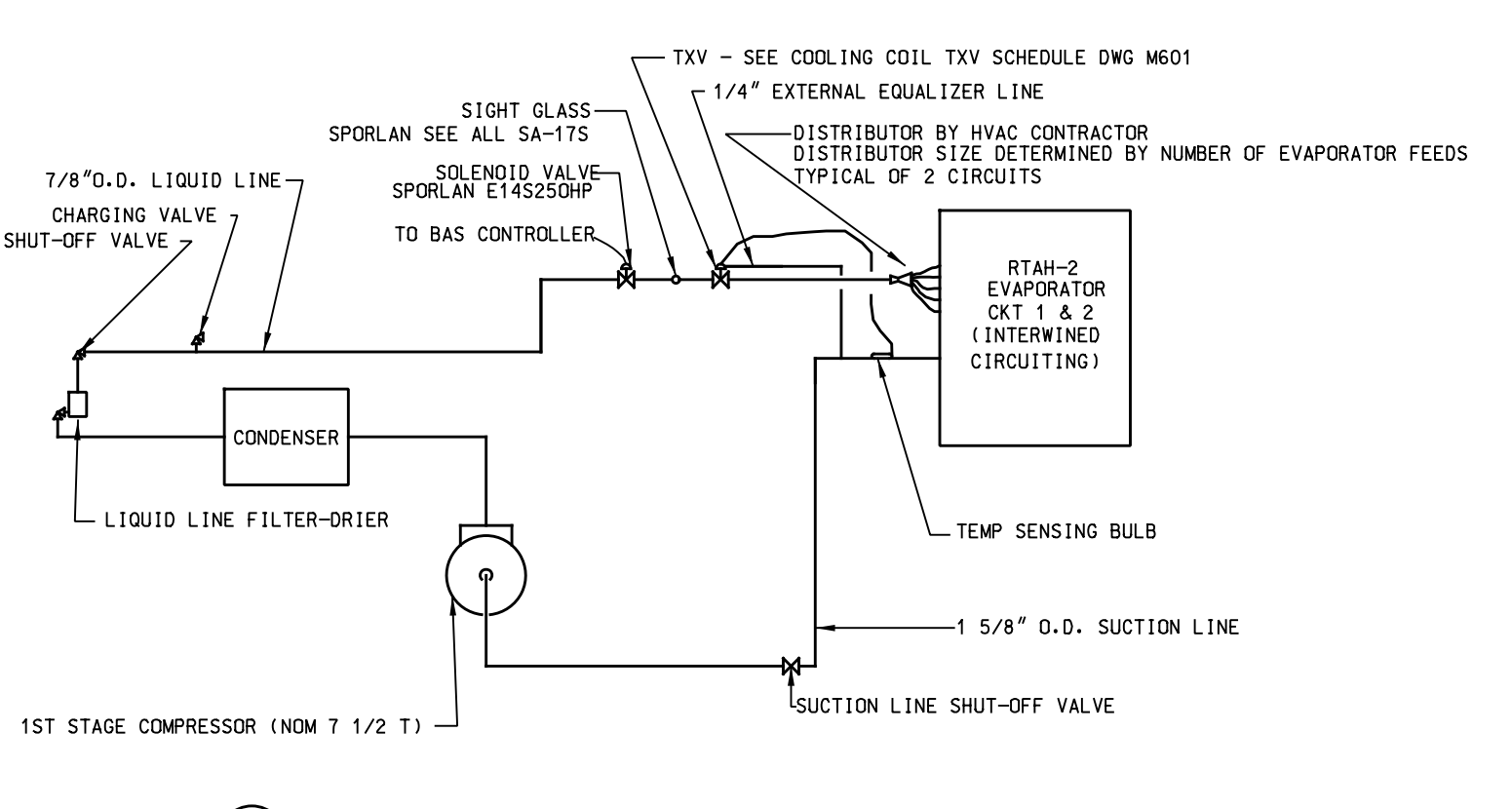
**E4** DAU-1 CIRCUIT 2 OF 2 PIPING DETAIL  
EXISTING CONDENSING UNIT WITH DUAL CIRCUITING  
DOTTED LINE INDICATES FACTORY PROVIDED PIPING; ALL OTHER PIPING AND SPECIALTIES BY THE HVAC CONTRACTOR



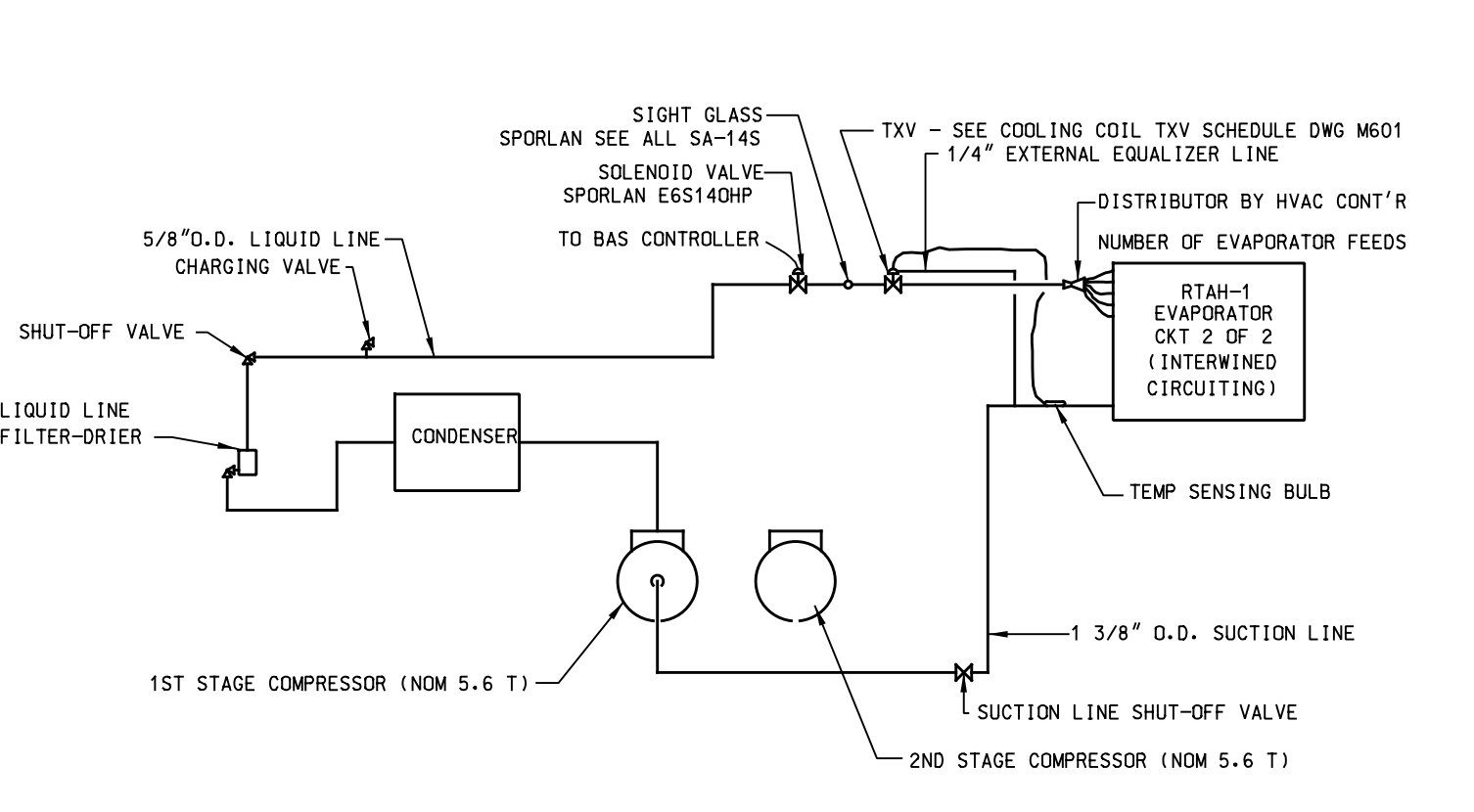
**E5** DAU-1 CIRCUIT 1 OF 2 PIPING DETAIL  
EXISTING CONDENSING UNIT WITH DUAL CIRCUITING  
DOTTED LINE INDICATES FACTORY PROVIDED PIPING; ALL OTHER PIPING AND SPECIALTIES BY THE HVAC CONTRACTOR



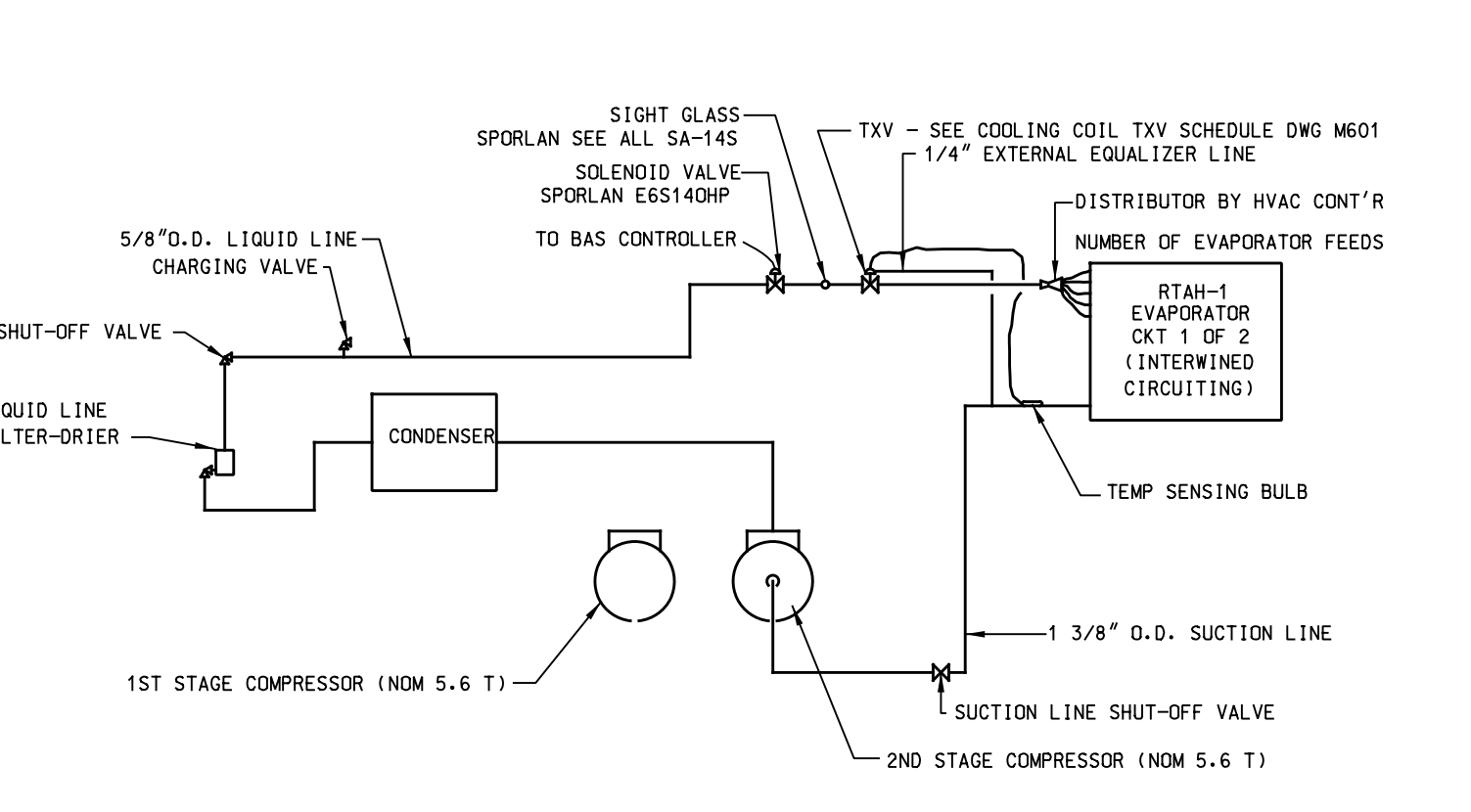
**E2** FAN COIL MOUNTING DETAIL  
SCALE: NOT TO SCALE



**E3** RTAH-2 CIRCUIT 1 PIPING DETAIL  
CONDENSING UNIT WITH DUAL CIRCUITING  
DOTTED LINE INDICATES FACTORY PROVIDED PIPING; ALL OTHER PIPING AND SPECIALTIES BY THE CONTRACTOR



**E4** RTAH-1 CIRCUIT 2 OF 2 PIPING DETAIL  
CONDENSING UNIT WITH DUAL CIRCUITING  
DOTTED LINE INDICATES FACTORY PROVIDED PIPING; ALL OTHER PIPING AND SPECIALTIES BY THE HVAC CONTRACTOR



**E5** RTAH-1 CIRCUIT 1 OF 2 PIPING DETAIL  
CONDENSING UNIT WITH DUAL CIRCUITING  
DOTTED LINE INDICATES FACTORY PROVIDED PIPING; ALL OTHER PIPING AND SPECIALTIES BY THE HVAC CONTRACTOR

No.	Date	Revision
2	11/19/11	ISSUED FOR CONSTRUCTION
1	10/21/11	ISSUED FOR HANNAFORD 100% REVIEW
0	09/26/11	ISSUED FOR HANNAFORD 100% REVIEW

REMODEL HANNAFORD  
SUPERMARKET & PHARMACY  
STORE #8351 - 295 FOREST AVENUE  
PORTLAND, MAINE 04101

Hannaford Bros. Co.

**JACOBS**  
MECHANICAL ENGINEERING GROUP, INC.  
5700 Major Boulevard, Suite 400  
Portland, ME 04103-2001  
Phone: 407-903-5001 Fax: 407-903-5195

MECHANICAL ENGINEER OF RECORD  
NAME: KEVIN EUGA, P.E.  
MAINE REGISTERED PE# 12608

MECHANICAL DETAILS  
Designed by: KEUGA  
Drawn by: KEUGA  
Checked by: KEUGA  
Scale: NTS  
Date: 10/21/11

Drawing No.  
**M501**  
Project No.  
**FRYR0300**  
HBC-PORTLAND, ME