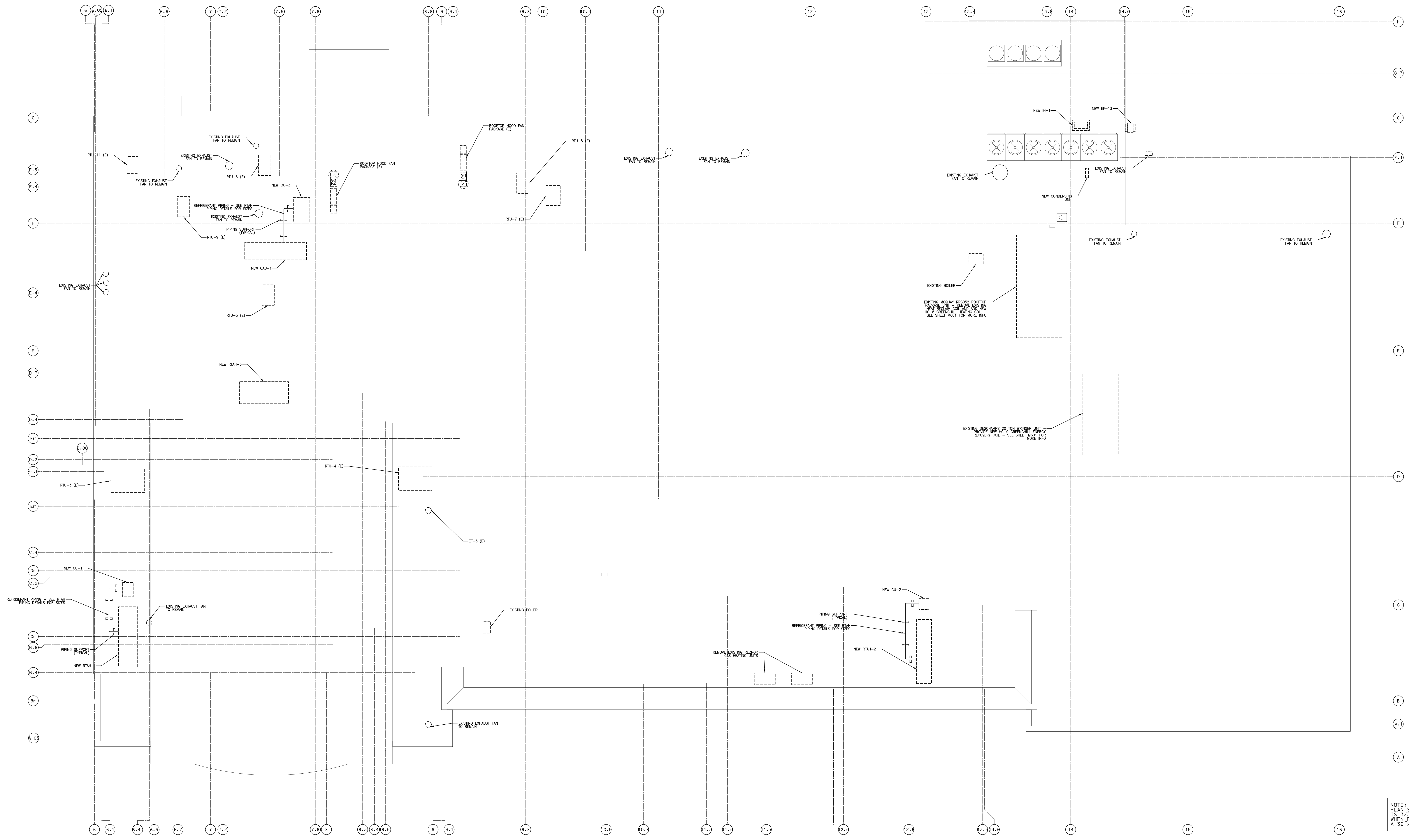


- NOTES
1. REFRIGERANT PIPING SHALL SLOPE 1" PER 20' TOWARD THE COMPRESSOR.
  2. SUPPORT REFRIGERANT PIPING ON DUNNAGE WITH SPACING AS SCHEDULED BELOW.
  3. SUPPORT DUNNAGE SHALL BE PRESSURE TREATED NOMINAL 4" x 4" MINIMUM. SEE ARCHITECTURAL ROOF DETAILS FOR MEMBRANE NEAR PROTECTORS.
  4. DUNNAGE SHALL BE SHIMMED OR TAPERED LOWER TO MATCH ROOF SLOPE AND MAINTAIN A LEVEL TOP SURFACE TO PROPERLY SLOPE PIPING AND MAINTAIN EQUIPMENT LEVEL AND PLUMB.
  5. SEE DRAWING W001 FOR REFRIGERANT PIPING DETAILS. REFRIGERANT PIPING BY HVAC CONTRACTOR.
  6. SEE DRAWING W001 FOR ROOF TOP UNITS CONDENSATE PIPING DETAIL. CONDENSATE PIPING BY HVAC CONTRACTOR.
  7. SHOW ROOF CURBS SO THAT FANS, RTU'S AND CAU ARE LEVEL AND PLUMB.

PPE SUPPORT SCHEDULE

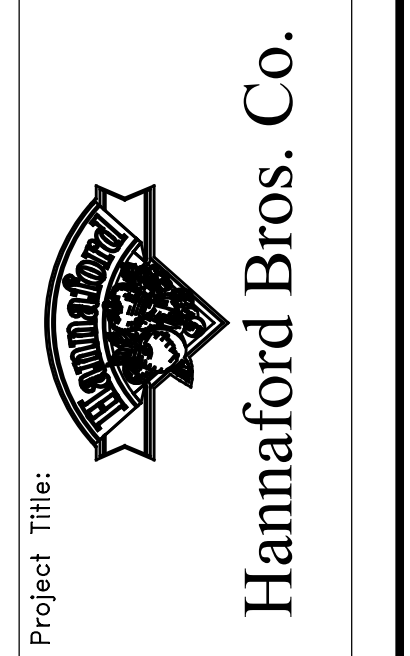
BASED ON ACR ASTM B300 COPPER TUBING

PPE SIZE (INCHES)	MAX SUPPORT SPACING, FEET
3/8	4
1/2	5
5/8	6
1 1/8	6
1 3/8	7
1 5/8	8



No.	Date	Revision
2	11/16/11	ISSUED FOR CONSTRUCTION
1	10/21/11	ISSUED FOR HANNAFORD STORE REVIEW
0	09/26/11	ISSUED FOR HANNAFORD STORE REVIEW

REMODEL HANNAFORD  
 SUPERMARKET & PHARMACY  
 STORE #8351 - 295 FOREST AVENUE  
 PORTLAND, MAINE 04101

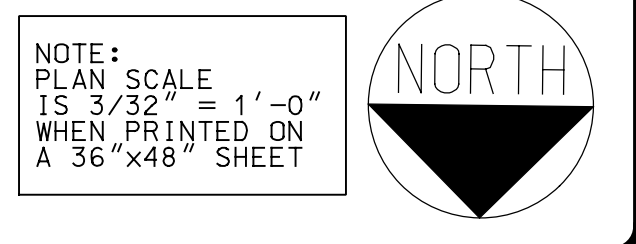


Project Title:  
**JACOBS**  
 JACOBS ENGINEERING GROUP, INC. 04-001008  
 5700 Major Boulevard, Suite 400  
 Portland, Maine 04103-2001  
 Phone: 407-500-5000 Fax: 407-500-5195

Prepared By:  
 Swat:  
 MECHANICAL ENGINEER OF RECORD  
 NAME: KEVIN EUGA, P.E.  
 MAINE REGISTERED PEI: 12608

Mechanical Roof Plan  
 Scale: 3/32" = 1'-0"  
 Date: 10/21/11  
 Designed by: KEUGA  
 Drawn by: KEUGA  
 Checked by: KEUGA

Drawing No.  
**M105**  
 Project No.  
**PYR0300**  
 IBC-PORTLAND, ME



11/16/2011 9:02:26 AM  
 A  
 B  
 C  
 D  
 E

1 2 3 4 5 6