

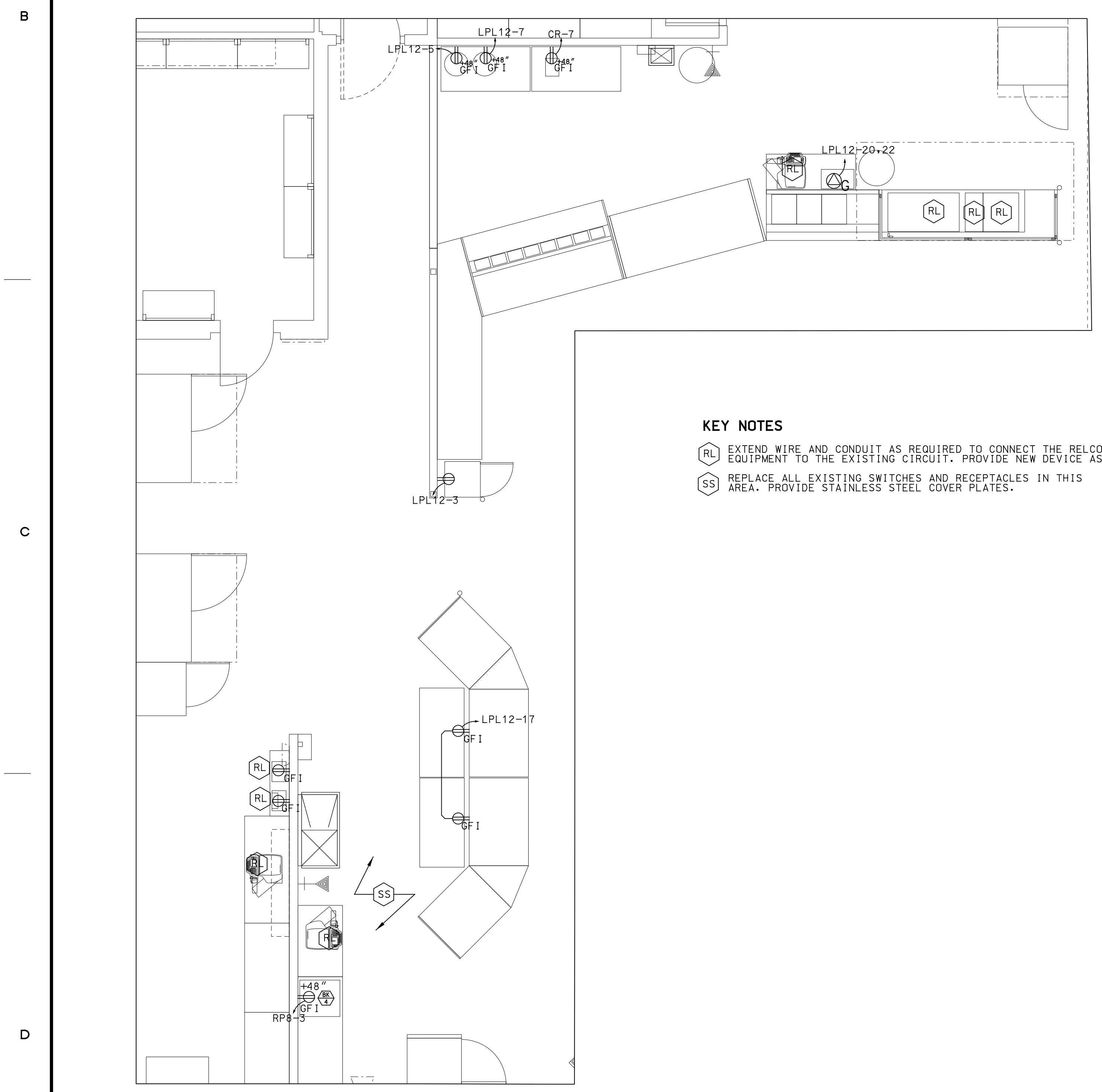
ST SEAFORD AND DELI POWER
E407 1/2"=1'-0"

STORE EQUIPMENT - DELI DEPARTMENT								
EQUIPMENT IDENTIFICATION				ELECTRICAL REQUIREMENTS				
TAG	MFR.	ITEM	MODEL	KVA	VOLT/PH	FLA	CONN.	REMARKS
RF-1	BLANCO	AUTO SLICER	SE120	0.8	120/1	6.4	CP	
RF-2	TURN-O-MATIC	TAKE-A-NO. SYSTEM	59812	.1	120V/1	.1	CP	TRANSF./AUTO/NO. WIRE SUPPLIED WITH UNIT- INSTALLED BY E.C.
RF-3	HEBART	REFRIGERATED COMPART. SEMI-AUTO WRAP SYSTEM	485	2.1	208V/1	12	CP	REQUIRE SINGLE CORD
				.06	120V/1	.5	CP	REQUIRE SINGLE CORD
				.84	120V/1	7.8	CP	REQUIRE SINGLE CORD

* = INDICATES ESTIMATED LOAD

CONNECTION KEY
 CP = CORD AND PLUG FURNISHED WITH EQUIPMENT
 CPE = CORD AND PLUG FURNISHED BY ELECTRICAL CONTRACTOR
 HW = HARD WIRED

- KEY NOTES**
- 1 INSTALL JUNCTION BOX FOR TAKE-A-NUMBER DISPLAY POWER ON TOP OF REFRIGERATED CASE.
 - RC INSTALL RECEPTACLE ON BACK OF CASE AND EXTEND WIRE AND CONDUIT TO CONNECT RECEPTACLE TO THE EXISTING CIRCUIT. ROUTE WIRE AND CONDUIT VIA THE REFRIGERATION CHASE.
 - SS REPLACE ALL EXISTING SWITCHES AND RECEPTABLES IN THIS AREA. PROVIDE STAINLESS STEEL COVER PLATES.



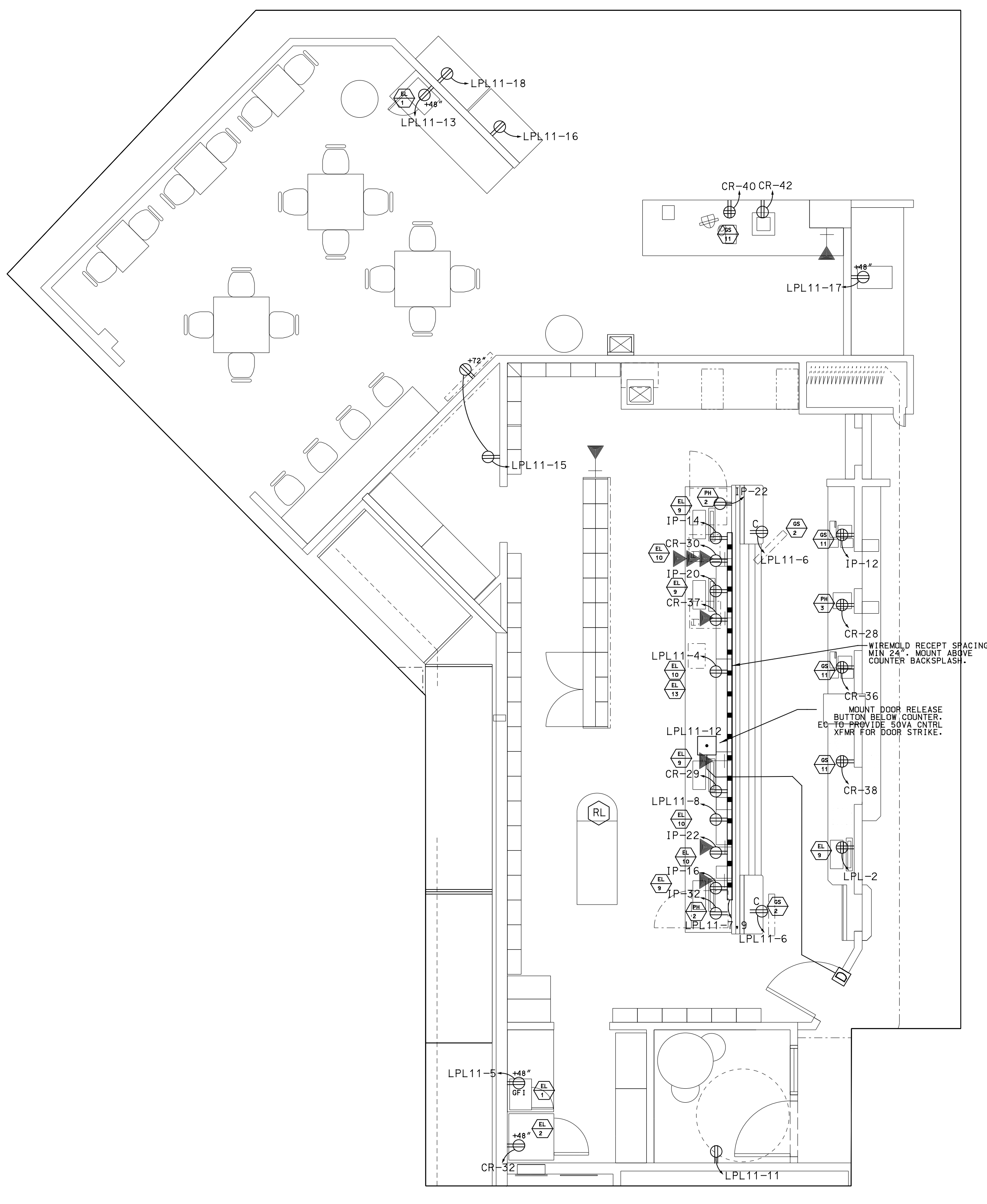
- KEY NOTES**
- RL EXTEND WIRE AND CONDUIT AS REQUIRED TO CONNECT THE RELOCATED EQUIPMENT TO THE EXISTING CIRCUIT. PROVIDE NEW DEVICE AS REQUIRED.
 - SS REPLACE ALL EXISTING SWITCHES AND RECEPTABLES IN THIS AREA. PROVIDE STAINLESS STEEL COVER PLATES.

ST BAKERY AND DELI POWER
E407 1/2"=1'-0"

STORE EQUIPMENT - BAKERY DEPARTMENT								
EQUIPMENT IDENTIFICATION				ELECTRICAL REQUIREMENTS				
TAG	MFR.	ITEM	MODEL	KVA	VOLT/PH	FLA	CONN.	REMARKS
RF-1	LANG	PROOFER	LRF1140 - 1201	5.0	208V/1	24.0	HW	
RF-2	BERKEL	BREAD SLICER	MB	.11	115V/1	6.2	CP	
RF-3	PANASONIC	MICROWAVE	NR975	1.5	120V/1	12.7	CP	NEMA 5-20R
RF-4	LANG	1 RACK GAS OVEN	LRO-15	1.2	208V/3	6	HW	NO IMPACT MOTORS
RF-5	KEURIG	BREWER	B7000	1.7	120V/1	15	CP	NEMA 5-15R

* = INDICATES ESTIMATED LOAD

CONNECTION KEY
 CP = CORD AND PLUG FURNISHED WITH EQUIPMENT
 CPE = CORD AND PLUG FURNISHED BY ELECTRICAL CONTRACTOR
 HW = HARD WIRED



- KEY NOTES**
- RL EXTEND WIRE AND CONDUIT AS REQUIRED TO CONNECT THE RELOCATED EQUIPMENT TO THE EXISTING CIRCUIT. PROVIDE NEW DEVICE AS REQUIRED.

NOTE: ALL RECEPTABLES AT PHARMACY COUNTER SHALL BE MOUNTED BELOW COUNTER UNLESS NOTED OTHERWISE. EC SHALL COORDINATE BELOW COUNTER OUTLETS (POWER, COMMUNICATION, PHONE) LOCATION WITH CUSTOM MILLWORK. RECEPTABLES CIRCUITED FROM PANEL OR SHALL BE TYPE 1G RECEPTABLES TO INDICATE EMERGENCY POWER.

STORE EQUIPMENT - PHARMACY DEPARTMENT								
EQUIPMENT IDENTIFICATION				ELECTRICAL REQUIREMENTS				
TAG	MFR.	ITEM	MODEL	KVA	VOLT/PH	FLA	CONN.	REMARKS
RF-1	LIFE CLINIC	BLOOD PRESSURE MACH.	LC 300	.3	120V/1	2.5	CP	
RF-2	SLAMIT	REFRIGERATOR	CT 70U	.2	120/1	1.3*	CP	
RF-3		PC SIGNATURE CAPTURE		.16	120V/1	.3*	CP	REQUIRES RECEPTACLE

* = INDICATES ESTIMATED LOAD

CONNECTION KEY
 CP = CORD AND PLUG FURNISHED WITH EQUIPMENT
 CPE = CORD AND PLUG FURNISHED BY ELECTRICAL CONTRACTOR
 HW = HARD WIRED

STORE EQUIPMENT - GENERAL STORE EQUIPMENT								
EQUIPMENT IDENTIFICATION				ELECTRICAL REQUIREMENTS				
TAG	MFR.	ITEM	MODEL	KVA	VOLT/PH	FLA	CONN.	REMARKS
RF-1	PANASONIC	MICROWAVE	NN-S0695	1.5	120	12.7	CP	
RF-2	CRANE	VENDING MACHINE		1.4	120	12	CP	
RF-3		PC		.5	120	4.2	CP	
RF-4		PC PRINTER		1.1	120	9.8	CP	
RF-5	INTIMUS	SHREDDER	402	.3	120	4	CP	
RF-6	SENSORMATIC	PUBLIC VIEW MONITOR	RM21-RM514	.06	120	.5	CP	
RF-7	POS SYSTEM	CASH DRAWER	SERIES 4000	.36	120	3.0	CP	
RF-8	VERIFY MFR	CHECK READER	TR 4000					
RF-9	RF MFC	EPS CUSTOMER TERMINAL	5500W					MFR. AND EQUIP TO BE FIELD VERIFIED
RF-10	IT REP	HAND SCANNER (SYMBA)	L 94007					
		TERMINAL (LANSING)	SETELEK					
		TOUCH SCREEN (MINOR)	BA 72					
		REMOTE DISPLAY (MINOR)	MS80B					

* = INDICATES ESTIMATED LOAD

CONNECTION KEY
 CP = CORD AND PLUG FURNISHED WITH EQUIPMENT
 CPE = CORD AND PLUG FURNISHED BY ELECTRICAL CONTRACTOR
 HW = HARD WIRED

ST PHARMACY AND CAFE POWER
E407 1/2"=1'-0"

Project Title: REMODEL HANNAFORD SUPERMARKET & PHARMACY STORE #8351 - 295 FOREST AVENUE PORTLAND, MAINE 04101

Prepared By: JACOBS ENGINEERING GROUP, INC. 17/07

Electrical Engineer of Record: JOSEPH HARRILL, P.E. MANNE REGISTERED PEI: 17/07

Scale: AS NOTED Date: 10/21/11

Designed by: J. HARRILL
 Drawn by: J. HARRILL
 Checked by: L. PEREZ

Drawing No. E401
 Project No. FRYR0300

Revision Table:

No.	Date	Revision
2	11/19/11	ISSUED FOR CONSTRUCTION
1	10/21/11	ISSUED FOR HANNAFORD 100% REVIEW
0	08/26/11	ISSUED FOR HANNAFORD 00% REVIEW