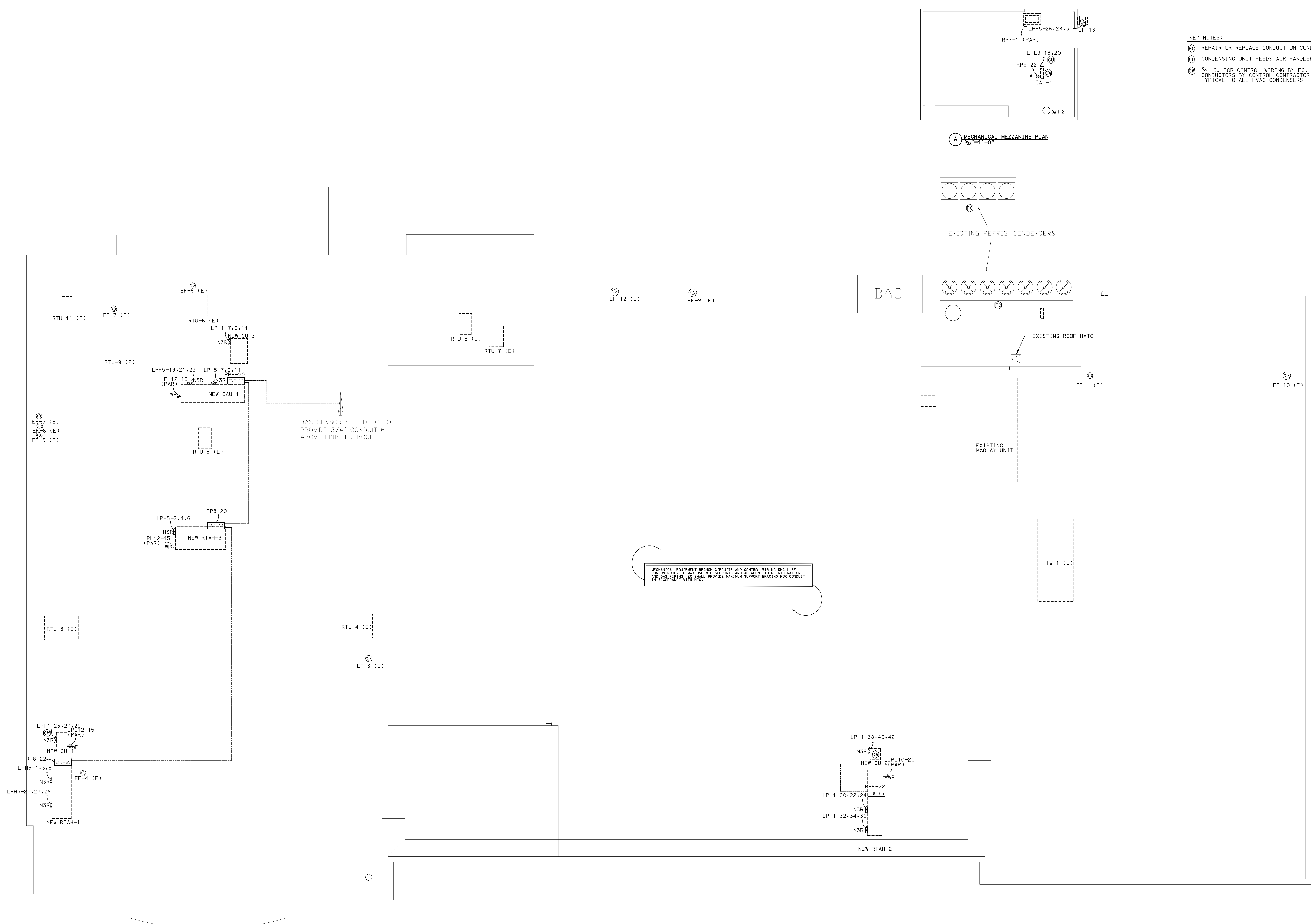


11/17/2011 8:51:30 AM

A
B
C
D
E



- GENERAL NOTES:
- 1) EC TO PROVIDE PULLSTRING IN BAS CONDUIT.
 - 2) ALL ROOF TOP EQUIPMENT SERVICE RECEPTACLES SHALL BE WP AND GFI.
 - 3) FIELD VERIFY EXACT ROOFTOP EQUIPMENT LOCATION.
 - 4) FIELD VERIFY EXACT BAS CONDUIT ROUTING W/ CONTROLS CONTRACTOR.
 - 5) EC TO PROVIDE AND INSTALL NEMA 3R NON-FUSED DISCONNECTS FOR ROOFTOP CONDENSER UNITS 1 THRU 6
 - 6) SENSOR CONDUIT SHALL BE 7' AFF SEE DETAIL A1-E502
 - 7) ALL CONDUIT BODIES AND JUNCTION BOXES SHALL BE CLOSED AT TIME OF INSTALLATION TO PREVENT WATER FROM ENTERING RACEWAYS. CONDUIT BODIES AND JUNCTION BOXES SHALL REMAIN CLOSED AND WEATHER TIGHT AT ALL TIMES DURING CONSTRUCTION. RACEWAY SHALL BE CLEARED WITH COMPRESSED AIR OR BLOWER TO ENSURE DRY RACEWAY PRIOR TO CONDUCTOR INSTALLATION.

----- 3/4" BAS SURFACE MOUNT RIGED METAL CONDUIT

- KEY NOTES:
- Ⓡ REPAIR OR REPLACE CONDUIT ON CONDENSING UNITS.
 - Ⓢ CONDENSING UNIT FEEDS AIR HANDLER BELOW.
 - Ⓣ 3/4" C. FOR CONTROL WIRING BY EC. CONDUCTORS BY CONTROL CONTRACTOR. TYPICAL TO ALL HVAC CONDENSERS

MECHANICAL EQUIPMENT BRANCH CIRCUITS AND CONTROL WIRING SHALL BE RUN ON RIGID EC WP USE W/ID SUPPORTS AND ALLOWED TO REGENERATION AND EXISTING EC SHALL PROVIDE MAXIMUM SUPPORT BRACING FOR CONDUIT IN ACCORDANCE WITH NEC.

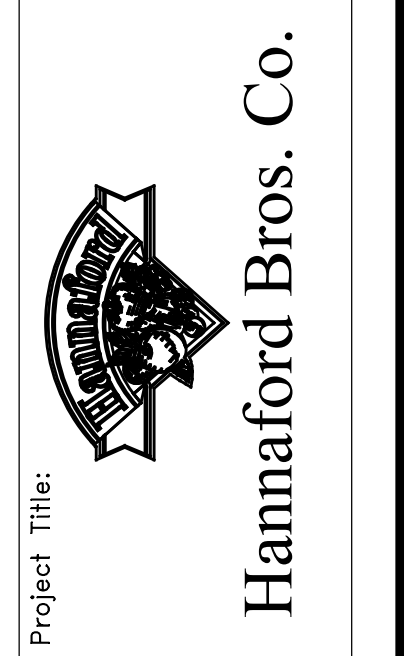
A ROOF POWER PLAN

NOTE:
PLAN SCALE
1" = 3'-0"
WHEN PRINTED ON
A 36" X 48" SHEET



No.	Date	Revision
2	11/19/11	ISSUED FOR CONSTRUCTION
1	10/21/11	ISSUED FOR HANNAFORD DOOR REVIEW
0	09/26/11	ISSUED FOR HANNAFORD DOOR REVIEW

REMODEL HANNAFORD
SUPERMARKET & PHARMACY
STORE #8351 - 295 FOREST AVENUE
PORTLAND, MAINE 04101



Project Title:
JACOBS
JACOBS ENGINEERING GROUP, INC.
5700 Major Boulevard, Suite 400
Portland, ME 04103-2001
Phone: 407-203-5199

Prepared By:
Electrical Engineer of Record
NAME: JOSEPH HARRILL, P.E.
MAINE REGISTERED PEI: 12/07

Roof Power Plan
Scale: 3/32" = 1'-0"
Date: 10/21/11

Drawing No.
E107
Project No.
PFR0300