

CONSTRUCTION REQUIREMENTS
Walk-in coolers and freezers shall be constructed of prefabricated sections joined together to form rooms of exact dimensions as specified.

FINISHES
Interior 26 Ga. white epoxy galvanized steel. Exterior 16 Ga. natural embossed galvanized steel except prep areas and areas visible to customer which will be white.

INSULATION
Insulation shall be rigid urethane with a conductivity factor (K factor) not to exceed 0.12 BTU/hr. Urethane is to have a minimum density of 2.2 pounds per cubic foot.

THICKNESS
4" (COOLER WALLS) "U" FACTOR .036 "R" VALUE 30.
5" (FREEZER WALLS) "U" FACTOR .032 "R" VALUE 32.
5" (COOLER/FREEZER CEILINGS) "U" FACTOR .025 "R" VALUE 40
6" (UNDER SLAB) "U" FACTOR .025 "R" VALUE 40

This insulation shall be a listed urethane with a rating of no more than 25 for flame spread and 450 for smoke developed per ASTM E84. This urethane will also meet the requirements of ASTM D-1925. Completed units to bear the label of a recognized listing company for third party verification of fire properties. Insulation shall not contain nor emit during injection any chlorofluorocarbons (CFC's).

PANEL FASTENERS
Compression panel fasteners employing all eccentric mechanism and clutch principal to align panels perfectly and compress gaskets fully. Fasteners shall be able to be operated from interior side (using an allen wrench) and all holes sealed with a vinyl plug. A minimum of three cam-locks fasteners per panel are to be provided.

PANEL GASKETS
All sections shall have double-lined gaskets, which will not deteriorate. Gaskets to be secured in a clean, neat orderly fashion between panels. DIAL THERMOMETER shall be flush mounted in door section. Dial thermometer to have 2" diameter face and a temperature range of -40° to +60° F. Finish to be polished chrome.

LIGHTING AND ELECTRICAL
Door section to be provided with factory-installed switch outlet box. Flush-mounted with a chrome steel switch plate on the exterior and 1/2" conduct extended 2" above cooler ceiling panel. Meat cooler and meat prep. cooler shall have 2 gang outlet boxes @ each door, with a 1 gang outlet box everywhere else. Service required is 120 volt, 60 cycle, 1-phase. Lighting for dairy doors shall be Gemtron 3500K LED suitable for 0° F Starting. Lamps shall have protective shielding.

SCREENS
Factory provided screen shall be strip screed with NSF cover base on interior and aluminum angle on exterior. Butyl sealant to be used under the walls and aluminum angle still cone sealant to be used on the top and bottom of cover base and aluminum angle. See detail 2/A701

COOLER/FREEZER DOORS AND HARDWARE
Cooler and freezer doors shall be of the in-fitting type, clad and finished to match unit finish. Location and swing of doors shall be as specified. Door hinges shall be chrome or electro zinc plated heavy-duty wide strip with spring hinge. Latch shall be heavy-duty commercial type, with adjustable strike, recessed inside safety release and padding coating. All freezer doors furnished with UL approved frame perimeter heater to prevent condensation and freeze up. A heater strip shall be provided on door wiper gasket. All doors to feature a magnetic gasket on three sides for a positive seal. Doors to have adjustable double vinyl wiper gasket for seal at threshold. All gaskets to be easily replaceable and resistant to damage from oil, fats, water, and detergents. All in-fitting doors to include one Glynn-Johnson 79 Series extra heavy-duty door stop and stainless steel jamb guards. Doors shall have 5"-0" high diamond plate on sole side. Steel thresholds at doors to have stainless steel.

IMPACT DOORS
All impact doors shall be double-acting and shall be supplied and factory installed by the cooler manufacturer, as manufactured by Chase model Proline 3001 with heavy duty V-com hinges, 9" jamb guards, 125 degree swing hardware-reinforced spine, fully gasketed, 30" high spring bumpers, 16" x 16" windows, the color will be beige for all doors, except meat and seafood. Doors shall be white for meat and seafood. Door frame to include double 2x on hinge side, 12 ga. stainless steel jamb guards, and door stabilizers on interior side for added support.

CLEAR FLEXIBLE DOUBLE-ACTING DOORS
Double action clear flexible door, AirGuard EconoClear Flexible Door, Manufactured by Chase

GLASS DOORS
All glass doors shall be supplied and installed by the cooler manufacturer. Each door shall be constructed of an extruded, polished aluminum frame and shall contain at least two (2) panes of glass with heat reflective glass and glass fill. Low-temperature doors shall have built-in heaters to eliminate condensation. Doors shall be of the 114-in. 114-in-out type for easy cleaning. They shall be self-closing and shall contain magnetic gaskets to provide a tight seal. Hardware shall consist of concealed hinges and a handle with attractive contemporary styling. Interior lighting shall be Cross-Tite Series 160 Light Bar - no substitutions. A junction box shall be provided for 120 volt, 60 hertz, 1-phase, A.C. service.

HEATED VENTS
A heated vent shall be provided for all walk-in freezers operating at a temperature of 32 degrees F, or lower to equalize the differential in exterior & interior pressure caused by sudden temperature changes due to opening doors, loading products, & the defrosting of coils. The heated vent shall be located above the freezer door or located in a side panel, away from the direct air stream flowing from the evaporator. Electrical service required is 120 volt, 60 cycle, 1-phase.

CEILING SUPPORTS
All ceiling panels up to 16'-0" in length shall be self-supporting. Ceiling panels over 16'-0" long shall be supported from the building structure by means of hangers and wire.

CASE OPENINGS
Side panels for case openings shall not have grooves or filler strips, a solid 2x shall be used to frame the openings. Entire opening shall be covered by 16 Ga. stainless steel channel trim with mitered corners. When header trim is to be spliced the splice must be centered in the opening and covered with a piece of channel.

INSTALLATION
Walk-in box field installation shall be the responsibility of Starflex Fixture Corporation.

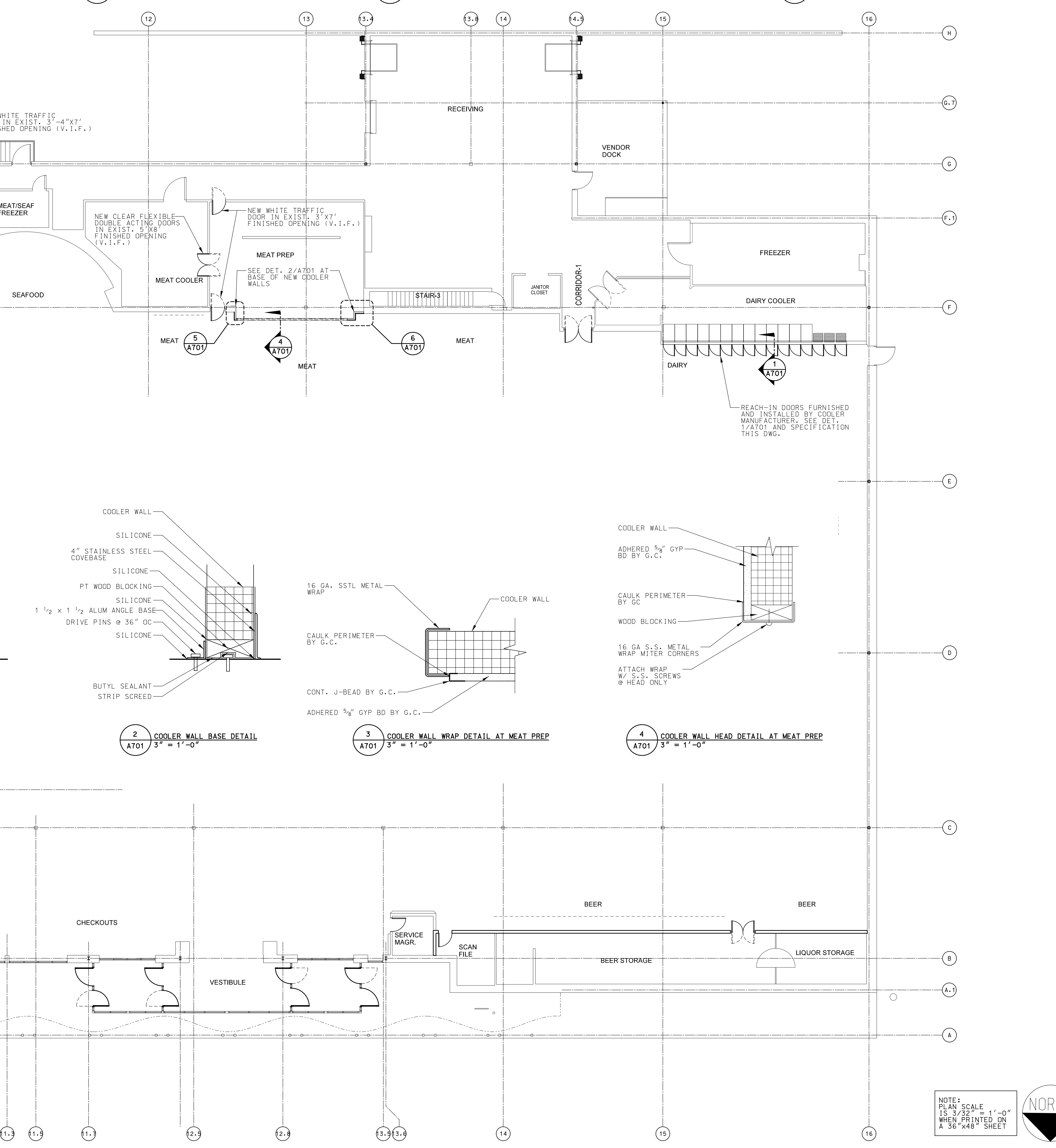
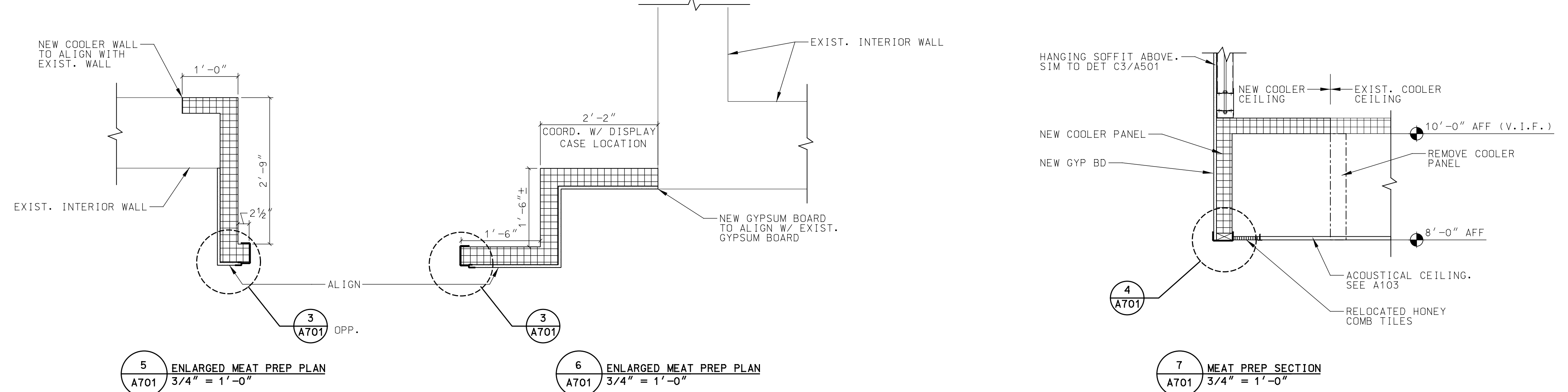
ELECTRICAL WORK
All final connections, light fixture mounting, and lighting ballast mounting to be performed by the owner's electrical contractors.

FRAMING
All freezer/cooler panels shall have a wood perimeter. Framing shall be tongue and groove at section joints. Panel joints shall be filled with foam-in-place urethane, which securely bonds to metal pans and perimeter wood frame creating a rigid structural panel.

REGULATIONS AND CODES
All work and materials shall be in full accordance with local and/or state ordinances.

WARRANTY
Crown Tanko guarantees the structural panels to be free of defects in material and workmanship for a period of ten (10) years.

NOTE
For panel systems contract:
Crown Tanko Walk In's
10700 Highway 55 Suite 300
Plymouth, MN 55441
888-822-2208
Starflex@antarko.com



Project information including client name (Remodel Hannaford Supermarket & Pharmacy), architect (Jacobs), and drawing title (Cooler Plan and Details).