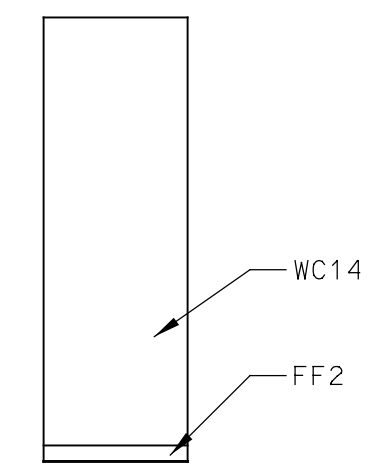
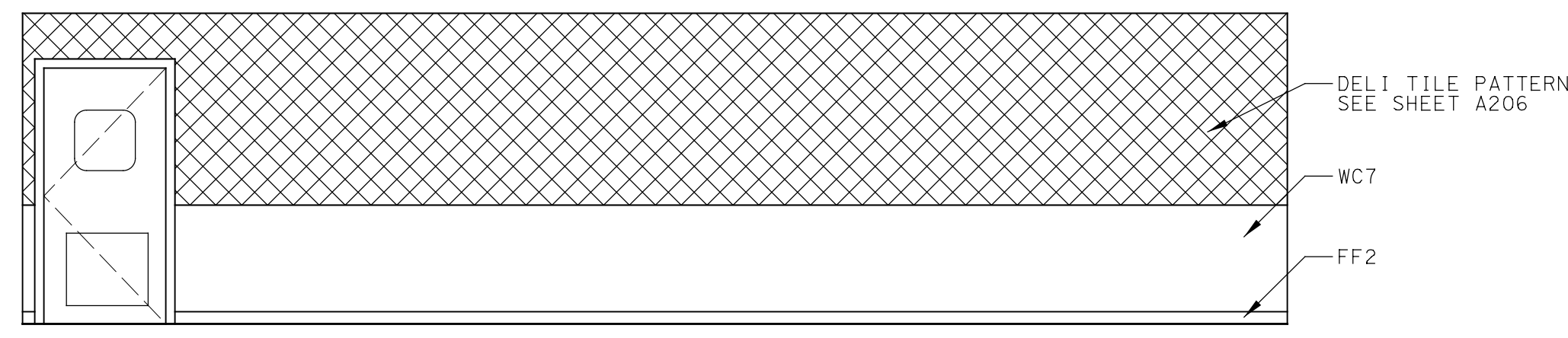


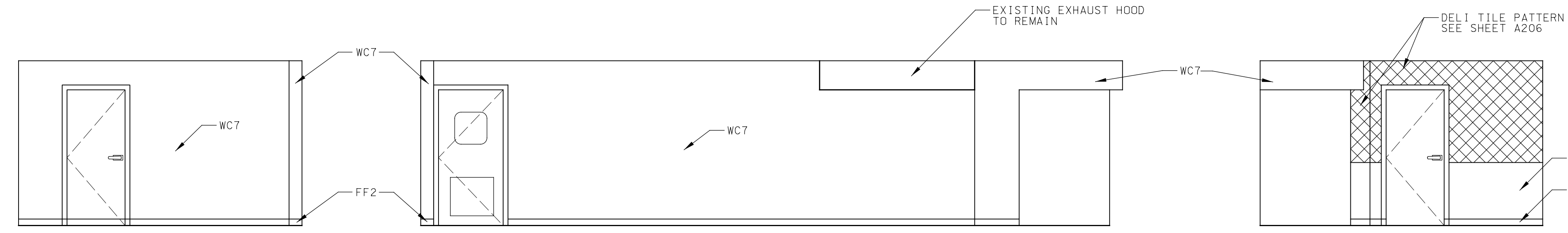
A DELI/GRILL
A207 1/4" = 1'-0"



B DELI/GRILL
A207 1/4" = 1'-0"



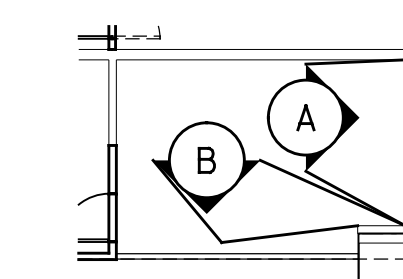
C DELI PREP
A207 1/4" = 1'-0"



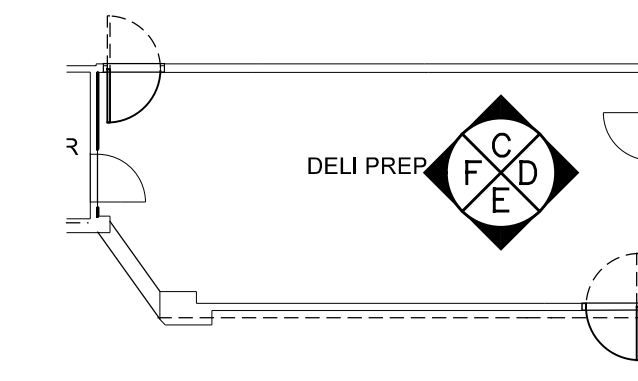
D DELI PREP
A207 1/4" = 1'-0"

E DELI PREP
A207 1/4" = 1'-0"

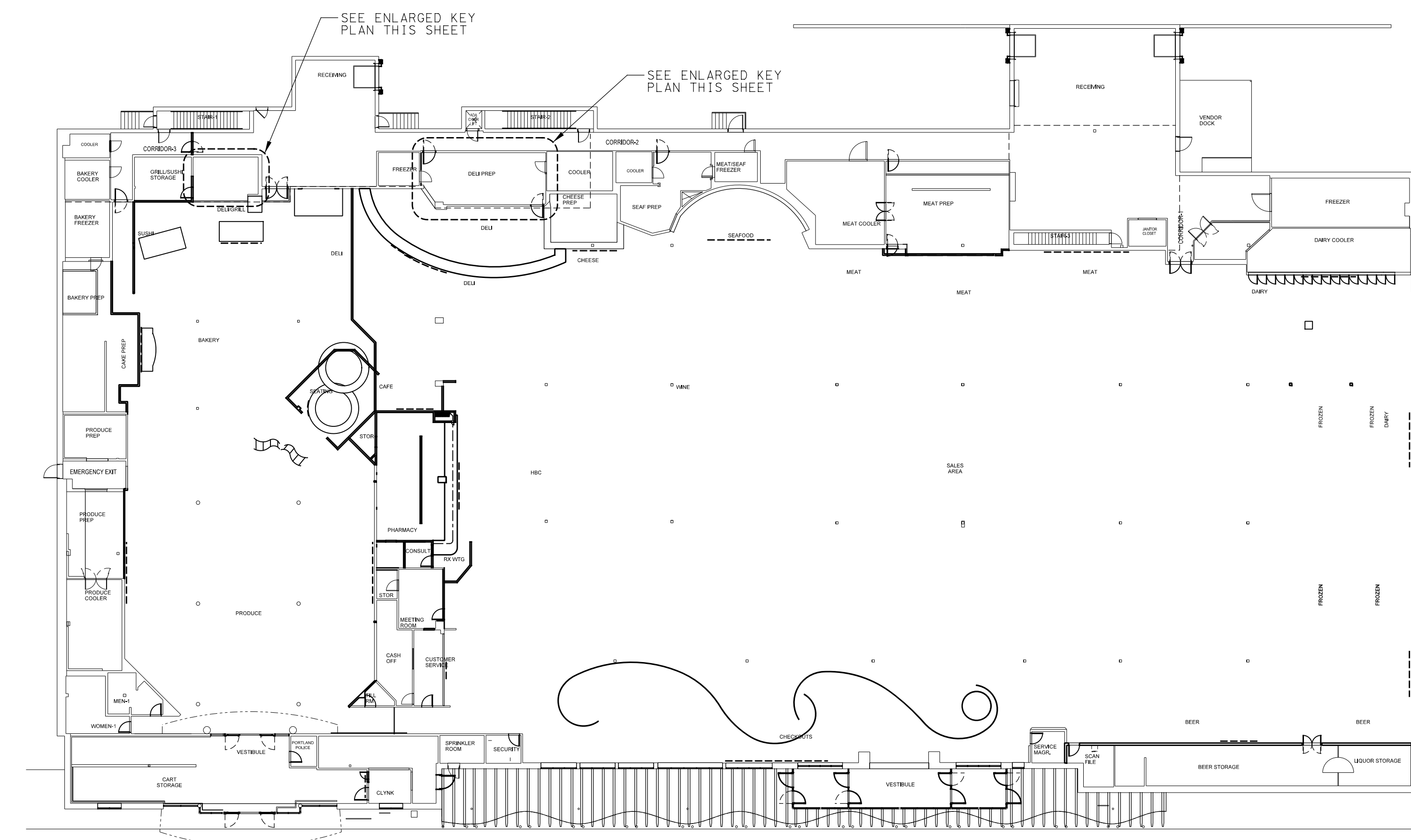
F DELI PREP
A207 1/4" = 1'-0"



ENLARGED KEY PLAN
N.T.S.



ENLARGED KEY PLAN
N.T.S.



KEY PLAN
N.T.S.

| No. | Date | Revision |
|-----|----------|-------------------------|
| 1 | 11/19/11 | ISSUED FOR CONSTRUCTION |

Project Title:
**REMODEL HANNAFORD
 SUPERMARKET & PHARMACY**
 STORE #8351 - 295 FOREST AVENUE
 PORTLAND, MAINE 04101

Hannaford Bros. Co.

Prepared By:
JACOBS
 JACOBS ENGINEERING GROUP, INC.
 5700 Major Boulevard, Suite 400
 Columbia, Maryland 21046
 Phone: 410-950-5200 Fax: 410-950-5195

Architect of Record:
 NAME: FLOYD W. MCCOLLUM, JR., AIA
 MAINE LICENSED ARCHITECT: 3850

Interior Elevations
 Scale: 1/4" = 1'-0"
 Date: 10/2/11

Designed by: I. ESHAK
 Drawn by: C. OLIVIERI
 Checked by: S. SOUELLETTE

Drawing No.
A207

Project No.
FFYR0300

HBC - PORTLAND, ME