

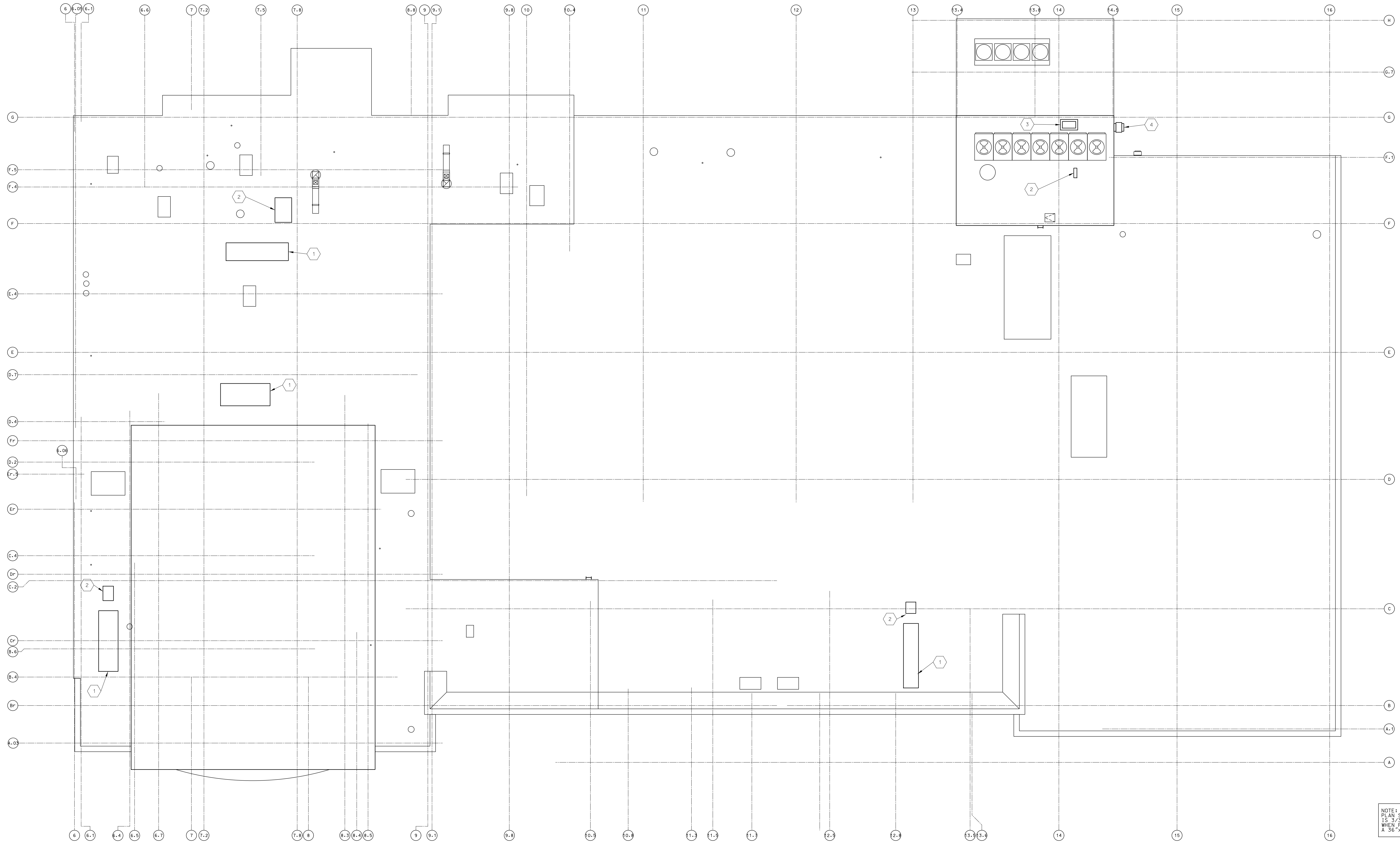
11/20/11 8:58:54 AM

GENERAL NOTES:

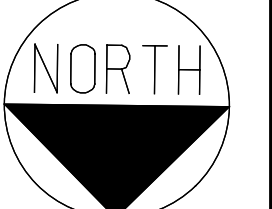
- A. ALL WOOD USED AT THE ROOF LEVEL SHALL BE FRT. FRT SHALL BE COMPATIBLE WITH THE ROOFING MEMBRANE.
- B. COORDINATE ALL ROOF PENETRATIONS WITH THE WORK OF THE OTHER TRADES.
- C. DECK OPENINGS 6" TO 15" WIDE, WELD 18 GAUGE GALVANIZED SHEET METAL 12" AROUND OPENING TO TOP SURFACE OF ROOF DECK.
DECK OPENINGS 15" TO 24" WIDE, PROVIDE 2"x2"x1/4" STEEL ANGLE TO UNDERSIDE OF DECK AT RIGHT ANGLES TO DECK RISER. EXTEND ANGLES THREE RIBS BEYOND EACH SIDE OF OPENING. PUDDLE WELD AT EACH RIB. WELD 18 GAUGE GALVANIZED SHEET METAL 12" AROUND OPENING TO TOP SURFACE OF ROOF DECK.
DECK OPENINGS 24" WIDE AND LARGER, PROVIDE 4"x3"x 1/2" STEEL ANGLE ROOF FRAMES SUPPORTED BY STRUCTURAL STEEL FRAMING.
- D. PROVIDE PITCH ROCKETS FOR EACH PIECE OF ROOF TOP EQUIPMENT FOR ELECTRICAL PENETRATIONS SEE DETAIL A1/A502
- E. ALL NEW MATERIALS TO MATCH EXISTING
- F. NOT ALL ROOF PENETRATIONS ARE SHOWN ON THE ROOF PLAN. ROOFING CONTRACTOR TO PROVIDE WATER TIGHT FLASHING AS REQUIRED FOR ALL ROOF PENETRATIONS.
- G. FOR ROOF DRAINAGE SEE PLUMBING.
- H. REFER TO PLUMBING DRAWINGS FOR QUANTITY AND LOCATION OF VTRS. FLASH USING DETAIL B1/A502
- I. G.C. TO PROVIDE ROOF FRAME FOR DRAIN PANS
- J. ONLY NEW UNITS ARE TAGGED ON PLAN. SEE MECHANICAL DRAWINGS FOR ADDITIONAL INFORMATION

KEY NOTES: NOTED BY THE SYMBOL (X)

- 1. NEW RTU - SEE DETAIL C1/A502 FOR CURB DETAIL REFER TO MECH DWS FOR SIZES AND TYPES
- 2. NEW CONDENSING UNIT - SEE DETAIL D1/A502. REFER TO PLUMBING DRAWINGS FOR MORE INFORMATION
- 3. NEW INTAKE HOOD - SEE DETAIL C1/A502. REFER TO MECHANICAL DRAWINGS FOR MORE INFORMATION. PROVIDE ANGLE FRAME SIMILAR TO DETAIL 4/5501
- 4. NEW WALL MOUNTED EXHAUST FAN. REFER TO MECHANICAL DRAWINGS FOR MORE INFORMATION AND STRUCTURAL FOR LINTEL

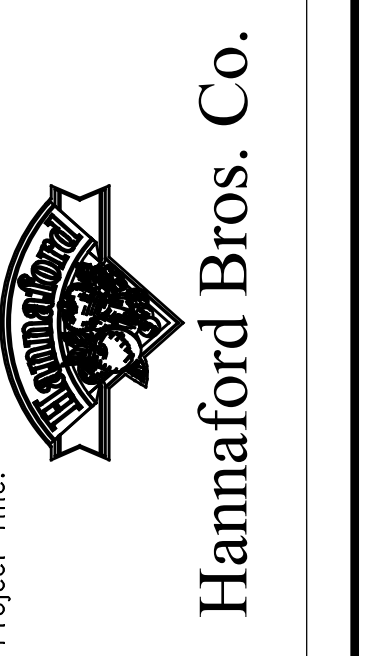


NOTE: SCALE
 PLAN SCALE = 1" = 0'-0"
 WHEN PRINTED ON
 A 36" X 48" SHEET



No.	Date	Revision
2	11/18/11	ISSUED FOR CONSTRUCTION
1	10/21/11	ISSUED FOR HANNAFORD 100% REVIEW
0	09/24/11	ISSUED FOR HANNAFORD 100% REVIEW

REMODEL HANNAFORD
 SUPERMARKET & PHARMACY
 STORE #8351 - 295 FOREST AVENUE
 PORTLAND, MAINE 04101



Project Title:
JACOBS
 JACOBS ENGINEERING GROUP, INC.
 5700 Major Boulevard, Suite 400
 Portland, ME 04103
 Phone: 407-505-5200 Fax: 407-505-5195

Prepared By:
 Architect of Record
 NAME: FLOYD W. MCCOLLUM, JR., AIA
 MAINE LICENSED ARCHITECT: 3850

Roof Plan
 Scale: 3/32" = 1'-0"
 Date: 10/21/11
 Designed by: I ESHAK
 Drawn by: I ESHAK
 Checked by: S OUELLETTE

Drawing No.
A104
 Project No.
PYR0300
 HBC-PORTLAND, ME