

- GENERAL NOTES:**
- THESE DRAWINGS SHALL BE READ IN CONJUNCTION WITH STRUCTURAL, MECHANICAL, PLUMBING AND ELECTRICAL DRAWINGS.
  - GC SHALL PROVIDE POSITIVE DRAINAGE IN ALL PREP, RESTROOM AND COOLER AREAS AS INDICATED ON PLAN.
  - GC SHALL PROTECT CONCRETE SLABS WHICH WILL BE EXPOSED TO VIEW.
  - REFER TO FINISH SCHEDULE FOR COLORS.

**SPECIAL PRECAST CONCRETE PLANK CORED HOLE NOTES**

- CONTRACTOR TO GROUT ALL ABANDONED CORED HOLES SOLID W/ NON-SHRINKING GROUT. CONTRACTOR TO ASSUME (90) 4" DIAMETER HOLES TO BE FILLED.
- CONTRACTOR TO GROUT THE ANNULAR SPACE BETWEEN NEW PIPING AND NEW CORED HOLES AT EXISTING PRECAST CONCRETE FLOOR PLANK W/ NON-SHRINKING GROUT. COORDINATE LOCATIONS W/ ALL MEPR DRAWINGS.

**KEY NOTES:** REPRESENTED BY THIS SYMBOL: [Symbol]

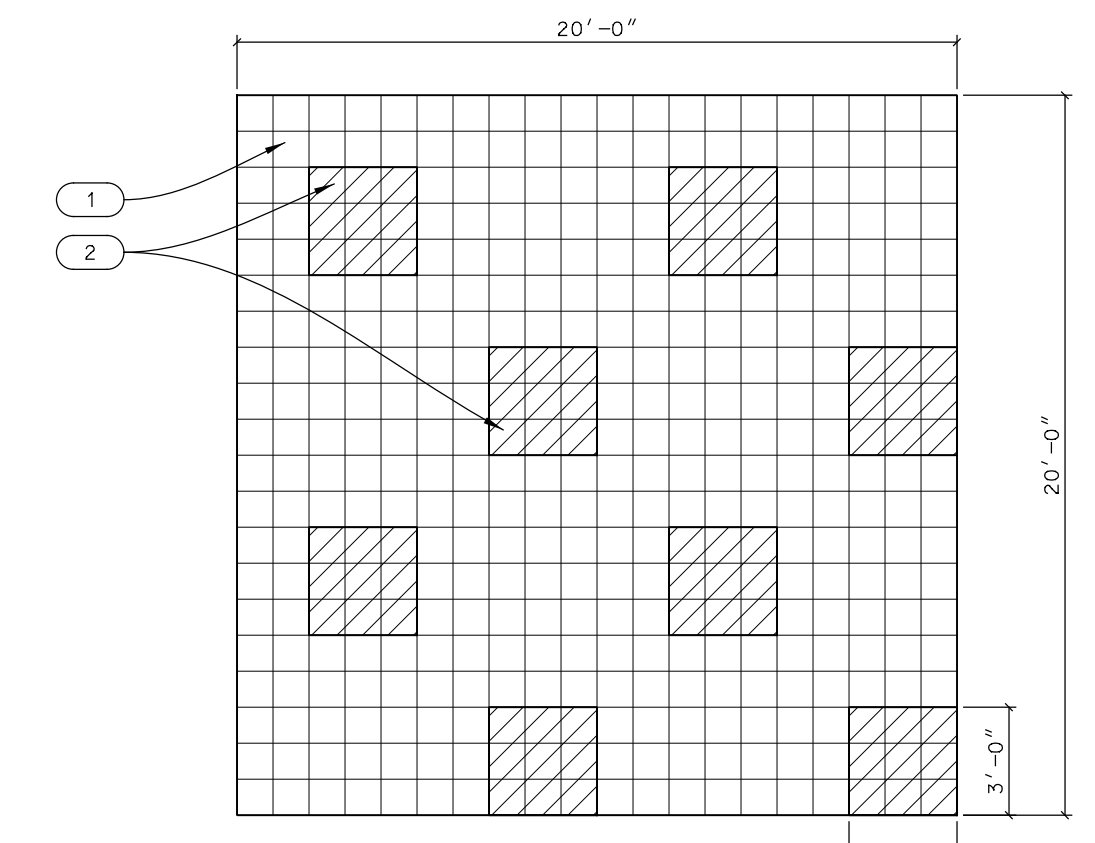
- VCT TO QUARRY TILE TRANSITION SEE DETAIL E1/A502
- NOT USED
- ALUMINUM SILL (EXTERIOR DOORS). SEE SILL TYPE B/A601
- STAINLESS STEEL TRANSITION STRIP 1/8"x8" OPENING FLUSH BOLT TO SLAB SEE SILL DETAIL C/A601
- VCT TO PORCELAIN TILE TRANSITION SEE DETAIL E2/A502
- CARPET TO VCT TRANSITION SEE DETAIL E3/A502
- NOT USED
- NOT USED
- STAINLESS STEEL CLOSURE AT FLOOR LEVEL. SEE DETAIL D2/A502
- LIMITS OF EXIST. QUARRY TILE TO BE REMOVED. PREPARE AND LEVEL AREA PRIOR TO INSTALLATION OF NEW V.C.T. PER MANUFACTURER'S INSTRUCTIONS. SEE SPEC'S. 096900.
- EXISTING FLOOR FINISH TO REMAIN
- NEW RUBBER TREADS AND RISERS. COLOR TO BE SELECTED FROM MFR. FULL STANDARD RANGE
- EXISTING FLOOR TILE AND GROUT TO BE CLEANED
- EXTEND LIMIT OF NEW QUARRY TILE TO UNDERNEATH DISPLAY CASES. REMOVE VCT AND PREP SLAB AS REQ'D TO ACHIEVE FLUSH FINISH BETWEEN OF AND VCT.

**LEGEND:**

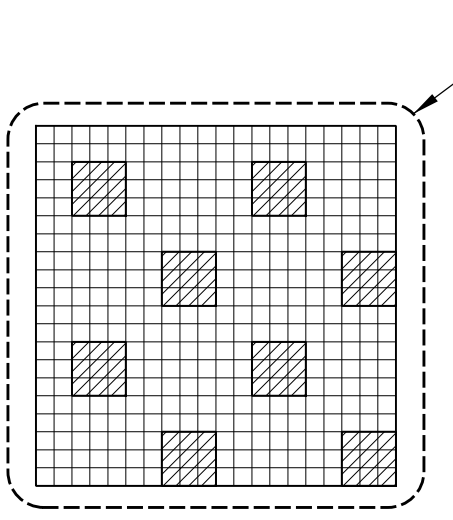
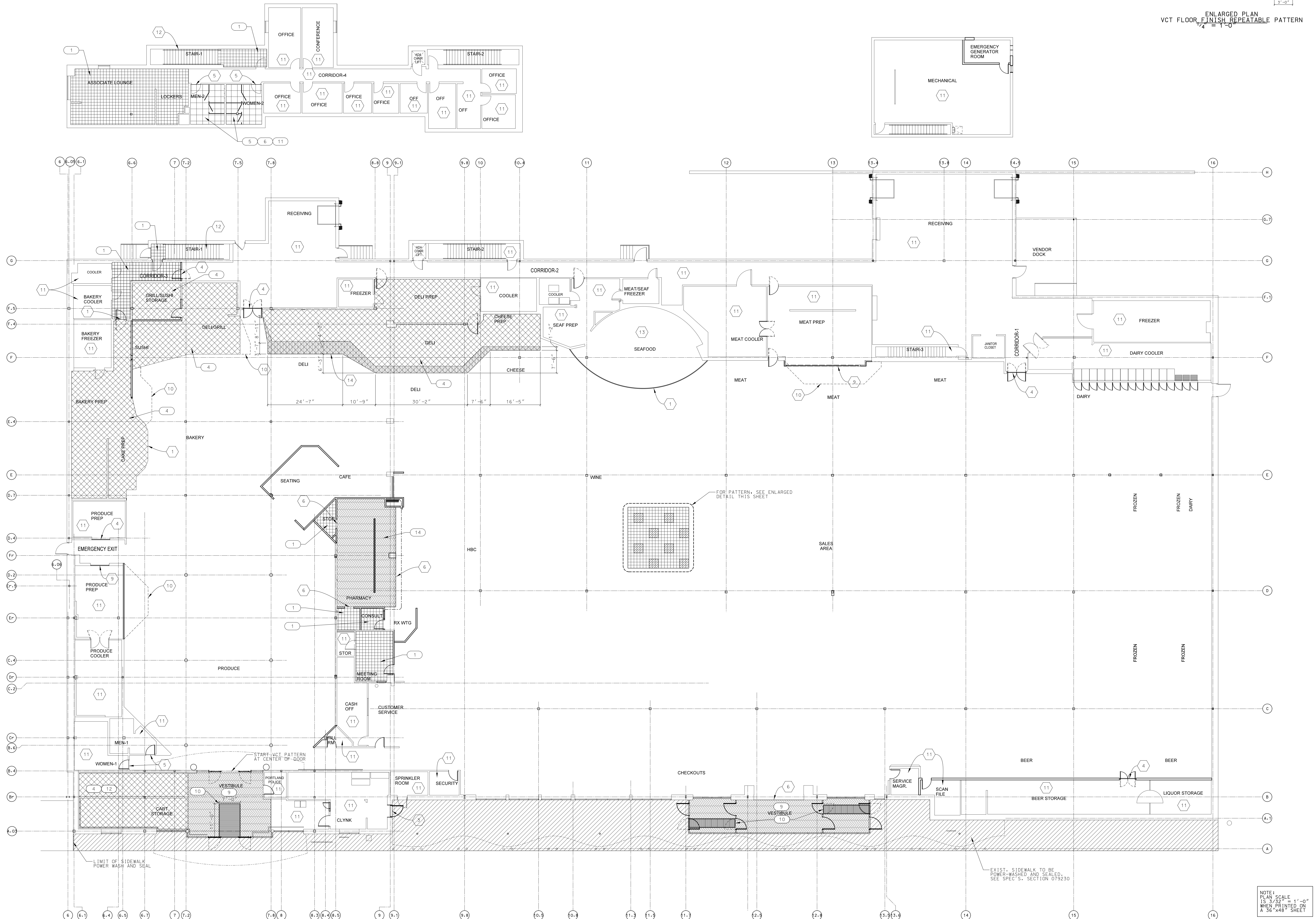
- VINYL COMPOSITION TILE (VCT) [Symbol]
- QUARRY TILE (THIN SET) [Symbol]
- CARPET [Symbol]
- PORCELAIN TILE [Symbol]
- EXIST. SIDEWALK POWERWASH AND SEAL [Symbol]
- SLOPE [Symbol]

NO.	TAG	COLOR	REMARKS
1	FF35	MILKSHAKE VCT	GENERAL SALES - FIELD
2	FF36	MALT VCT	GENERAL SALES - ACCENT
3	N/A		
4	FF2	DESERT QUARRY TILE	BOTTLE RETURN AREA, DELI & BAKERY
5	FF12	80-502 PORCELAIN TILE	13' X 13' RESTROOM FLOOR
6	807	INTEGRAL SLANT BASE	RESTROOM
7	N/A		
8	N/A		
9	FF13	CHARCOAL CARPET TILE	VESTIBULE CARPET TILE
10	FF14	POWERLINKS SE MAT	VESTIBULE
11	1011	LION GINGOLAYE	RESTROOM FLOOR TILE GROUT
12	104	SAND BEIGE	BOTTLE RETURN AREA, DELI & BAKERY GROUT
13	N/A		
14	FF35	CHARCOAL	PHARMACY ANTI-FAFURIG CARPET TILE

NOTE: SEE SPECIFICATION FOR ADDITIONAL INFORMATION

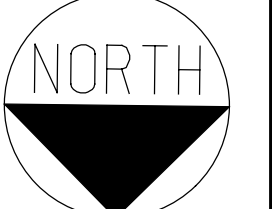


ENLARGED PLAN VCT FLOOR FINISH REPEATABLE PATTERN 1/4" = 1'-0"



EXIST. SIDEWALK TO BE POWER-WASHED AND SEALED. SEE SPEC'S - SECTION 079230

NOTE: SCALE PLAN 1/8" = 1'-0" WHEN PRINTED ON A 36" X 48" SHEET



11/20/11 8:52:24 AM

REMODEL HANNAFORD SUPERMARKET & PHARMACY STORE #8351 - 295 FOREST AVENUE PORTLAND, MAINE 04101

Project Title: Hannaford Bros. Co.

Prepared By: JACOBS ENGINEERING GROUP, INC. 3500 Market Street, Suite 400, Portland, ME 04103-2001

Architect of Record: FLOYD W. MCCOLLUM, JR., AIA, MAINE LICENSED ARCHITECT: 3850

FLOOR FINISH PLAN Scale: 3/32" = 1'-0" Date: 10/21/11

Designed by: S OUELLETTE Drawn by: I ESHAK Checked by: S OUELLETTE

Drawing No. A102 Project No. PFR0300 HBC-PORTLAND, ME

2 11/16/11 ISSUED FOR CONSTRUCTION 1 10/21/11 ISSUED FOR HANNAFORD 100% REVIEW 0 09/24/11 ISSUED FOR HANNAFORD 100% REVIEW