

APPLIED CODES:
BUILDING AND ENERGY CODES:
 MAINE UNIFORM BUILDING AND ENERGY CODE "MUBEC"
 2009 INTERNATIONAL BUILDING CODE (IBC)
 2009 INTERNATIONAL EXISTING BUILDING CODE (IEBC)
 2009 INTERNATIONAL ENERGY CONSERVATION CODE (IECC)
 ASHRAE 92.1 2007
 ASHRAE 90.1 2007

ACCESSIBILITY:
 MAINE HUMAN RIGHTS ACT
 2010 STANDARDS FOR ACCESSIBLE DESIGN

LIFE SAFETY CODE:
 2009 NATIONAL FIRE PROTECTION ASSOCIATION (NFPA) 101

FIRE PREVENTION CODE:
 2006 NATIONAL FIRE PROTECTION ASSOCIATION (NFPA) 1

FIRE EXTINGUISHER CODE:
 2007 NATIONAL FIRE PROTECTION ASSOCIATION (NFPA) 10

PLUMBING CODE:
 2009 UNIFORM PLUMBING CODE (UPC), WITH EXCLUSIONS AND AMENDMENTS PER MAINE DEPT. OF PROFESSIONAL & FINANCIAL REGULATION 02-395 CHAPTER 4

FUEL GAS CODE:
 2009 NATIONAL FIRE PROTECTION ASSOCIATION (NFPA) 54

LP GAS CODE:
 2008 NATIONAL FIRE PROTECTION ASSOCIATION (NFPA) 58

ELECTRICAL CODE:
 2011 NATIONAL ELECTRICAL CODE (NEC), WITH EXCLUSIONS AND AMENDMENTS PER MAINE DEPT. OF PROFESSIONAL & FINANCIAL REGULATION 02-318 CHAPTER 120

PROJECT DESCRIPTION
 USE GROUP: M MERCANTILE (IBC SECTION 509)
 CONSTRUCTION TYPE: NONCOMBUSTIBLE UNPROTECTED - IIB (IBC SECTION 602)
 AREA LIMITATIONS: UNLIMITED (IBC SECTION 507)
 (FULLY SPRINKLERED BUILDING)

BUILDING GROSS SF: 69,252

FIRE PROTECTION SYSTEM:
 AUTOMATIC SPRINKLER SYSTEM - IBC 903.2.7 AUTOMATIC FIRE SPRINKLER
 REQUIRED IN GROUP M WHEN GROSS SQUARE AREA > 12,000 SF (PROVIDED)

FIRE ALARMS, IBC 907.2.7 FIRE ALARMS REQUIRED
 IN GROUP M WHEN OCCUPANT LOAD > 500 (PROVIDED)

EXIT ANALYSIS
 OCCUPANCY LOAD: IBC TABLE 1004.1.1
 MERCANTILE GRADE FLOOR: 30 GROSS SF
 BUSINESS AREAS: 100 GROSS SF
 INDUSTRIAL (FOOD PREP): 100 GROSS SF
 STORAGE/STOCK/SHIPPING/MECHANICAL/PLATFORM: 300 GROSS SF

GRADE FLOOR:
 SALES FLOOR/PUBLIC AREAS: 49,962 SF OCCUPANCY = 49,962/30 = 1,666
 BUSINESS AREAS: 2,068 SF OCCUPANCY = 2,068/100 = 21
 FOOD PREP AREAS: 5,839 SF OCCUPANCY = 5,839/100 = 59
 STORAGE/STOCK/SHIPPING AREAS: 11,383 SF OCCUPANCY = 11,383/300 = 38

MECHANICAL MEZZANINE*:
 EQUIPMENT PLATFORM AREA: 1,287 SF OCCUPANCY = 1,287/300 = 5

BUSINESS MEZZANINE*:
 BUSINESS AREAS: 2,921 SF OCCUPANCY = 2,921/100 = 30

TOTAL OCCUPANCY LOAD = 1,819 OCCUPANTS

EGRESS WIDTH PER OCCUPANCY: IBC 1005.1
 USE GROUP M WITH SPRINKLER SYSTEMS
 DOORS AND RAMPS: 0.2 INCHES PER OCCUPANT
 1,819 OCCUPANTS x 0.2 INCHES PER OCCUPANT = 364 INCHES REQUIRED
 TOTAL EGRESS WIDTH = 574 INCHES PROVIDED

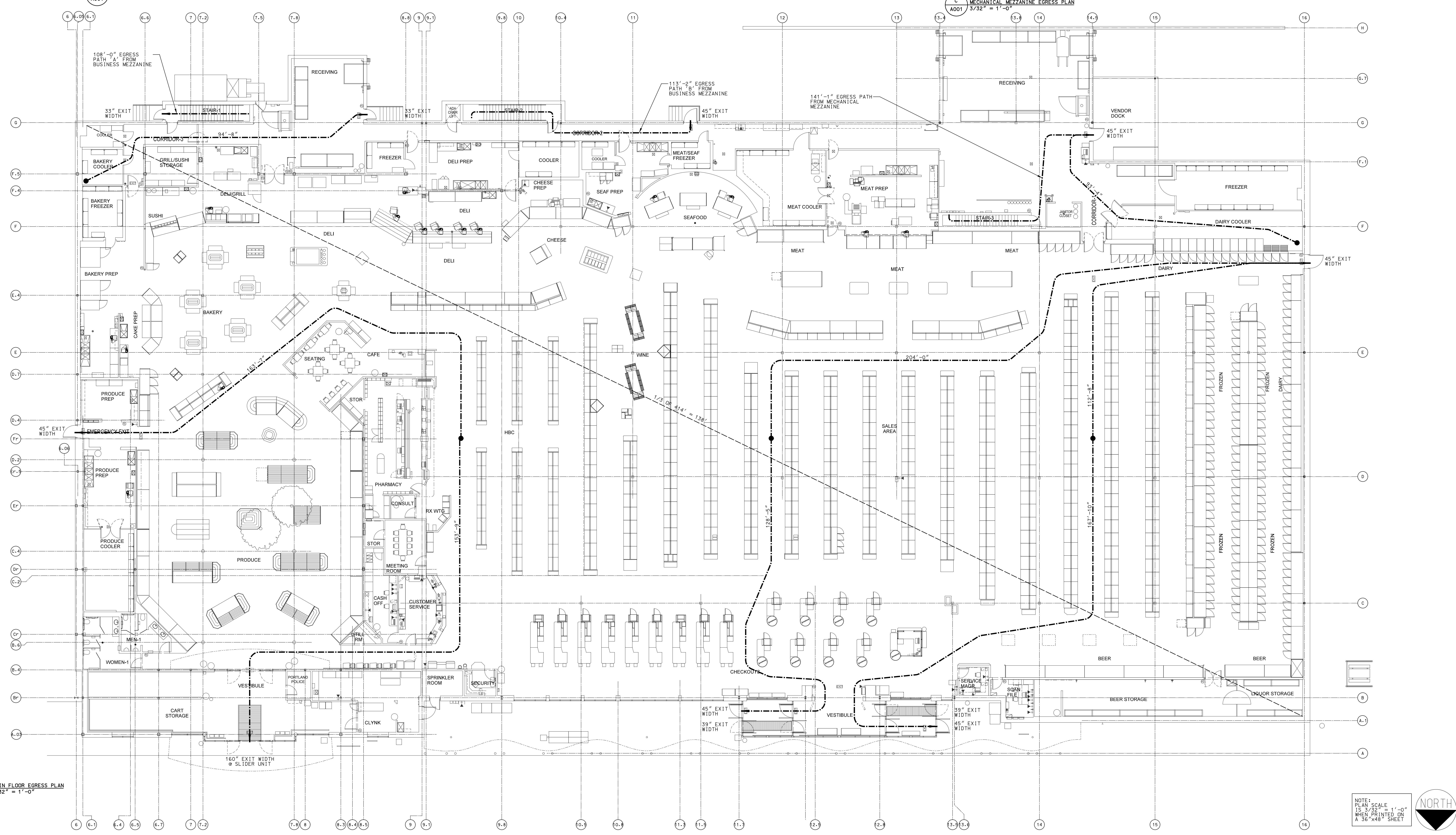
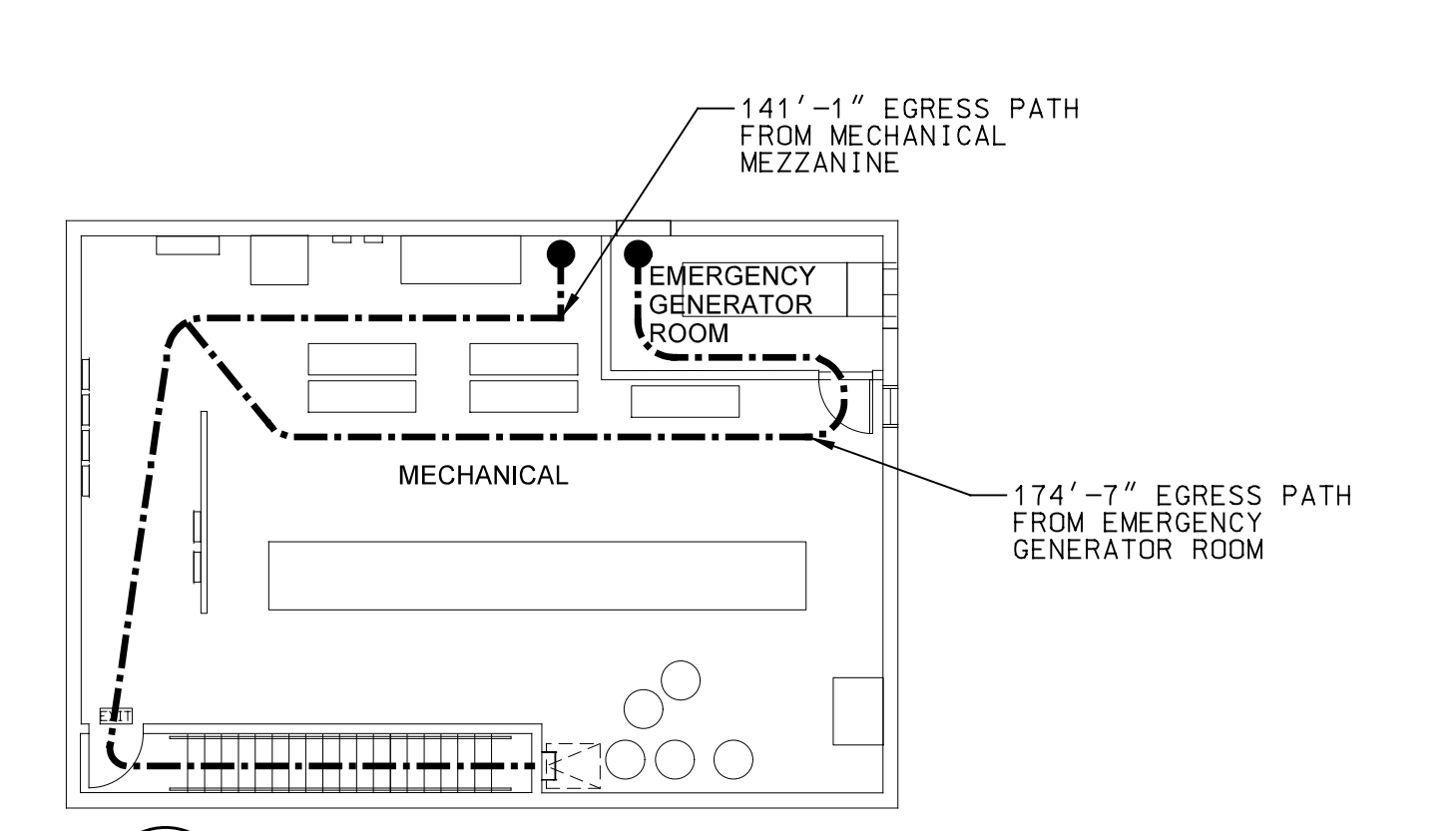
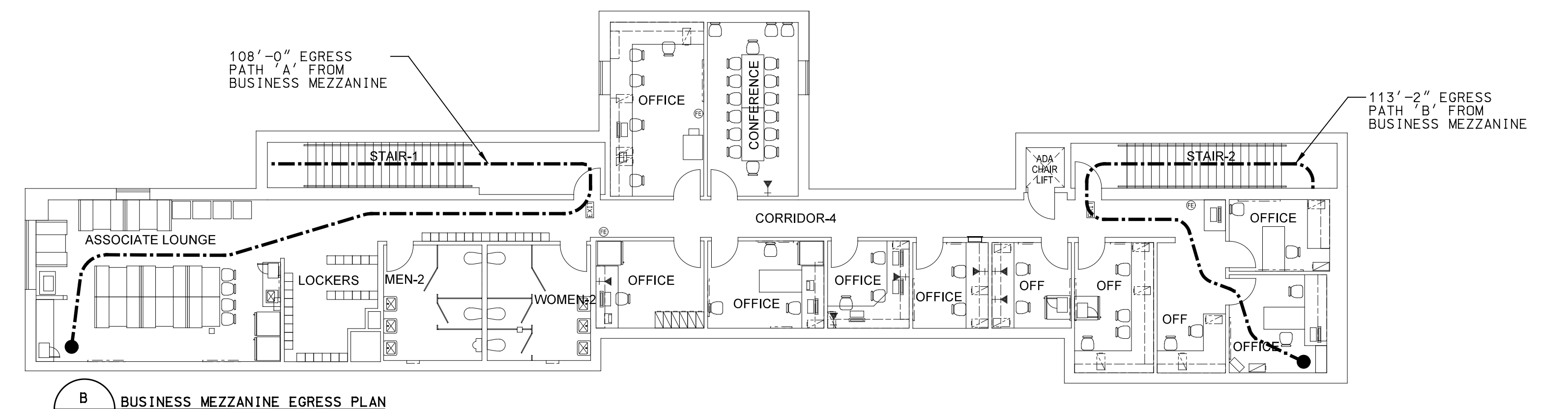
STAIRS: 0.3 INCHES PER OCCUPANT
 35 OCCUPANTS x 0.3 INCHES PER OCCUPANT = 10.5 INCHES REQUIRED
 TOTAL EGRESS WIDTH = 141 INCHES PROVIDED

* AREAS ARE NOT INCLUDED IN BUILDING GROSS SF.

PLUMBING FACILITIES
 1,819 OCCUPANTS = 910 PER SEX

WATER CLOSETS (MALE) 1/500 = 2 PROVIDED 4 WC
 PROVIDED 3 URINAL

WATER CLOSETS (FEMALE) 1/500 = 2 PROVIDED 6 WCS
 LAVATORIES (MALE) 1/750 = 2 PROVIDED 5 LAVS
 LAVATORIES (FEMALE) 1/750 = 2 PROVIDED 5 LAVS
 DRINKING FOUNTAINS 1/1000 = 2 PROVIDED 1 HI/1 LO



NOTE: SCALE
 PLAN SCALE = 3/32" = 1'-0"
 WHEN PRINTED ON A 36" X 48" SHEET

NORTH

Project Title: **REMODEL HANNAFORD SUPERMARKET & PHARMACY STORE #8351 - 295 FOREST AVENUE PORTLAND, MAINE 04101**

Prepared By: **JACOBS**
 ARCHITECT OF RECORD: FLOYD W. MCCOLLUM, JR., AIA
 MAINE LICENSED ARCHITECT: 3850

Scale: 3/32" = 1'-0"
 Date: 10/21/11

Designed by: I ESHAK
 Drawn by: I ESHAK
 Checked by: S OUELLETTE

Drawing No. **A001**
 Project No. **FFYR0300**
 IBC-PORTLAND, ME