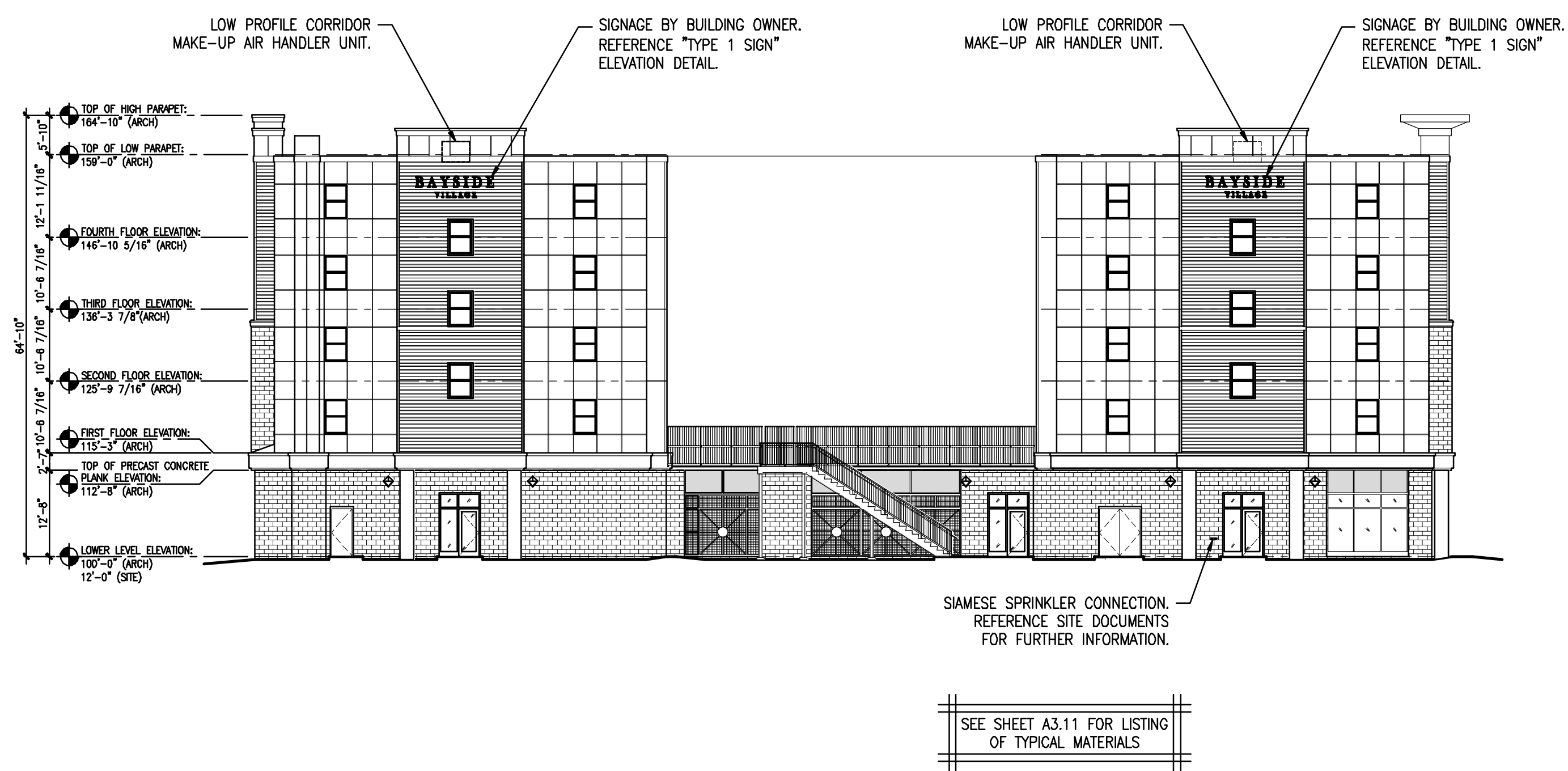




A OVERALL BUILDING ELEVATION - NORTH (FROM MARGINAL WAY)

REFERENCED FROM: SCALE: 1/16" = 1'-0"



B OVERALL BUILDING ELEVATION - WEST (FROM INTERMED BUILDING)

REFERENCED FROM: SCALE: 1/16" = 1'-0"



C OVERALL BUILDING ELEVATION - EAST (FROM MISS PORTLAND DINER)

REFERENCED FROM: SCALE: 1/16" = 1'-0"