

PLAN	
3 5/8" STEEL STUDS W/ 3 1/2" S.A.B.	223
NON-RATED	-
6" STEEL STUDS W/ 3 1/2" + 2 1/2" S.A.B.	226
NON-RATED	-
8" STEEL STUDS W/ 3 1/2" + 2 1/2" S.A.B.	228
NON-RATED	-

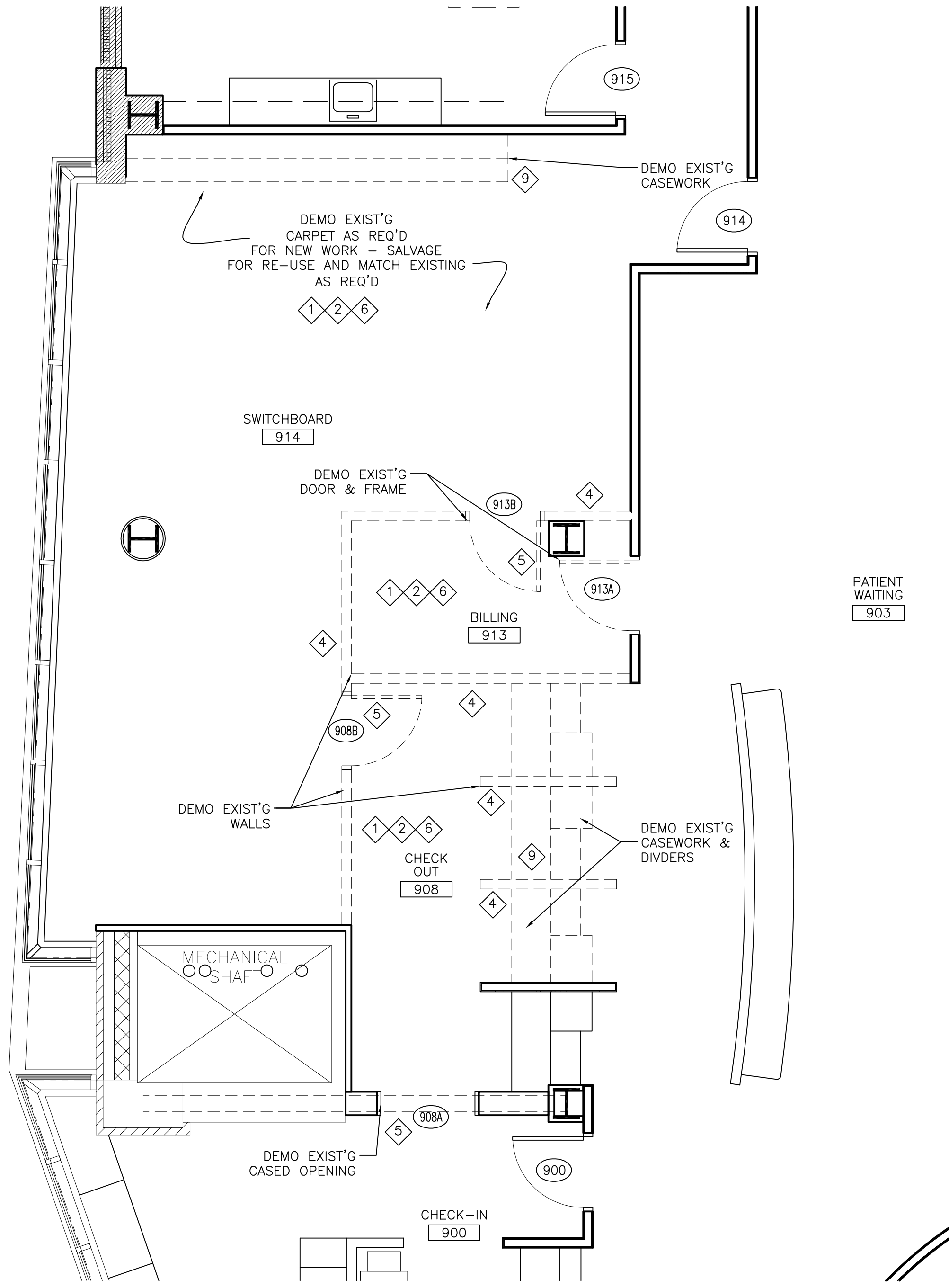
3 PARTITION TYPE
N.T.S.

DEMOLITION KEY:

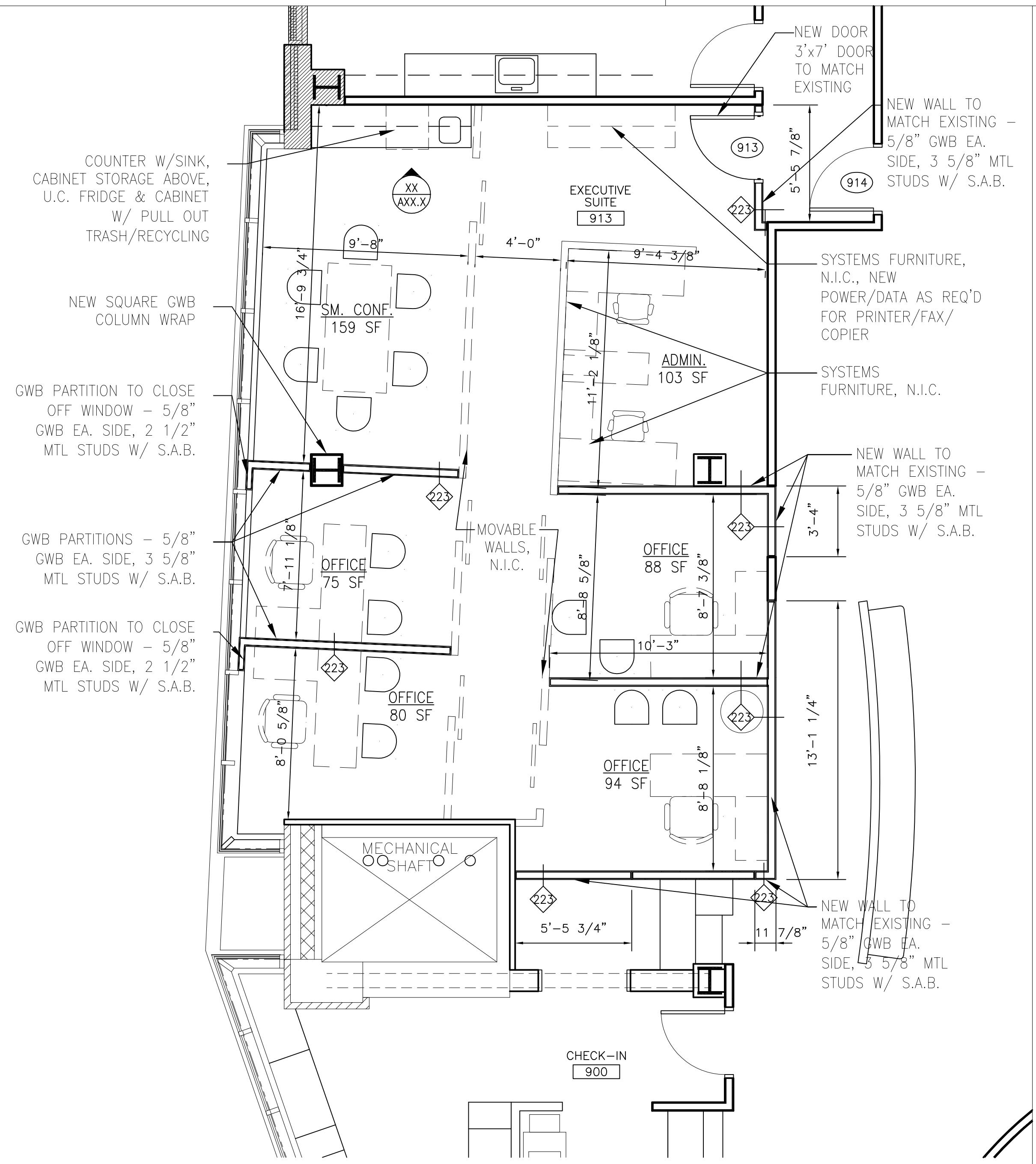
- 1 REMOVE EXISTING FLOOR MATERIAL FROM EXISTING CONC. SLAB OR SUBFLOOR.
- 2 REFER TO MECH., ELECT., AND PLUMBING DEMOLITION DWGS FOR REMOVAL OF HVAC, WIRING & SPRINKLER HEADS.
- 3 REMOVE EXISTING PLUMBING FIXTURES. REFER TO PLUMBING DEMOLITION DWGS.
- 4 REMOVE EXISTING PARTITION.
- 5 REMOVE EXISTING DOOR & FRAME.
- 6 REMOVE EXISTING CEILING/SOFFIT.
- 7 REMOVE ALL FRAMING & DRYWALL SURROUNDS AT EXISTING COLUMNS.
- 8 REMOVE EXISTING INTERIOR WINDOWS.
- 9 REMOVE EXISTING CASEWORK AND/OR SYSTEMS FURNITURE. G.C. TO SALVAGE SYSTEMS FURNITURE FOR RE-USE IN AREAS INDICATED ON DRAWINGS.

GENERAL DEMOLITION NOTES:

1. ALL DEMOLITION WORK SHALL CONFORM TO ALL LOCAL, STATE AND NATIONAL SAFETY CODES.
2. MAINTAIN INTEGRITY OF ALLEXISTING FIRE RATED ASSEMBLIES TO REMAIN, INCLUDING ENCLOSURES AT COLUMNS, STAIRS AND SHAFTS.
3. PROTECT ALL EXISTING FINISHES, MILLWORK AND CONSTRUCTION TO REMAIN.
4. BEFORE STARTING WORK, THE CONTRACTOR SHALL VERIFY EXISTING CONDITIONS, INCLUDING DIMENSIONS AND ELEVATIONS, THE CONTRACTOR SHALL PREPARE A LIST OF EXISTING DAMAGED AREAS, DOCUMENTED BY DATED PHOTOGRAPHS AND SIGNED BY THE PERSON CONDUCTING THE INVESTIGATION TO BE PRESENTED TO THE OWNER FOR VERIFICATION PRIOR TO STARTING DEMOLITION.
5. CONTRACTOR SHALL COORDINATE DEMOLITION OPERATIONS WITH THE OWNER, AND PROCURE PRIOR APPROVAL FOR ALL DEMOLITION PROCEDURES, INCLUDING USE OF BUILDING FACILITIES, PLACEMENT OF DUMPSTERS, REFUSE REMOVAL, AND PHASING.
6. CONTRACTOR SHALL COORDINATE REMOVAL AND STORAGE OF ALL SALVAGED ITEMS WITH THE OWNER.
7. PROTECT AND MAINTAIN THE OPERATION OF ANY EXISTING SYSTEMS TO REMAIN FUNCTIONAL DURING THE PROJECT. PROCURE PRIOR APPROVAL FROM THE OWNER FOR ANY SHUTDOWNS REQUIRED.
8. CONTRACTOR TO VERIFY STRUCTURAL CONDITIONS BEFORE DEMOLITION BEGINS. PROVIDE TEMPORARY OR PERMANENT STRUCTURE AS REQUIRED.
9. MISC. EQUIPMENT OR FURNISHINGS SHALL BE STORED OR REMOVED AT THE DISCRETION OF THE OWNER.
10. REPAIR & PREPARE EXISTING WALLS, FLOORS, AND CEILINGS TO RECEIVE NEW FINISHES.
11. WHERE PLUMBING FIXTURES ARE REMOVED, EXISTING PIPING SHALL BE CAPPED OR REMOVED.
12. WHERE ELECTRICAL FIXTURES ARE REMOVED, EXISTING WIRING SHALL BE REMOVED BACK TO DISTRIBUTION PANEL OR ELEC. J-BOX. REFER TO ELECTRICAL DEMOLITION DRAWINGS.
13. AFTER DEMOLITION, ALL ABANDONED PENETRATIONS SHALL BE PATCHED AND FIRE PROTECTED ACCORDING TO CODE.
14. CONTRACTOR TO PROTECT AREAS TO REMAIN OPERATIONAL FROM DUST & DEBRIS. CONTRACTOR IS RESPONSIBLE FOR MAINTAINING AND CLEANING ANY AREAS EXPOSED TO DUST OR DEBRIS FROM DEMOLITION ACTIVITIES.



2 DEMO FLOOR PLAN
1/8" = 1'-0"



1 NEW FLOOR PLAN
1/8" = 1'-0"

GENERAL NOTES:

1. PARTITION DIMENSIONS ARE TO FACE OF PARTITION OR CENTERLINE OF COLUMN UNLESS NOTED OTHERWISE. DIMENSIONS FROM INTERIOR OF EXISTING EXTERIOR WALL ARE FROM FACE OF DRYWALL.
2. PARTITION TYPES ARE TYPE 223 UNLESS NOTED OTHERWISE.
3. SOLID WOOD CHAIR RAIL TYPICAL @ ALL EXAM ROOMS, OFFICES, WAITING/RECEPTION AREAS AND CORRIDORS. MATCH EXISTING CHAIR RAIL IN NEW AREAS AS REQUIRED.
4. PROVIDE CORNER GUARDS @ ALL OUTSIDE CORNERS IN WAITING ROOMS, CORRIDORS AND PUBLIC AREAS TO 4'-0" A.F.F., U.N.O. TYP.

Mark	Date	Description

Project Status

PERMIT

05.22.2014

Drawing Title
**DEMOLITION PLAN,
FLOOR PLAN &
PARTITION TYPE**

Scale: 1/8" = 1'-0"

Drawing Number

A10.1