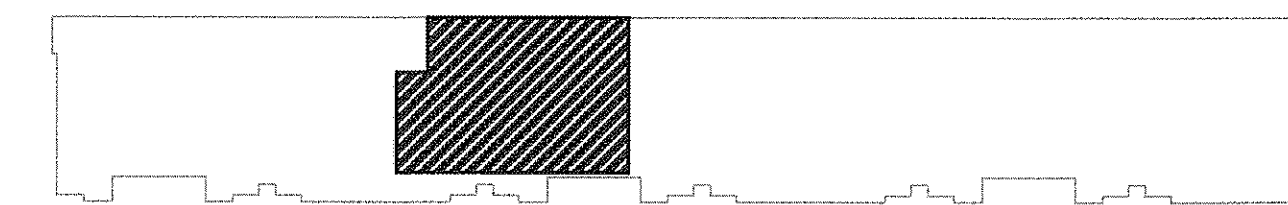


2009 IBC CODE DATA	
APOTHECARY BY DESIGN - RETAIL PHARMACY AND NUTRACEUTICAL SALES	
PORTLAND, MAINE	
#010213	
USE GROUP CLASSIFICATION	SECTION 309 MERCANTILE, GROUP M
TYPE OF CONSTRUCTION	TYPE III (200)
OCCUPANT LOAD	OCCUPANT LOAD 93 OCCUPANTS
	AREAS ON THE FLOOR 60 GROSS
	BASEMENT AND GRADE FLOOR AREAS 30 GROSS
	STORAGE, STOCK, SHIPPING AND RECEIVING AREAS 300 GROSS
	MECHANICAL 300 GROSS
ACTUAL BUILDING AREA	4,265 SF
TABLE 503 BUILDING AREA LIMITATION	EXISTING (EXISTING 4 STORIES/ALLOWABLE 18,500 SF PER FLOOR)
506.2 STREET FRONTAGE INCREASE	EXISTING (1 ADDITIONAL STORY / 200% INCREASE)
506.3 AUTOMATIC SPRINKLER SYSTEM INCREASE	200% W/ AUTOMATIC SPRINKLERS
ALLOWABLE BUILDING AREA	EXISTING
ACTUAL BUILDING HEIGHT	EXISTING 4 STORIES
ALLOWANCE BUILDING HEIGHT	1 ADDITIONAL STORY
FIRE SUPPRESSION	TOTAL BUILDING AUTOMATIC WATER SPRINKLER SYSTEM
PRIMARY STRUCTURAL FRAME	EXISTING 1 HOUR
EXTERIOR/INTERIOR BEARING WALL	2 HOURS EXTERIOR / 0 HOUR EXTERIOR
EXTERIOR/INTERIOR NON-BEARING WALL	0 HOUR EXTERIOR / 0 HOUR INTERIOR
FLOOR CONSTRUCTION	EXISTING 1 HOUR
ROOF/CEILING CONSTRUCTION	0 HOUR
SHAFTS	2 HOUR, 4 OR MORE STORIES
CORRIDORS TABLE 1018.1	0 HOUR
USE SEPARATION	EXISTING 2 HOURS
MECHANICAL ROOMS/LAUNDRY ROOMS >100 SF	1 HOUR
DEAD END CORRIDORS	50 FEET W/ AUTOMATIC SPRINKLERS
TRAVEL DISTANCE 1016.1	250 FEET MAX
COMMON PATH OF TRAVEL	30 INCH AISLEWAYS / 75 FEET MAX W/ NOT MORE THAN 50 OCCUPANTS
CORRIDOR WIDTH	44 INCHES MAX
FLAME SPREAD RATINGS - INTERIOR WALLS AD CEILINGS FINISH REQUIREMENTS	
EXIT ENCLOSURES AND EXIT PASSAGEWAYS	CLASS A, B, OR C W/ AUTOMATIC SPRINKLERS
CORRIDORS	CLASS A, B, OR C W/ AUTOMATIC SPRINKLERS
ROOMS AND ENCLOSED SPACES	CLASS A, B, OR C W/ AUTOMATIC SPRINKLERS
INTERIOR FLOOR FINISH REQUIREMENTS	
EXIT ENCLOSURES, EXIT PASSAGEWAYS AND CORRIDORS	CLASS I OR II W/ AUTOMATIC SPRINKLERS
ALL AREAS	DOCF- 1 PILL TEST
GENERAL NOTES	1. ALL PENETRATIONS OF FIRE RATED WALLS AND FLOORS SHALL BE SEALED WITH PROPER APPROVED MATERIALS. 2. ALL WORK SHALL CONFIRM TO LOCAL AND STATE CODES, ORDINANCES, REQUIREMENTS AND ACCESSIBILITY PER A.D.A.A.G.

2009 NFPA CODE DATA	
APOTHECARY BY DESIGN - RETAIL PHARMACY AND NUTRACEUTICAL SALES	
PORTLAND, MAINE	
#010213	
USE GROUP CLASSIFICATION	CHAPTER 37 EXISTING MERCANTILE, CLASS B (OVER 3 STORIES)
TYPE OF CONSTRUCTION	TYPE III (200)
OCCUPANT LOAD	SALES AREA - 71 OCCUPANTS / STAFF AREA - 22 OCCUPANTS / TOTAL OCCUPANTS - 93 OCCUPANTS
	SALES AREA, STREET LEVEL 30 SF
	OFFICE 100 SF
	STORAGE, SHIPPING, RECEIVING 300 SF
ACTUAL BUILDING AREA	4,265 SF
ACTUAL BUILDING HEIGHT	EXISTING 4 STORIES
ALLOWANCE BUILDING HEIGHT	EXISTING 4 STORIES
FIRE SUPPRESSION	TOTAL BUILDING AUTOMATIC WATER SPRINKLER SYSTEM
EXTERIOR/INTERIOR BEARING WALLS	2 HOUR EXTERIOR / 0 HOUR INTERIORS
STRUCTURAL ELEMENTS	0 HOUR
FLOOR/CEILING ASSEMBLIES	0 HOUR
ROOF/CEILING ASSEMBLIES	0 HOUR
EXTERIOR/INTERIOR NONBEARING WALLS	0 HOUR
FIRE BARRIER	2 HOURS SEPARATING PARKING STRUCTURES
SMOKE PROOF ENCLOSURE	2 HOURS
SHAFTS	2 HOUR
SEPARATION OF USE	1 HOUR
CORRIDOR WALLS	1 HOUR
MECHANICAL ROOMS	1 HOUR
STORAGE/LAUNDRY ROOMS >100SF	2 HOURS LOW AND ORDINARY / 3 HOURS HIGH HAZARD
STORAGE ROOM > 50 SF BUT LESS THAN 100 SF	SMOKE PARTITION WITH A 1 HOUR FIRE RESISTANT RATING
COMMON PATH OF TRAVEL (MAX)	100 FEET
DEAD END CORRIDOR (MAX)	50 FEET W/ AUTOMATIC SPRINKLERS
TRAVEL DISTANCE TO EXITS (MAX)	250 FEET
CORRIDOR WIDTH (MIN)	44 INCHES
INTERIOR WALLS AND CEILING FINISHES	
EXIT ENCLOSURES	CLASS A OR B W/ AUTOMATIC SPRINKLERS
LOBBIES AND CORRIDORS	CLASS A OR B W/ AUTOMATIC SPRINKLERS
ROOMS, ENCLOSED SPACES	CLASS A OR B W/ AUTOMATIC SPRINKLERS
INTERIOR FLOOR FINISH	CLASS I OR II W/ AUTOMATIC SPRINKLERS
GENERAL NOTES	1. ALL PENETRATIONS OF FIRE RATED WALLS AND FLOORS SHALL BE SEALED WITH PROPER APPROVED MATERIALS. 2. ALL WORK SHALL CONFIRM TO LOCAL AND STATE CODES, ORDINANCES, REQUIREMENTS AND ACCESSIBILITY PER A.D.A.A.G.

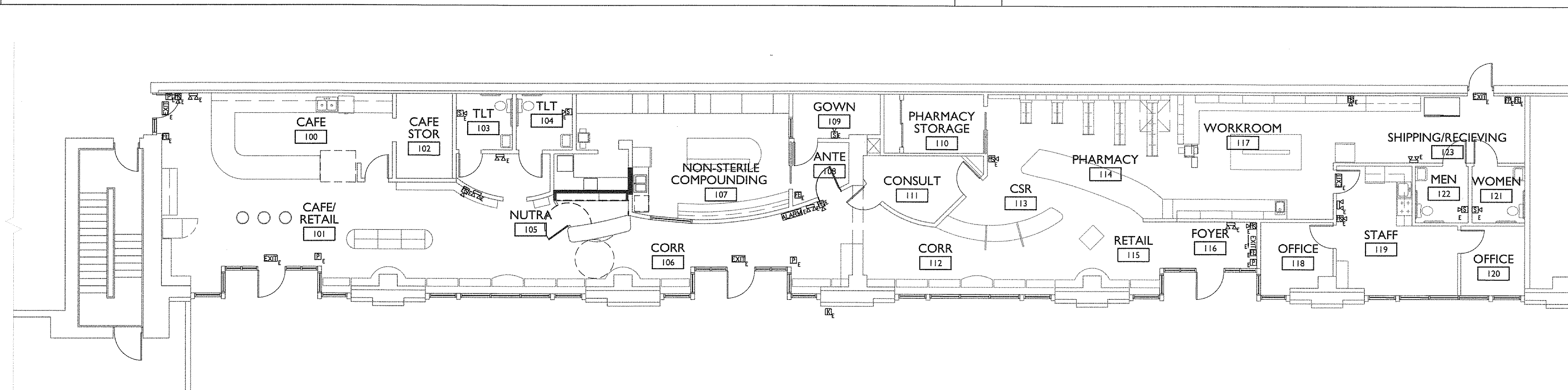
III NFPA 2009 CODE REVIEW



AREA OF RENOVATION

FI IBC 2009 CODE REVIEW

FII KEY PLAN



LIFE SAFETY LEGEND

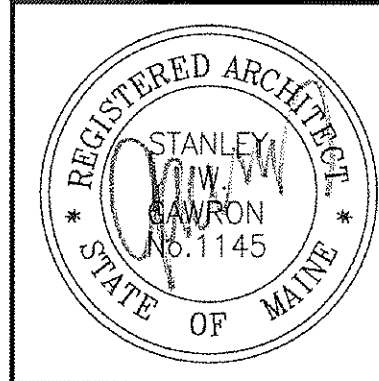
- ALARM NOTIFICATION PANEL
- EXIT DIRECTIONAL EXIT SIGNAGE
- EXIT EXIT SIGNAGE
- FE FIRE EXTINGUISHER
- FSK FIRE ALARM VISUAL STROBE - 110cd UNIT
- FSK FIRE ALARM AUDIO/VISUAL STROBE - (15 db)/STROBE (110cd) UNIT
- ELB EMERGENCY LIGHT WITH BATTERY BACK UP
- FP FIRE ALARM PULL STATION
- SD CEILING MOUNTED SMOKE DETECTOR
- NE "NOT AN EXIT" SIGN
- KB KNOX BOX

NOTE:

1. ALL LIFE SAFETY DEVICES ARE EXISTING FROM THE 2008 ORIGINAL BUILD-OUT OF THE TENANT SUITE.

AI LIFE SAFETY PLAN, EXISTING CONDITIONS PLAN

A18 LEGEND



**APOTHECARY BY DESIGN -
 RETAIL PHARMACY & NON-STERILE
 COMPOUNDING LAB
 84 MARGINAL WAY, PORTLAND, MAINE**

REVISIONS		
#	DATE	DESCRIPTION

DATE	6.28.13
PROJECT #	010213
DRAWN BY:	LAP
CHECKED BY:	MET
DRAWING SCALE	N.A.

SHEET TITLE
 CODE REVIEW,
 LIFE SAFETY PLAN

G102