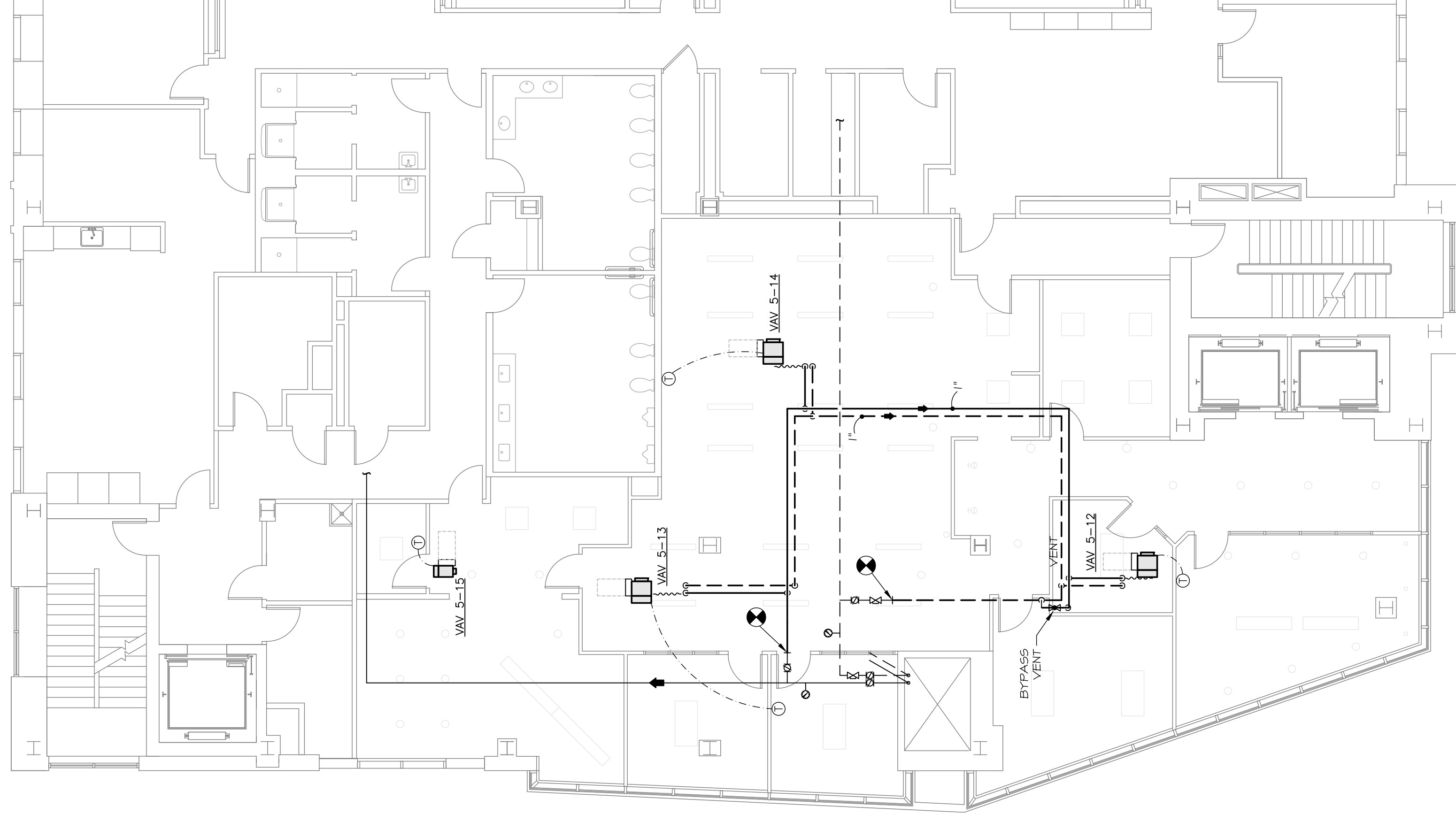




2 MECHANICAL PIPING PLAN - FIFTH FLOOR
SCALE: 1/8" = 1'-0"



NOTE: ALL BRANCH
PIPING TO EACH
VAV COIL TO BE 3/4"

1 MECHANICAL DUCTWORK PLAN - FIFTH FLOOR
SCALE: 1/8" = 1'-0"

