

ROOFTOP PACKAGE A/C SCHEDULE

TAG	MANUFACTURER	MODEL	TOTAL COOLING (BTU/HR)	SENSIBLE COOLING (BTU/HR)	HEATING INPUT (BTU/HR)	HEATING OUTPUT (BTU/HR)	AIRFLOW (CFM)	ESP (IN W.C.)	SUPPLY FAN (HP)	EXHAUST FAN (HP)	DIMENSIONS	OPERATING WEIGHT	ELECTRICAL	LOCATION
AC-1	CARRIER	4828J090YK610PS	1,095,780	830,110	975,000	790,000	35,000	2	60	30	41'6"L X 8'2"W X 6'11"H	13,532 LBS	460V 3 PH 286.9 MCA 350.0 MOC	ROOF
AC-2	CARRIER	4828J090YK610PS	1,095,780	830,110	975,000	790,000	35,000	2	60	30	41'6"L X 8'2"W X 6'11"H	13,532 LBS	460V 3 PH 286.9 MCA 350.0 MOC	ROOF
AC-3	CARRIER	4828J090YK610PS	1,095,780	830,110	975,000	790,000	35,000	2	60	30	41'6"L X 8'2"W X 6'11"H	13,532 LBS	460V 3 PH 286.9 MCA 350.0 MOC	ROOF
AC-4	CARRIER	48PGE16HD-6--	193,100	143,300	310,000	251,000	6,000	2	7 1/2	N/A	7'4"L X 9'0"W X 4'3"H	2,284 LBS	460V 3PH 40.8 MCA 50 MOC	ROOF
AC-5	CARRIER	48PGE16HD-6--	193,100	143,300	310,000	251,000	6,000	2	7 1/2	N/A	7'4"L X 9'0"W X 4'3"H	2,284 LBS	460V 3PH 40.8 MCA 50 MOC	ROOF

BOILER SCHEDULES

TAG	MANUFACTURER	MODEL	OUTPUT (BTU/HR)	INPUT (BTU/HR)	DIMENSIONS	FLUE SIZE	WEIGHT	ELECTRICAL	LOCATION
B-1	BUDERUS	G515/7	711,000	995,000	62 1/4"L X 33 1/2"W X 52 1/4" H	10"	3,300 LBS	120V 1 PH. 1/3 HP	BOILER ROOM
B-2	BUDERUS	G515/7	711,000	995,000	62 1/4"L X 33 1/2"W X 52 1/4" H	10"	3,300 LBS	120V 1 PH. 1/3 HP	BOILER ROOM

FAN SCHEDULES

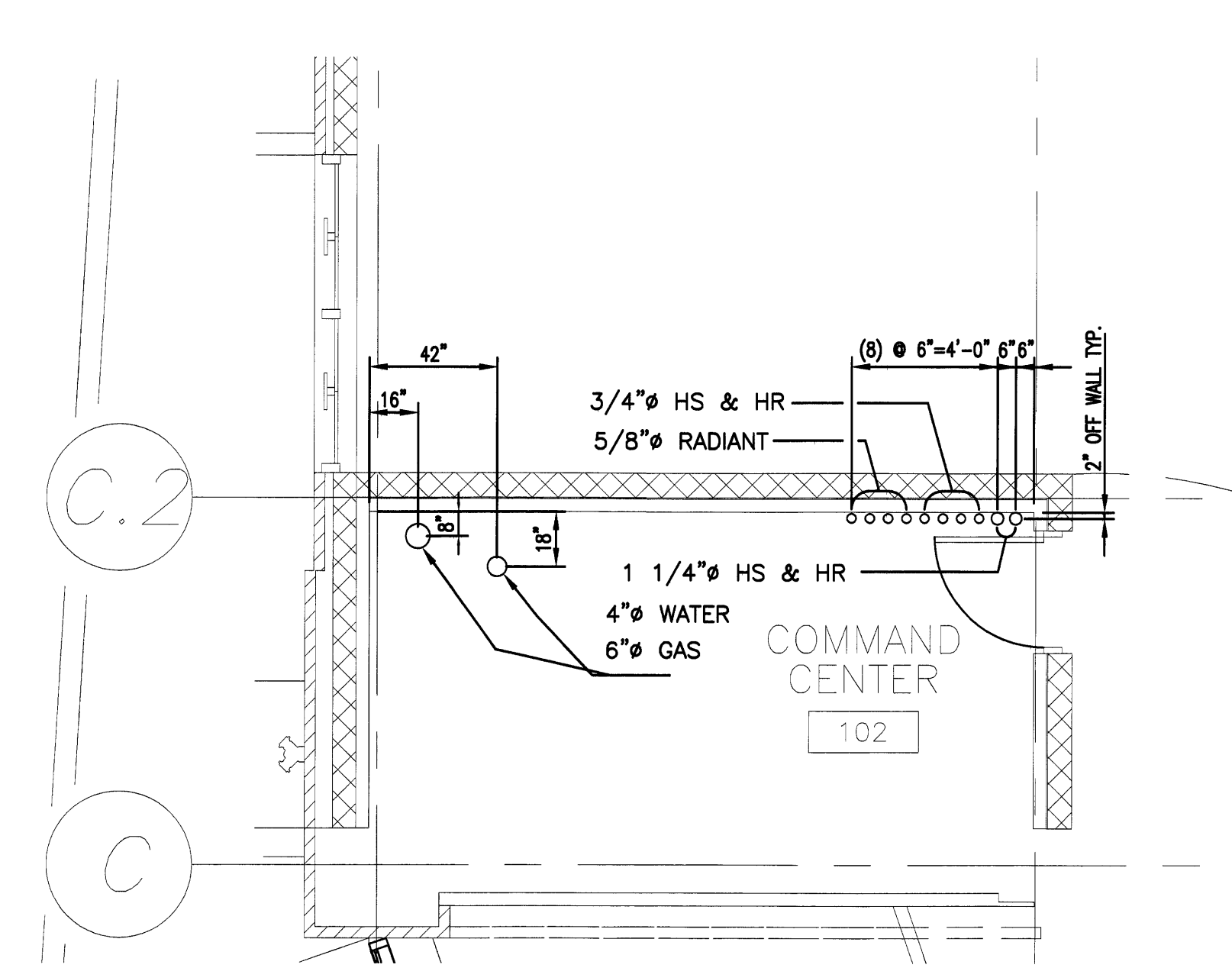
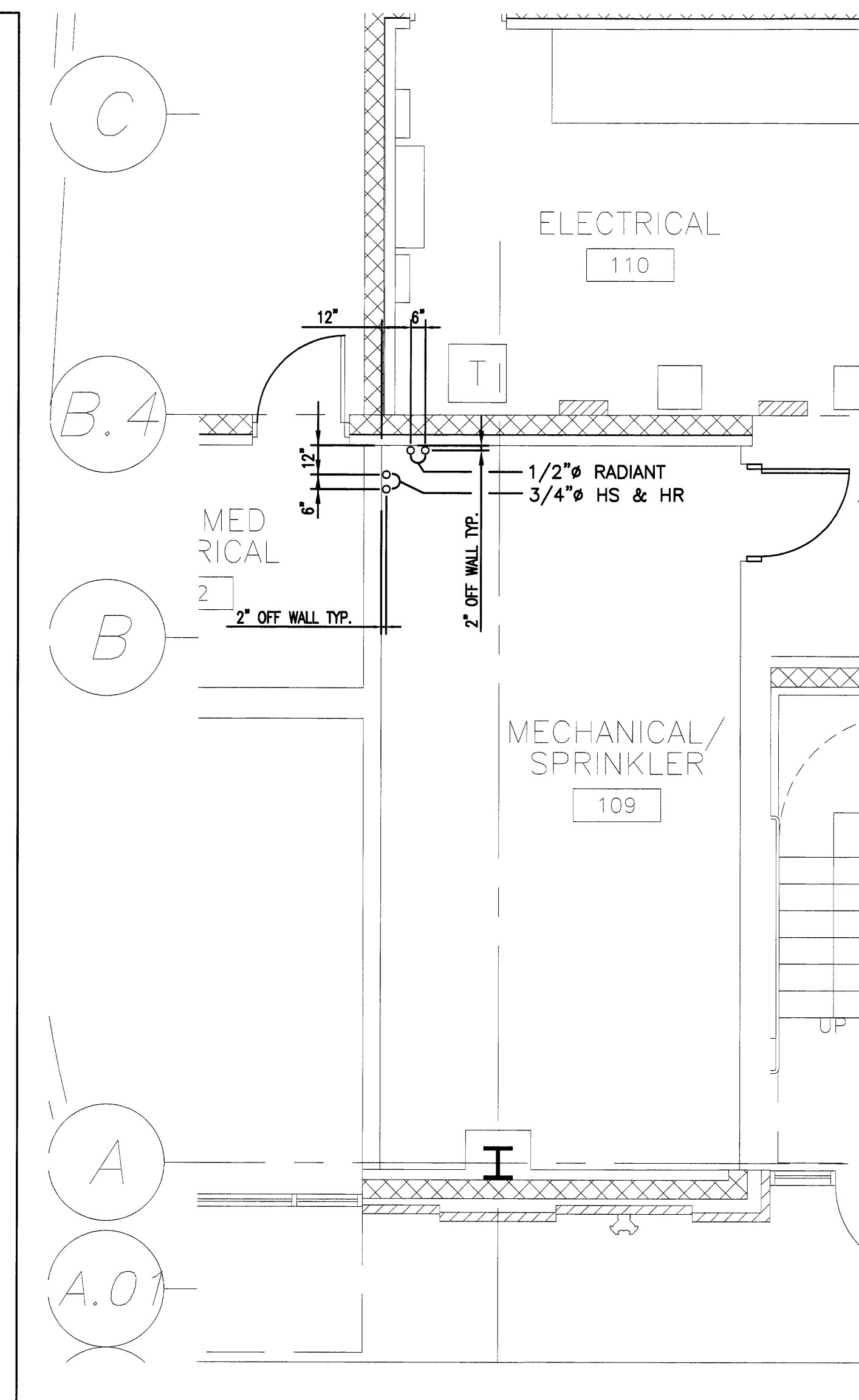
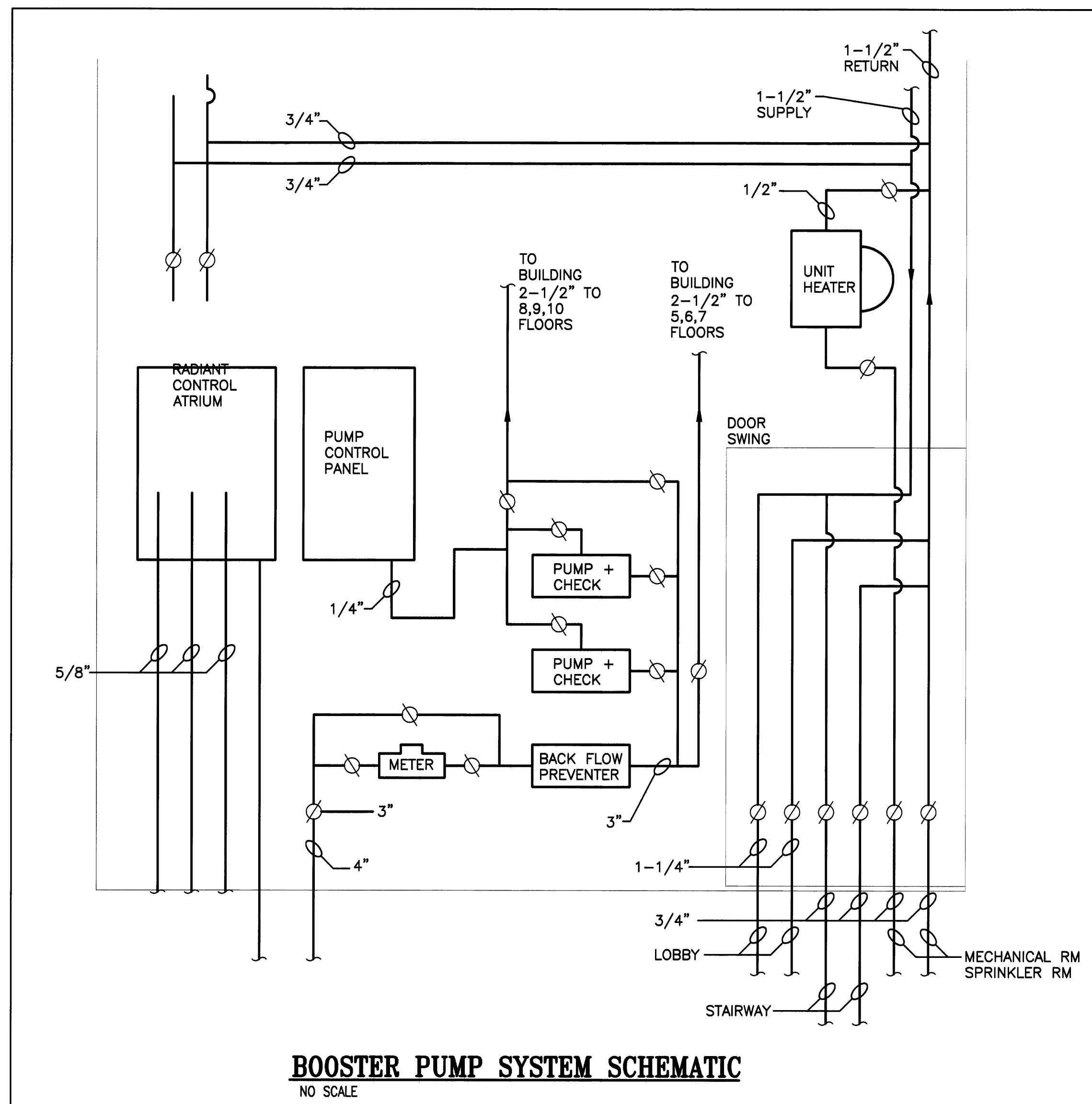
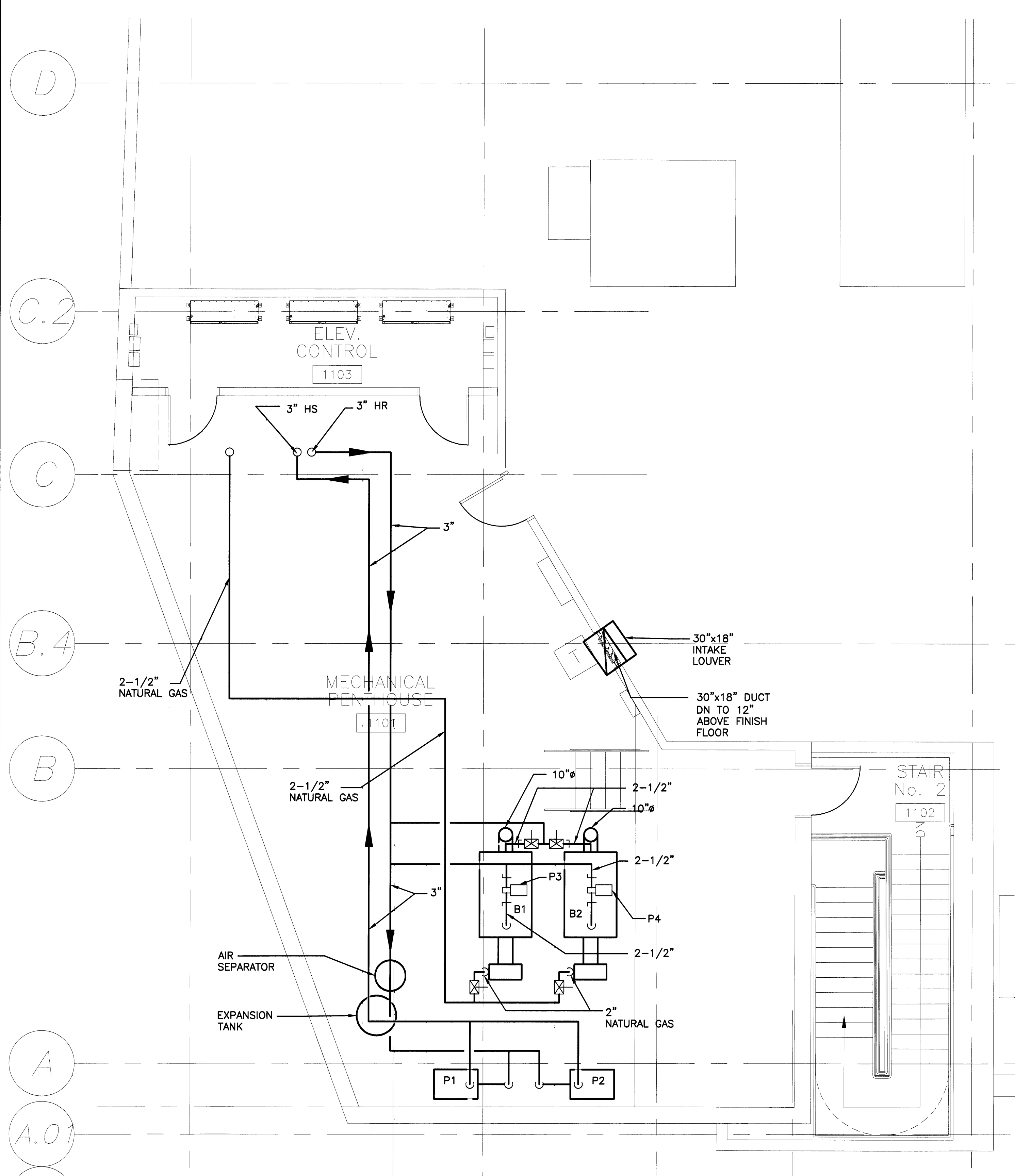
TAG	MANUFACTURER	MODEL	AIRFLOW (CFM)	ESP (IN W.C.)	FAN RPM	MOTOR (HP)	DIMENSIONS	OPERATING WEIGHT	ELECTRICAL	LOCATION
SA-1	GREENHECK	SWB-236-200	25,000	2.5	1,047	20	60 7/8"L X 55 3/8"W X 83 1/8"H	1,170	460V 3PH 27.0FLA	ROOF
SA-2	GREENHECK	SWB-236-201	25,000	2.5	1,047	20	61 7/8"L X 55 3/8"W X 83 1/8"H	1,171	460V 3PH 27.0FLA	ROOF
EF-1	PENN	DX16B	4350	1.5	VARIABLE	3	39"W X 31"H	131	460V 3PH	ROOF
EF-2	PENN	DX14B	2400	1.5	VARIABLE	1 1/2	33 1/2"W X 29"H	98	460V 3PH	ROOF
EF-3	PENN	DX16B	5100	1.5	VARIABLE	3	39"W X 31"H	131	460V 3PH	ROOF

UNITARY HEATER SCHEDULES

TAG	MANUFACTURER	MODEL	OUTPUT (BTU/HR)	FLOW (GPM)	FAN HP	ELECTRICAL	LOCATION
UH-1	MODINE	HC-24-01	16,200	1.7	1/25	115V 1PH	ROOM 102
CUH-1	MODINE	CW06-6	44,300	4.43	1/20	115V 1PH	STAIR 104
CUH-2	MODINE	CW06-6	44,300	4.43	1/20	115V 1PH	STAIR 106
CUH-3	MODINE	CW06-2	20,100	1	1/30	115V 1PH	LOBBY 203
CUH-4	MODINE	CW06-2	20,100	1	1/30	115V 1PH	LOBBY 303
CUH-5	MODINE	CW06-2	20,100	1	1/30	115V 1PH	LOBBY 403

CIRCULATOR SCHEDULES

TAG	MANUFACTURER	MODEL	FLOW (GPM)	FT HD	HP	RPM	ELECTRICAL	LOCATION
P-1	B&G	SERIES 1510 2-1/2AB	174	40	3	VARIABLE	460V 3PH	BOILER ROOM
P-2	B&G	SERIES 1510 2-1/2AB	174	40	3	VARIABLE	460V 3PH	BOILER ROOM
P-3	B&G	SERIES 60 2X2X5-1/4	72	10	1/2	1800	460V 3PH	BOILER ROOM
P-4	B&G	SERIES 60 2X2X5-1/5	72	10	1/2	1800	460V 3PH	BOILER ROOM
P-5	TACO	007-IFC	3	10	1/15	3250	115V 1PH	ROOM 102
P-6	TACO	007-IFC	3	10	1/15	3250	115V 1PH	ROOM 103
P-7	TACO	007-IFC	3	10	1/15	3250	115V 1PH	ROOM 106
P-8	TACO	007-IFC	3	10	1/15	3250	115V 1PH	ROOM 109
P-9	TACO	007-IFC	3	10	1/15	3250	115V 1PH	5th Floor Column D4
P-10	TACO	007-IFC	3	10	1/15	3250	115V 1PH	5th Floor Column D5
P-11	TACO	007-IFC	3	10	1/15	3250	115V 1PH	5th Floor Column D6
P-12	TACO	007-IFC	3	10	1/15	3250	115V 1PH	5th Floor Column E4
P-13	TACO	007-IFC	3	10	1/15	3250	115V 1PH	5th Floor Column E5
P-14	TACO	007-IFC	3	10	1/15	3250	115V 1PH	5th Floor Column E6
P-15	BERKLEY	BZTPMS	150	50 (PSI)	3	VARIABLE	460V 3PH	ROOM 102
P-16	BERKLEY	BZTPMS	151	50 (PSI)	3	VARIABLE	460V 3PH	ROOM 102



REV.	100% CD	07/19/07
	DESCRIPTION	DATE

STATE OF MAINE  
DANIEL D. THAYER  
LICENSED MECHANICAL ENGINEER

DESIGN/BUILD/MAINTAIN  
**THAYER CORPORATION**  
1400 Hotel Road, P.O. Box 2058  
AUBURN, MAINE 04211  
Tel. (207)782-4197 Fax (207)782-1064

PROJECT: 84 MARGINAL WAY  
PORTLAND, MAINE

PART PLAN, SCHEDULES & DETAIL

SHEET TITLE: 1/8"=1'-0"  
SCALE: PROJECT MANAGER: ADK  
JOB CAP/DRAWN: MAS  
E OF RECORD: D.THAYER,P.E.  
THAYER CAD FILE: MTT.D

DATE: 04/27/07  
SHEET No. M13.0