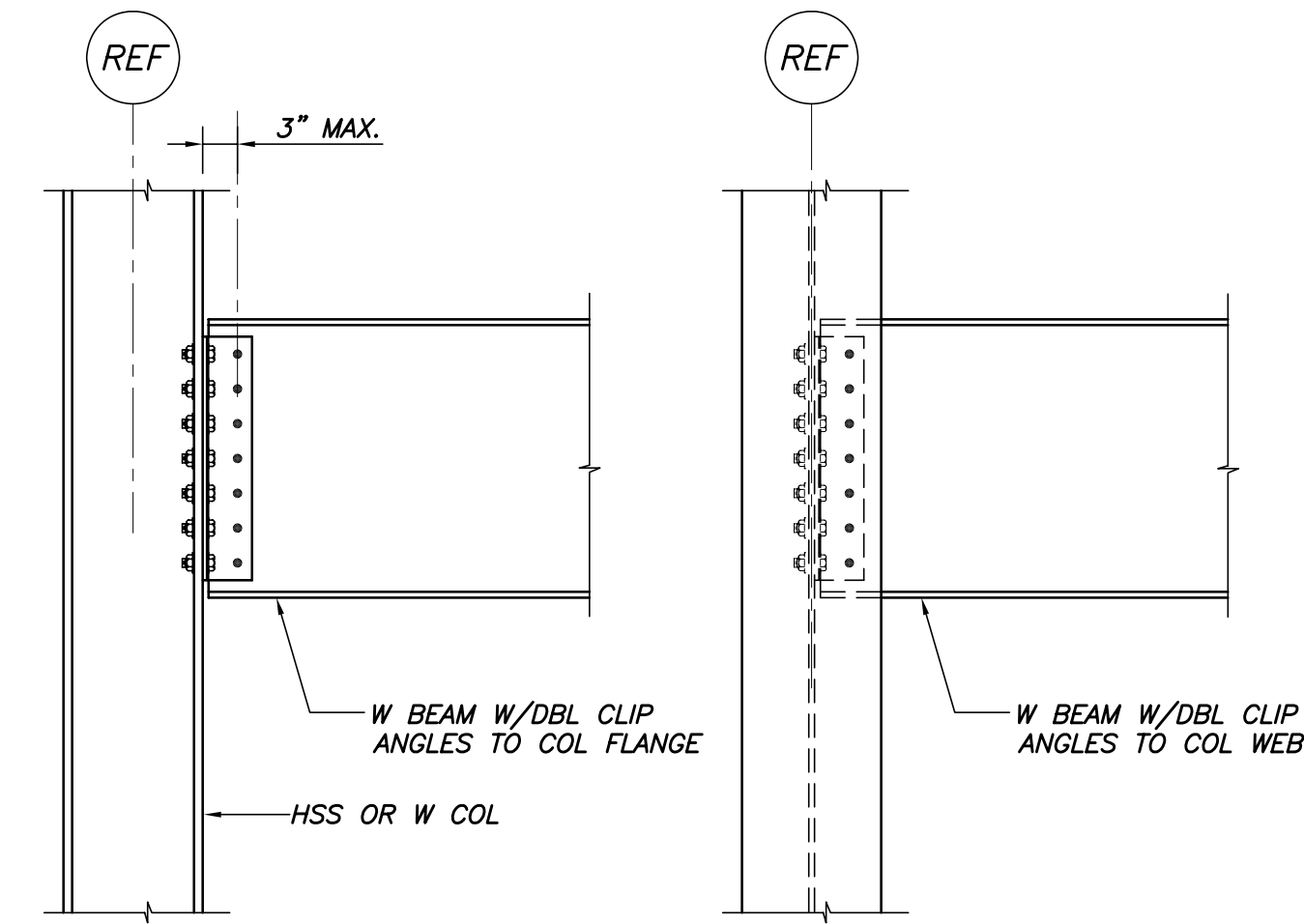
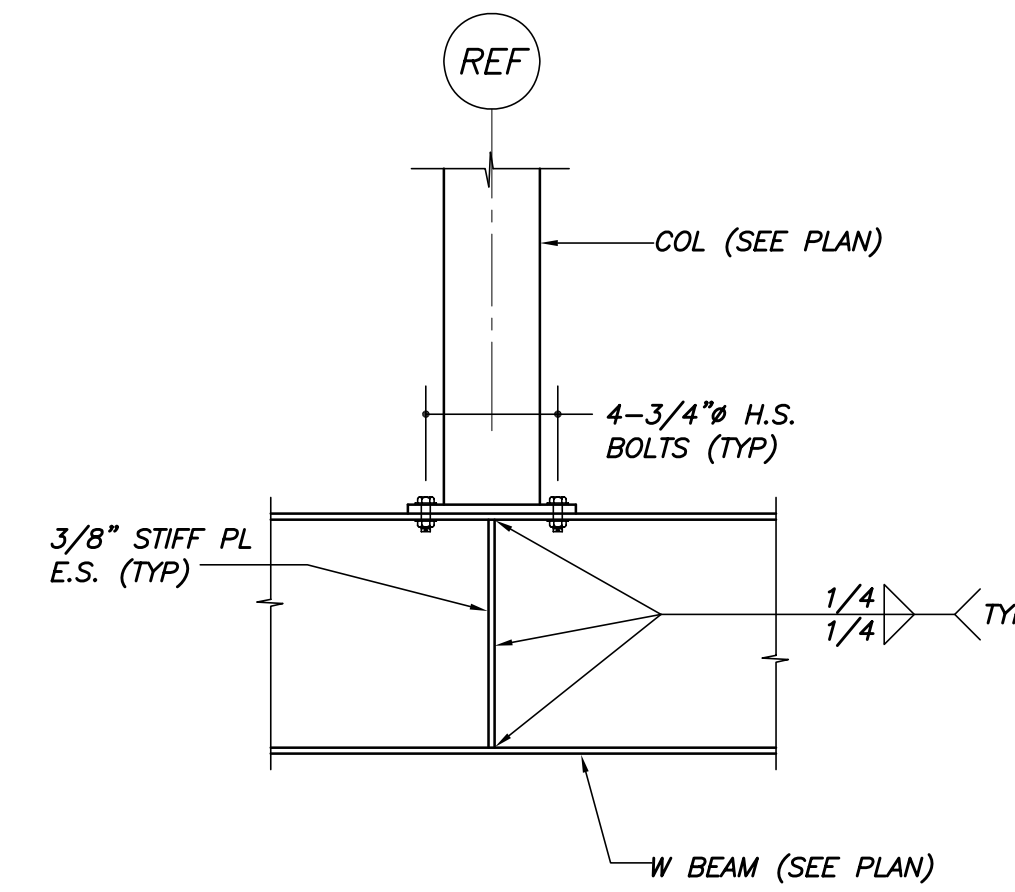


TYP COMPOSITE DECK DETAILS
N.T.S.



TYP BEAM/COL CONN DETAILS
N.T.S.

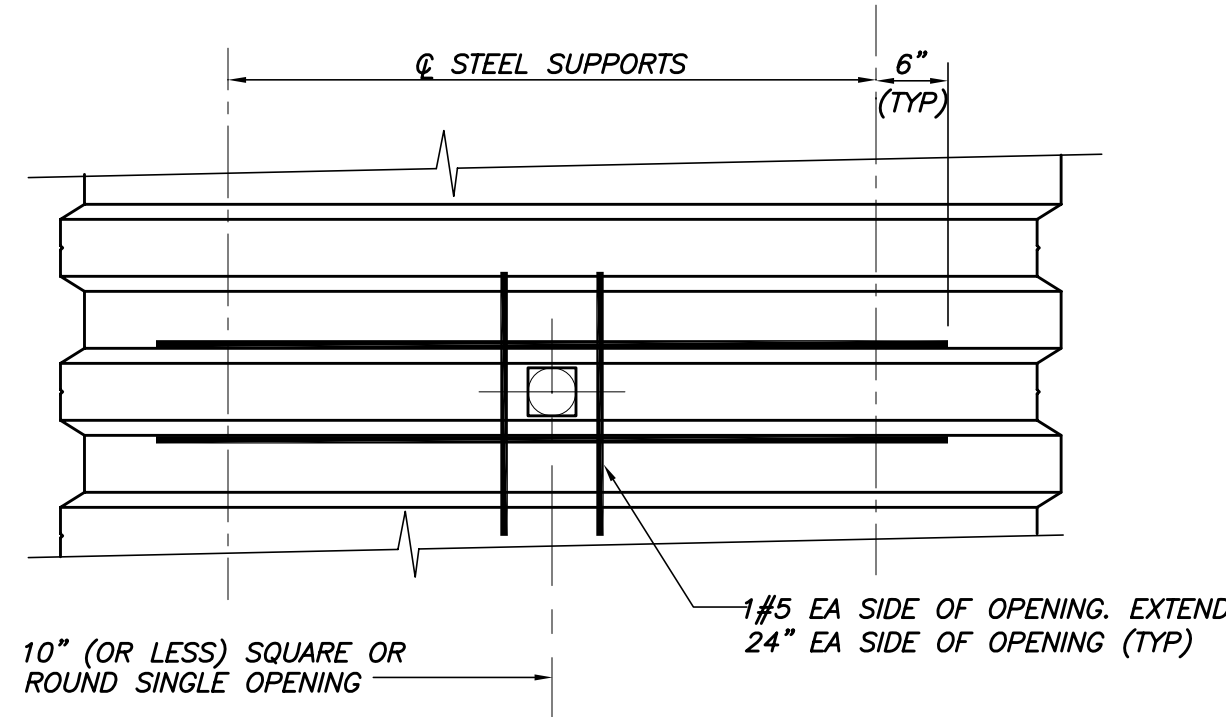


TYP COL TRANSFER DETAIL
N.T.S.

SIMPLE SHEAR BEAM CONN. SCHEDULE			
BEAM SIZE	DESIGN REACTION	MINIMUM NO BOLTS 1 SIDED CONNECTION	MINIMUM NO BOLTS 2 SIDED CONNECTION
WB	21k	2	2
W10	15k	2	2
W12	20k	3	2
W14	25k	3	2
W16	39k	4	3
W18	43k	5	3
W21	59k	5	4
W24	65k	6	4
W27	72k	7	5
W30	92k	7	5

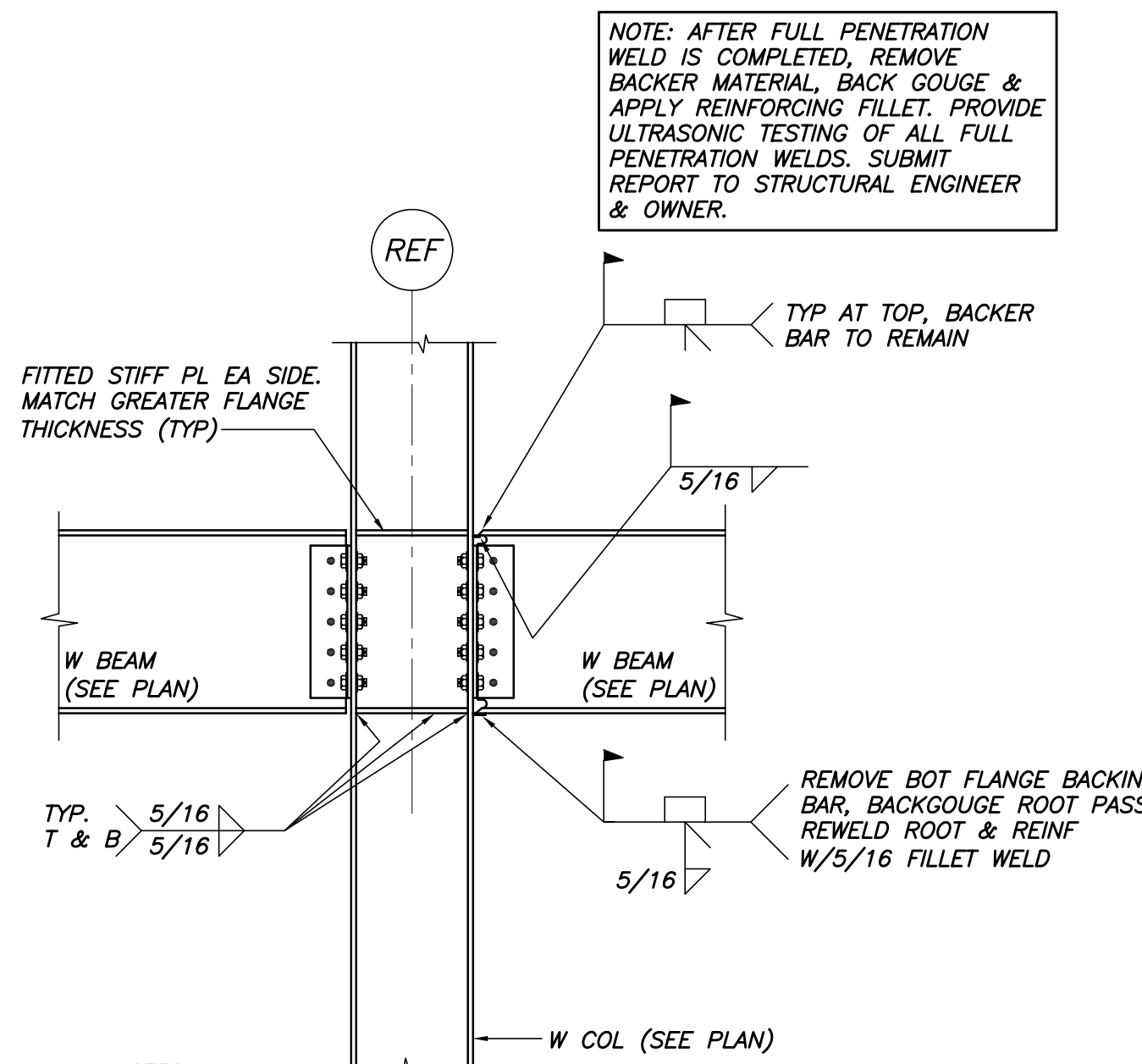
SIMPLE SHEAR CONNECTIONS NOTES:

1. SIMPLE SHEAR CONNECTIONS SHALL BE SELECTED FROM THE AISC "MANUAL OF STEEL CONSTRUCTION - ALLOWABLE STRESS DESIGN, NINTH EDITION" USING THE ABOVE REFERENCED REACTIONS AND CRITERIA. REACTIONS INDICATED ARE UNFACTORED. MORE BOLTS THAN REFERENCED IN THE "MINIMUM" SECTIONS ABOVE MAY BE REQUIRED FOR LOAD REQUIREMENTS.
2. CONNECTIONS ARE SUBJECT TO REVIEW ON THE STEEL SHOP DRAWINGS.
3. ALL BOLTS SHALL BE A325 OR A490 FOR SIMPLE SHEAR CONNECTIONS, MIN 3/4". MINIMUM WELD SIZE SHALL BE 5/16". MINIMUM MATERIAL SIZE FOR PLATES OR ANGLES SHALL BE 3/8".
4. ONE SIDED CONNECTIONS INCLUDE SINGLE PLATES AND SINGLE ANGLE CONNECTIONS.
5. TWO SIDED CONNECTIONS INCLUDE DOUBLE ANGLE AND END PLATE CONNECTIONS.



PLAN OF TYP OPENING IN COMPOSITE FLOOR DECK
N.T.S.

OVERHANG	POUR STOP GAGE
<3"	14 GA
3"-6"	12 GA
7"-9"	10 GA
>9"	SEE SECTIONS & DETAILS



NOTES:

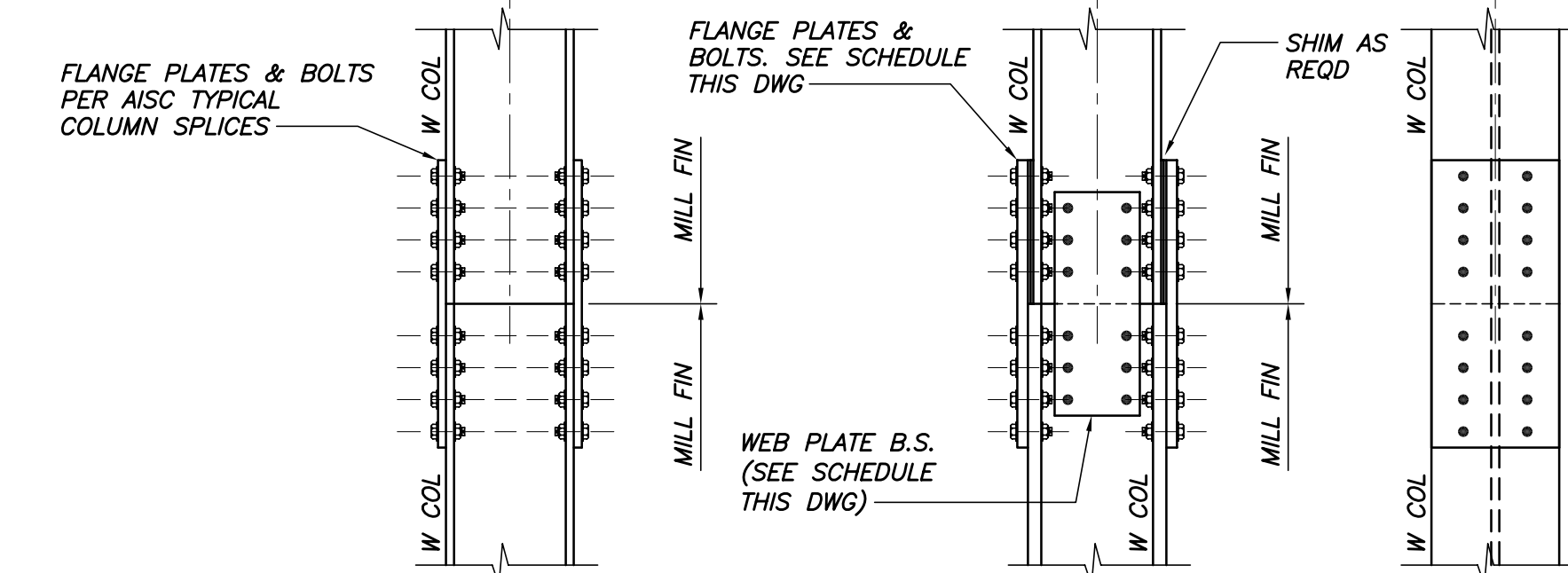
1. ULTRASONIC TESTING OF ALL WELDS IS REQUIRED. SUBMIT REPORT TO STRUCTURAL ENGINEER AND OWNER.
2. WELD METAL TO HAVE A MIN CHARTY V-NOTCH VALUE OF 20 ft/lbs AT 0° F.
3. ALL WELDS & WELD PREPARATION SHALL BE PERFORMED IN ACCORDANCE WITH THE AISC SEISMIC PROVISIONS, 2002 EDITION, (ANSI/AISC 341-02).

TYP MOMENT CONN DETAIL U.N.O.
N.T.S.

COL SPLICE DETAILS AT BRACED FRAMES/ TREE COLS/MOMENT FRAMES					
UPPER COLUMN SIZE	FLANGE PLATE THICKNESS	No. 1" A490N FLANGE BOLTS (EA FLANGE, EA COL)	WEB PLATE WIDTH	WEB PLATE THICKNESS (BOTH SIDES)	No. 3/4" A490N WEB BOLTS (EA COL)
W10x33	3/4"	6	6"	3/8"	4
W10x54	1"	10	6"	1/2"	4
W10x77	1 1/4"	14	6"	3/4"	6
W12x40	3/4"	6	8"	3/8"	4
W12x45	1"	8	8"	3/8"	6
W12x58	1"	10	8"	3/8"	6
W12x65	1"	10	8"	1/2"	6
W12x72	1"	12	8"	1/2"	6
W12x79	1"	14	8"	1/2"	8
W12x87	1 1/4"	14	8"	1/2"	8
W12x106	1 1/2"	18	8"	3/4"	10
W12x120	1 1/2"	20	8"	3/4"	10
W12x136	1 3/4"	22	8"	3/4"	12
W12x170	2"	28	8"	1"	14
W14x48	1"	8	8"	3/8"	6
W14x74	1 1/4"	12	8"	1/2"	8
W14x90	1"	16	8"	1/2"	8
W14x120	1 1/4"	18	8"	3/4"	10
W14x132	1 1/2"	22	8"	3/4"	10
W14x176	1 3/4"	28	8"	1"	14

NOTES:

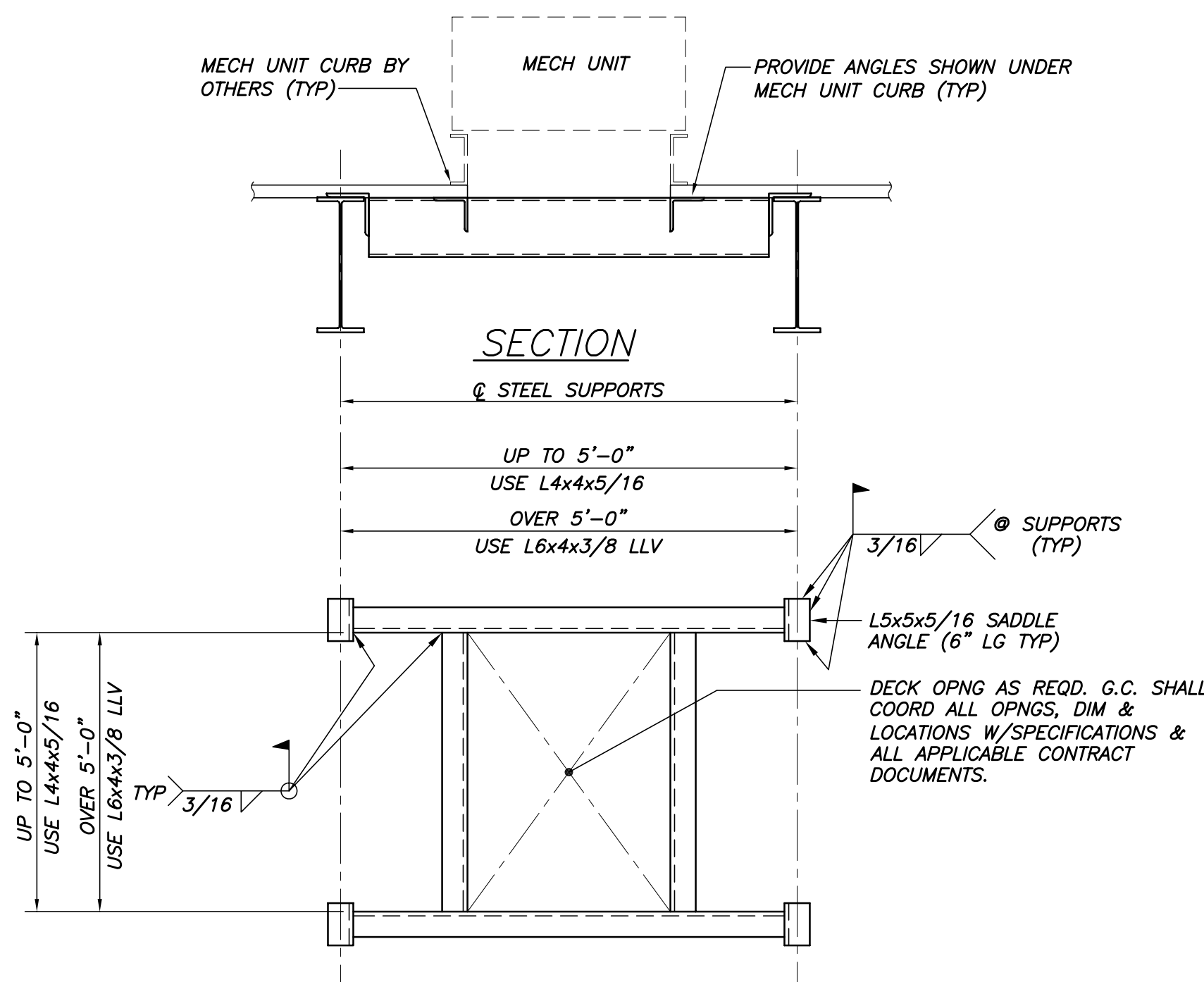
1. SPLICE PLATE MATERIAL SHALL BE A36 (36ksi)
2. FLANGE PLATE WIDTH SHALL MATCH COL FLANGE WIDTH. WEB PLATE WIDTH SHALL BE AS INDICATED.
3. PROVIDE STEEL SHIMS AS REQD FOR UPPER & LOWER COL ALIGNMENT.
4. AT NON-BRACED FRAMES, UTILIZE STANDARD AISC BOLTED COLUMN SPLICES.



TYP SPLICE

SPLICE DETAIL AT BRACED FRAMES/TREE COLS/MOMENT FRAMES

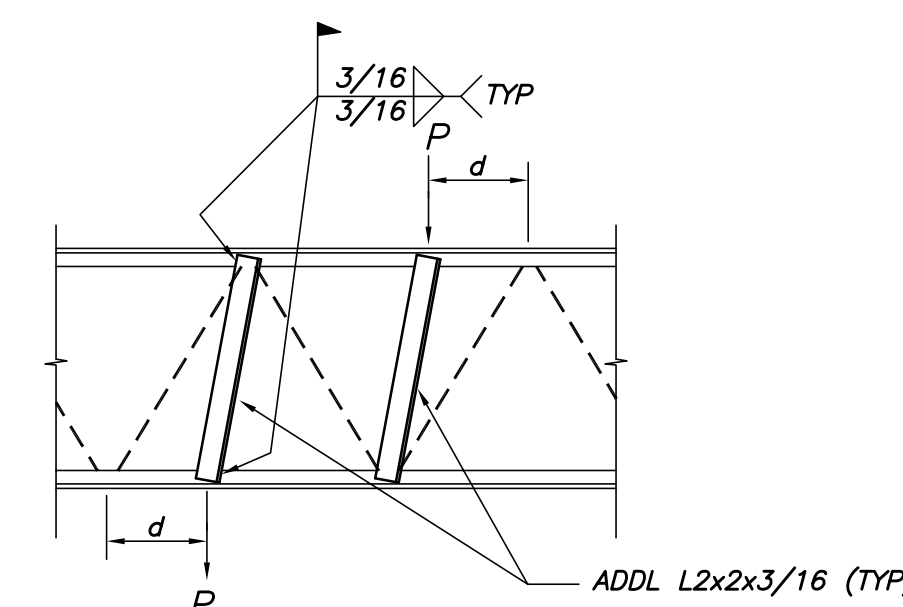
TYP COL SPLICE DETAILS
N.T.S.



PLAN OF TYP OPENING IN ROOF DECK/MECH UNIT (U.N.O.)
N.T.S.

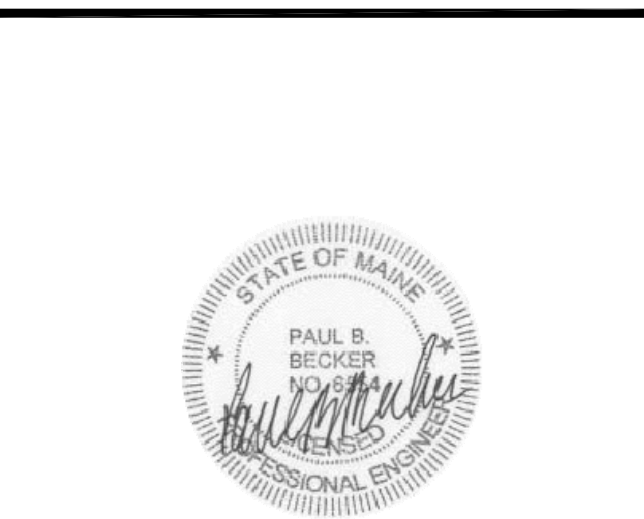
NOTES:

1. DETAIL TYPICAL AT ROOF DRAINS, EXHAUST FANS AND OTHER MECH AND HVAC EQUIP IF OPENING IS LARGER THAN 12" OR CUTS MORE THAN (1) DECK RIB. FOR OPENINGS LESS THAN 12" REINF OPNG W/16GA MIN PL MIN PL LENGTH SHALL BE "D"+4". EXTEND AS REQD FOR 2" MIN BRG ON DECK RIB.
2. PROVIDE CONT FULL DEPTH BLOCKING AT MECH UNIT CURB.



TYP JOIST REINF DETAIL
N.T.S.

1. FOR CONCENTRATED LOADS LOCATED A DISTANCE "d", 4" OR MORE FROM PANEL POINT, PROVIDE ADDITIONAL WEB MEMBERS AS SHOWN.
2. P = 300# MAX LOAD.



Mark	Date	Description
-	07.30.07	100% SUPERSTRUCTURE SET
-	07.23.07	REVIEW SET
-	06.11.07	ISSUED FOR P2/P3/P4 STEEL DETAILING
-	03.16.07	100% DESIGN DEVELOPMENT