

**GRADE BEAM SCHEDULE (LAP LENGTH)**

MARK	SIZE	TOP BARS (LAP LENGTH)	BOT BARS (LAP LENGTH)	STIRRUPS/VERT BARS	HORIZ SIDE BARS (E.F.) (LAP LENGTH)	REMARKS
GB-1	1'-4"	4'-0" 4#7 (62")	4'-0" 4#7 (72")	#4@8" O.C.	4#4 (24")	7/8" = 5'-4" BTWN COLS; 2#5 ADDL TOP
GB-2	2'-0"	5'-4" 5#9 (80")	5'-0" 5#9 (93")	#4@8" O.C.	6#4 (24")	PC PANEL SUPPORT AT BACK OF RETAIL
GB-3	1'-4"	4'-0" 4#5 (28")	4#5 (33")	#4@8" O.C.	4#4 (24")	-
GB-4	10'	4'-0" 3#5 (28")	3#5 (33")	#4@8" O.C.	4#4 (24")	SEE 5/S2.2
GB-5	2'-0"	4'-0" 5#9 (80")	5#9 (93")	#4@12" O.C.	4#4 (24")	7/8" = 5'-4" BELOW CMU & PRECAST WALL; 2#5 ADDL TOP
GB-6	1'-4"	4'-0" 4#7 (62")	4#7 (72")	#4@8" O.C.	4#4 (24")	-
GB-7	1'-8"	4'-0" 3#7 (62")	3#7 (72")	#4@8" O.C.	4#4 (24")	7/8" = 5'-4" BTWN COLS; 2#5 ADDL TOP
GB-8	1'-8"	4'-0" 3#5 (28")	3#7 (72")	#4@8" O.C.	4#4 (24")	7/8" = 5'-4" BTWN COLS; 2#5 ADDL TOP
GB-9	1'-4"	4'-0" 4#7 (62")	4#7 (72")	#4@8" O.C.	4#4 (24")	-
GB-10	2'-0"	4'-0" 5#9 (80")	5#9 (93")	#4@12" O.C.	4#4 (24")	-
GB-11	1'-8"	4'-0" 4#9 (80")	4#9 (93")	#4@8" O.C.	4#4 (24")	-
GB-12	1'-8"	3'-0" 4#9 (80")	4#9 (93")	#4@8" O.C.	3#4 (24")	-
GB-13	1'-6"	2'-0" 3#7 (62")	3#7 (72")	#4@8" O.C.	2#4 (24")	-
GB-14	1'-4"	2'-0" 4#5 (28")	4#5 (33")	#4@8" O.C.	2#4 (24")	-
GB-15	1'-4"	4'-0" 3#9 (80")	3#9 (93")	#4@8" O.C.	4#4 (24")	SLOPE TOP FOR STRUCT SLAB SUPPORT. PROVIDE GRADE BEAM TO SLAB DOWELS. SEE SECT 5/S2.5 FOR ADDL INFO

**PILE SUPPORT STRIP FOOTING SCHEDULE (LAP LENGTH)**

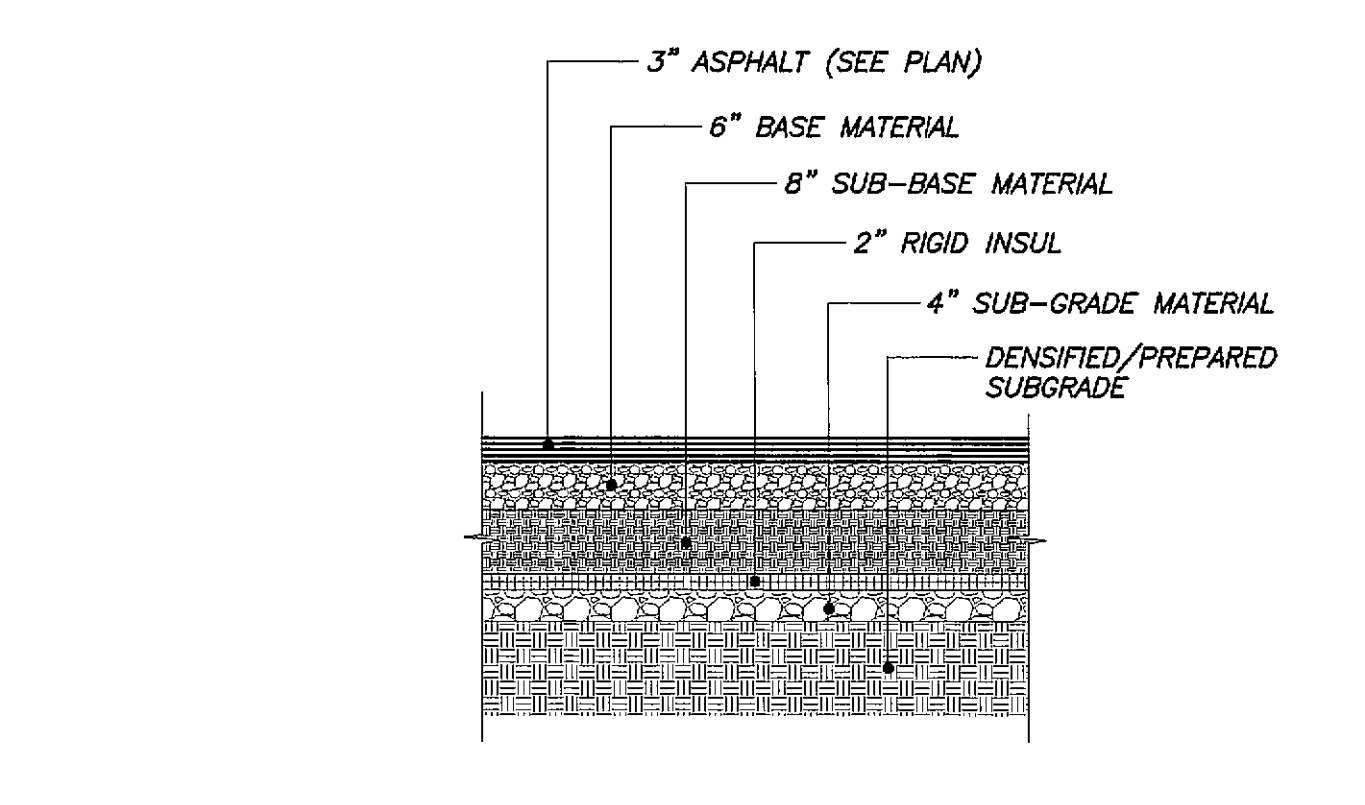
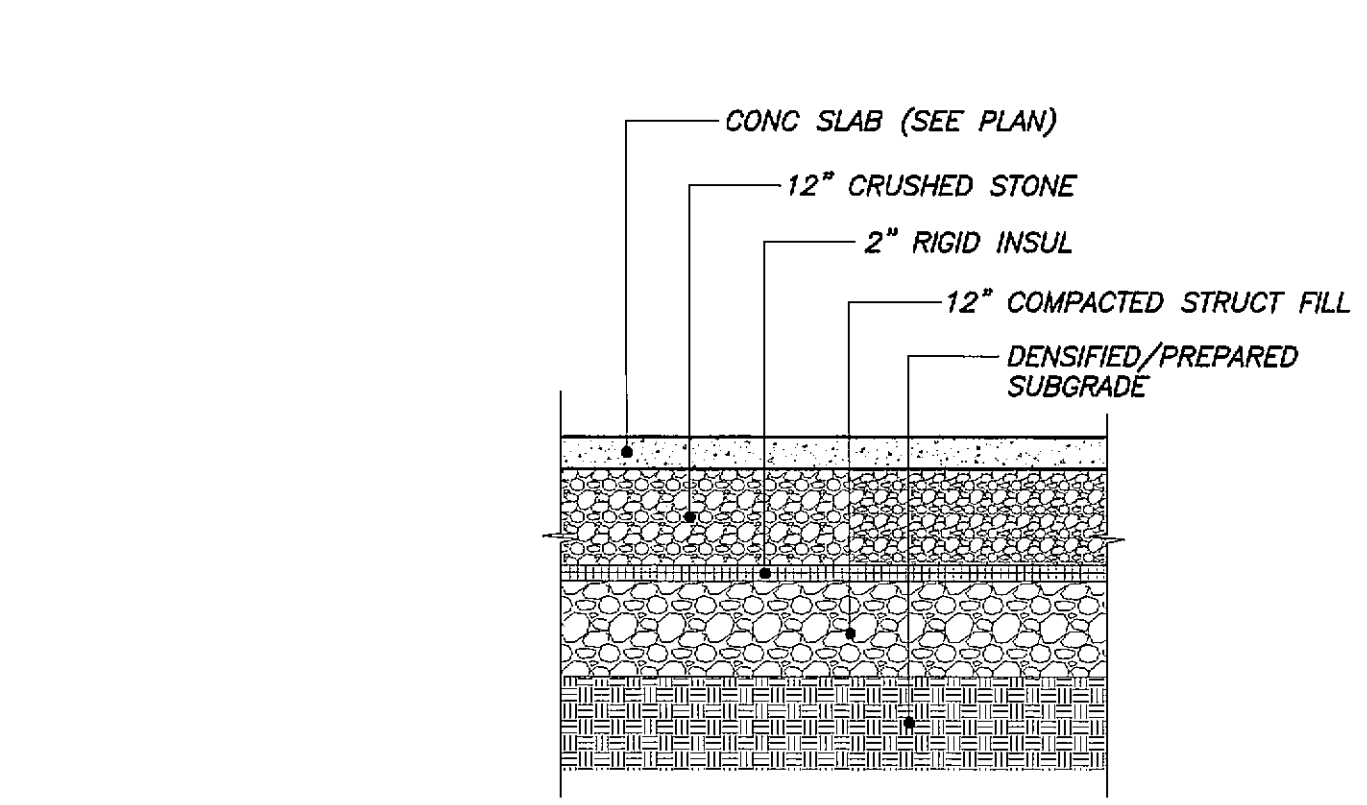
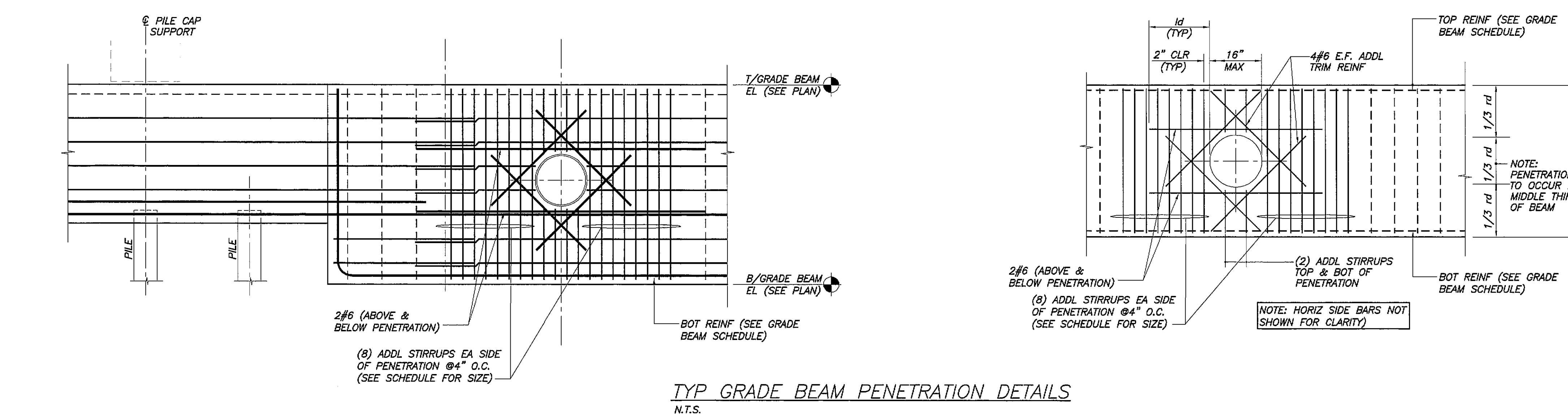
MARK	SIZE	TOP BARS	BOT BARS	STIRRUPS/VERT BARS	HORIZ SIDE BARS (E.F.)	REMARKS
SF1	9'-11"	4'-6" 17#10 (91")	17#10 (72")	#6@24" (6 VERT LEGS)	4#5 (36")	-
SF2	7'-7"	4'-0" 16#10 (91")	16#10 (72")	#6, 4#18", BAL@22" (6 VERT LEGS)	3#5 (36")	-
SF3	8'-11"	4'-0" 16#10 (91")	16#10 (72")	#6, 4#18", BAL@18" (6 VERT LEGS)	4#5 (36")	-
SF4	7'-7"	4'-0" 9#10 (91")	9#10 (72")	#6@24" (6 VERT LEGS)	3#5 (36")	-

NOTES:  
1. ADDITIONAL REINFORCEMENT REQUIRED DIRECTLY OVER PILE GROUP. SEE SECTIONS FOR ADDITIONAL INFORMATION.  
2. SPACE STIRRUPS THROUGH PILE GROUPS @18" O.C. MAX.

**PILE GROUP TRANSVERSE REINF SCHEDULE**

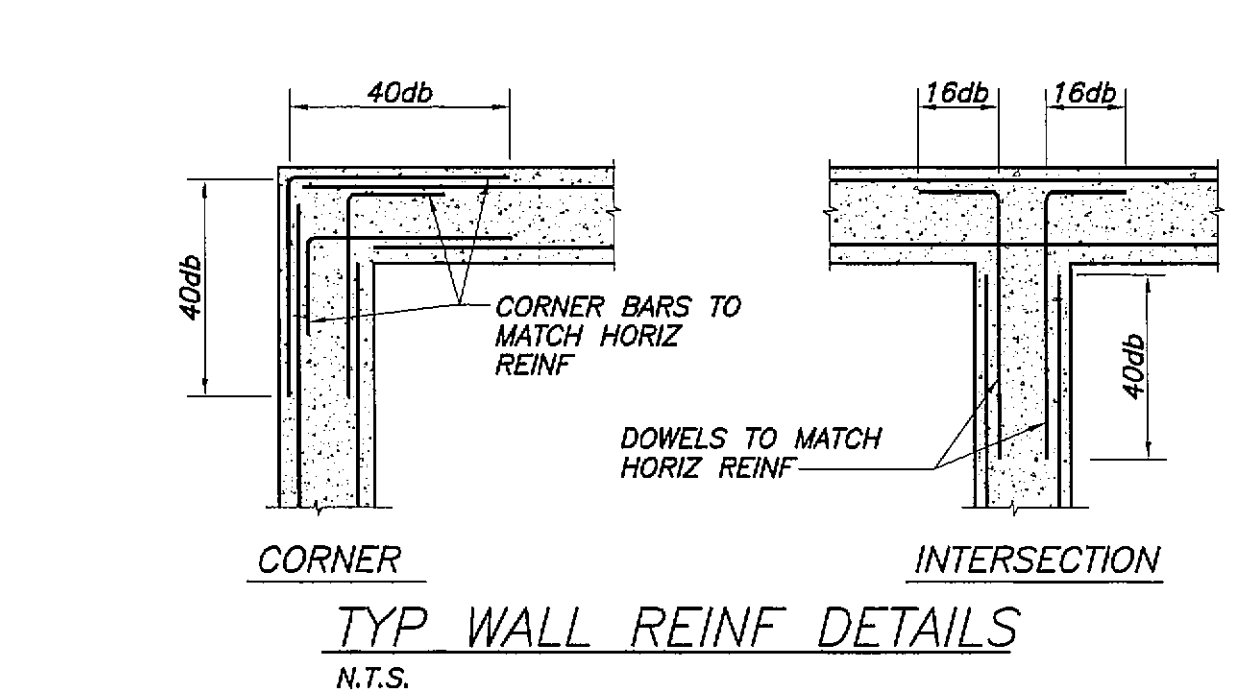
MARK	REINF W/STD HOOKS EA END	REMARKS
PG2	8#6	-
PG3	11#8	-
PG5	15#8	-
PG9		SEE SECT S2.5 FOR ADDL REINF
PG10		SEE SECT S2.5 FOR ADDL REINF
PG11		SEE SECT S2.5 FOR ADDL REINF

NOTES:  
1. ADDITIONAL REINFORCEMENT REQUIRED DIRECTLY OVER PILE GROUP. SEE SECTIONS FOR ADDITIONAL INFORMATION.  
2. SPACE STIRRUPS THROUGH PILE GROUPS @18" O.C. MAX.



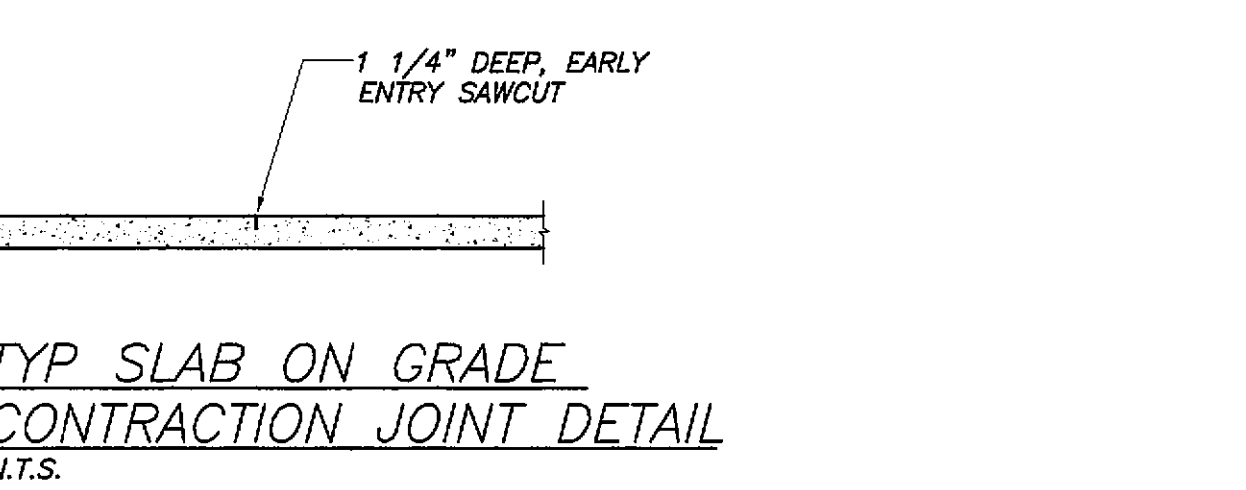
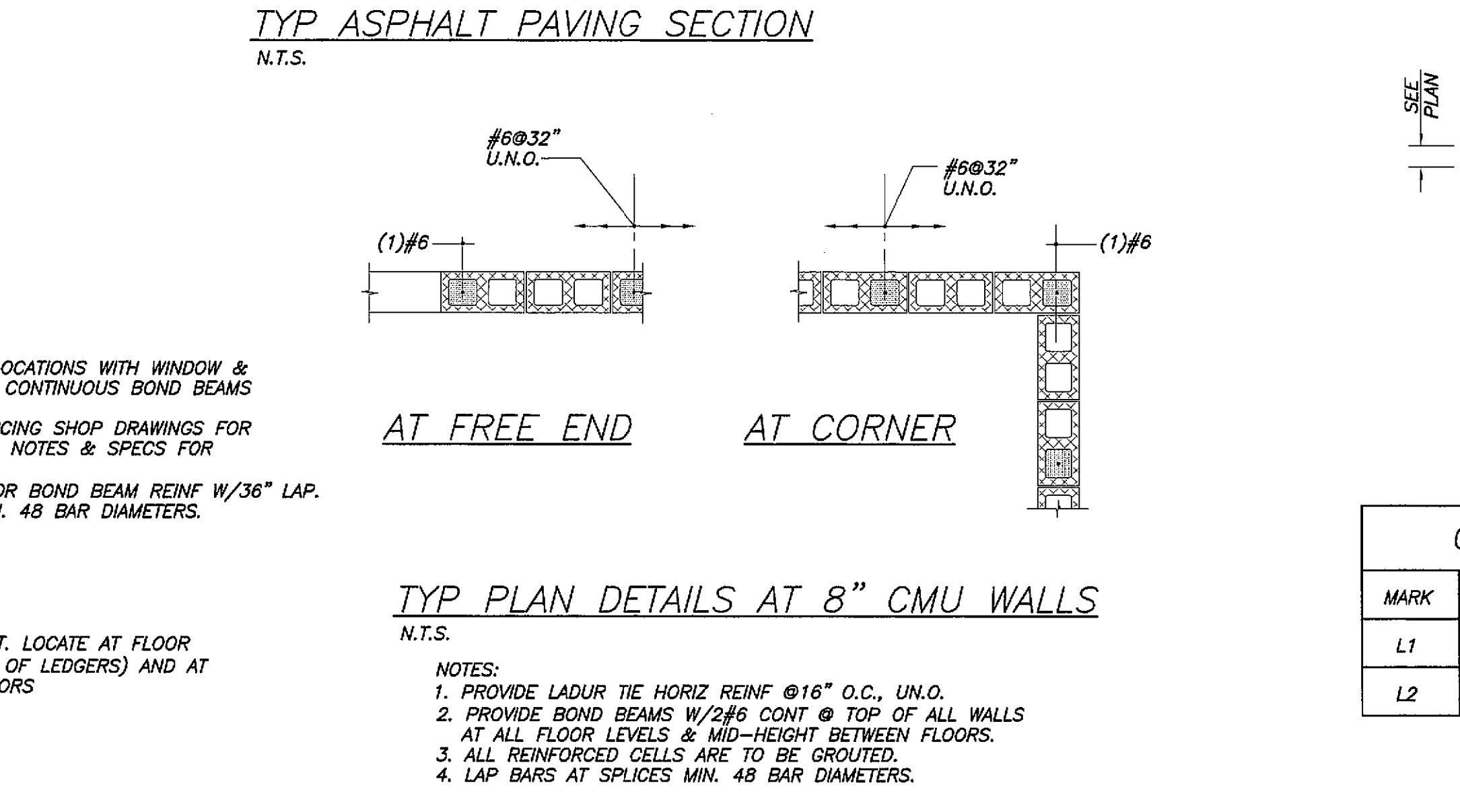
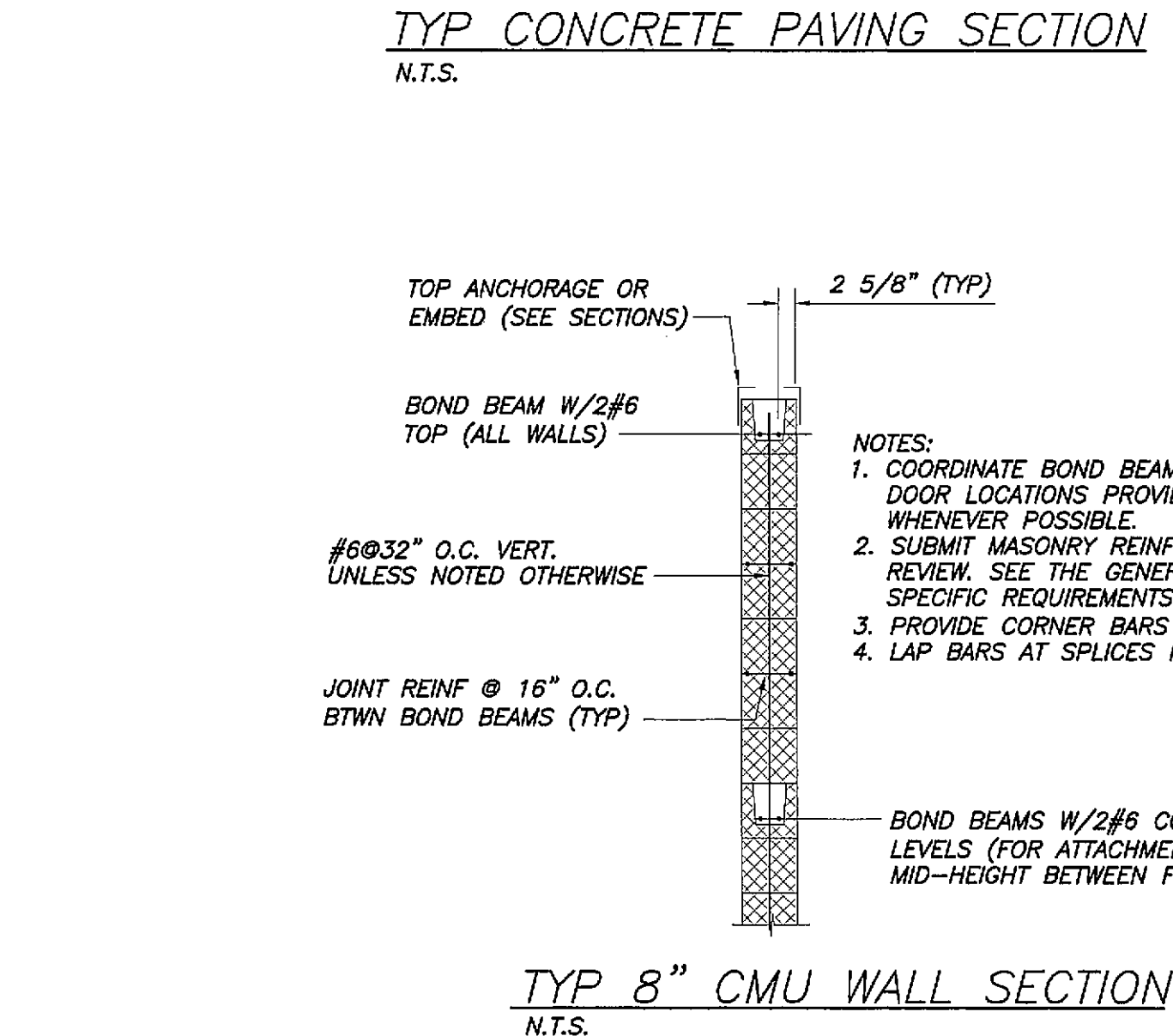
**REBAR LAP SPlice TABLE U.N.O.**

BAR SIZE	LAP LENGTH
#3	30"
#4	36"
#5	48"
#6	56"
#7	81"
#8	93"
#9	105"
#10	118"



NOTES:  
1. REFERENCE GEOTECHNICAL REPORT FOR THICKNESS, GRADING AND SPECIFICATIONS ON ALL SUB-GRADE MATERIALS.  
2. SECTION APPLIES TO AREAS WITHIN BUILDING FOOTPRINT.  
REFERENCE SITE DWGS FOR AREAS OUTSIDE OF BUILDING FOOTPRINT.

NOTES:  
1. REFERENCE GEOTECHNICAL REPORT FOR THICKNESS, GRADING AND SPECIFICATIONS ON ALL SUB-GRADE MATERIALS.  
2. SECTION APPLIES TO AREAS WITHIN BUILDING FOOTPRINT.  
REFERENCE SITE DWGS FOR AREAS OUTSIDE OF BUILDING FOOTPRINT.



**CMU LINTEL SCHEDULE**

MARK	CLEAR SPAN	WIDTH	DEPTH	REINF
L1	< 6'-0"	8"	8"	2#5 CONT
L2	6'-0" - 8'-0"	8"	16"	2#5 CONT

**ABBREVIATIONS**

A.B.	ANCHOR BOLT	K	KIPS
ACT	ACOUSTICAL CEILING TILE	L	ANGLE
A.F.F.	ABOVE FINISH FLOOR	LL	LIVE LOAD
AGG	AGGREGATE	LLH	LONG LEG HORIZ
ALT	ALTERNATE	LLV	LONG LEG VERT
APPROX	APPROXIMATE	MAX	MAXIMUM
ARCH	ARCHITECTURAL	MDO	MEDIUM DENSITY OVERLAY
BCK	BOTTOM CHORD EXTENSION	MECH	MECHANICAL
BM	BEAM	MANUF	MANUFACTURER
BD	BOARD	MIN	MINIMUM
BIT	BITUMINOUS	MISC	MISCELLANEOUS
BLDG	BUILDING	M.O.	MASONRY OPENING
B.O.	BOTTOM OF / BY OTHERS	N.I.C.	NOT IN CONTRACT
BOT	BOTTOM	N.S.	NEAR SIDE
BRDG	BRIDGING	N.T.S.	NOT TO SCALE
B.PL	BASE PLATE	O.C.	ON CENTER
BRG	BEARING	O.D.	OUTSIDE DIAMETER
B.S.	BOTH SIDES	O.F.	OUTSIDE FACE
C	CHANNEL	PAF	POWDER ACTUATED FASTENER
CEM BD	CEMENT BOARD	PLT	PLATE
C.I.P.	CAST IN PLACE	PLF	POUNDS PER LINEAR FOOT
C.J.	CONTROL/CONST. JOINT	PSF	POUNDS PER SQUARE FOOT
CL	CENTER LINE	PSI	POUNDS PER SQUARE INCH
CLR	CLEARANCE	P.T.	PRESSURE TREATED
CMU	CONCRETE MASONRY UNIT	PVC	POLYVINYL CHLORIDE
COL	COLUMN	PVMT	PAVEMENT
CONC	CONCRETE	R	RADIUS
CONT	CONTINUOUS	RD	ROOF DRAIN
DIA	DIAMETER	REINF	REINFORCEMENT
DBL	DOUBLE	REQD	REQUIRED
DL	DEAD LOAD	REQMNT	REQUIREMENTS
DET	DETAIL	R.O.	ROUGH OPENING
DWG	DRAWING	RTU	ROUGH OPENING ROOF TOP UNIT
EA	EACH	S.F.	SQUARE FOOT
E.F.	EACH FACE	SHT	SHEET
E.J.	EXPANSION JOINT	SIM	SIMILAR
EL/ELEV	ELEVATION	S.K.	SHEAR KEY
ELEC	ELECTRICAL	S.S.	STAINLESS STEEL
EMBED	EMBEDMENT	STL	STEEL
E.S.	EACH SIDE	STRUCT	STRUCTURAL
EQ	EQUAL	STIFF	STIFFENER
E.W.	EACH WAY	T&B	TOP & BOTTOM
E.W.B.	EACH WAY BOTTOM	TOP	TOP CHORD EXTENSION
EXIST	EXISTING	T.J.	TIE JOIST
EXT	EXTERIOR	T.O.	TOP OF
FD	FLOOR DRAIN	T.O.S.	TOP OF STEEL etc.
FIN. FL.	FINISH FLOOR	TYP	TYPICAL
F.F.	FINISH FLOOR / FAR FACE	U.N.O.	UNLESS NOTED OTHERWISE
F.B.O.	FURNISHED BY OTHERS	VB	VAPOR BARRIER
FB	FINISH FLOOR ELEVATION	VERT	VERTICAL
F.F.E.	FAR SIDE FINISH FLOOR ELEVATION	V.F.	VERTICAL VENT
F.S.	FAR SIDE FINISH FLOOR ELEVATION	VTR	VENT THROUGH ROOF
FTG	FOOTING	W	WITH
GA	GAUGE	W.F.	WIDE FLANGE
GAUV	GALVANIZED	W.P.F.	WORK POINT
G.C.	GENERAL CONTRACTOR	W.W.F.	WELDED WIRE FABRIC
GWB	GYPSUM WALLBOARD		
HORIZ	HORIZONTAL		
HVAC	HEATING VENTILATION & COOLING		
HSS	HOLLOW STRUCTURAL SHAPE		
I.D.	INSIDE DIAMETER		
I.F.	INSIDE FACE		
I.J.	ISOLATION JOINT		
INSUL	INSULATION		

100% FOUNDATION SET

TYP CONCRETE SECTIONS & DETAILS

PA / PE: EAR  
Drawn By: APP

Drawing Number

S2.1