

**BECKER**  
structural engineers, inc.

75 York Street  
Portland, ME 04101-4701  
info@beckerstructural.com

Tel: 207-879-1838  
Fax: 207-879-1822  
www.beckerstructural.com

Project Title  
**84 MARGINAL WAY**  
Portland, Maine

HA Project No. 06196  
Key Plan



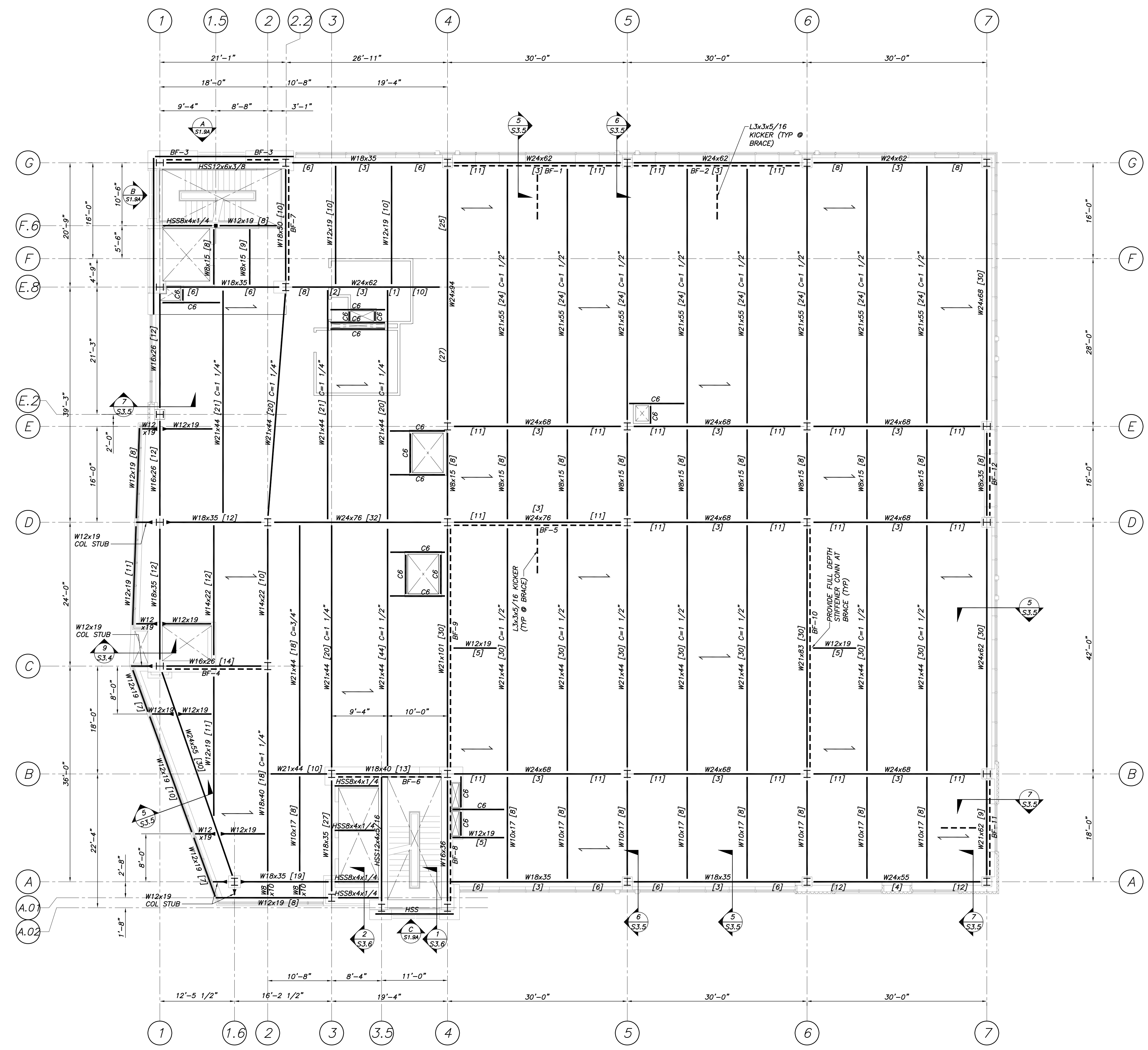
| Mark | Date     | Description                         |
|------|----------|-------------------------------------|
| -    | 07.30.07 | 100% SUPERSTRUCTURE SET             |
| -    | 07.23.07 | REVIEW SET                          |
| -    | 06.11.07 | ISSUED FOR P2/P3/P4 STEEL DETAILING |
| -    | 03.16.07 | 100% DESIGN DEVELOPMENT             |

Drawing Status  
**100% SUPERSTRUCTURE SET**

Drawing Title  
**LEVEL 6 THRU 10 FRAMING PLANS**

PA / PE: EAR Drawn By: CHF  
Drawing Number

**S1.9**



**LEVEL 6-10 FRAMING PLANS (LEVEL 6 SHOWN)**  
1/8"=1'-0"

- NOTES:**
- INDICATES DIRECTION OF 6 1/2" NORMAL WEIGHT CONCRETE SLAB ON 3x1 20GA GALVANIZED METAL DECK (3 1/2" CONCRETE FILL OVER 3" DECK, 3 SPAN MIN), U.N.O. PROVIDE 6x6-W2.1xw2.1 W.W.F. TOP OF SLAB EL (SEE BOX) @ H.P. CONC THICKNESS IS MINIMUM. PROVIDE SUFFICIENT CONC TO ACCOUNT FOR STRUCTURE DEFLECTION. SEE SPECS.
  - TOP OF STEEL EL (SEE BOX).
  - [X], ETC INDICATES 3/4"x5 1/2" LG HEADED SHEAR STUDS SPACED UNIFORMLY ALONG BEAM OR BTWN CONCENTRATED LOADS (U.N.O.).
  - INDICATES BRACING. SEE BRACING ELEVATIONS DWG S1.12 & S1.13.
  - INDICATES MOMENT CONNECTION. SEE DETAILS.
  - REINFORCE CONC SLABS AROUND ALL FLOOR PENETRATIONS PER TYPICAL DETAILS DWG S3.1, U.N.O. COORD ALL OPENING SIZES & LOCATIONS W/ARCH & OTHER DISCIPLINES DWGS.
  - UNLESS NOTED OTHERWISE, BEAMS TO BE PLACED AT EQUAL SPACES BETWEEN COL LINES.
  - FOR COMPOSITE BEAM END REACTIONS, SEE SIMPLE SHEAR BEAM CONNECTION SCHEDULE, DWG S3.1.
  - FOR COLUMN SIZES, SEE COLUMN SCHEDULE, DWG S1.14.
  - CB INDICATES CB&B.2 FRAMING AT FLOOR PENETRATIONS.

**NOTE:**  
SEE PARY PLANS, DWG S1.9A, FOR ADDL FRAMING AT FLOOR PENETRATIONS AT LEVELS 7 THRU 10.

**LEVEL 6:** TOP OF SLAB EL 164'-0"  
TOP OF STEEL EL 163'-5 1/2" U.N.O.  
**LEVEL 7:** TOP OF SLAB EL 178'-0"  
TOP OF STEEL EL 177'-5 1/2" U.N.O.  
**LEVEL 8:** TOP OF SLAB EL 192'-0"  
TOP OF STEEL EL 191'-5 1/2" U.N.O.  
**LEVEL 9:** TOP OF SLAB EL 206'-0"  
TOP OF STEEL EL 205'-5 1/2" U.N.O.  
**LEVEL 10:** TOP OF SLAB EL 220'-0"  
TOP OF STEEL EL 219'-5 1/2" U.N.O.