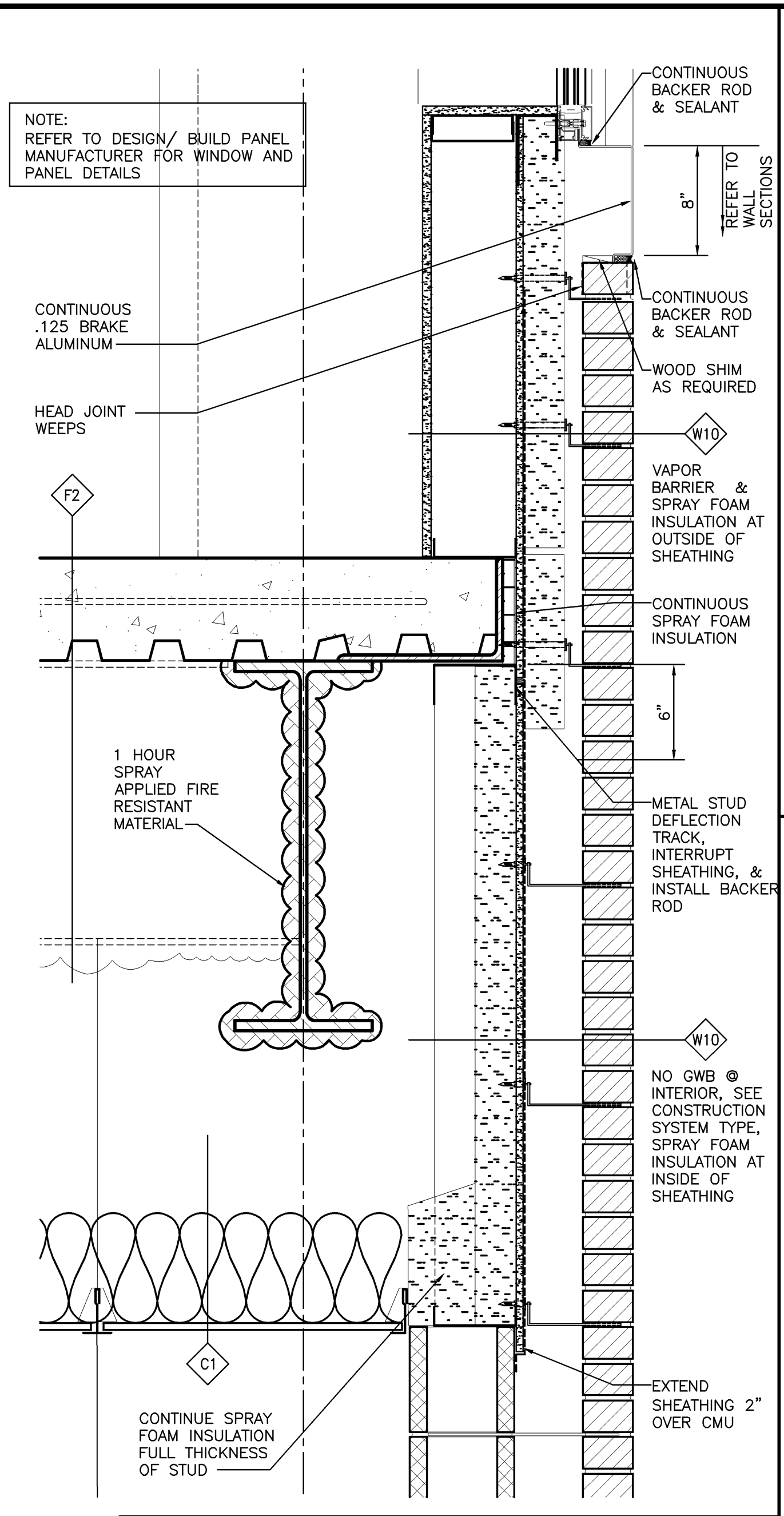
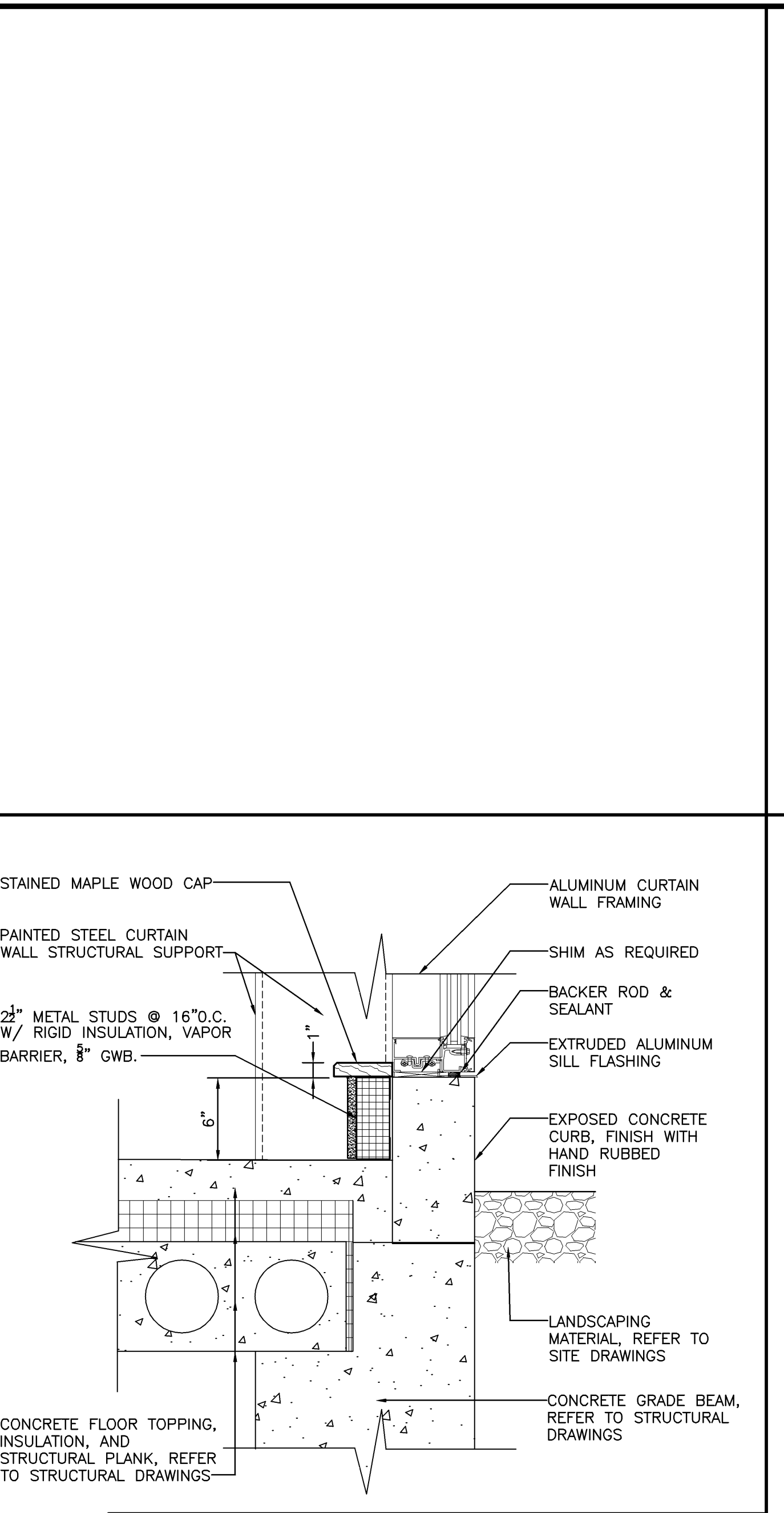


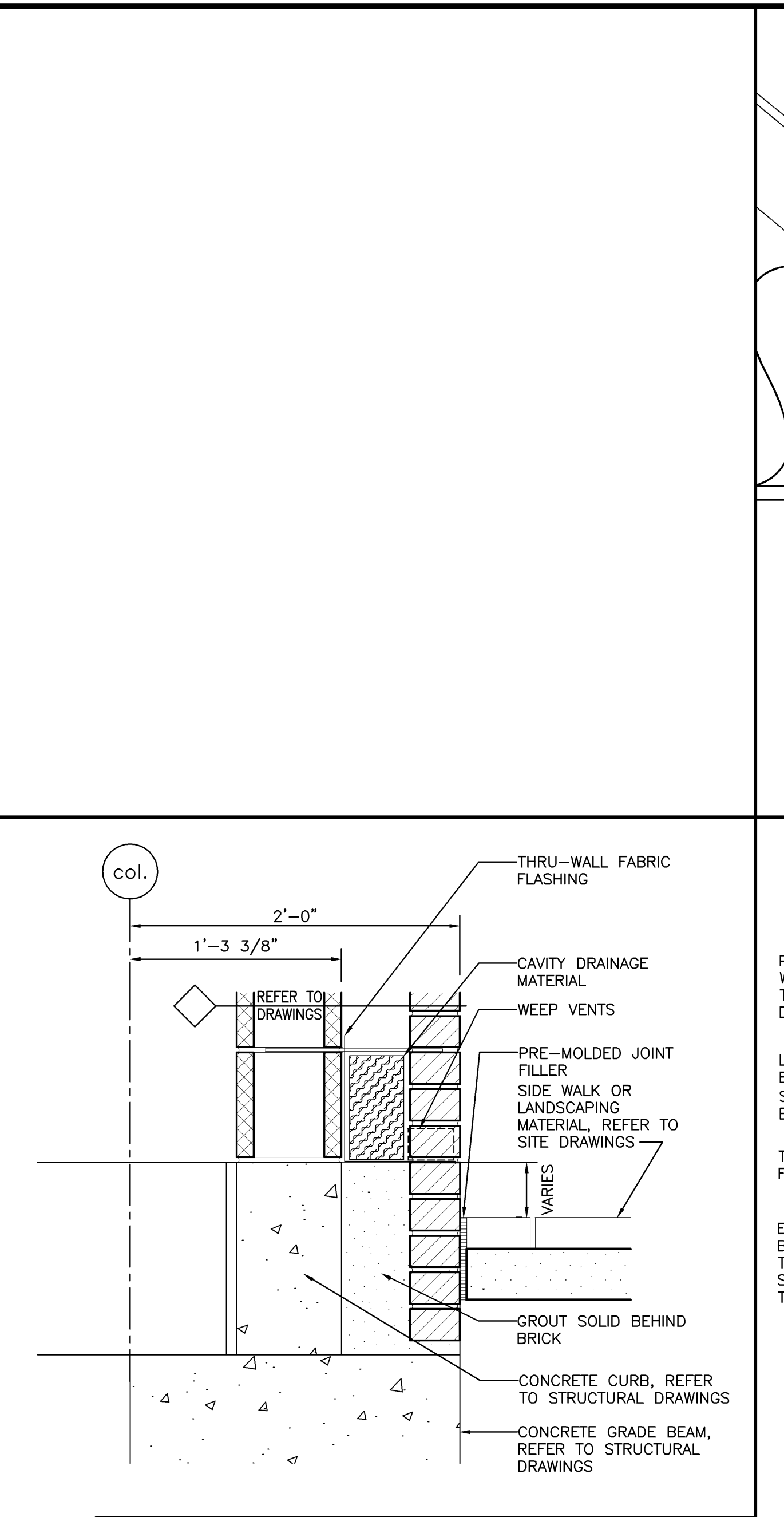
**DETAIL**  
1 1/2" = 1'-0"  
0 4" 8" 1"  
REF: A30.1 **C5**



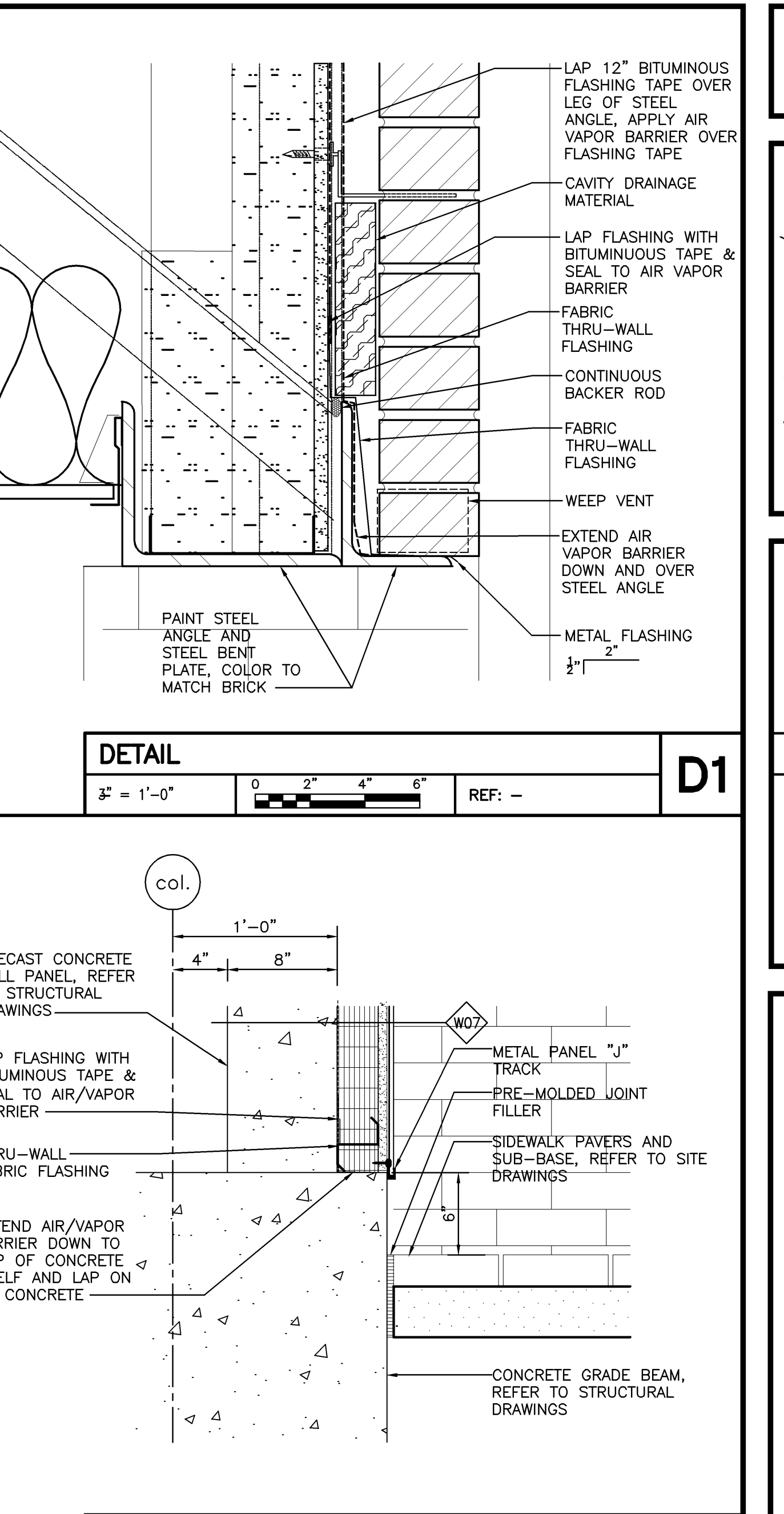
**DETAIL**  
1 1/2" = 1'-0"  
0 4" 8" 1"  
REF: A30.1 **C4**



**DETAIL**  
1 1/2" = 1'-0"  
0 4" 8" 1"  
REF: NA **C3**



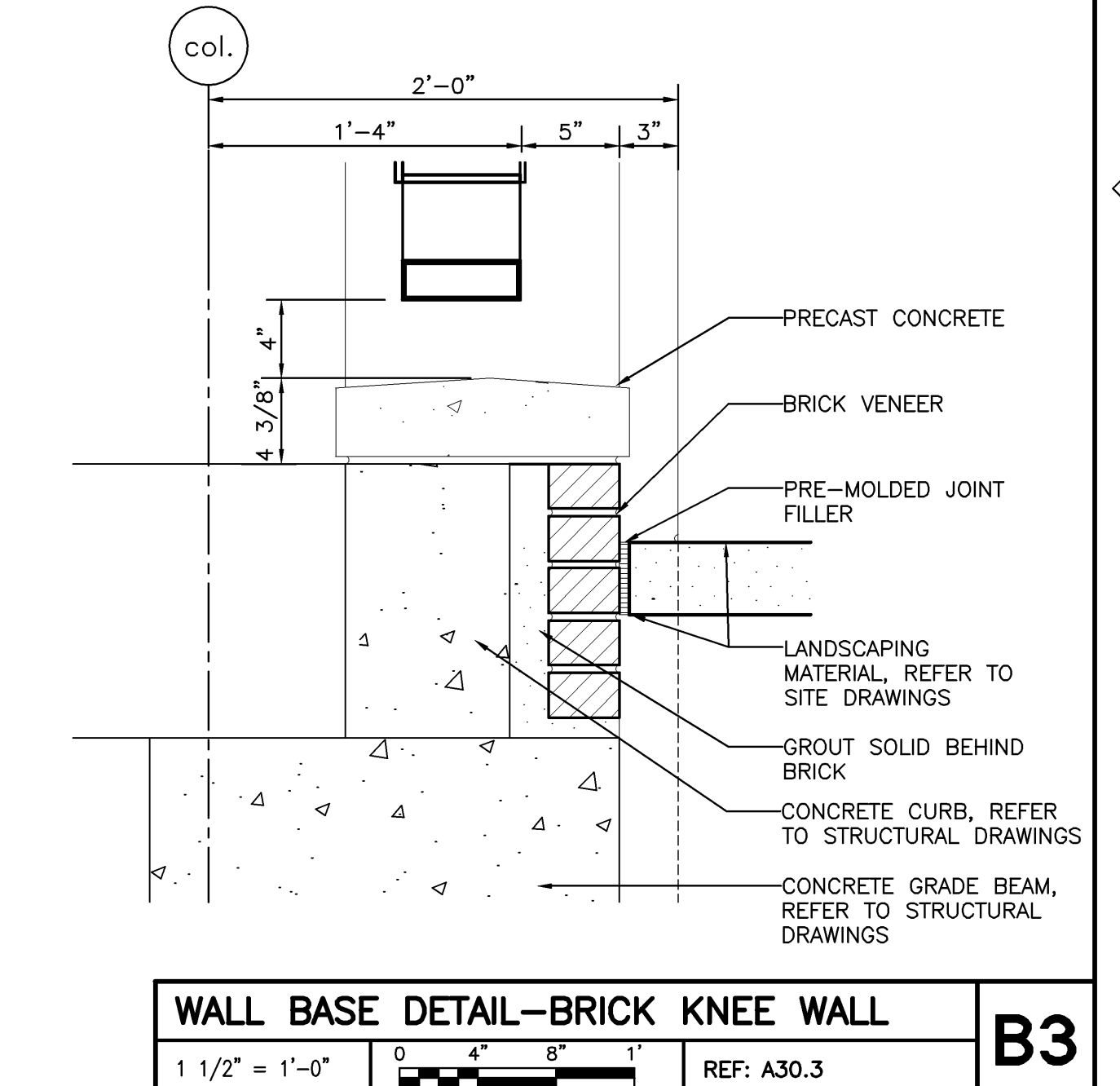
**WALL BASE DETAIL - BRICK VENEER/CMU**  
1 1/2" = 1'-0"  
0 4" 8" 1"  
REF: A30.1, A30.3, A30.4 **C2**



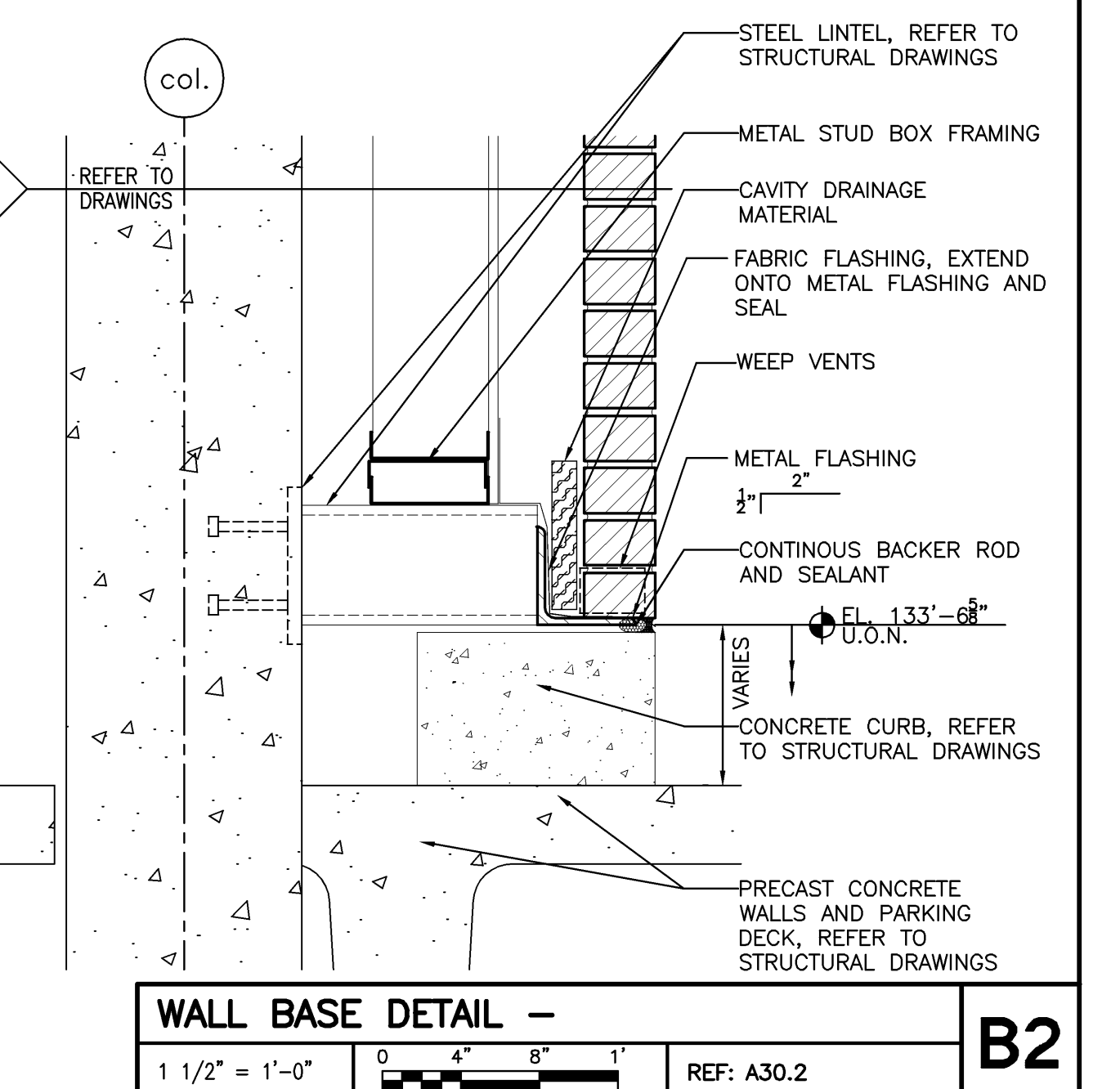
**WALL BASE DETAIL - METAL WALL PANEL**  
1 1/2" = 1'-0"  
0 4" 8" 1"  
REF: A30.3 **C1**



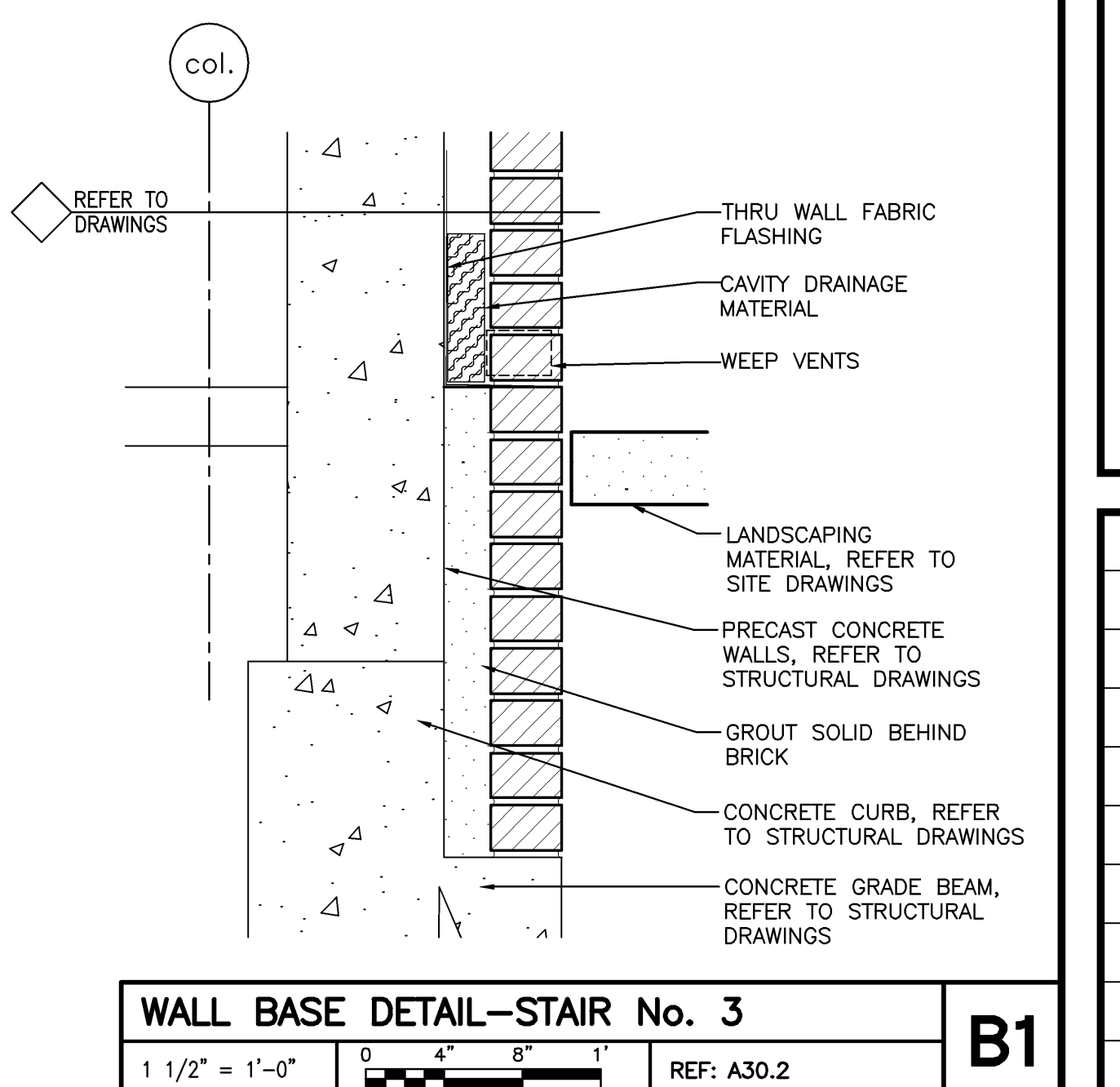
**WALL BASE DETAIL - CONCRETE CURB**  
1 1/2" = 1'-0"  
0 4" 8" 1"  
REF: A10.1 **B4**



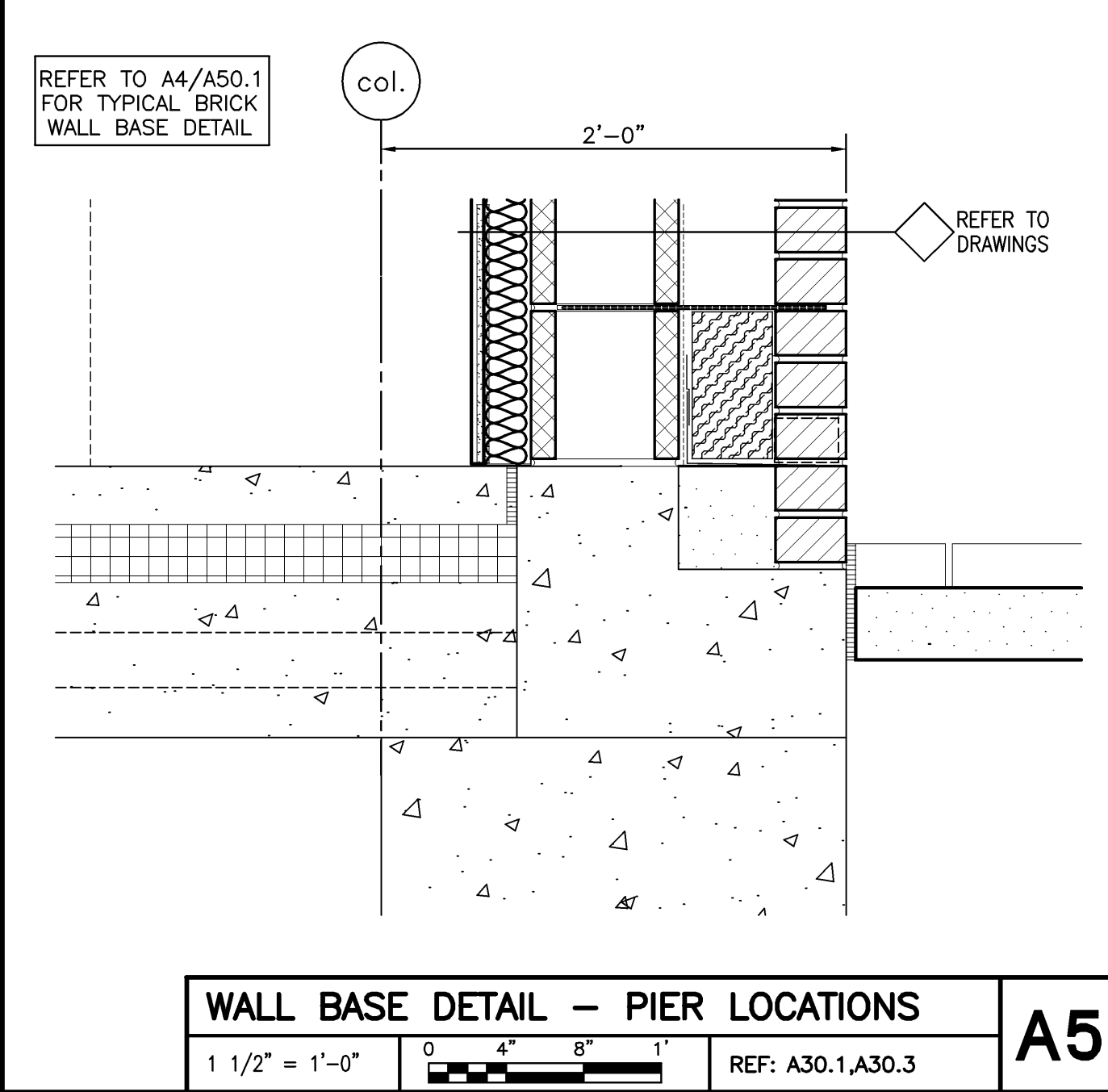
**WALL BASE DETAIL - BRICK KNEE WALL**  
1 1/2" = 1'-0"  
0 4" 8" 1"  
REF: A30.3 **B3**



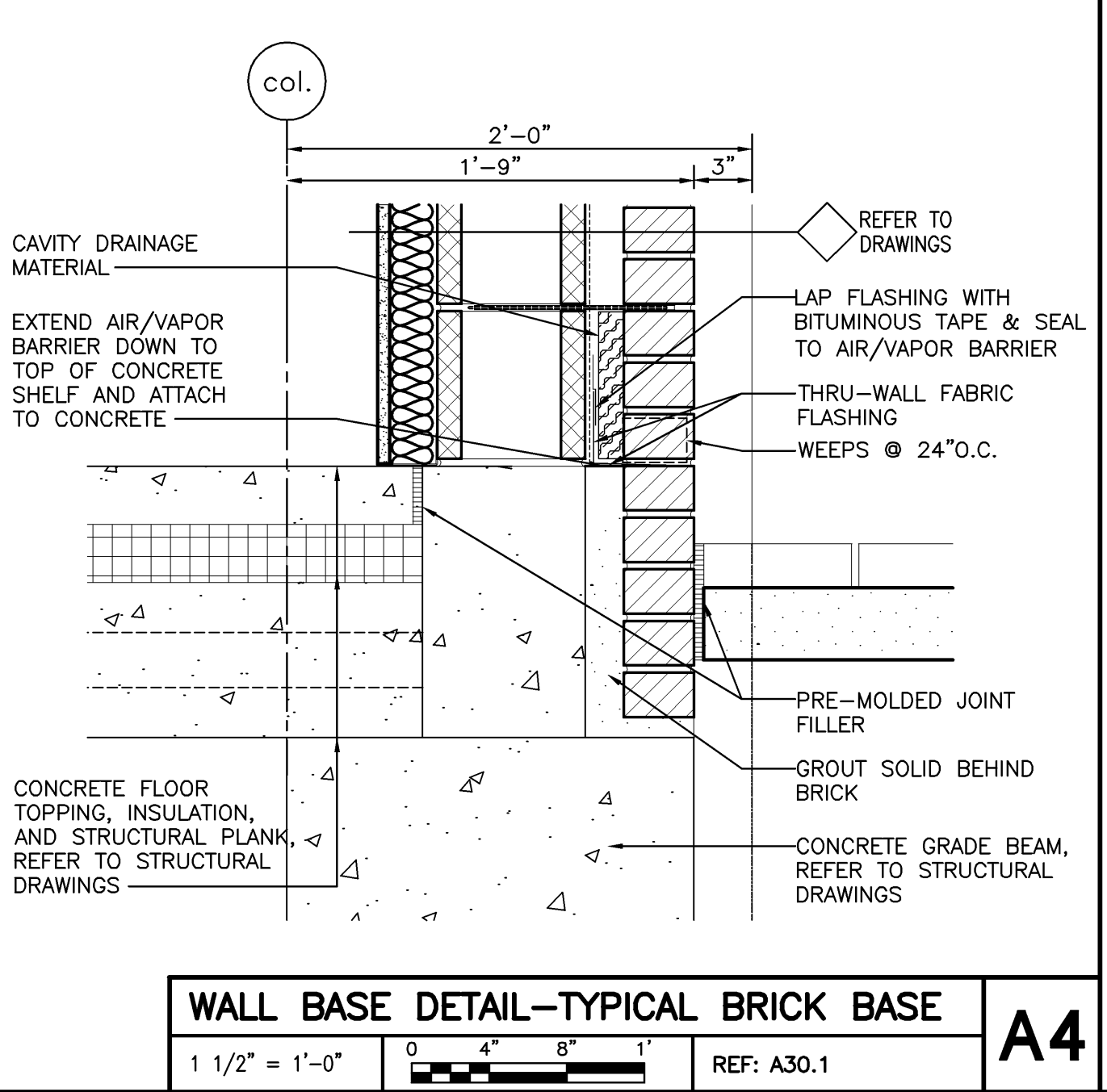
**WALL BASE DETAIL -**  
1 1/2" = 1'-0"  
0 4" 8" 1"  
REF: A30.2 **B2**



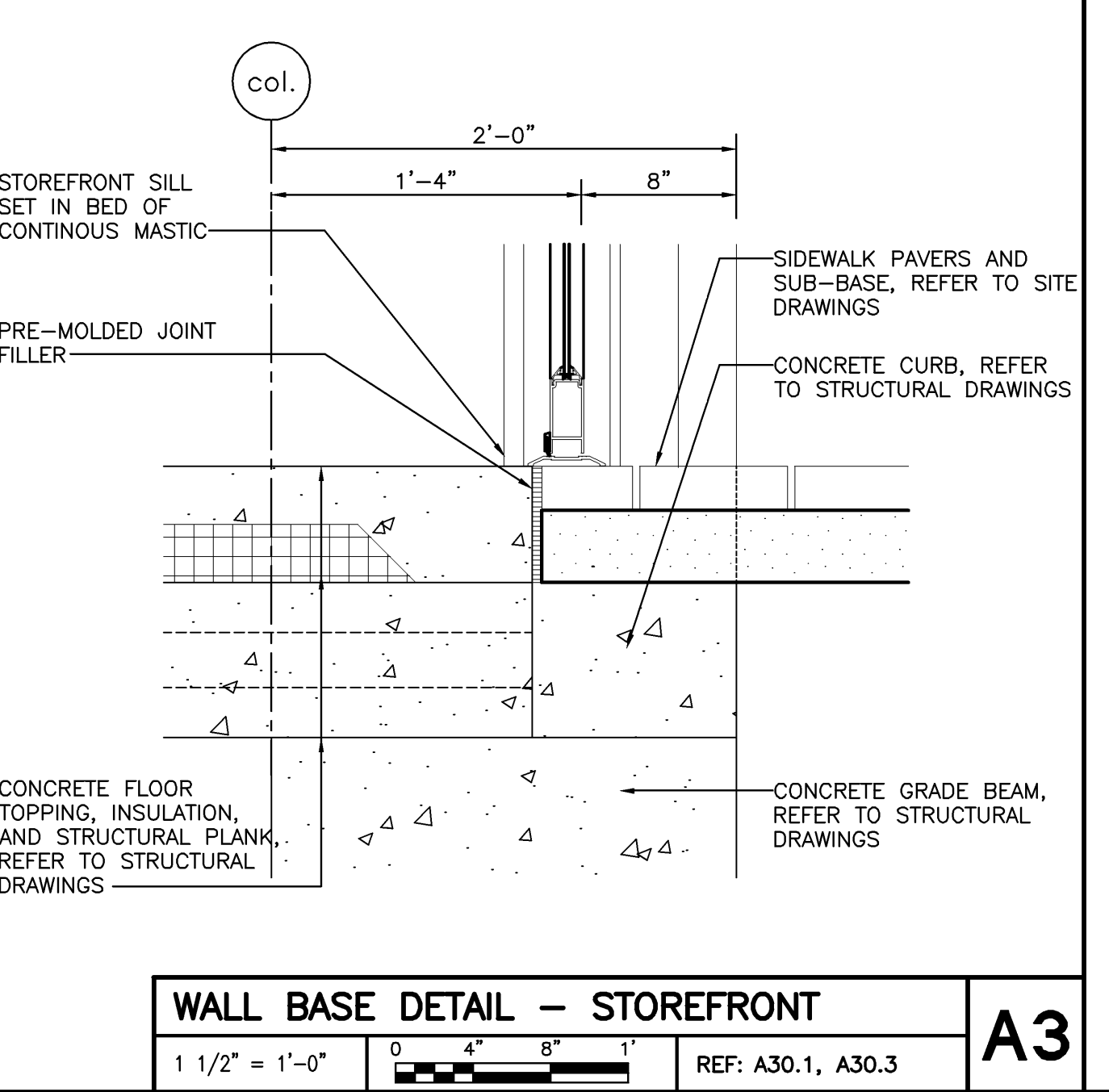
**WALL BASE DETAIL - STAIR No. 3**  
1 1/2" = 1'-0"  
0 4" 8" 1"  
REF: A30.2 **B1**



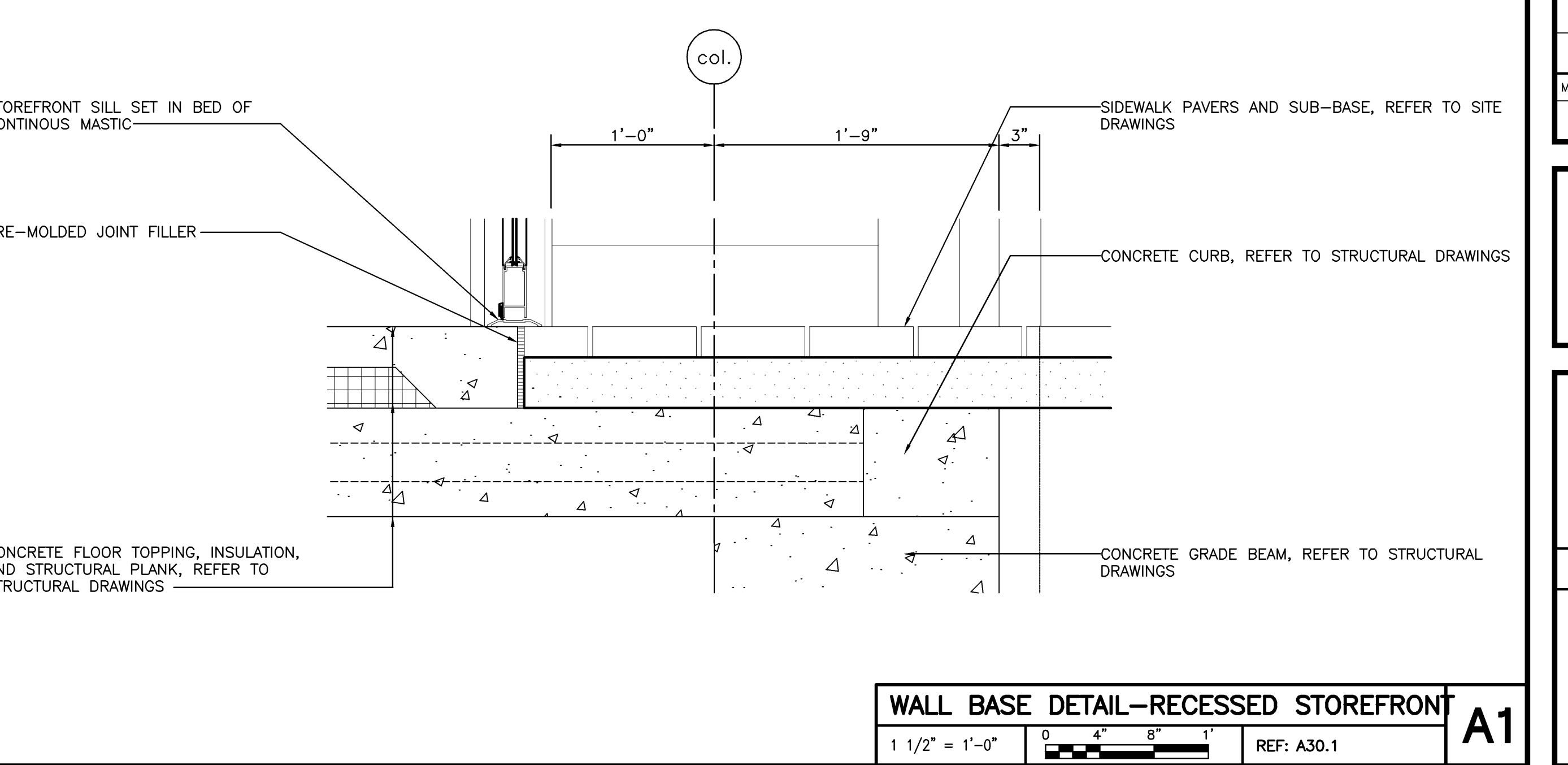
**WALL BASE DETAIL - PIER LOCATIONS**  
1 1/2" = 1'-0"  
0 4" 8" 1"  
REF: A30.1, A30.3 **A5**



**WALL BASE DETAIL - TYPICAL BRICK BASE**  
1 1/2" = 1'-0"  
0 4" 8" 1"  
REF: A30.1 **A4**



**WALL BASE DETAIL - STOREFRONT**  
1 1/2" = 1'-0"  
0 4" 8" 1"  
REF: A30.1, A30.3 **A3**



**WALL BASE DETAIL - RECESSED STOREFRONT**  
1 1/2" = 1'-0"  
0 4" 8" 1"  
REF: A30.1 **A1**

**pizzagalli**  
construction company

Architects + Engineers  
**HARRIMAN ASSOCIATES**

One Auburn Business Park  
Auburn, Maine 04210  
207.784.8100 fax  
207.783.3017 fax

66 Pearl St., Suite 301  
Portland, Maine 04101  
207.775.0093 fax  
207.775.0460 fax  
www.harriman.com  
© 2006

LICENSED ARCHITECT  
JUDY JOHNSON  
No. 2004  
STATE OF MAINE

Project Title  
**84 MARGINAL WAY**  
Portland, Maine

HA Project No. **06196**

Key Plan  
Parking  
Office Bldg.

**LEGEND**

CONSTRUCTION SYSTEM MARKER, REFER TO A40.1, A40.2 & A40.3 FOR DETAILS

**GENERAL NOTES**

- ALL STEEL - COLUMNS, BEAMS, CROSS BRACING TO BE SPRAYED WITH FIRE RESISTANT MATERIAL TO ACHIEVE A 1 HOUR RATING, REFER TO D4 & D5 A40.3 DRAWING FOR U.L. DESIGNS.
- 5TH FLOOR STRUCTURE - CONCRETE, REINFORCING, AND FORM DECKING TO ACHIEVE A 2 HOUR RATING, REFER TO D3/A40.3 FOR U.L. DESIGN.
- 6TH-10TH FLOOR STRUCTURES - CONCRETE, REINFORCING, AND FORM DECKING TO ACHIEVE A 1 HOUR RATING, REFER TO D3/A40.3 FOR U.L. DESIGN.
- MAIN BUILDING ROOF STRUCTURES - METAL DECKING, STEEL FRAMING, AND ROOF JOISTS TO ACHIEVE A 1 HOUR RATING, REFER TO D1/A40.3 FOR U.L. DESIGN.
- RETAIL TENANT ROOF STRUCTURE - CONCRETE PLANK AND TOPPING TO ACHIEVE A 3 HOUR RATING, REFER TO D2/A40.3 FOR U.L. DESIGN.
- STAR NO. 3 ROOF STRUCTURE - CONCRETE PLANK TO ACHIEVE A 2 HOUR RATING, REFER TO C2/A40.3 FOR U.L. DESIGN.

Mark	Date	Description
-	07.30.07	ISSUED FOR CONSTRUCTION
-	06.25.07	60% CONSTRUCTION DOCUMENTS
-	05.24.07	25% CONSTRUCTION DOCUMENTS
-	03.16.07	100% DESIGN DEVELOPMENT
-	03.16.07	100% DESIGN DEVELOPMENT
-	03.09.07	ELEVATOR PACKAGE
-	02.23.07	10% DESIGN DEVELOPMENT
-	02.07.07	SCHEMATIC DESIGN
-	02.06.07	AMENDED SITE PLAN REVIEW
-	01.26.07	M.E.P.F. R.F.P.
-	12.22.06	RESPONSE TO PLANNING COMMENTS

Drawing Status

Issue Dates

Drawing Title  
**EXTERIOR DETAILS**

PA / PE: JLJ Drawn By: MMO

Drawing Number  
**A50.1**