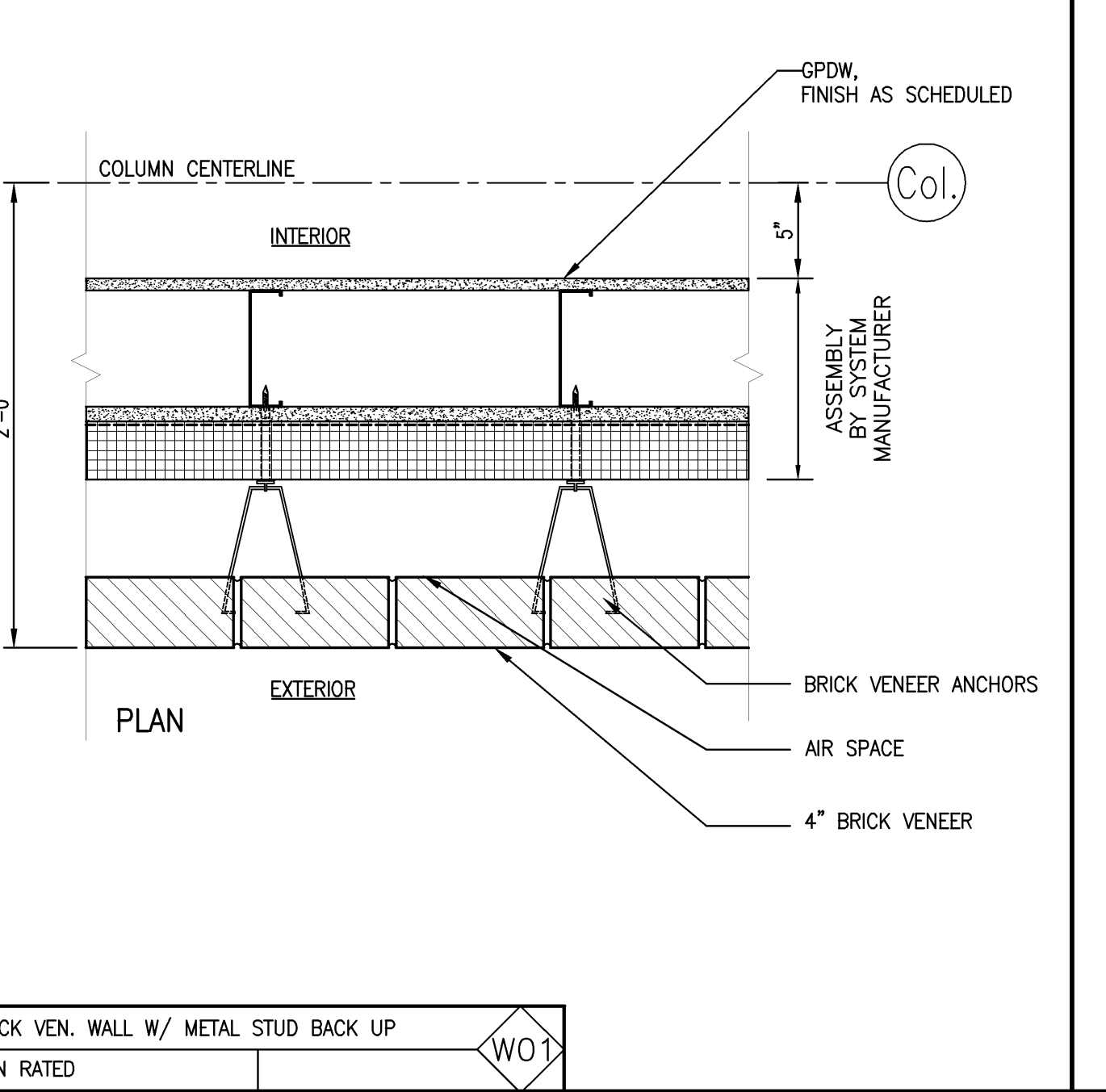
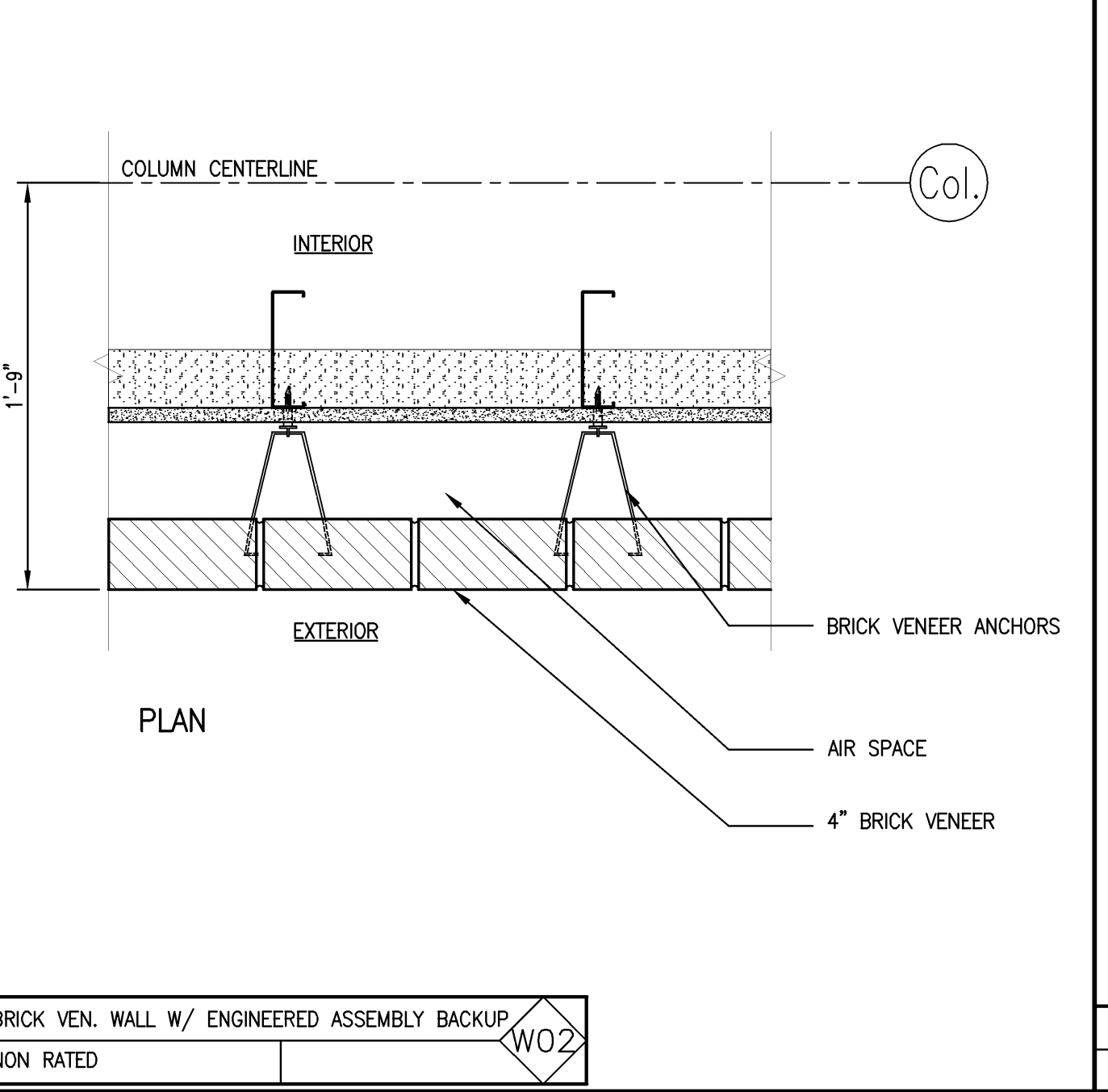
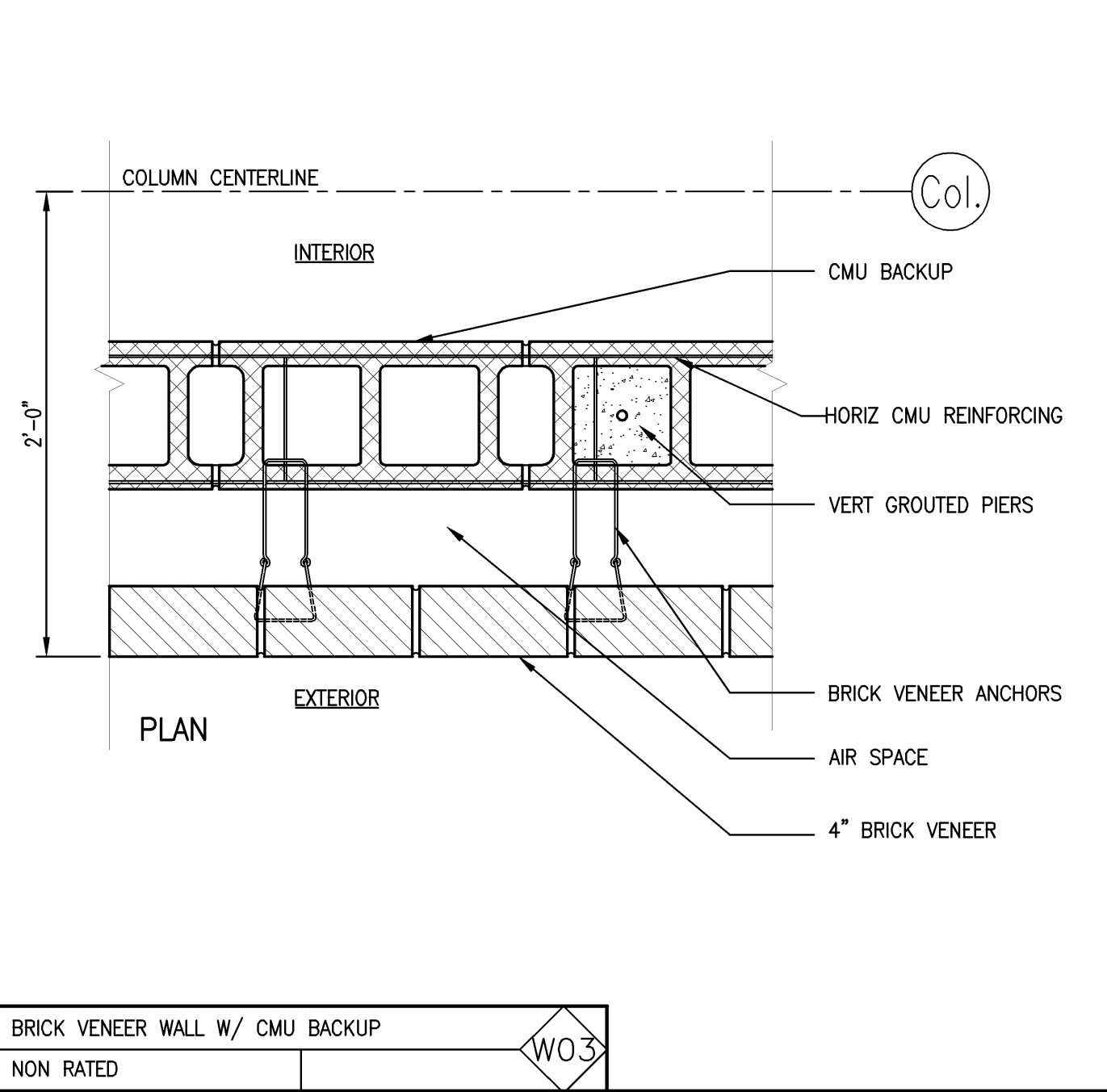
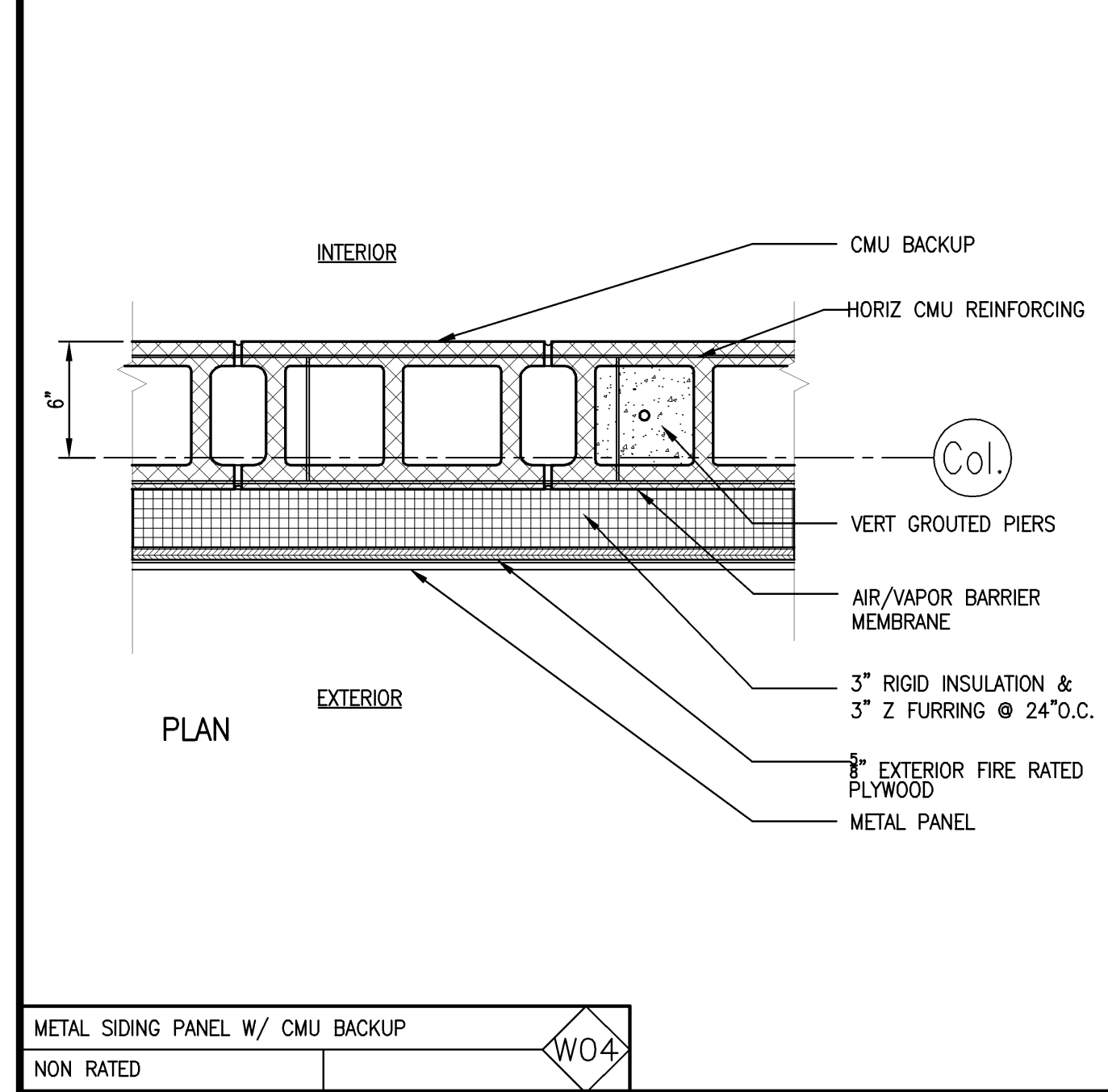
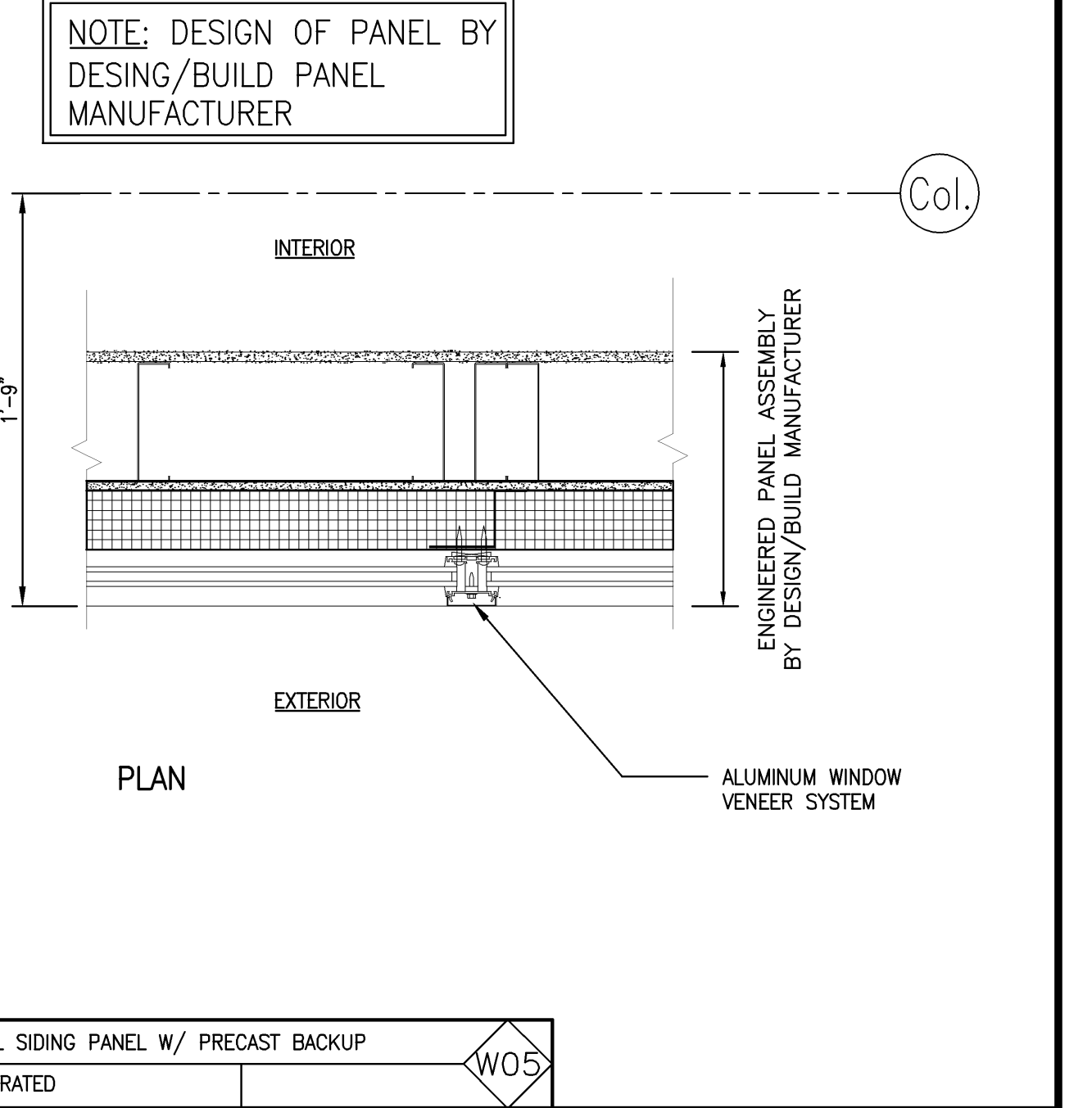
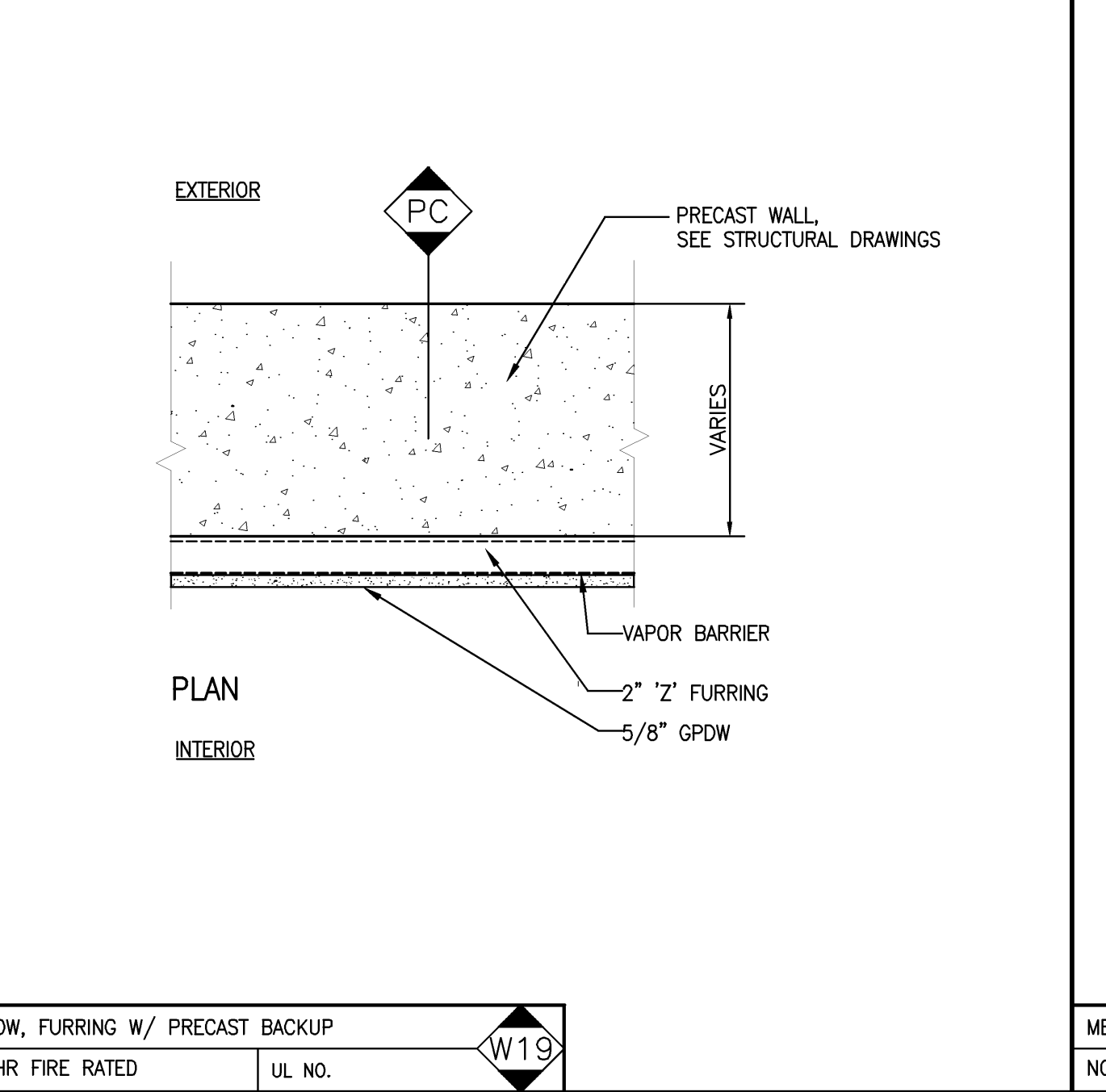
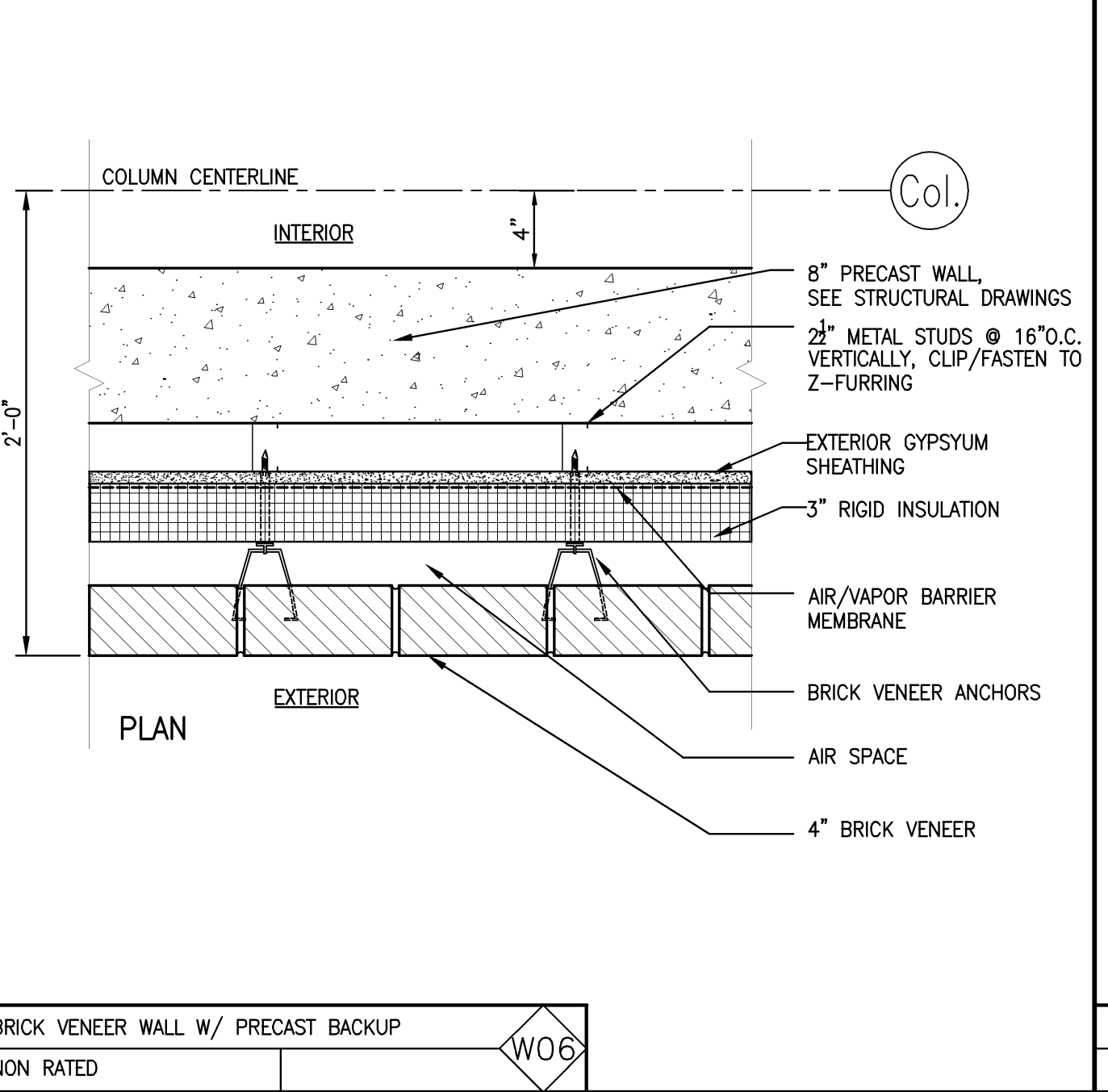
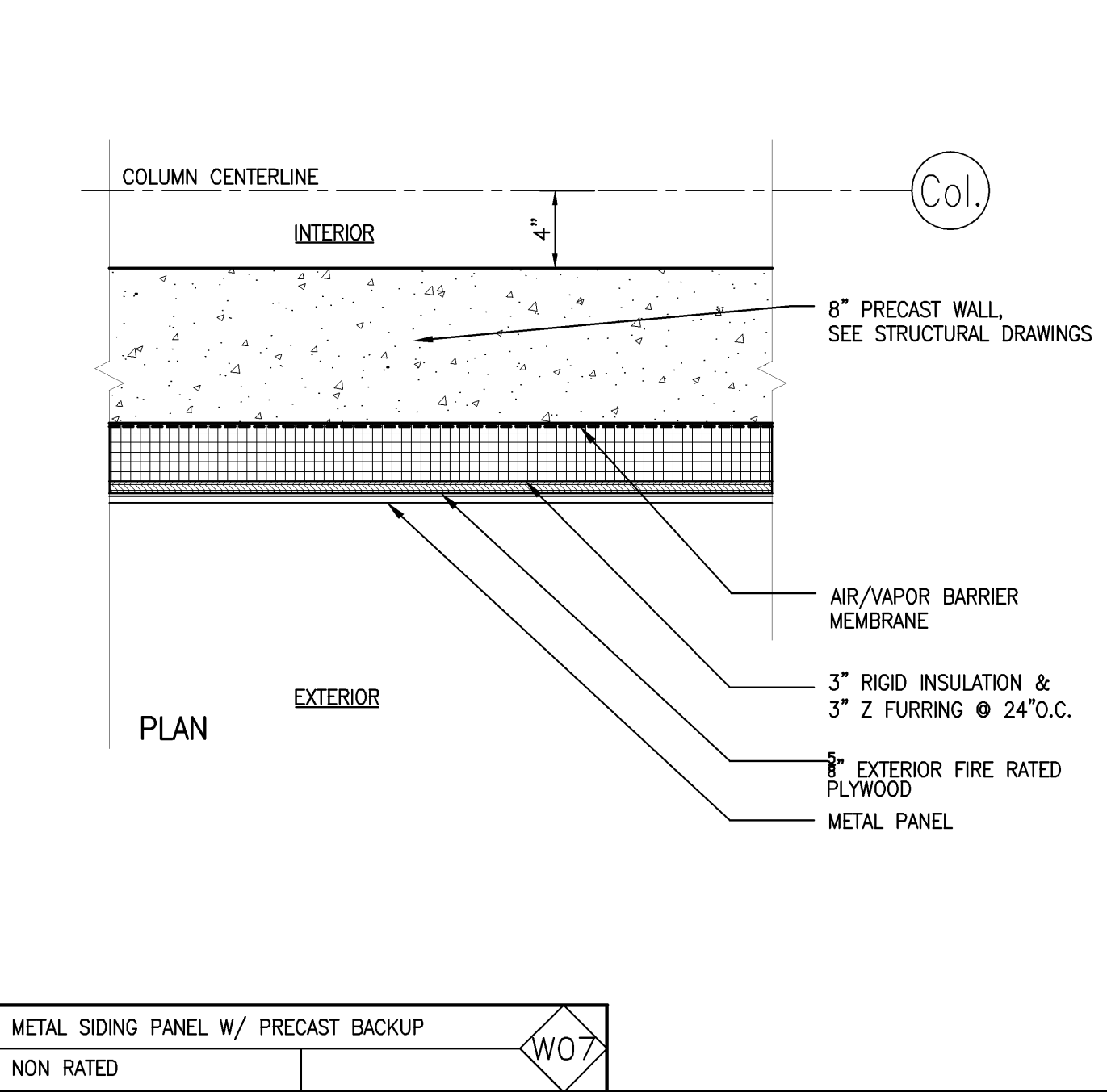
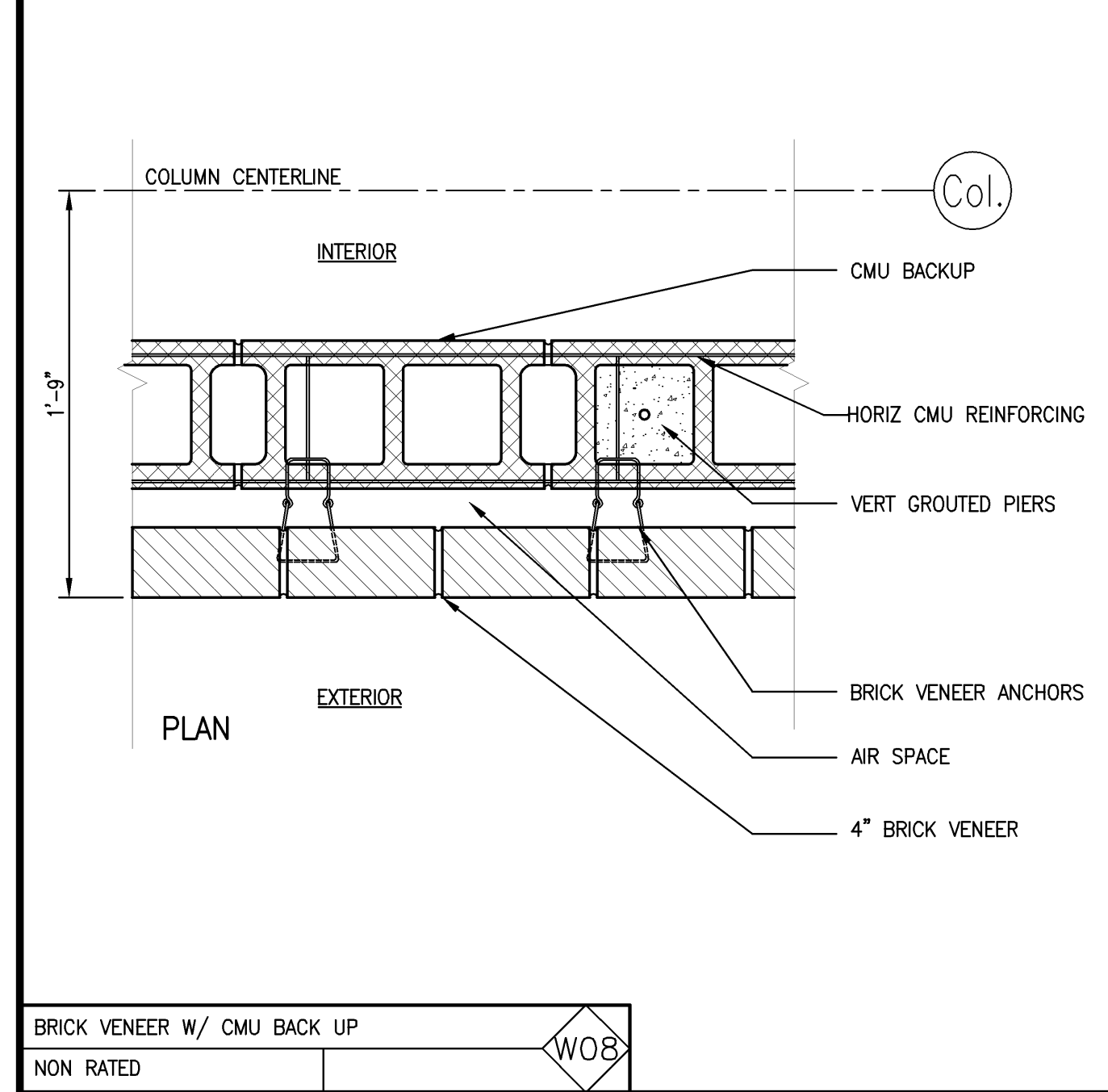
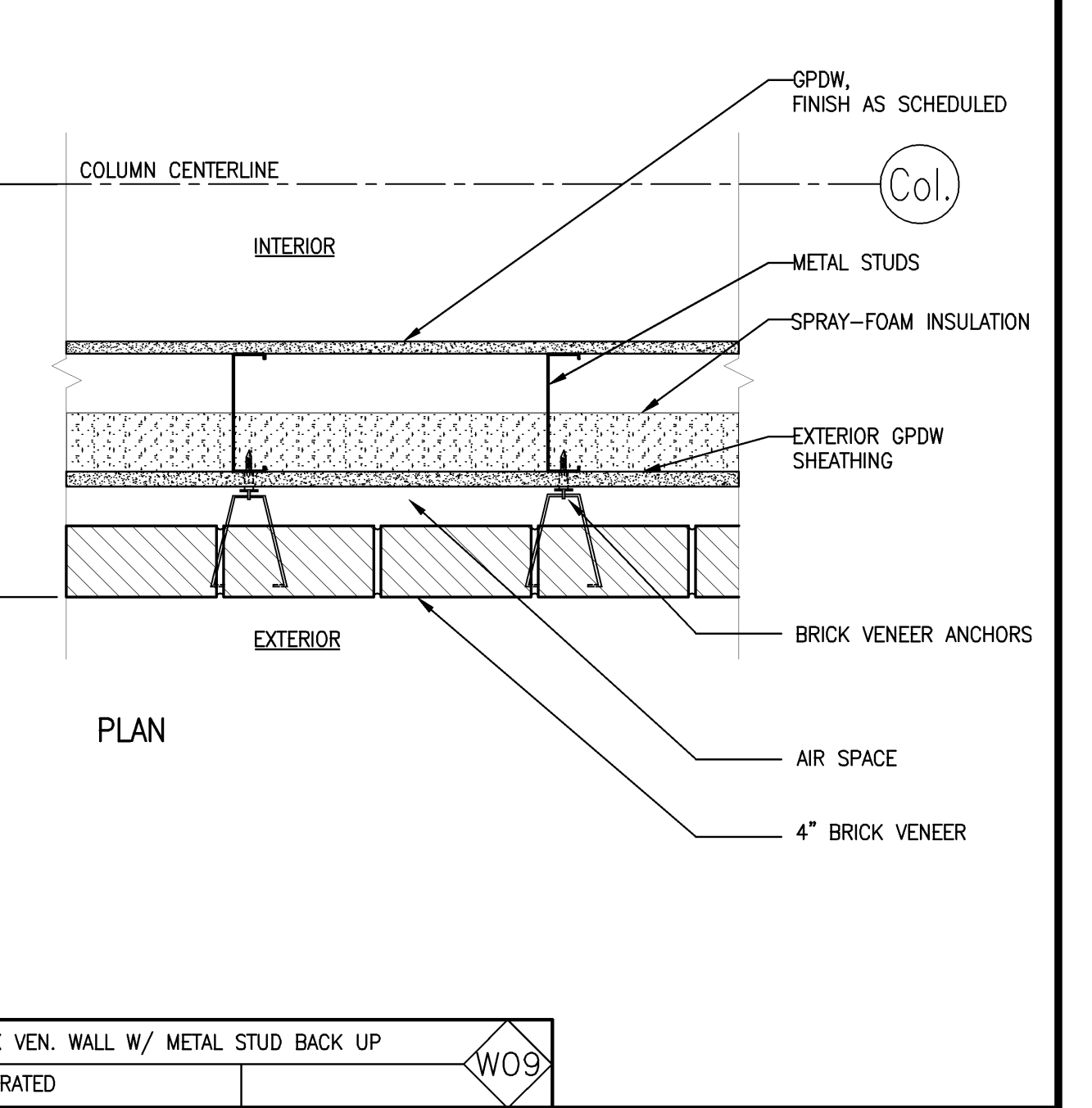
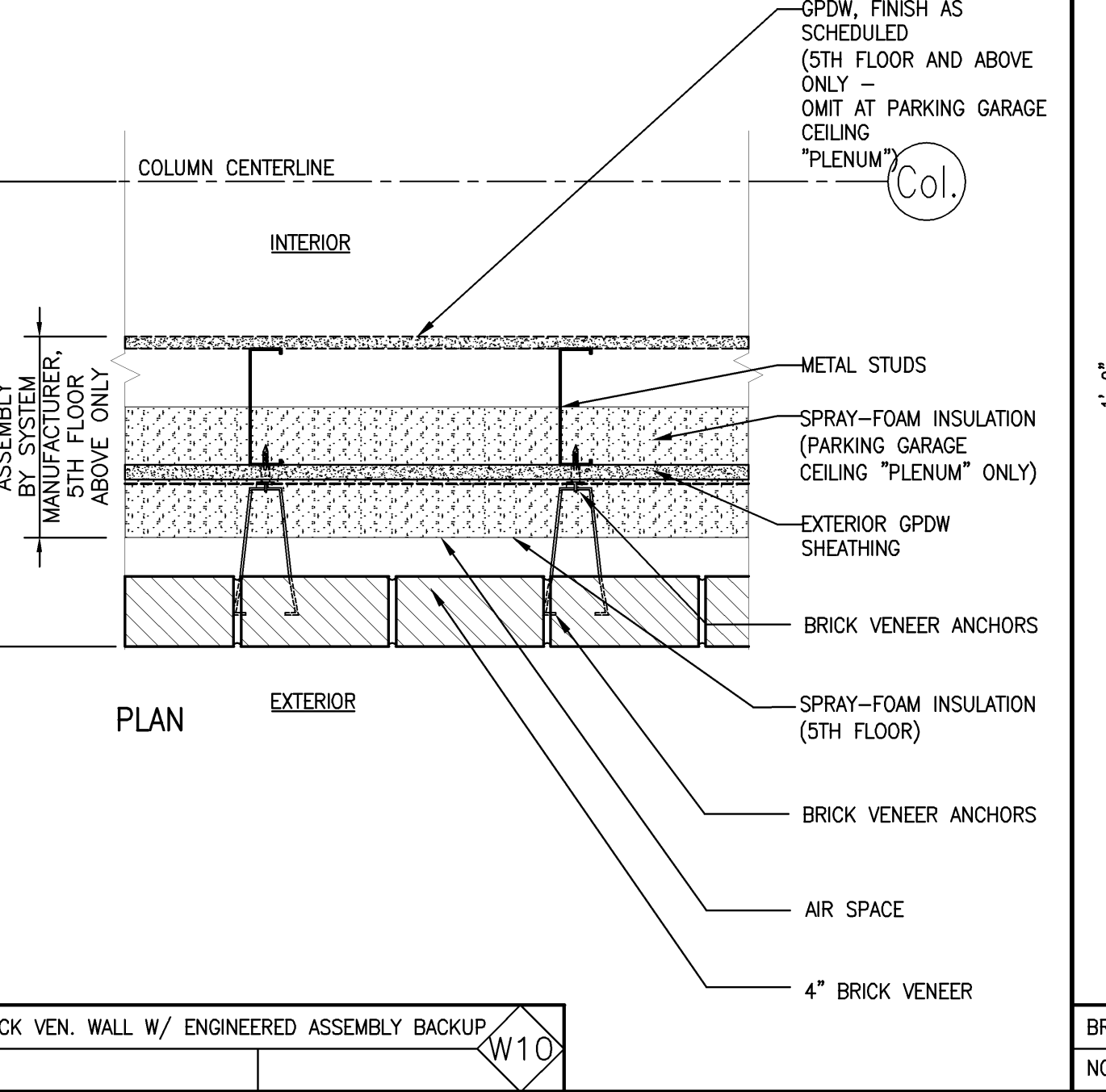
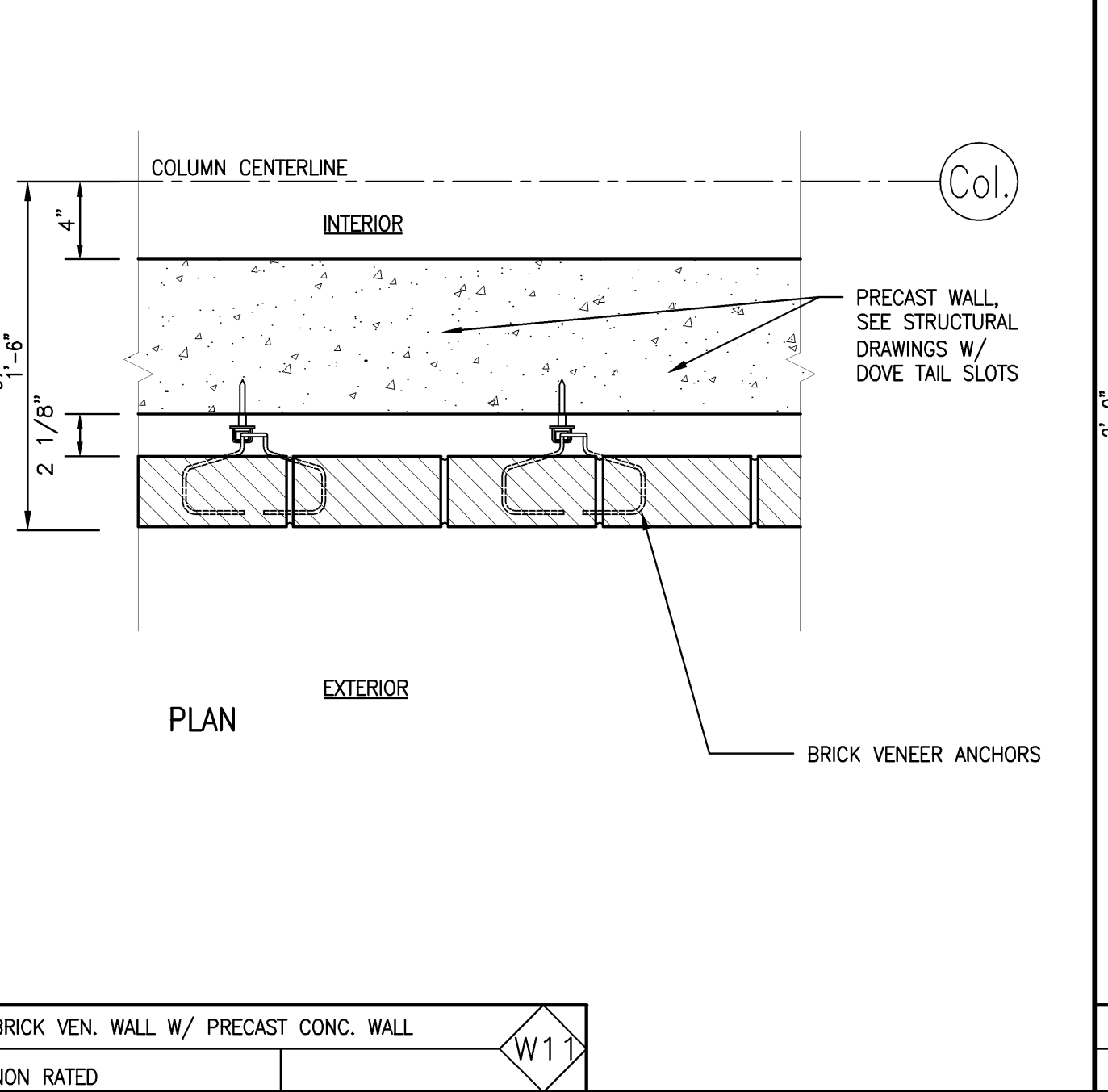
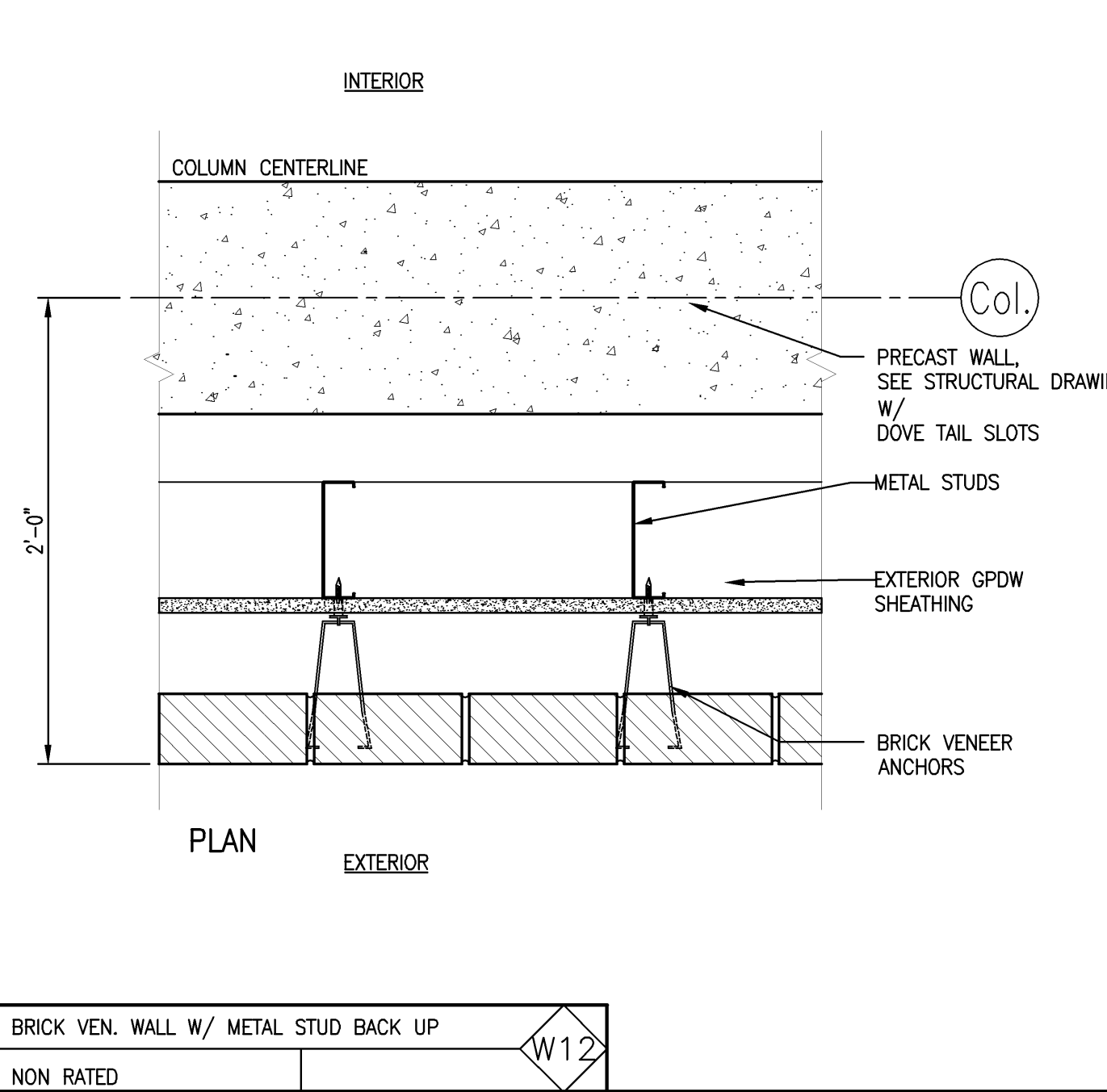
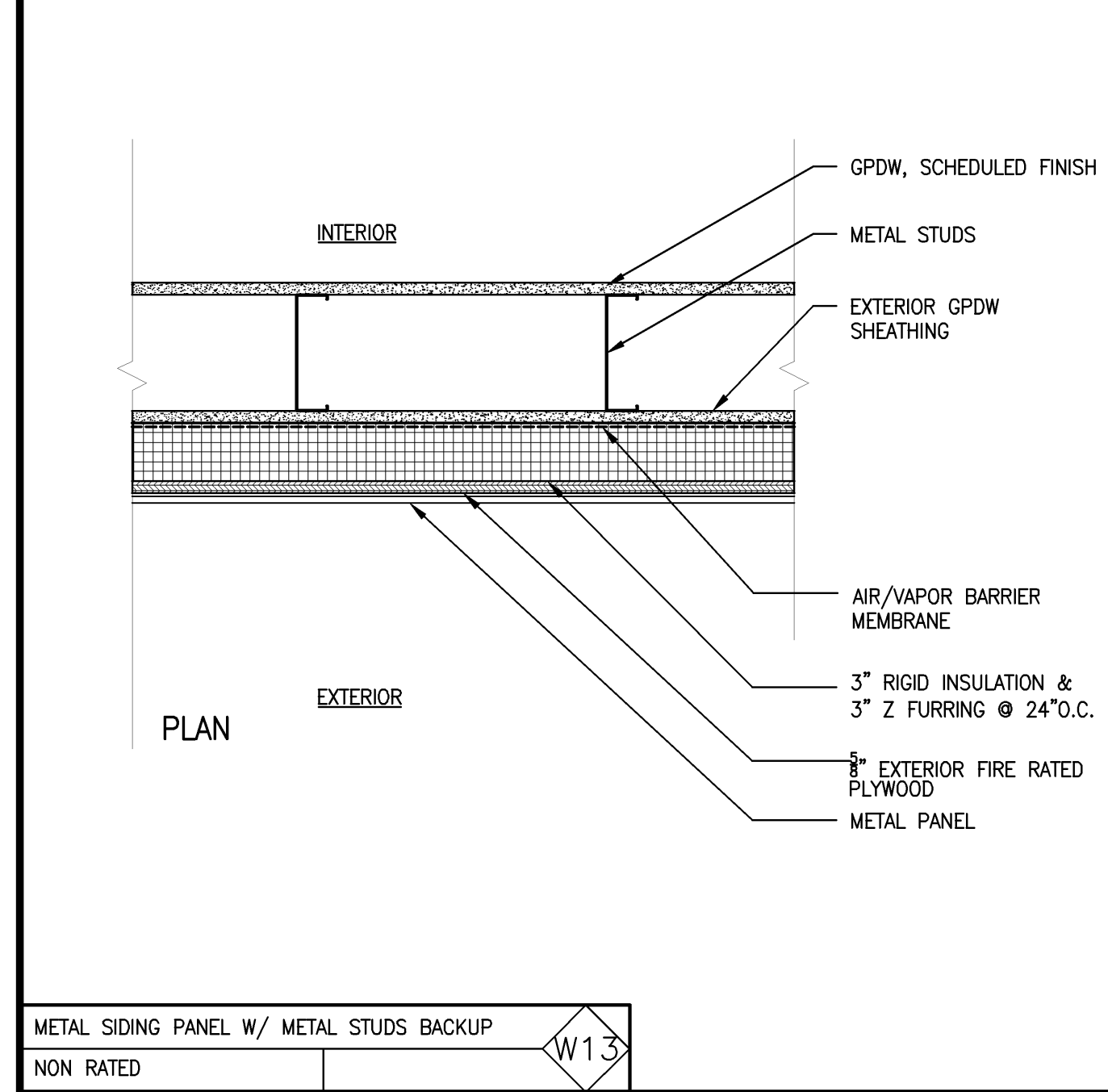
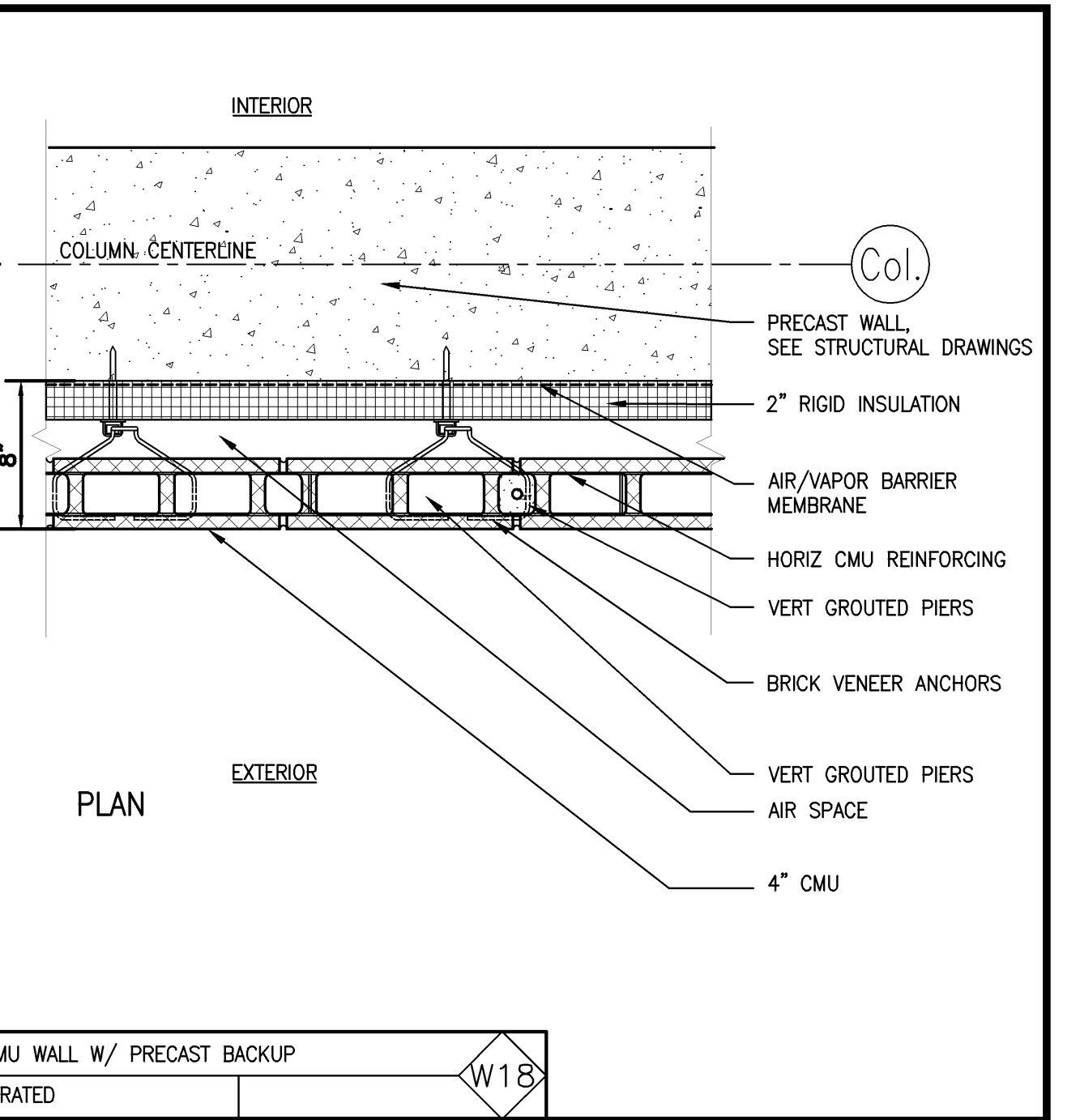
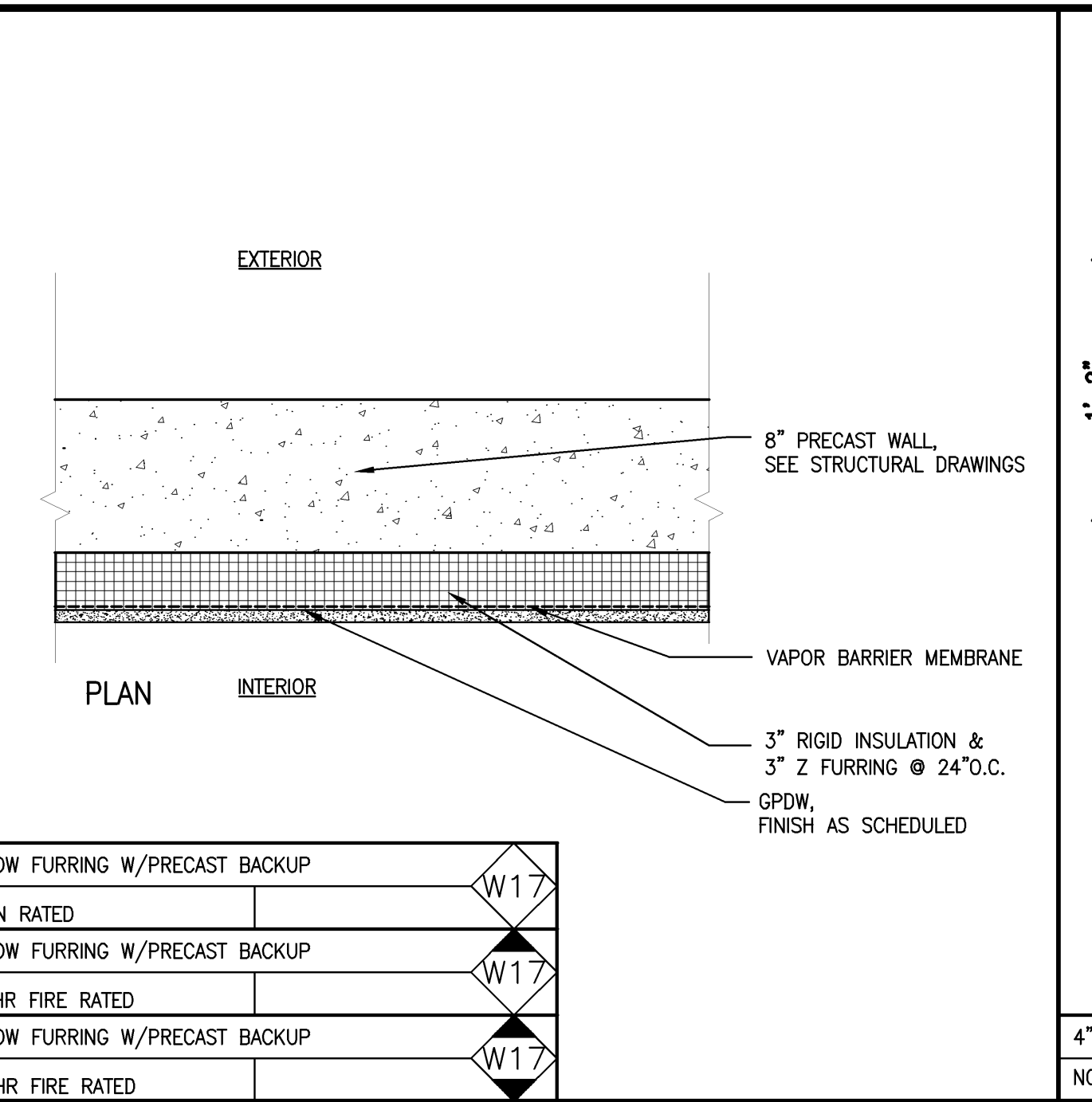
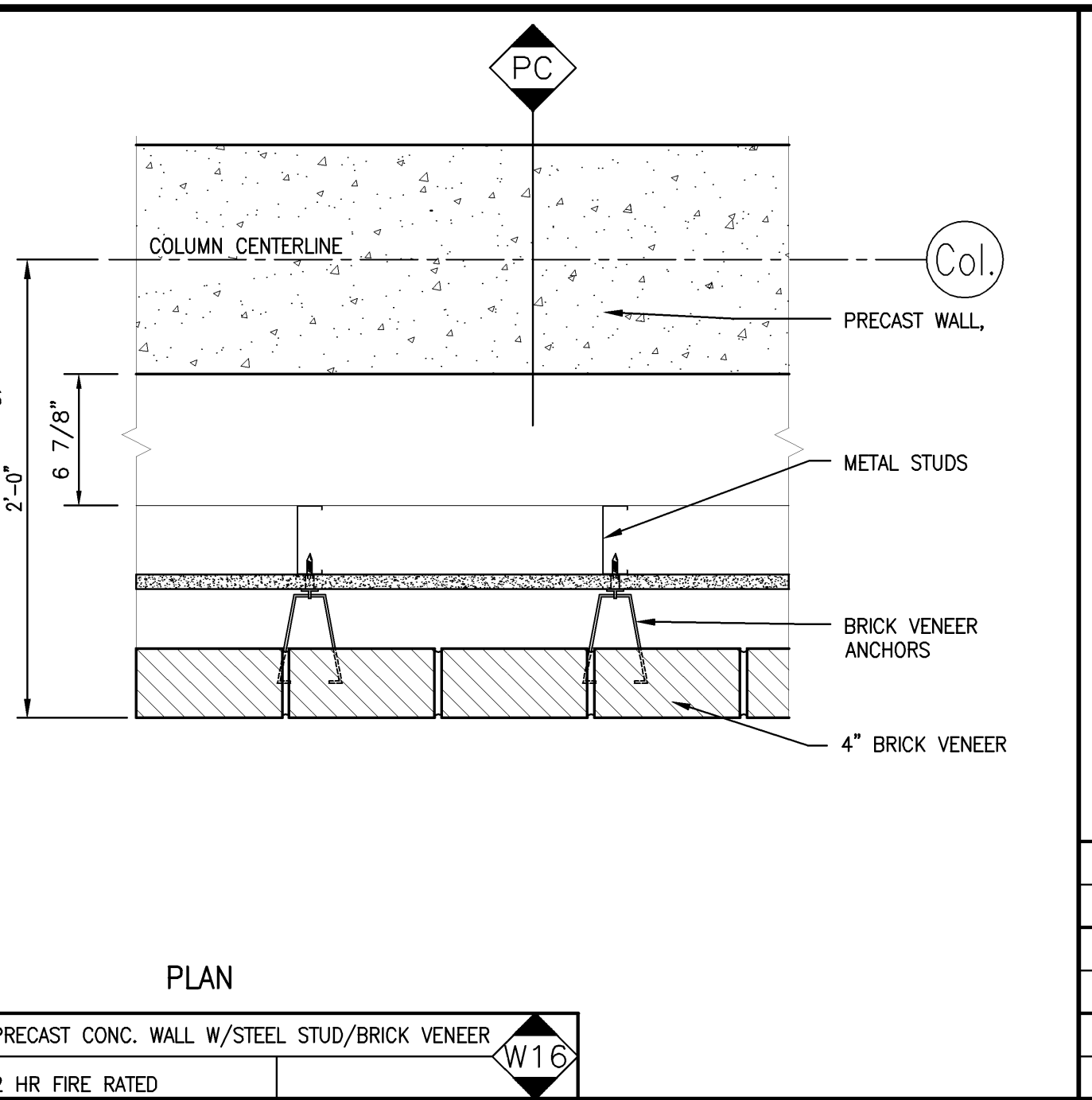
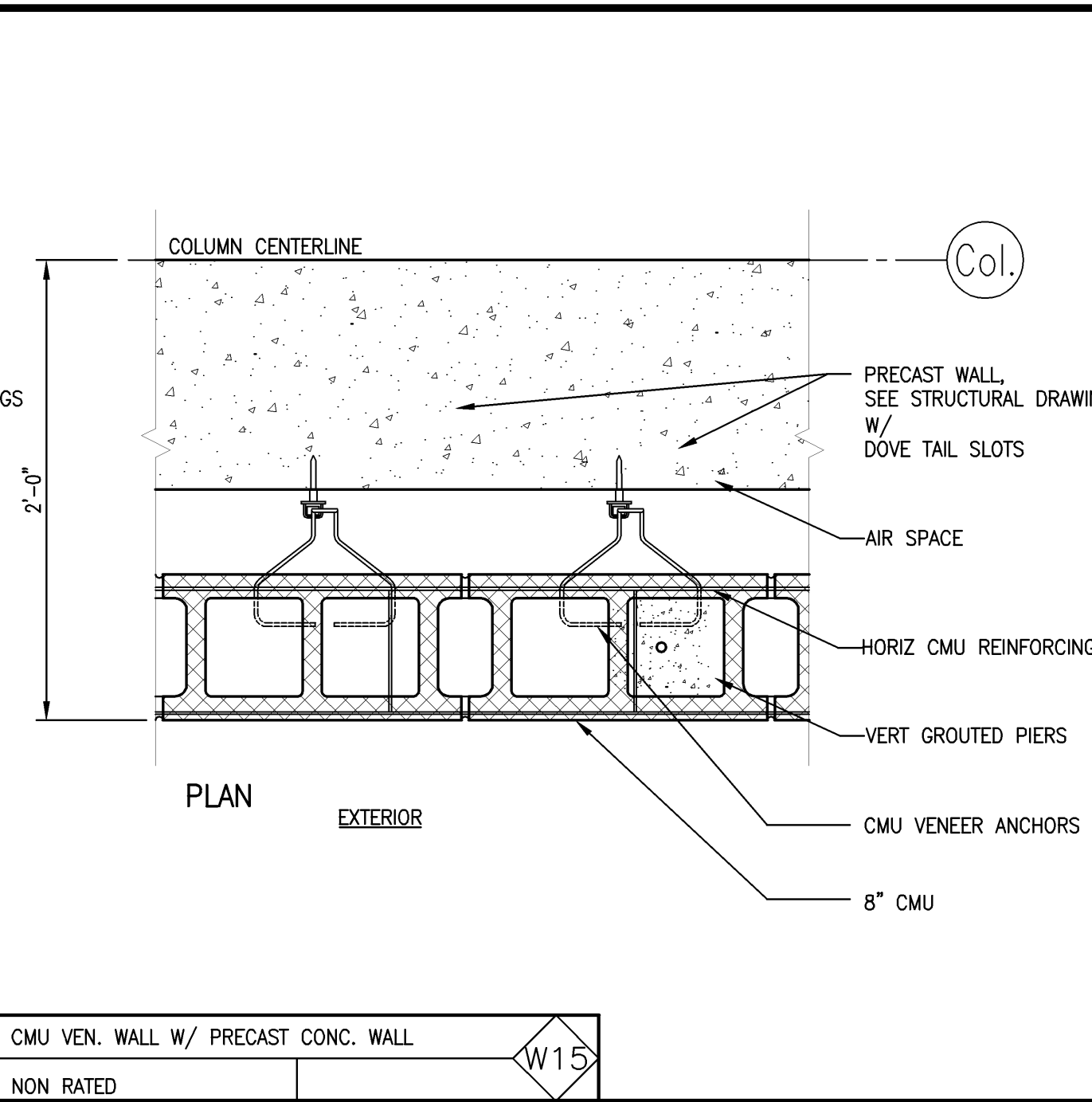
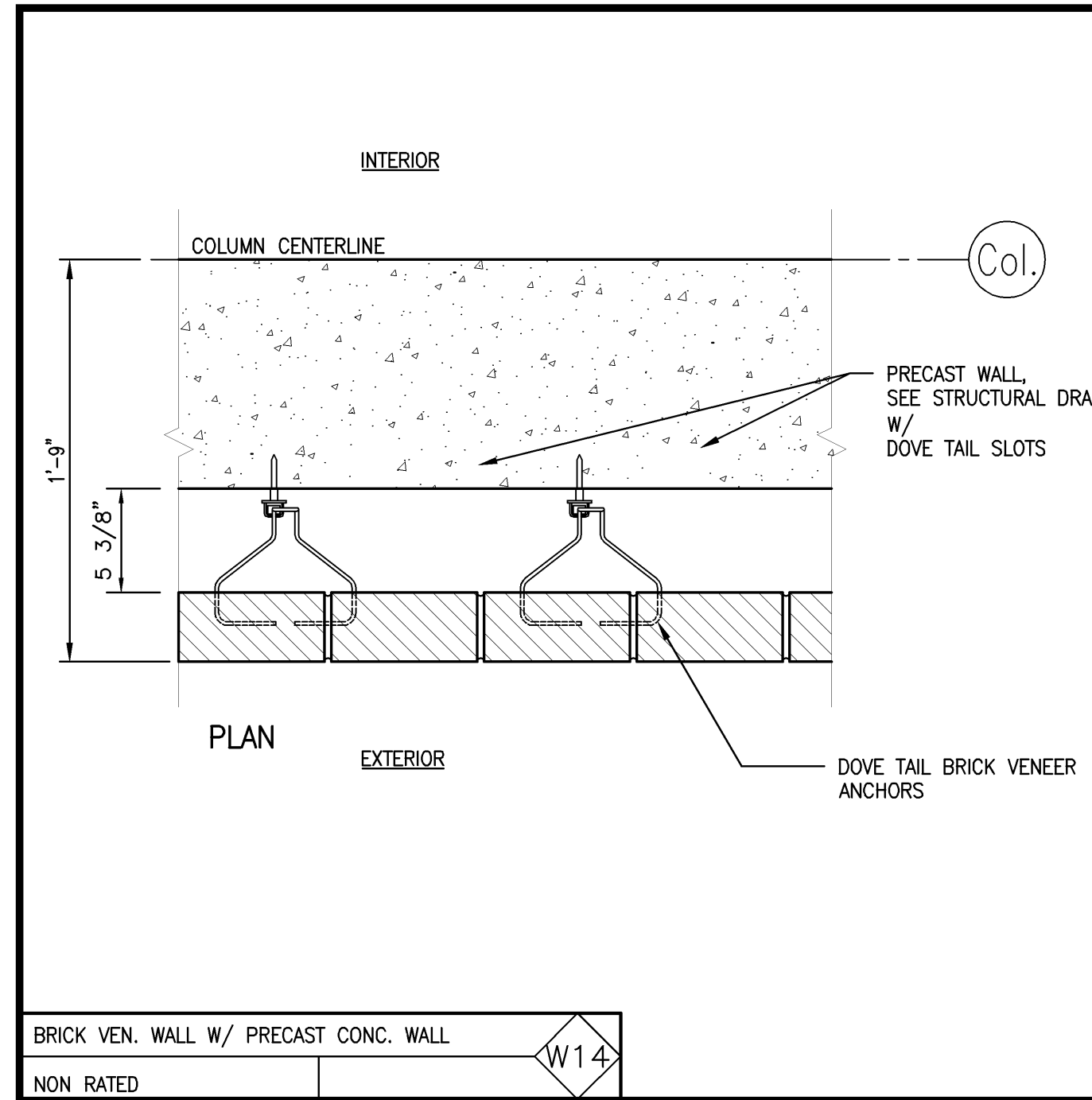


Mark	Date	Description
-	07.30.07	ISSUED FOR CONSTRUCTION
-	06.25.07	60% CONSTRUCTION DOCUMENTS
-	05.24.07	25% CONSTRUCTION DOCUMENTS
-	03.16.07	100% DESIGN DEVELOPMENT
-	03.16.07	100% DESIGN DEVELOPMENT
-	03.09.07	ELEVATOR PACKAGE
-	02.23.07	10% DESIGN DEVELOPMENT
-	02.07.07	SCHEMATIC DESIGN
-	02.06.07	AMENDED SITE PLAN REVIEW
-	01.26.07	M.E.P.F. R.F.P.
-	12.22.06	RESPONSE TO PLANNING COMMENTS

Drawing Status



GENERAL NOTES:

- SEE WALL SECTION AND DETAIL SHEETS FOR CONNECTIONS/DETAILS OTHER THAN SHOWN.
- ALL FIRE RATED PARTITIONS SHALL BE STENCILED ON WALL SURFACE ABOVE THE CEILING LINE OF EACH ROOM INDICATING RATINGS IN RED OR ORANGE PAINT ON EACH SIDE OF PARTITION.
- EXTEND PARTITIONS TO UNDERSIDE OF FLOOR/ROOF DECK U.N.O., SEAL TO DECK FOR SMOKE AND SOUND CONTROL, FILL VOIDS BETWEEN FLUTES W/ INSULATION AT PARTITIONS WHICH TERMINATE TO UNDERSIDE OF METAL DECK.
- WHERE OCCURS, FRAME GWB AROUND BOTH SIDES OF BEAMS/JOISTS WHERE PARTITION INTERSECTS STRUCTURAL MEMBERS TO MAINTAIN CONTINUITY OF PARTITION TO UNDERSIDE OF DECK.
- CONTRACTOR IS RESPONSIBLE TO VERIFY FIELD CONDITIONS WHICH MAY VARY FROM TYPICAL DETAIL SHOWN ON DRAWINGS; CONTRACTOR TO MODIFY CLOSURE DETAILS TO MEET ACTUAL CONDITIONS AND TO MAINTAIN CONTINUITY OF PARTITION FROM FLOOR TO DECK ABOVE.

STUD OR CMU SIZE
(2) 3-5/8" STEEL STUDS W/ SAB
1 HR FIRE RATED

FIRE RATING
UL DESIGN NO. WHERE APPLICABLE

NON RATED
1HR FIRE RATED
2HR FIRE RATED
INDICATES FIRE RATING WHERE APPLICABLE

W10
PARTITION OR WALL TAG NO.

PARTITION TYPES/LEGEND

1 1/2" = 1'-0"

REF: -

A1