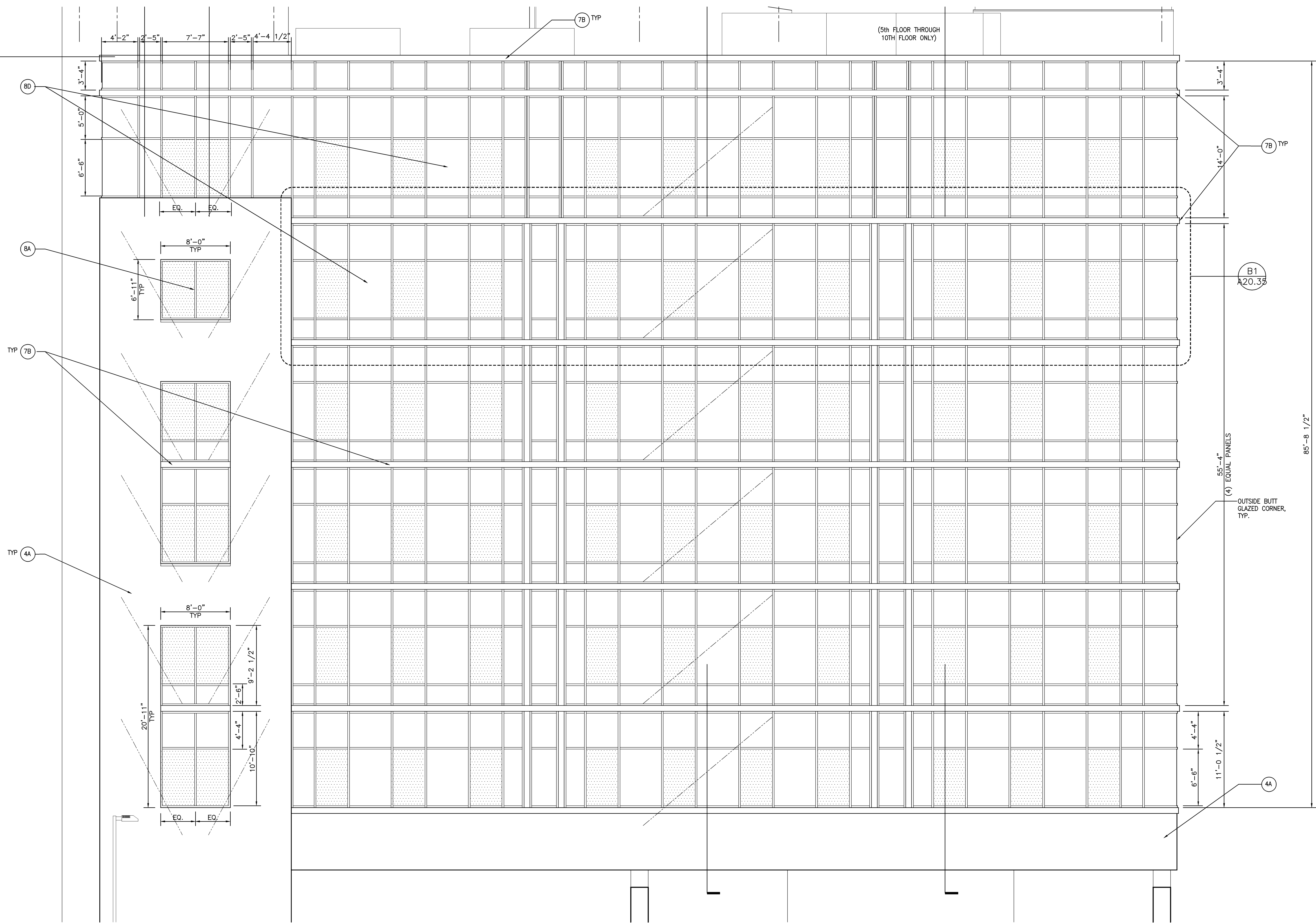


TYP. PANELS LAYOUT
 3/16" = 1'-0" REF: B1



NORTHEAST ELEVATION-WINDOWS LAYOUT
 3/16" = 1'-0" REF: A1

pizzagalli
 construction company

Architects + Engineers
HARRIMAN ASSOCIATES

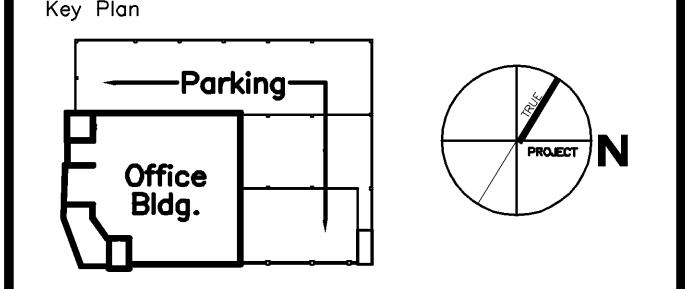
One Auburn Business Park
 Auburn, Maine 04210
 207.784.5100 tel
 207.783.3017 fax

66 Pearl St., Suite 301
 Portland, Maine 04101
 207.775.0053 tel
 207.775.0460 fax
 www.harriman.com
 © 2006

STATE OF MAINE
 JUDY JOSEPH
 No. 2006

Project Title
84 MARGINAL WAY
 Portland, Maine

HA Project No. **06196**



EXTERIOR ELEVATION MATERIAL LEGEND

(A)	PRECAST CONCRETE
(C)	CONCRETE WALL
(S)	PRECAST CONCRETE SPANDREL/COLUMN
(A)	BRICK VENEER
(M)	MASONRY EXPANSION JOINT
(C)	8" CMU BLOCK
(A)	ARCH. STL. RAILINGS, COLOR PAINTED
(D)	DECORATIVE METAL SCREEN/GUARDRAIL
(C)	METAL PANEL COVERED CANOPY
(G)	METAL SECURITY GRILLE
(A)	METAL PANEL
(C)	METAL CLADDING
(A)	ALUMINUM WINDOWS
(D)	ALUMINUM DOORS
(C)	CURTAINWALL SYSTEM W/INSULATED GLASS & GLASS SPANDREL PANEL
(D)	CURTAINWALL VENEER (ON BUILDING ENVELOPE PANELIZED SYSTEM)
(C)	HOLLOW METAL DOOR
(G)	SPANDREL GLASS
(L)	MECHANICAL LOUVERS

GLAZING LEGEND:

TRANSPARENT GLAZING: CLEAR [Pattern]

SPANDREL PANELS: XXXXX [Pattern]

-	07.30.07	ISSUED FOR CONSTRUCTION
-	06.25.07	60% CONSTRUCTION DOCUMENTS
-	05.24.07	25% CONSTRUCTION DOCUMENTS
-	03.16.07	100% DESIGN DEVELOPMENT
-	03.16.07	100% DESIGN DEVELOPMENT
-	03.09.07	ELEVATOR PACKAGE
-	02.23.07	10% DESIGN DEVELOPMENT
-	02.07.07	SCHEMATIC DESIGN
-	02.06.07	AMENDED SITE PLAN REVIEW
-	01.26.07	M.E.P.F. R.F.P.
-	12.22.06	RESPONSE TO PLANNING COMMENTS

Mark Date Description

Issue Dates

Drawing Status

Drawing Title
EXTERIOR ELEVATION

PA / PE: JJJ Drawn By: LG

Drawing Number
A20.35