

**LEGEND**

ROOM NAME	ROOM NAME & NUMBER
###	PARTITION/CONSTRUCTION TYPE
(#)	DOOR NUMBER
(I)	WINDOW TYPE
---	CROSS BRACING
○ FE	FIRE EXTINGUISHER
FE	FIRE EXTINGUISHER & CABINET

- GENERAL NOTES**
- INTERIOR PARTITION DIMENSIONS ARE TO FACE OF FINISH OF PARTITION FROM COLUMN CENTER LINE UNLESS OTHERWISE NOTED.
  - REFER TO A40.1, A40.2 & A40.3 FOR PARTITION/CONSTRUCTION SYSTEMS DESCRIPTIONS.
  - ALL STEEL - COLUMNS, BEAMS, CROSS BRACING TO BE SPRAYED WITH FIRE RESISTANT MATERIAL TO ACHIEVE A 1 HOUR RATING, REFER TO D4 & D5 A40.3 DRAWING FOR U.L. DESIGNS.

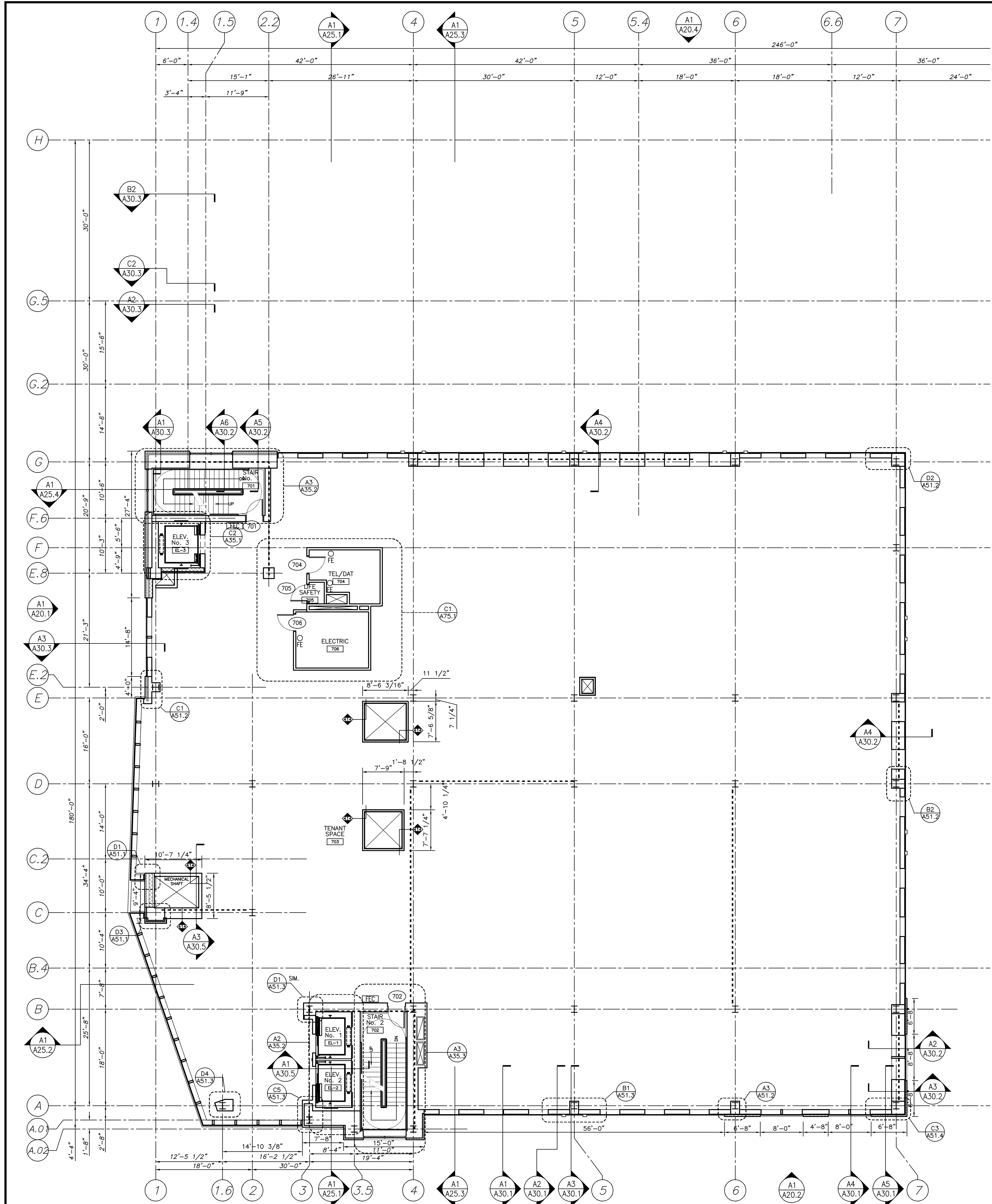
Mark	Date	Description
-	07.30.07	ISSUED FOR CONSTRUCTION
-	06.25.07	60% CONSTRUCTION DOCUMENTS
-	05.24.07	25% CONSTRUCTION DOCUMENTS
-	03.16.07	100% DESIGN DEVELOPMENT
-	03.16.07	100% DESIGN DEVELOPMENT
-	03.09.07	ELEVATOR PACKAGE
-	02.23.07	10% DESIGN DEVELOPMENT
-	02.07.07	SCHEMATIC DESIGN
-	02.06.07	AMENDED SITE PLAN REVIEW
-	01.26.07	M.E.P.F. R.F.P.
-	12.22.06	RESPONSE TO PLANNING COMMENTS

Drawing Status

Drawing Title  
**SEVENTH FLOOR PLAN**

PA / PE: J/LJ Drawn By: L/G

Drawing Number  
**A10.7**



**7TH FLOOR PLAN**  
1/8" = 1'-0"  
0 4' 8' 12'  
REF:

**A1**