

LEGEND

EXISTING	PROPOSED	EXISTING	PROPOSED
PROPERTY LINE	TELEPHONE PAD	ELECTRIC TRANSFORMER	
MONUMENT FOUND	CABLE PAD	LIGHT FIXTURE - STREET	
CATCHBASIN	LIGHT FIXTURE - SITE	LIGHT FIXTURE - BALUNING	
MANHOLE	LIGHT FIXTURE - BALUNING	CURB	
HYDRANT			
WATER VALVE			
UTILITY POLE			

PLANT LIST - GROUND LEVEL

KEY	QTY	BOTANICAL NAME	COMMON NAME	SIZE
TREES				
A. RA	2	ACER RUBRUM 'ARMSTRONG'	ARMSTRONG RED MAPLE	2 1/2"-3" CAL
A. KAR	4	ACER RUBRUM 'KARSTKA'	KARSTKA RED MAPLE	2 1/2"-3" CAL
B. NIK	1	BETULA NIGRA	NORWAY SPRUCE	10-12" CLUMP
B. NIK	1	BETULA NIGRA	NORWAY SPRUCE	10-12" CLUMP
F. CLE	3	PINUS 'CLELAND'	CLELAND ORNAMENTAL PEAR	2 1/2"-3" CAL
Q. PAL	2	QUERCUS PALUSTRIS	GREEN PILLAR	2 1/2"-3" CAL
Q. POP	3	QUERCUS PALUSTRIS	GREEN PILLAR	2 1/2"-3" CAL
Q. RUB	2	QUERCUS RUBRA	RED OAK	2 1/2"-3" CAL
SHRUBS				
A. LUJ	27	ARCTOSTAPHYLOS UVA-URSI	BEARBERRY	#1
C. PEG	21	CHAMAECYPARIS FISGERA 'BRIGHT GOLD'	BRIGHT GOLD FALSE CYPRESS	2.5-3'
J. HEA	5	FORSYTHIA 'HEADWALKER'	HEADWALKER FORSYTHIA	#3
J. THB	5	JUNIFERUS HORIZONTALIS 'BAR HARBOR'	BAR HARBOR JUNIFER	#3
J. WB	11	JUNIFERUS SABINA 'TAM NEW BLUE'	TAM NEW BLUE JUNIFER	#9
R. PJM	4	JUNIFERUS SCOPULORUM 'WICHTA BLUE'	WICHTA BLUE JUNIFER	#7-24"
V. TOM	15	VIORNIUM PULCUM VAR. 'TOMENTOSUM'	TOMENTOSUM VIORNIUM	18-24"
H. STE	50	HENROCALIS 'STELLA DORO'	STELLA DORO DAYLILY	6" POT

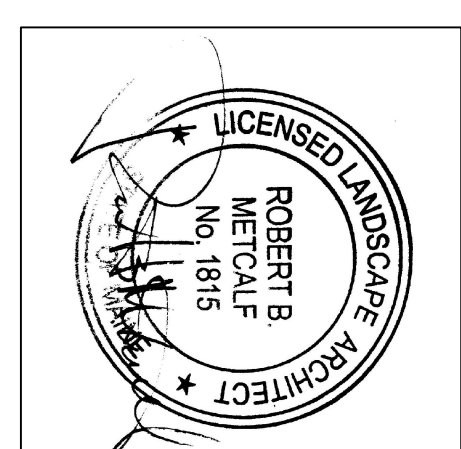
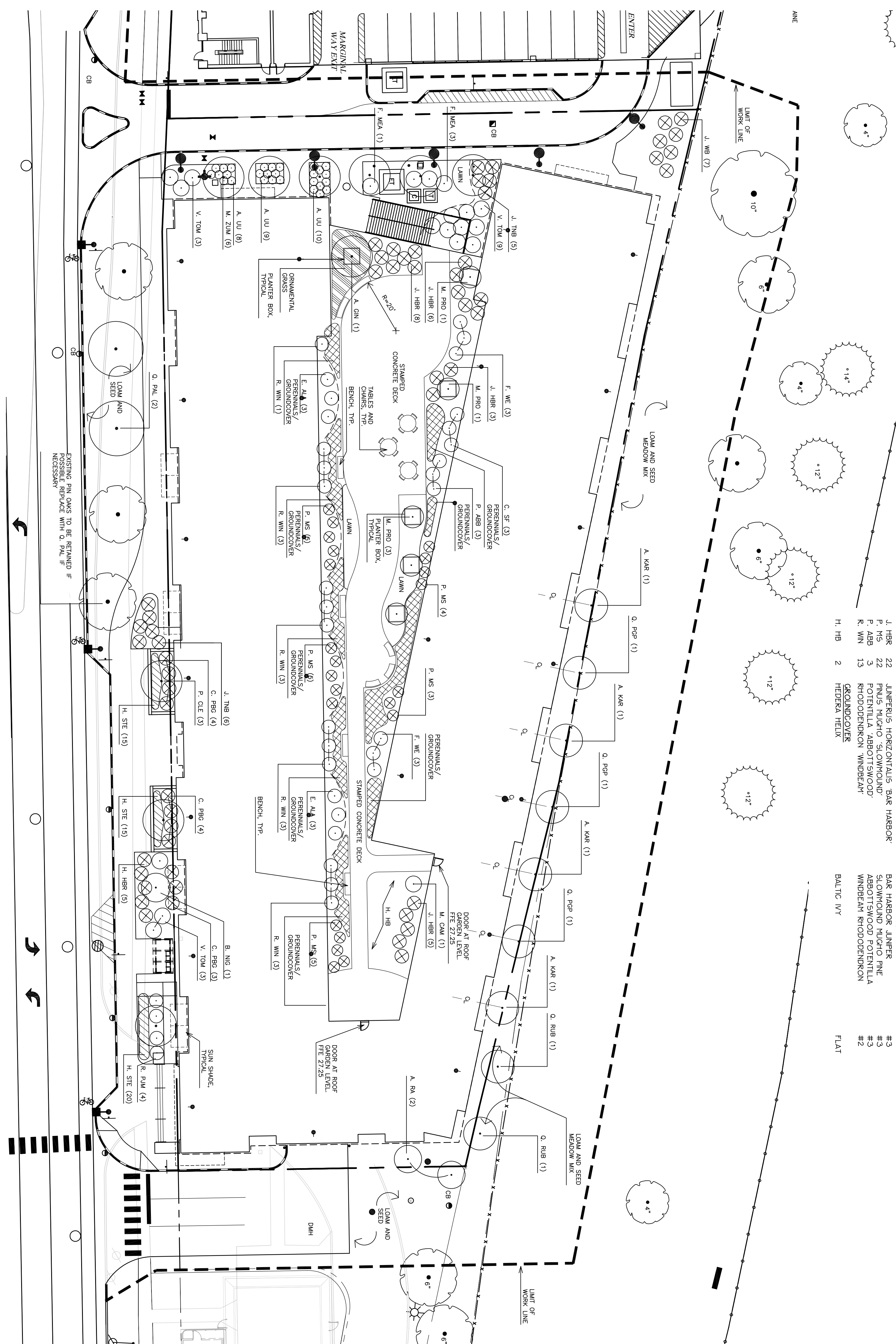
KEY	QTY	BOTANICAL NAME	COMMON NAME	SIZE
PLANT LIST - ROOF DECK				
A. CN	1	MALES 'CANZANI'	AMR MAPLE	6" CLUMP
M. CAN	1	MALES 'CANZANI'	CAMELOT FLOWERING CRAB	1 1/2" CAL
M. PRO	5	MALUS 'PROFUSION'	PROFUSION FLOWERING CRAB	1 1/2" CAL
TREES				
C. SF	3	ERGONUS SERICEA 'FARGON'	FARGON RED TINE DOGWOOD	#3
E. ZIA	6	ERGONUS SERICEA 'ZIA'	DIANE BURNING BUSH	#3
F. WE	22	JUNIFERUS HORIZONTALIS 'BAR HARBOR'	BAR HARBOR JUNIFER	#3
F. WE	22	JUNIFERUS HORIZONTALIS 'BAR HARBOR'	BAR HARBOR JUNIFER	#3
P. MS	22	PINUS MICHX 'SLOWGROWND'	SLOWGROWND MICHXO PINE	#3
P. MS	22	PINUS MICHX 'SLOWGROWND'	SLOWGROWND MICHXO PINE	#3
R. WIN	13	RHODODENDRON 'WINDERM'	WINDERM RHODODENDRON	#2
H. HB	2	HEDERA HELIX	BALTE IVY	FLAT

1 TREE AND SHRUB INSTALLATION



GENERAL PLANTING NOTES

- CALL DG-54/F (1-888-344-7233) PRIOR TO BEGINNING WORK. THE LANDSCAPE CONTRACTOR IS ADVISED OF THE PRESENCE OF UTILITIES AT THE SITE. COMMENCING AND DIGGING OPERATIONS AT THE SAME LOCATION SHALL BE REPORTED TO THE LANDSCAPE ARCHITECT IMMEDIATELY. ANY CHANGES TO THE LANDSCAPE ARCHITECT SHALL BE IMMEDIATELY REPORTED TO THE LANDSCAPE ARCHITECT FOR FURTHER DIRECTION AND RESOLUTION BEFORE ANY ADDITIONAL WORK PROCEEDS.
- CONTRACTOR SHALL THOROUGHLY FAMILIARIZE HIMSELF WITH ALL SITE CONDITIONS PRIOR TO CONSTRUCTION BIDDING.
- DO NOT SCALE FROM DRAWINGS. ANY OMISSIONS IN DIMENSIONING SHALL BE REPORTED IMMEDIATELY TO THE LANDSCAPE ARCHITECT. DIMENSIONS SHALL BE MEASURED TO THE CENTER OF THE TREE OR SHRUB. SPECIFICATIONS SHALL BE IMMEDIATELY REPORTED TO THE LANDSCAPE ARCHITECT FOR FURTHER DIRECTION AND RESOLUTION BEFORE ANY ADDITIONAL WORK PROCEEDS.
- PROVIDE SMOOTH TRANSITION WHERE NEW WORK MEETS EXISTING CONDITIONS.
- CONTRACTOR SHALL FURNISH AND PLACE 12 INCHES OF LOAM IN ALL SHRUB BEDS, 30 INCHES IN ALL TREE PITS, AND CONTRACTOR SHALL COORDINATE SUBGRADE PREPARATION WITH THE GENERAL CONTRACTOR PRIOR TO PLACING LOAM.
- ALL PLANT MATERIAL INSTALLED SHALL MEET THE SPECIFICATIONS OF AMERICAN STANDARDS FOR NURSERY STOCK BY THE AMERICAN ASSOCIATION OF NURSERYMEN.
- ALL PLANT MATERIAL SHALL BE FREE FROM INSECTS AND DISEASE. HORTICULTURAL PRACTICES THIS IS TO INCLUDE PROPER PLANTING AND MAINTENANCE UNTIL ACCEPTANCE FROM THE OWNER.
- ALL GRASS, OTHER VEGETATION AND DEBRIS SHALL BE REMOVED FROM ALL PLANTING AREAS PRIOR TO PLANTING.
- EXISTING TREES TO BE PRESERVED SHALL BE PROTECTED DURING CONSTRUCTION AND SHALL BE THE RESPONSIBILITY OF THE GENERAL CONTRACTOR.
- ALL SHRUB BEDS AND TREE PITS SHALL BE MULCHED WITH 3" CLEAN SHREDDED BLACK MULCH.
- ANY DEVIATION FROM THE LANDSCAPE PLAN, INCLUDING PLANT LOCATION, SELECTION, SIZE, QUANTITY, OR CONDITION, SHALL BE REVIEWED AND APPROVED BY THE LANDSCAPE ARCHITECT PRIOR TO INSTALLATION ON SITE.
- WHERE INDICATED ON PLAN PLANTING SOIL MIXTURE FOR GROUND COVER AND PERENNIAL BED AREAS SHALL CONSIST OF FOUR PARTS TOP-SOIL, TWO PARTS SPHAGNUM PEAT MOSS, AND ONE PART COMPOST. TWO PARTS SPHAGNUM PEAT MOSS AND ONE PART COMPOST SHALL BE WELL-ROTTED OR DEHYDRATED MANURE OR COMPOST. ROTILL BEDS TO A DEPTH OF 8 INCHES.
- DAMAGE TO EXISTING SITE IMPROVEMENT DURING INSTALLATION OF LANDSCAPE MATERIAL SHALL BE THE RESPONSIBILITY OF THE LANDSCAPE CONTRACTOR.



Scale: 1"=50'

0 10 20 40 Ft.

North

Sheet No. 5

Title:
PLANTING PLAN AND ROOF PLAN

Reproduction or reuse of this document without the written consent of Mitchell & Associates is prohibited.

Issued For:
ISSUED FOR FOUNDATION PRECING AND FOUNDATION PRELIM

Revisions:

Date:
JUNE 15, 2007

Prepared By:
MITCHELL & ASSOCIATES

Prepared For:
SOUTHERN MAINE STUDENT CENTER
247 South Street
Rockport, Maine 04856
Tel: (207) 286-4097

GP
Gorrell-Palmer
Consulting Engineers, Inc.
16 S. State Street
Portland, ME 04101
Tel: (207) 774-4427

BAYSIDE VILLAGE
A STUDENT HOUSING COMPLEX

120 Marginal Way Portland, Maine